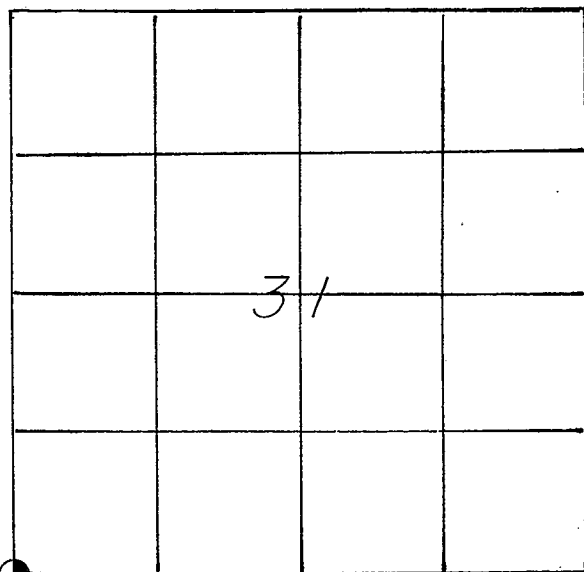


21507360000

## U. S. PUBLIC LAND SURVEY MONUMENT RECORD

SECTION 31 T 15 N, R 6 W, TOWN OF SHELBY

LA CROSSE COUNTY



LOCATION OF LANDMARK

CREW: BILL JUNG  
PERRY DAHL

DATE: 8-18-86

WISCONSIN COORDINATE SYSTEM

North

East

Theta Angle

Horiz. Order

Vert. Order

TYPE OF LANDMARK

BRASS CAPPED LUNDE MARKER

BEARINGS ARE REFERENCED TO

Assumed

Describe any record evidence, monument evidence, testimonial evidence or any other material evidence you considered and whether the monument was found or restored through acceptance of an obliterated evidence location.

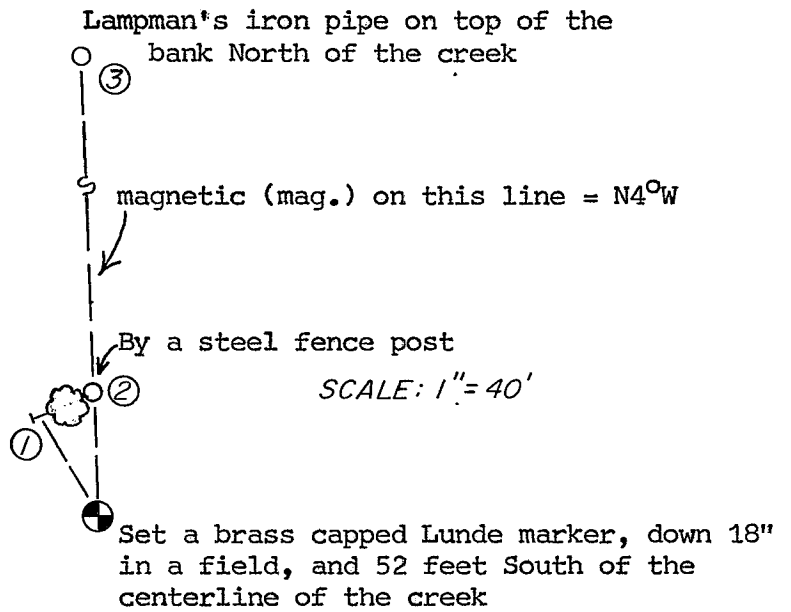
I set the corner at a computed location. I intersected the projection of the South line of the SW1/4 of Section 36-T15N-R7W with the projection of the line through the stones that Lampman found along the West line of the Fractional NW1/4 of Section 6-T14N-R6W. I feel that this best fits the field evidence in the four surrounding townships and the original government notes. Double proportionate measurement for this lost corner would not work. I buried a brass capped Lunde marker at the corner.

Describe or show any material discrepancy between the location of the restored corner and that of the corner previously restored or reestablished.

Rob Lampman set an iron pipe at this corner in 1980. I do not agree with this location. We discussed this problem, and he accepted my new location.

RECORD OF DURABLE WITNESS MONUMENTS

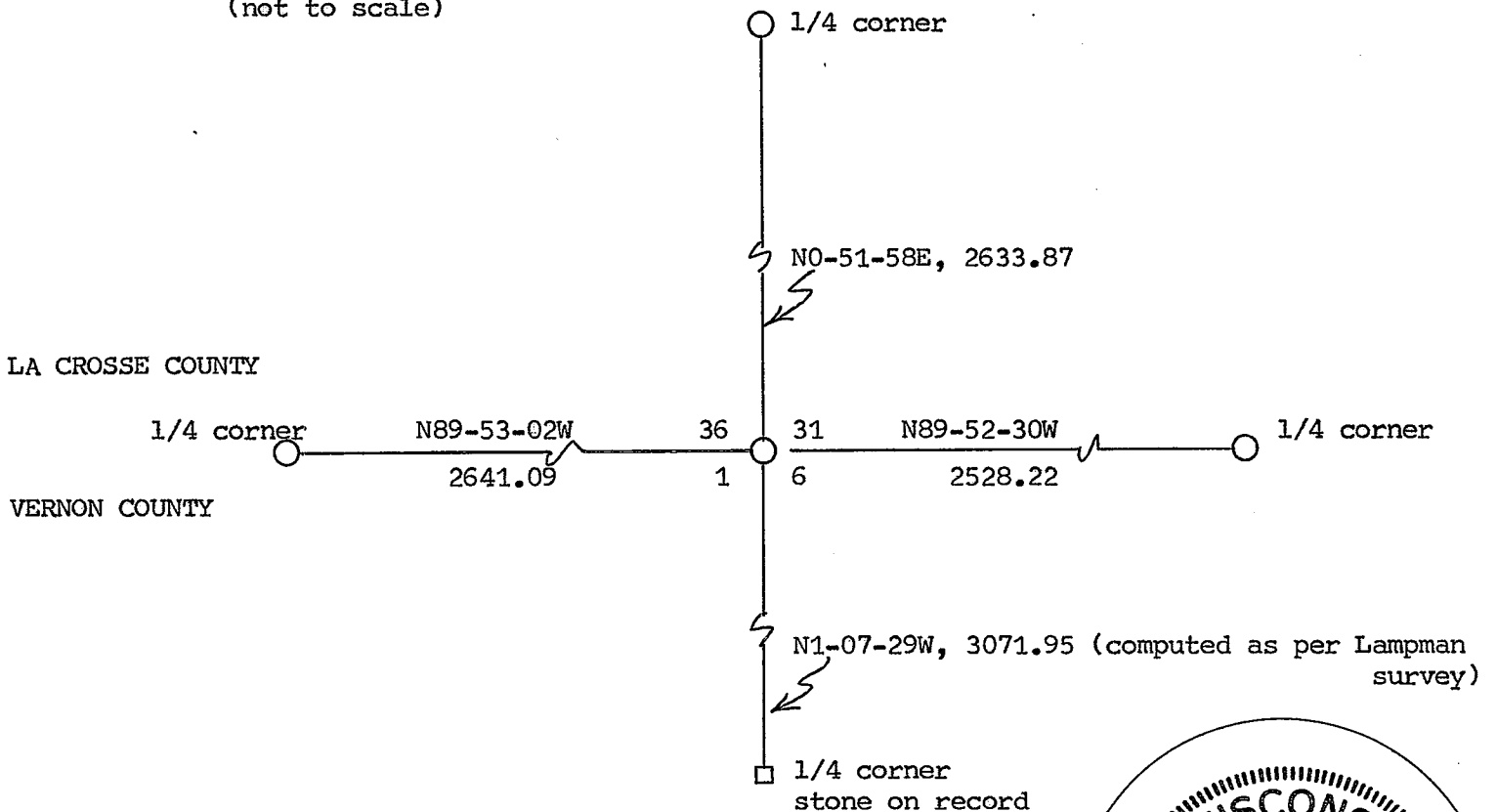
NO	DESCRIPTION	BEARING	DISTANCE
1	P.K. NAIL IN TRIPLE BOX ELDER (7")	N12°W (mag.)	24.52'
2	1" IRON PIPE (assumed)	N01°07'30"W	26.14'
3	2½" IRON PIPE (assumed)	N01°07'30"W	70.60'
4			



PLAN VIEW DRAWING OF REFERENCE TIES

MAP SHOWING DISTANCE AND DIRECTION TO OTHER PUBLIC LAND SURVEY CORNERS USED FOR REESTABLISHING THE CORNER

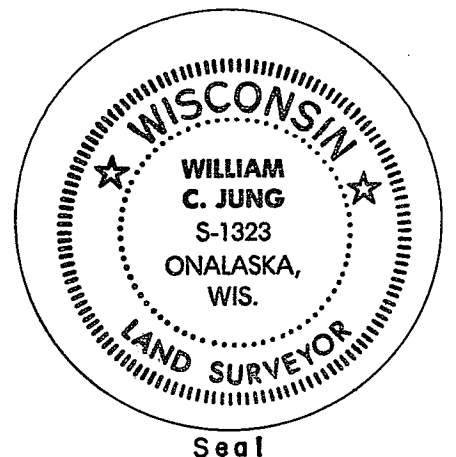
(not to scale)



I, William C. Jung, Deputy County Surveyor,  
 HEREBY CERTIFY THAT THE CORNER LOCATION SHOWN ON THIS RECORD  
 WAS DETERMINED BY ME OR UNDER MY DIRECTION AND CONTROL AND  
 THAT THIS U. S. PUBLIC LAND SURVEY MONUMENT RECORD IS CORRECT  
 AND COMPLETE TO THE BEST OF MY KNOWLEDGE AND BELIEF.

William C. Jung  
 Signature

March 6, 1987  
 Date



Seal