

FOR VERNON COUNTY, WISCONSIN

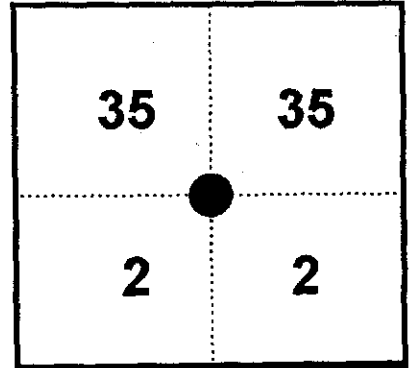
Note: This form is intended and designed to fulfill all requirements of Wisconsin Administrative Code, Chapter AE-7.08, U.S. Public Land Survey Monument Record (3)(a)(b)(c)(d)(e)(f)(g)(h)(i). Use additional sheets if necessary.

(a) The One Quarter corner common to Sections 2,35

Township(s) 14,15 North, Range(s) 7 West.

Vernon County Coordinates: N 211000.460

Datum: _____ E 624952.573

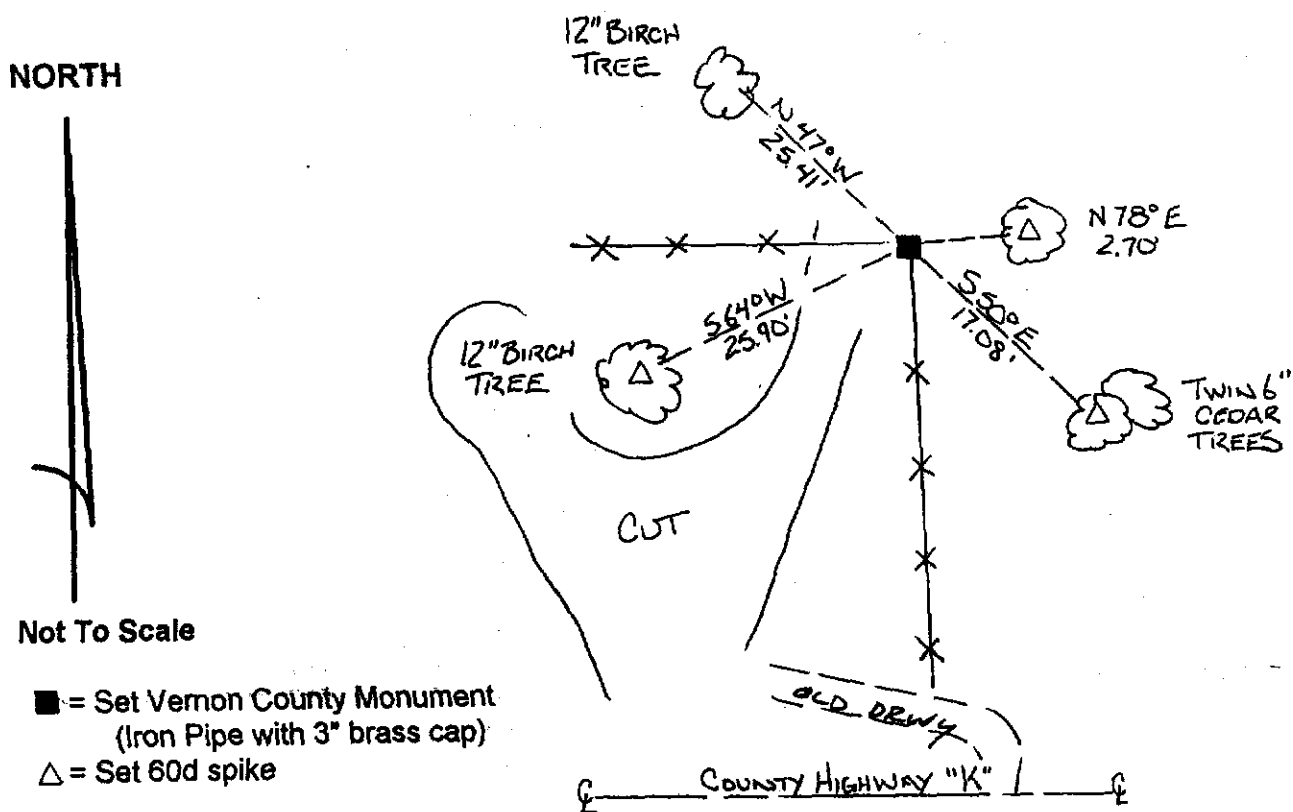


(b)(f)(h) Description of monument found at this corner and if it was accepted, state all evidence (material, testimonial, occupational, plats records, other monuments) used as a basis for accepting. If not accepted or nothing was found, state evidence used as basis for establishing location and what was set. If re-established through lost corner proportionate methods, indicate all monuments, distances and directions used.

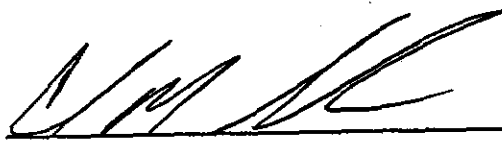
12-10-1987 - William C. Jung Found 2 1/2" angle iron used in previous surveys and accepted it as the best available evidence of the original government corner location.

12-01-1998 - Found 2 1/2" angle iron as per William C. Jung tiesheet and replaced it with a Vernon County monument

(c)(d)(e) Plan view of corner with ties to at least four (4) witness monuments. If in disagreement with previously established corner, show the distances between the two corners and also indicate ties to disputed corner.



(i) Certify that the corner location on this record was determined by me or under my direction and control and that this U.S. Public Land survey Monument Record is correct and complete to the best of my knowledge and belief.


Signature

12/30/98
Date



Filed for record in Vernon County Surveyor's Office on _____

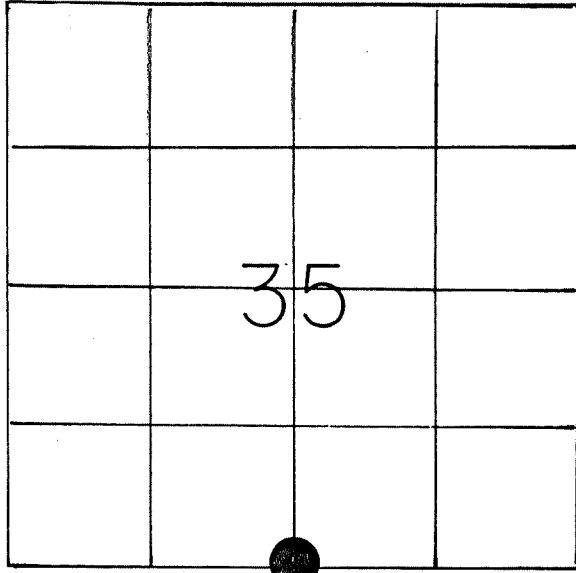
INDEX NO. _____

U. S. PUBLIC LAND SURVEY MONUMENT RECORD

SECTION 35 T 15 N, R 7 W, TOWN OF SHELBY

LA CROSSE COUNTY

N¹/₄ cor. 2-14-W 2



| |
|-----------------------------|
| WISCONSIN COORDINATE SYSTEM |
| North |
| East |
| Theta Angle |
| Horiz. Order |
| Vert. Order |
| TYPE OF LANDMARK |
| 2½" ANGLE IRON (UP 8") |
| BEARINGS ARE REFERENCED TO |
| GRID NORTH |

LOCATION OF LANDMARK

CREW: WILLIAM C. JUNG
PETER F. FOLLANSBEE

9-11-1987

Describe any record evidence, monument evidence, testimonial evidence or any other material evidence you considered and whether the monument was found or restored through acceptance of an obliterated evidence location.

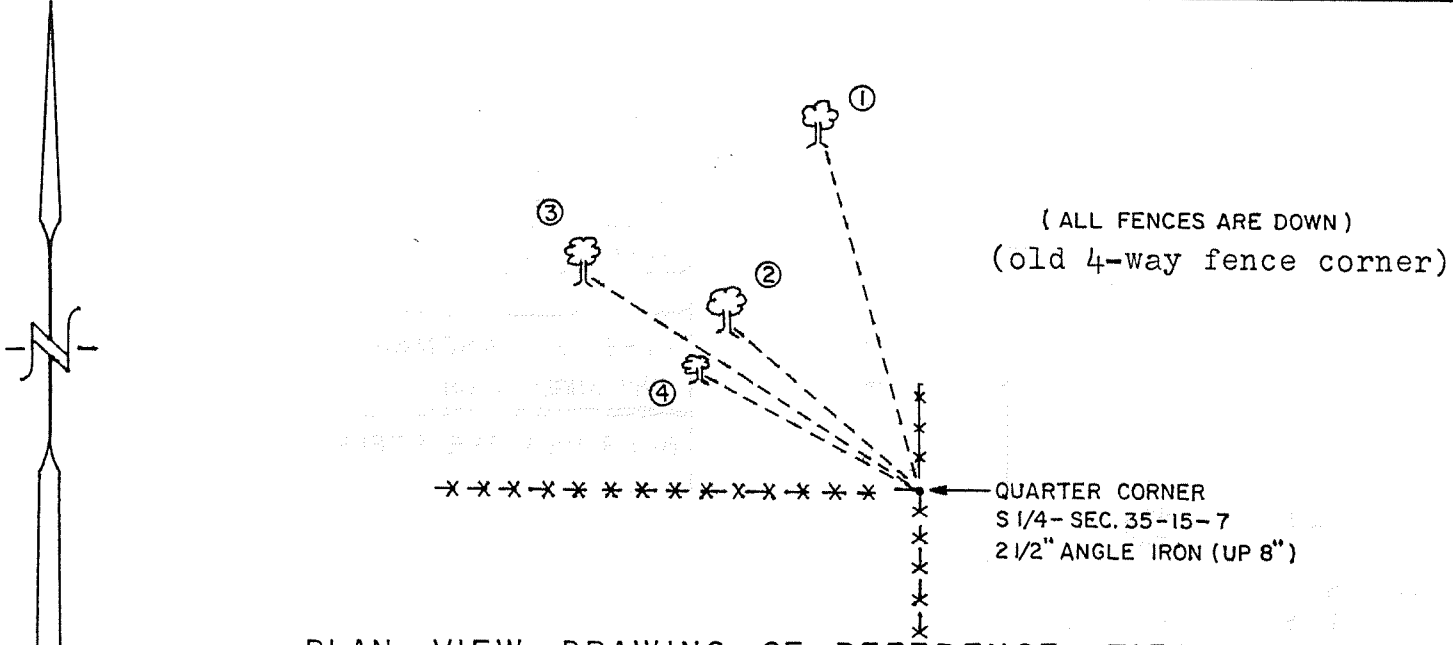
I FOUND AN ANGLE IRON AT THE OCCUPIED FENCE CORNER AND ACCEPTED THIS MONUMENT AS THE BEST AVAILABLE EVIDENCE OF THE ORIGINAL GOVERNMENT CORNER POSITION. THIS ANGLE IRON HAD ALSO BEEN USED AS THE CORNER IN PREVIOUS SURVEYS.

Describe or show any material discrepancy between the location of the restored corner and that of the corner previously restored or reestablished.

NONE KNOWN

RECORD OF DURABLE WITNESS MONUMENTS

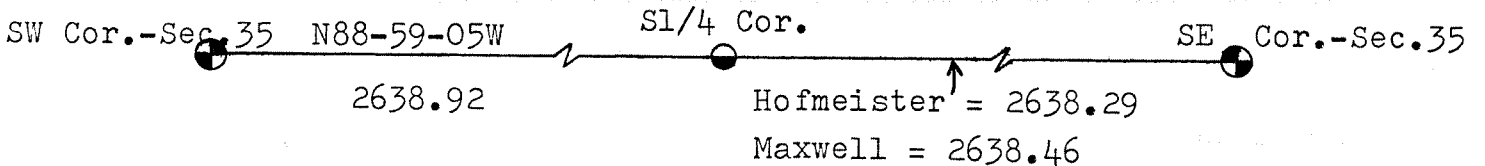
| NO | DESCRIPTION | MAGNETIC | |
|----|--|----------|----------|
| | | BEARING | DISTANCE |
| 1 | P.K. NAIL IN 7" HICKORY , DOUBLE BLAZED | N 16 W | 38.0 Ft. |
| 2 | P.K. NAIL IN 11" BIRCH , DOUBLE BLAZED | N 50 W | 25.8 Ft. |
| 3 | P.K. NAIL IN 4" HICKORY , DOUBLE BLAZED | N 58 W | 41.1 Ft. |
| 4 | P. K. NAIL IN 7" HICKORY , DOUBLE BLAZED | N 62 W | 25.5 Ft. |



PLAN VIEW DRAWING OF REFERENCE TIES

MAP SHOWING DISTANCE AND DIRECTION TO OTHER PUBLIC LAND SURVEY CORNERS USED FOR REESTABLISHING THE CORNER

(not to scale)



I, WILLIAM C. JUNG
HEREBY CERTIFY THAT THE CORNER LOCATION SHOWN ON THIS RECORD
WAS DETERMINED BY ME OR UNDER MY DIRECTION AND CONTROL AND
THAT THIS U. S. PUBLIC LAND SURVEY MONUMENT RECORD IS CORRECT
AND COMPLETE TO THE BEST OF MY KNOWLEDGE AND BELIEF.

William C. Jung Deputy County Surveyor, Dec. 10, 1987
Signature Date

