

FOR VERNON COUNTY, WISCONSIN

Note: This form is intended and designed to fulfill all requirements of Wisconsin Administrative Code, Chapter AE-7.08, U.S. Public Land Survey Monument Record (3)(a)(b)(c)(d)(e)(f)(g)(h)(i). Use additional sheets if necessary.

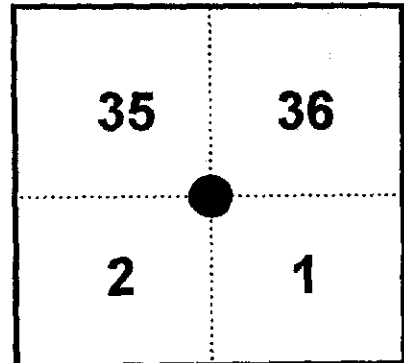
(a) The One Quarter corner common to Sections 2, 1, 35, 36

Township(s) 14, 15 North, Range(s) 7 West.

Vernon County Coordinates: N 205158.642 210 956.836

Datum: _____ E 630273.654 627 590.730

MSA results ↗



(b)(f)(h) Description of monument found at this corner and if it was accepted, state all evidence (material, testimonial, occupational, plats records, other monuments) used as a basis for accepting. If not accepted or nothing was found, state evidence used as basis for establishing location and what was set. If re-established through lost corner proportionate methods, indicate all monuments, distances and directions used.

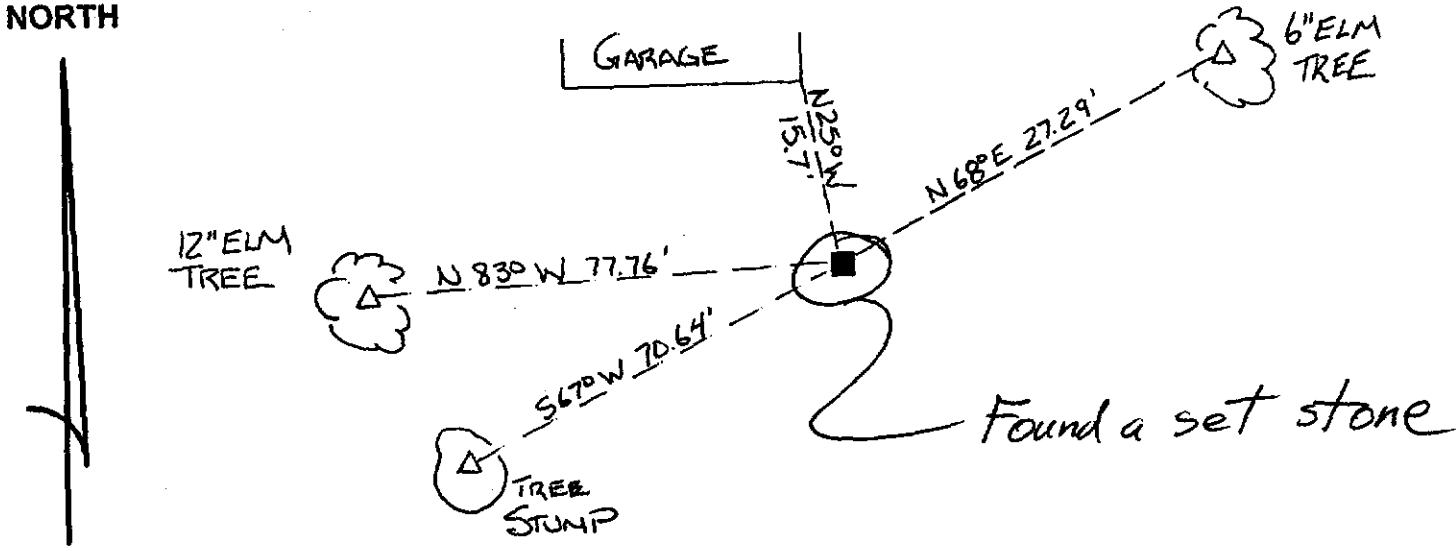
1846-1847 - Alfred L. Brown established original corner location 88.59 chains North of the Southeast corner of Section 2.

03-02-1997 - William C. Jung Found a stone at the corner and accepted it as the best available evidence of the original corner position.

12-01-1998 - Found limestone monument as per William C. Jung tiesheet

(c)(d)(e) Plan view of corner with ties to at least four (4) witness monuments. If in disagreement with previously established corner, show the distances between the two corners and also indicate ties to disputed corner.

NORTH



Not To Scale

■ = Set Vernon County Monument
(Iron Pipe with 3" brass cap)
△ = Set 60d spike

Not Found.

(I) Certify that the corner location on this record was determined by me or under my direction and control and that this U.S. Public Land survey Monument Record is correct and complete to the best of my knowledge and belief.

[Handwritten Signature]

Signature

12/30/98

Date



Filed for record in Vernon County Surveyor's Office on _____ INDEX NO. _____

202.17.002

CERTIFIED LAND CORNER

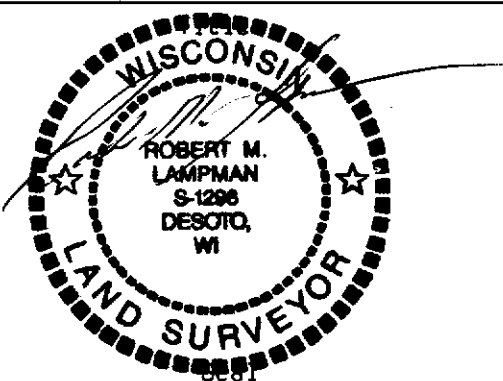
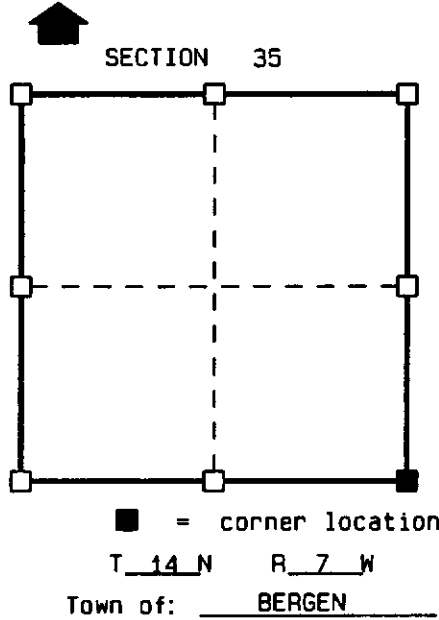
STATE OF WISCONSIN)
 COUNTY OF VERNON) S.S.

CERTIFICATE

I, ROBERT M. LAMPMAN, do hereby certify that on the 18th day of OCTOBER 1997, I found (evidence) (~~no evidence~~) of the SE corner of SECTION 35, T14 N. R 7 W, Fourth Principal Meridian, and I re-established said corner according to the Wisconsin Statutes as shown and described hereon.

Dated this 15TH day of DEC. 1997

ROBERT M. LAMPMAN R.L.S. S-1296



History of original corner establishment:

ORIGINAL CORNER ESTABLISHED BY J.E.WHITCHER IN NOVEMBER OF 1844.
 C.M.STERLING MEASURED TO THE CORNER WHILE SURVEYING IN SECTION 36-14-7 IN 1895.
 STERLING LISTED NO TIES FOR THE CORNER.

Description of corner evidence found:

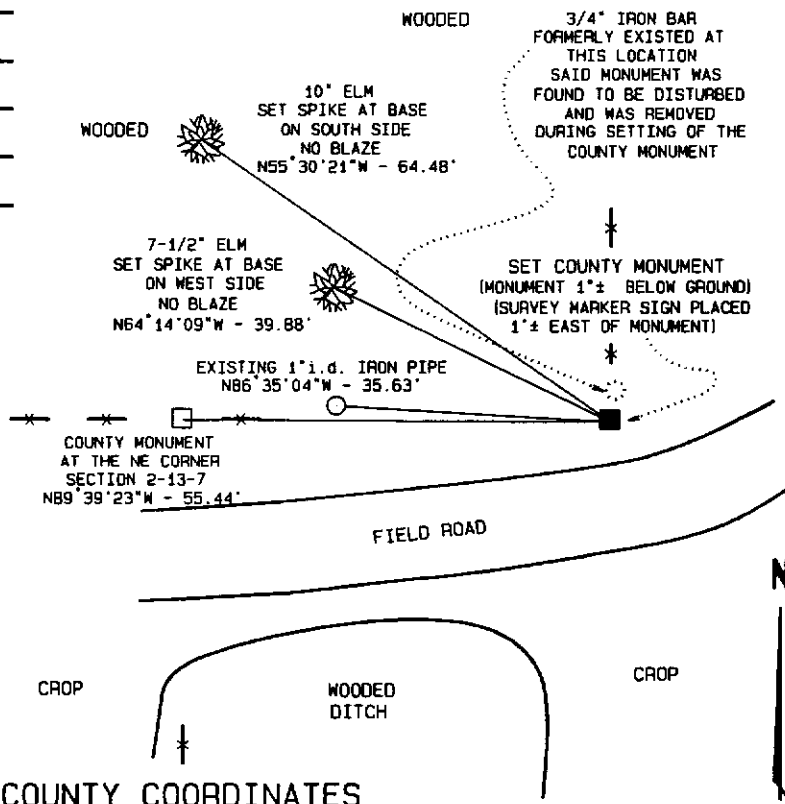
FOUND DISTURBED 3/4" IRON REBAR NEAR CORNER LOCATION. THERE WAS NO RECORD OF A REBAR OR ANY OF THE OTHER IRONS FOUND AND SHOWN BELOW. EXISTING IRON REBAR WAS TOO FAR NORTH TO FIT WITH OCCUPATION ALONG THE SOUTH LINE OF THE SW 1/4 OF SECTION 36-14-7 AND DID NOT MATCH ORIGINAL OFFSET DISTANCE FROM THE NE CORNER OF SECTION 2-13-7. ESTABLISHED CORNER AT ORIGINAL OFFSET FROM THE NE CORNER OF SECTION 2-13-7 AND ON LINE WITH THE S 1/4 CORNER OF SECTION 35-14-7 AND THE NE CORNER OF SECTION 2-13-7. SET COUNTY MONUMENT. (SAID EXISTING 3/4" IRON REBAR REMOVED DURING SETTING OF THE COUNTY MONUMENT.)

Description of corner and witness monuments, references and accessories used to perpetuate the original or re-established location of this corner:

Witnesses to corner location:

JESSICA A. ZAMOR
SHAWN R. TORGERSON
JASON W. DOESECKLE

Sketch:



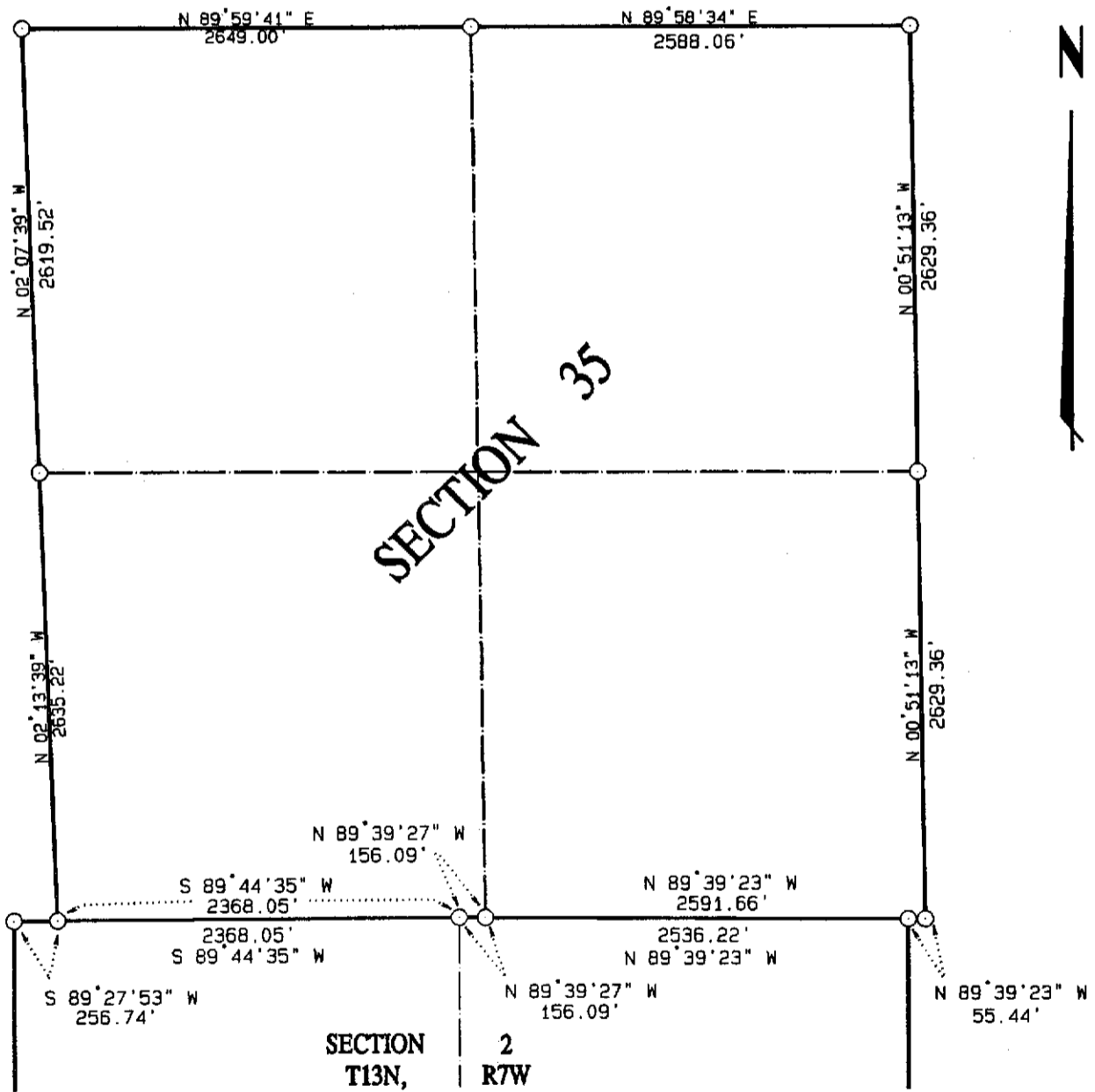
NOTES:
 BEARINGS ARE REFERENCED TO PROJECT.
 DRAWING IS NOT TO SCALE.
 COUNTY MONUMENTS ARE LUNDE MONUMENTS.

(BOTH CORNERS SET AS PART OF VERNON COUNTY'S 1997 REMONUMENTATION PROJECT.)

VERNON COUNTY COORDINATES

North (Y)	East (X)
178762.729	628038.671

DATA SHEET
SECTION 35, T14N, R7W
 TOWN OF BERGEN, VERNON COUNTY,



NOTE: ALL CORNERS ARE VERNON COUNTY MONUMENTS.

THIS DATA SHEET PREPARED AS PART OF
 VERNON COUNTY'S 1997 REMONUMENTATION PROJECT.