

FOR VERNON COUNTY, WISCONSIN

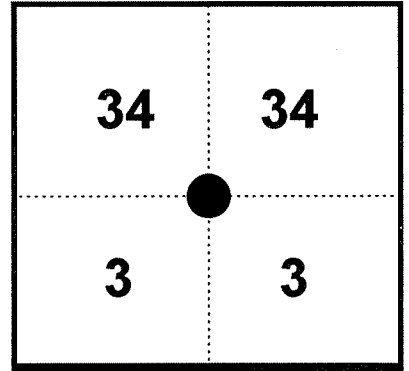
Note: This form is intended and designed to fulfill all requirements of Wisconsin Administrative Code, Chapter AE-7.08, U.S. Public Land Survey Monument Record (3)(a)(b)(c)(d)(e)(f)(g)(h)(i). Use additional sheets if necessary.

(a) The One Quarter corner common to Sections 3,34

Township(s) 14,15 North, Range(s) 7 West.

Vernon County Coordinates: N 211044.959

Datum: _____ E 619674.957

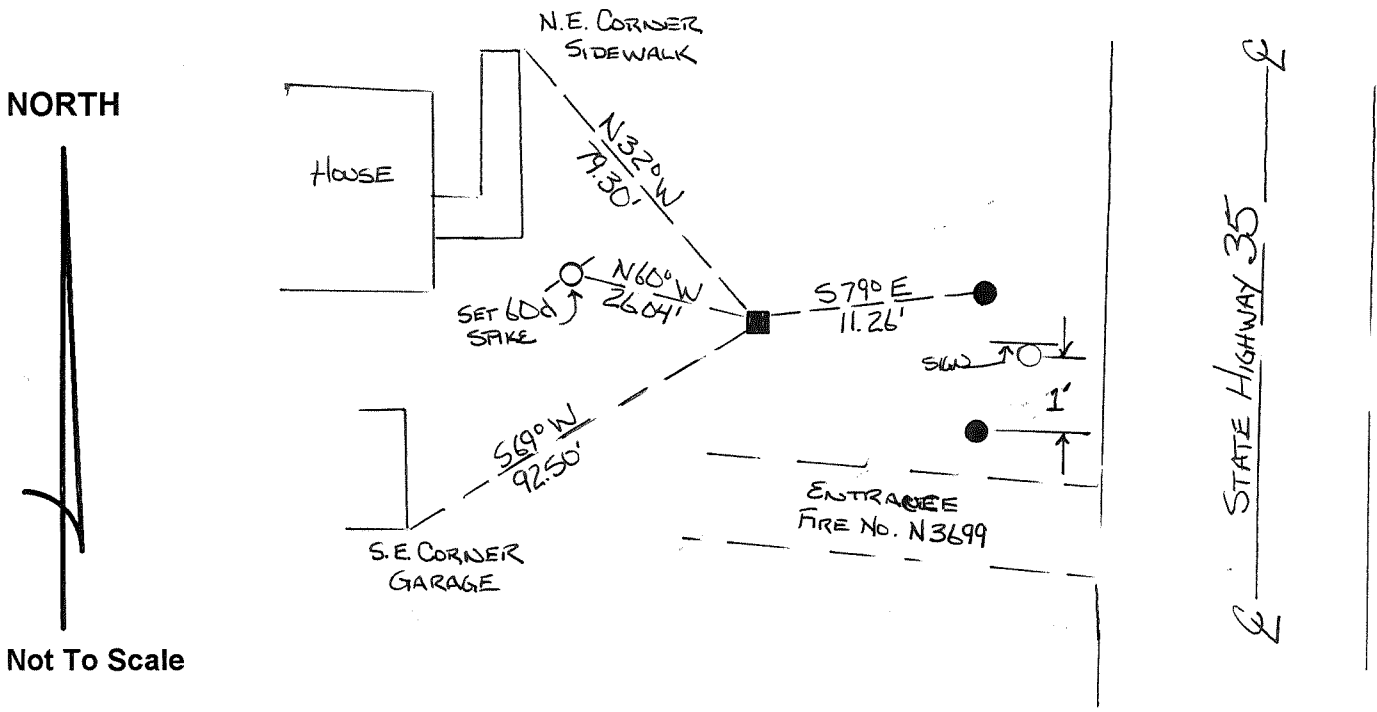


(b)(f)(h) Description of monument found at this corner and if it was accepted, state all evidence (material, testimonial, occupational, plats records, other monuments) used as a basis for accepting. If not accepted or nothing was found, state evidence used as basis for establishing location and what was set. If re-established through lost corner proportionate methods, indicate all monuments, distances and directions used.

1846 Alfred L. Brown established original corner location

November 16, 1998 - I found an Aluminum Monument and set witnesses as shown.

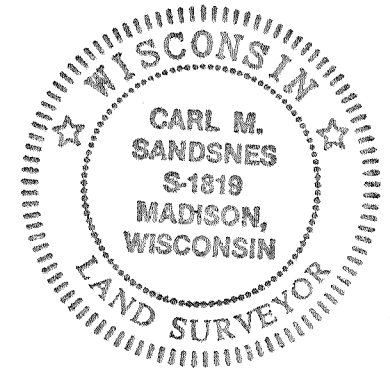
(c)(d)(e) Plan view of corner with ties to at least four (4) witness monuments. If in disagreement with previously established corner, show the distances between the two corners and also indicate ties to disputed corner.



Not To Scale

- = Found Berntsen Monument
- = Set 3/4" rebar

(I) Certify that the corner location on this record was determined by me or under my direction and control and that this U.S. Public Land survey Monument Record is correct and complete to the best of my knowledge and belief.



[Signature] _____ Date 12/31/98

Filed for record in Vernon County Surveyor's Office on _____ INDEX NO. _____

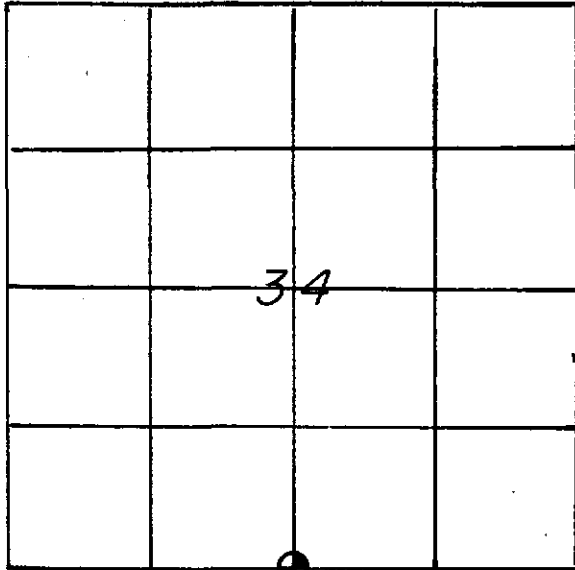
32

U. S. PUBLIC LAND SURVEY MONUMENT RECORD

SECTION 34 T 15 N, R 7 W, TOWN OF SHELBY

LA CROSSE COUNTY

N¹/₄ cor. 3-14-7W?



LOCATION OF LANDMARK

CREW:
BILL JUNG, PERRY DAHL

DATE: 9-5-86

Describe any record evidence, monument evidence, testimonial evidence or any other material evidence you considered and whether the monument was found or restored through acceptance of an obliterated evidence location.

The Corps of Engineers map shows a 3" iron pipe with a bronze cap at this corner. It was set in about 1934 or 1935. In the early 1980's Greg Hofmeister found the Corps marker. Surveyors from the D.O.T. found the Corps marker and set the top 24" of a Berntsen marker over the Corps marker on 6-18-85. After studying the Corps notes and Hofmeister's notes, this location would appear to fit the original notes along the County/Town Line very well. I accepted the Berntsen as the corner. Steve Solberg has since used this point as the corner. I could not find the Corps meander corner 126.3 feet to the West.

Describe or show any material discrepancy between the location of the restored corner and that of the corner previously restored or reestablished.

This is a "triple corner". Old highway maps show the corner to be 60 feet West of the centerline. These maps are dated 1937, 1956, and 1962. In 1984 Dick Berg found an iron pipe with a plug, 60 feet West of the centerline, and used this as the corner while surveying in Vernon County. I found an iron pipe with a plug 59.94 feet West of the centerline that was probably put in by the U.S. Fish and Wildlife Service. I do not agree with this location. Several surveys in the SE1/4 of Section 34 show the corner as being in the centerline of the highway, including surveys by Clayton Solberg. I do not agree with this location either.

South Zone

WISCONSIN COORDINATE SYSTEM

North 631,160.059

East 1,682,655.640

Theta Angle

Horiz. Order

Vert. Order

TYPE OF LANDMARK

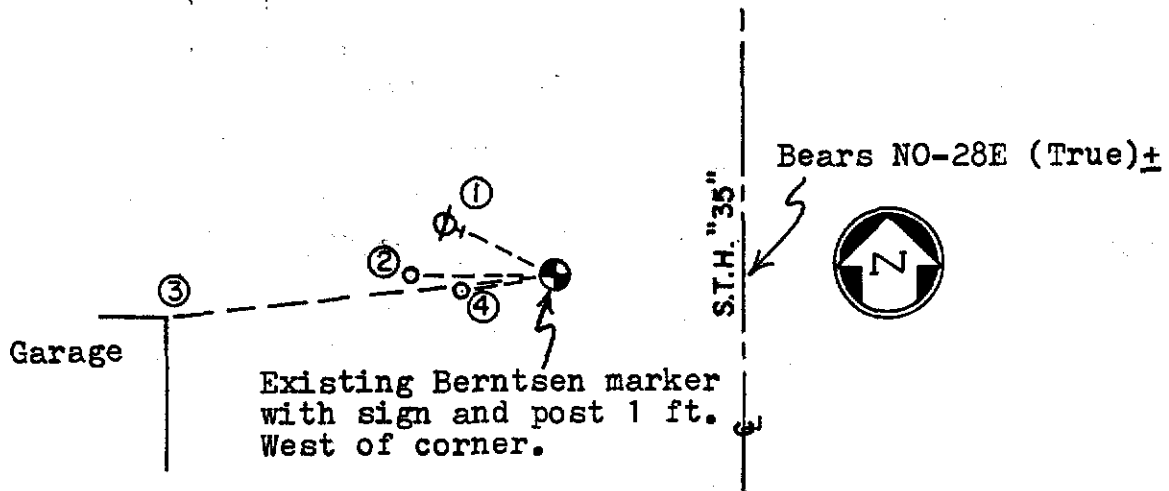
BERNTSEN (over Corps marker)

BEARINGS ARE REFERENCED TO

Grid North

RECORD OF DURABLE WITNESS MONUMENTS
TRUE

NO	DESCRIPTION	BEARING	DISTANCE
1	P.K. NAIL IN POWERPOLE (set by me)	N63-37W	25.57'
2	7/8" IRON BAR (12"long, set by me)	N89-47W	30.50'
3	NORTHEAST CORNER OF GARAGE	S83-40W	82.85'
4	Ex. CAPPED 1 1/2" IRON PIPE, "U.S. GOV. SUR-VEY" (plug)	S82-24W	20.68'
5	CENTERLINE OF U.S.H. "35"	EAST ±	39.50'



PLAN VIEW DRAWING OF REFERENCE TIES

MAP SHOWING DISTANCE AND DIRECTION TO OTHER PUBLIC LAND SURVEY CORNERS USED FOR REESTABLISHING THE CORNER

North 1/4 Corner
Sec. 34

(not to scale)

Grid bearing to the nearest second and grid distance to the nearest hundredth.

N1-37-25E, 5283.16

Grid factor = 0.9999189

South 1/4 Corner
Sec. 34

I, William C. Jung, Deputy County Surveyor,
HEREBY CERTIFY THAT THE CORNER LOCATION SHOWN ON THIS RECORD WAS DETERMINED BY ME OR UNDER MY DIRECTION AND CONTROL AND THAT THIS U. S. PUBLIC LAND SURVEY MONUMENT RECORD IS CORRECT AND COMPLETE TO THE BEST OF MY KNOWLEDGE AND BELIEF.

William C. Jung
Signature

October 6, 1986
Date

