

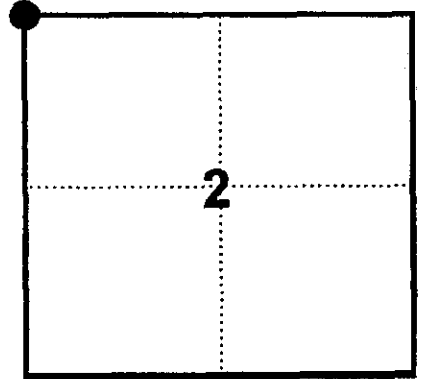
FOR VERNON COUNTY, WISCONSIN

Note: This form is intended and designed to fulfill all requirements of Wisconsin Administrative Code, Chapter AE-7.08, U.S. Public Land Survey Monument Record (3)(a)(b)(c)(d)(e)(f)(g)(h)(i). Use additional sheets if necessary.

(a) Sections 2

Township(s) 14, 15 North, Range(s) 07 West.

Vernon County Coordinates: N 211022.618
 E 622313.705

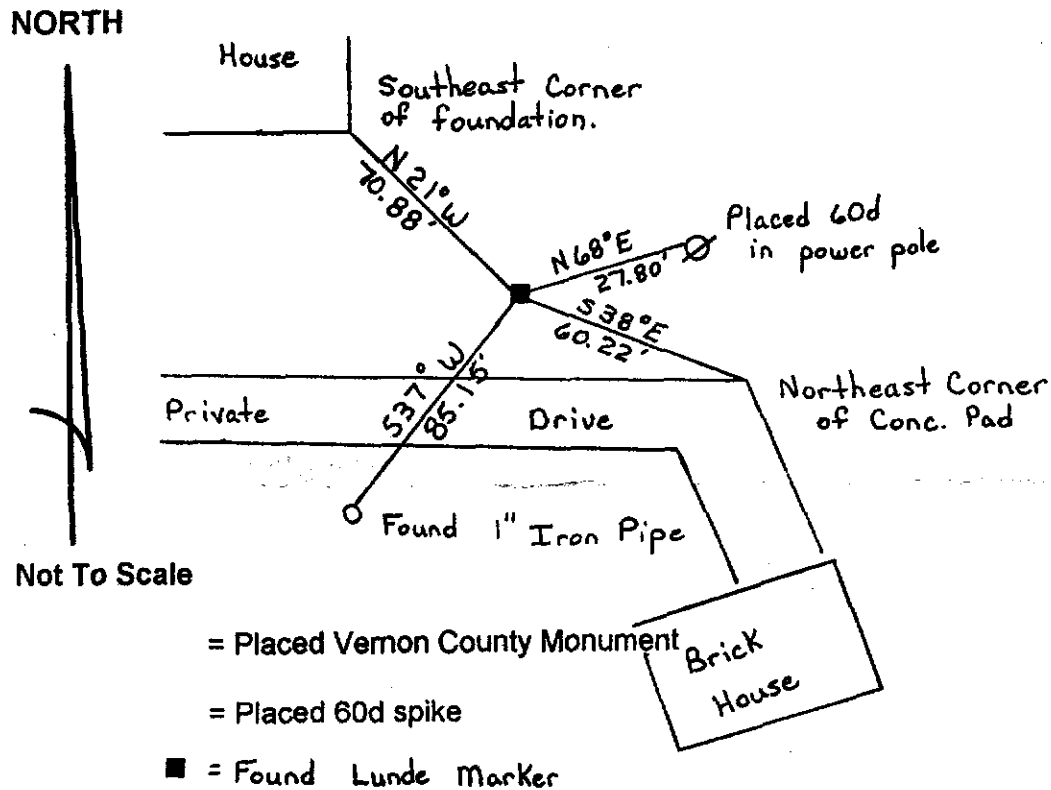


(b)(f)(h) Description of monument found at this corner and if it was accepted, state all evidence (material, testimonial, occupational, plats records, other monuments) used as a basis for accepting. If not accepted or nothing was found, state evidence used as basis for establishing location and what was set. If re-established through lost corner proportionate methods, indicate all monuments, distances and directions used.

December 10, 1987 - William C. Jung set a Lunde Marker midway between the South 1/4 corner of Section 35, T15N - R07E, and the South 1/4 corner of Section 34, T15N - R07E.

November 16, 1998 - I found the Lunde Marker and set witnesses as shown.

(c)(d)(e) Plan view of corner with ties to at least four (4) witness monuments. If in disagreement with previously established corner, show the distances between the two corners and also indicate ties to disputed corner.



(I) Certify that the corner location on this record was determined by me or under my direction and control and that this U.S. Public Land survey Monument Record is correct and complete to the best of my knowledge and belief.

Carl M. Sandsnes December 31, 1998.
 Signature Carl M. Sandsnes Date

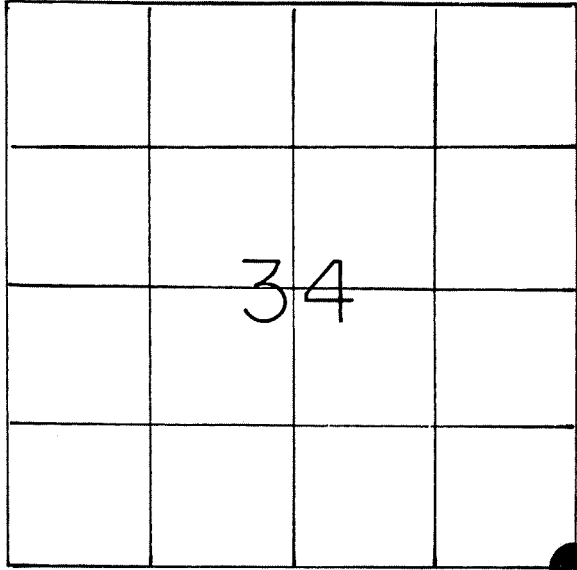
Filed for record in Vernon County Surveyor's Office on _____ INDEX NO. _____

U. S. PUBLIC LAND SURVEY MONUMENT RECORD

SECTION 34 T 15 N, R 7 W, TOWN OF SHELBY

LA CROSSE COUNTY

NE cor. 3-14-70?



LOCATION OF LANDMARK

CREW: WILLIAM C. JUNG
 PETER F. FOLLANSBEE
 09-21-1987

WISCONSIN COORDINATE SYSTEM

North

East

Theta Angle

Horiz. Order

Vert. Order

TYPE OF LANDMARK

SET LUNDE MARKER IN LAWN, w/4x4" SIGN & POST

BEARINGS ARE REFERENCED TO

GRID NORTH

Describe any record evidence, monument evidence, testimonial evidence or any other material evidence you considered and whether the monument was found or restored through acceptance of an obliterated evidence location.

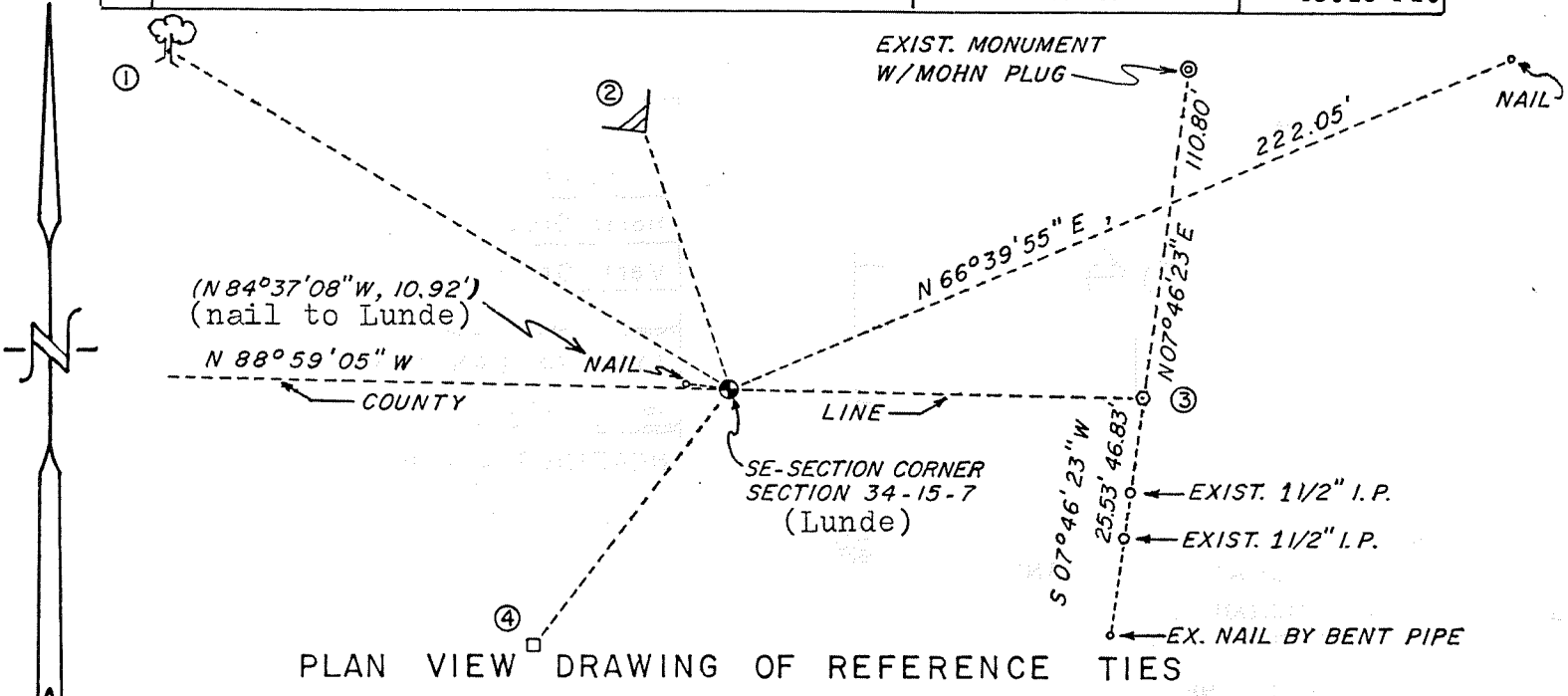
SET BRASS CAP LUNDE MARKER IN LAWN, SAID CORNER SET EQUIDISTANT BETWEEN ACCEPTED QUARTER CORNERS ON LA CROSSE / VERNON COUNTY LINE. SET AS DESIGNATED BY THE STATUTES.

Describe or show any material discrepancy between the location of the restored corner and that of the corner previously restored or reestablished.

THE VARIOUS PROPERTY DESCRIPTIONS FOR THE SURROUNDING LOTS START AT A CORNER LOCATION THAT I DO NOT AGREE WITH. GIVEN THE EXISTING FIELD EVIDENCE ALONG THE COUNTY/TOWN LINE, I FEEL THAT TO SET THE CORNER BY SINGLE PROPORTIONATE MEASUREMENT IS THE BEST METHOD.

RECORD OF DURABLE WITNESS MONUMENTS

NO	DESCRIPTION	BEARING	DISTANCE
1	CENTER OF 17" WHITE OAK, UNBLAZED	MAG. = N 59° W	394.4± FT.
2	EXIST. CORNER OF HOUSE, CONCRETE EDGE	N 17°33'35" W	70.9 FT.
3	SET 1¼" x 20" HEXAGON DRILL BIT, ON LINE	N 88°59'05" W	108.24 FT.
4	EXISTING 1" IRON PIPE IN CONCRETE	S 38°13'40" W	85.10 FT.

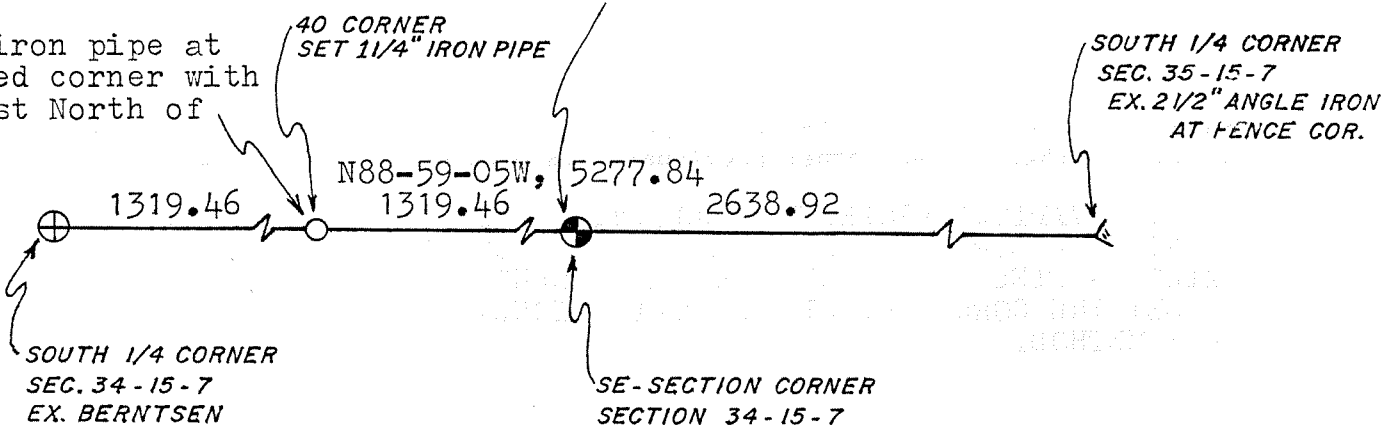


MAP SHOWING DISTANCE AND DIRECTION TO OTHER PUBLIC LAND SURVEY CORNERS USED FOR REESTABLISHING THE CORNER

NOT TO SCALE

Set a brass capped Lunde Marker, down 1", in a lawn with a 4"x4" post w/sign to the East of it, and also buried a champagne bottle w/note West of and next to the bottom of the Lunde Marker.

Set a 1¼" iron pipe at the occupied corner with a 4"x4" post North of the pipe.



I, WILLIAM C. JUNG
 HEREBY CERTIFY THAT THE CORNER LOCATION SHOWN ON THIS RECORD
 WAS DETERMINED BY ME OR UNDER MY DIRECTION AND CONTROL AND
 THAT THIS U. S. PUBLIC LAND SURVEY MONUMENT RECORD IS CORRECT
 AND COMPLETE TO THE BEST OF MY KNOWLEDGE AND BELIEF.

William C. Jung Deputy County Surveyor, December 10, 1987
 Signature Date

