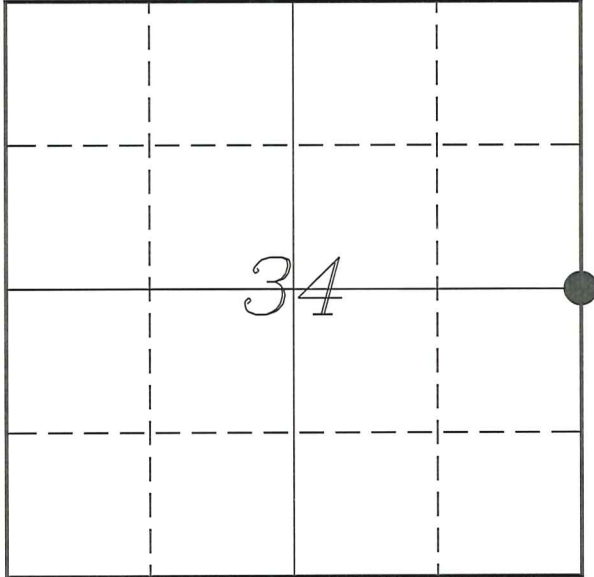


U. S. PUBLIC LAND SURVEY MONUMENT RECORD

SECTION 34, T14N, R5W, TOWN OF COON
VERNON COUNTY, WISCONSIN



LOCATION OF LANDMARK

VERNON COUNTY COORDINATE SYSTEM	
Northing	181743.321
Easting	685858.171
Datum	NAD 1983 (2011)
Elevation	
Datum	
TYPE OF LANDMARK:	
No Monument at Corner	
BEARINGS ARE REFERENCED TO:	
Vernon County Coordinates (Survey Grade)	

Witnesses: Laurence E Johns III

Date: 30 July 2020

Describe or show any material discrepancy between the location of the restored corner and that of the corner previously restored or re-established.

A L Brown established this corner in October 1846.

Wm Kowner was at this corner, in September 1885, during surveys in Sections 27 & 34. He shows the corner as being lost..

Dwayne Hefner was at this corner, in February 2001, during a survey in Section 35. He shows that he set a 1 1/4" iron rod.

F Curtis Crook was at this corner, in October 2002, during a survey in Section 35. He shows he set a Lunde Monument at the mid-point and prepared a tie sheet.

Christian Running was at this corner, in November 2006, during a survey in Section 34. He shows he found a Lunde Monument.

Describe any record evidence, monument evidence, testimonial evidence or any other material evidence you considered and whether the monument was found or restored through acceptance of an obliterated evidence location.

No bearing trees of record were located.

I found the ties and sign set by Crook, but the location for the corner would place it in the middle of a 9" pine. The pine tree appears to be older than 18 years.

Crook shows the corner set by Hefner but he was unaware of its origin at the time. Most likely the survey by Hefner wasnt recorded yet or did not find it.

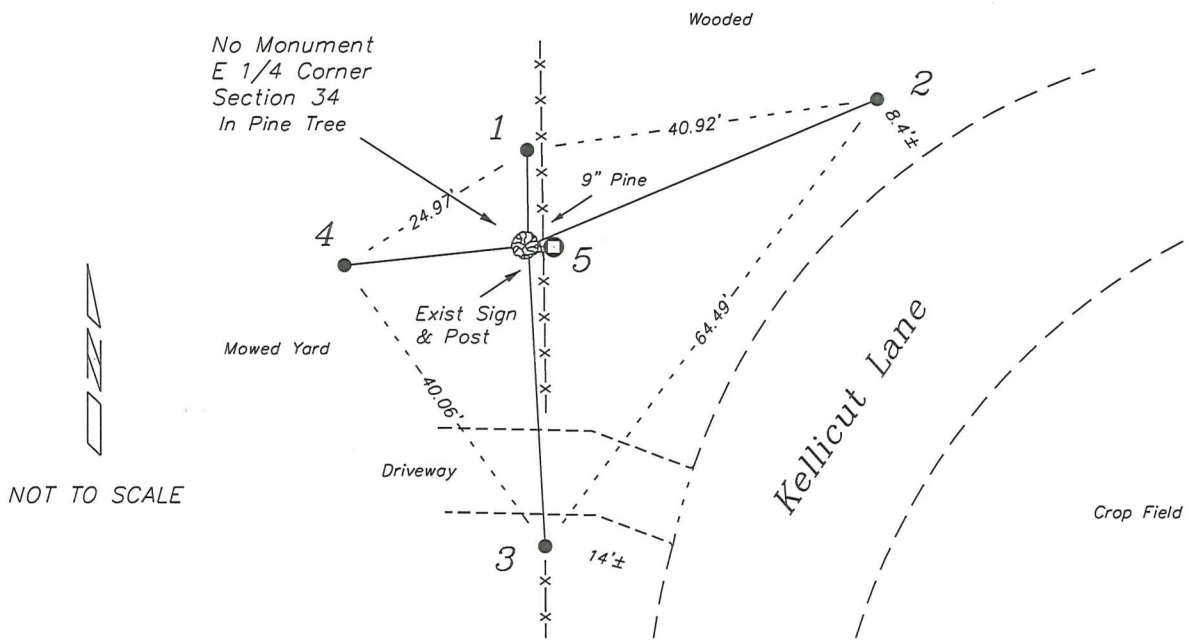
Hefner does not indicate why he set the corner where he did, nor did he prepare a tie sheet.

I recreated the location of the Crook's corner using all 4 of his ties. Because the corner lands within the tree, I could not set a monument at the corner. I set a 2 inch brass reference marker 2.33' East as shown and referenced on the sketch.

Bearing/Distances shown on this monument record is from the location of the actual corner.

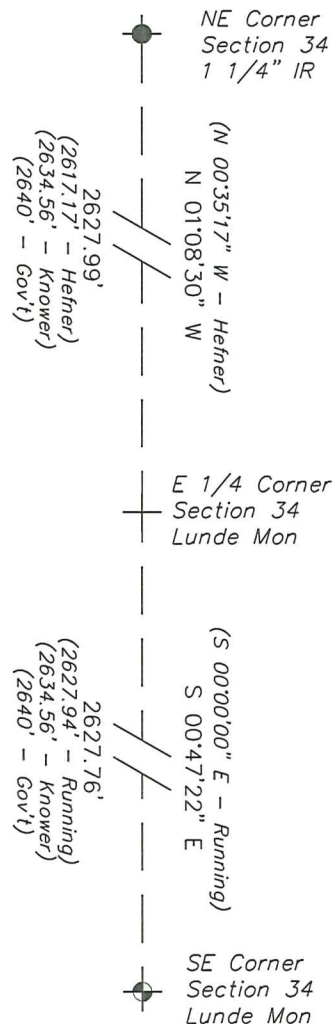
RECORD OF DURABLE WITNESS MONUMENTS

NO	DESCRIPTION	BEARING	DISTANCE
1	Existing 1 1/4" Iron Rod From Hefner Survey	N 00°35'28" W (N 01°31'21" W)	11.07' (11.00')
2	Existing 3/4" Iron Rod In Grassy Area	N 67°15'01" E (N 67°04'56" E)	43.79' (43.68')
3	Existing 3/4" Iron Rod 1' North of Southern Gate Post	S 03°12'12" E (S 02°56'45" E)	34.91' (34.84')
4	Existing 3/4" Iron Rod In Mowed Yard	S 84°03'57" W (S 84°17'15" W)	21.37' (21.26')
5	Set 1" x 30" Rod with 2" Brass Disk As Reference Mark	S 87°47'13" E	2.33'



PLAN VIEW DRAWING OF REFERENCE TIES

Map Showing Distance And Direction To Other Public Land Survey Corners Used For Re-Establishing The Corner



I, Laurence E Johns III PLS 2804, Professional Land Surveyor, hereby certify that the corner location shown on this record was determined by me or under my direction and control, and that this U.S. Public Land Survey Monument Record is correct and complete to the best of my knowledge and belief.

VERNON COUNTY CERTIFIED U.S. PUBLIC LAND SURVEY MONUMENT RECORD

INSTRUCTIONS: THIS RECORD SHALL SHOW THE LOCATION OF THE CORNER AND SHALL INCLUDE ALL OF THE FOLLOWING ELEMENTS (A-I)

(A) IDENTIFY THE CORNER BY REFERENCE TO THE U.S. PUBLIC LAND SURVEY SYSTEM

West 1/4 Section 35, T14N, R5W

☐ = CORNER MONUMENT RESTORED

WITNESSES TO CORNER LOCATION:

- 1) Curtis Crook
- 2) Chad Crook
- 3) Jim Ledman

STATE PLANE COORDINATES (WISCONSIN SOUTH ZONE)

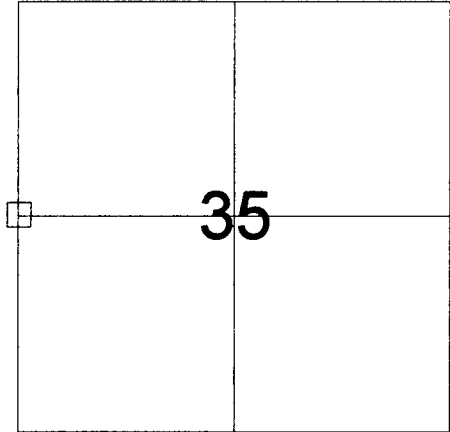
NORTHING:

EASTING:

VERNON COUNTY COORDINATES

NORTHING: 181743.08

EASTING: 685858.10



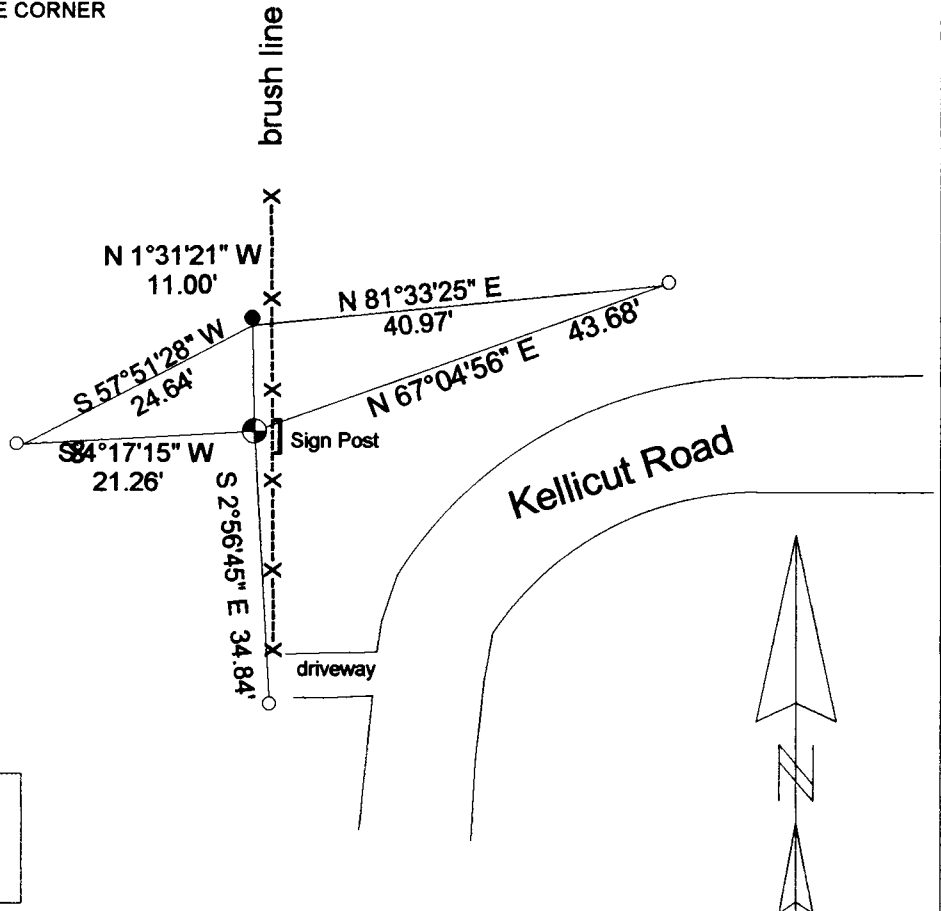
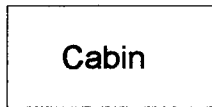
SECTION 35, TOWN 14 NORTH, RANGE 5 WEST

(B) DESCRIBE ANY RECORD EVIDENCE, MONUMENT EVIDENCE, OCCUPATIONAL EVIDENCE, TESTIMONIAL EVIDENCE OR ANY OTHER MATERIAL EVIDENCE YOU CONSIDERED, AND WHETHER THE MONUMENT WAS FOUND OR PLACED.

With north line of Section 2, T13R5W being south of Esofea Road, make the existing 40 corners along the west line of Section 35 match very well. Found no reference to the 1 1/4" Iron Bar found or the P.K. found near the SW corner of 35 in the centerline of Esofea Road.

(C) IN THE PLAN VIEW DRAWING BELOW, PROVIDE REFERENCE TIES TO AT LEAST 4 WITNESS MONUMENTS OR, IF THE LOCATION IS WITHIN A MUNICIPALITY, TO AT LEAST 2 WITNESS MONUMENTS. (WITNESS MONUMENTS SHALL BE MADE OF CONCRETE, NATURAL STONE, IRON, OR OTHER EQUALLY DURABLE MATERIAL.) DESCRIBE WITNESS MONUMENTS.

(D) SHOW A PLAN VIEW DRAWING, DEPICTING THE RELEVANT MONUMENTS AND REFERENCE TIES, WHICH IS SUFFICIENTLY DETAILED TO ENABLE ACCURATE RELOCATION OF THE CORNER MONUMENT IF IT IS DISTURBED.



- ⊕ = Vernon Co. Monument set
- = 3/4" x 24" Iron Bar set
- = 1.25" Iron Bar found

clcs535wqp1

(E) DESCRIBE ANY MATERIAL DISCREPENCY BETWEEN THE LOCATION OF THE CORNER AS RESTORED OR REESTABLISHED AND THE LOCATION OF THAY CORNER AS PREVIOUSLY RESTORED OR REESTABLISHED BY DISTANCE AND DIRECTION. SHOW THE DISCREPENCY ON THE PLAN VIEW DRAWING UNDER (D), ABOVE. SHOW THE DISTANCES BETWEEN THE CORNER AS PREVIOUSLY RESTORED OR REESTABLISHED AND (1) THE CORNER AS RESTORED OR REESTABLISHED, AND (2) TO AT LEAST 2 OF THE WITNESS MONUMENTS AS SHOWN ON THE DRAWING IN (D), ABOVE.

Could find no reason for the bar that was found near corner location.

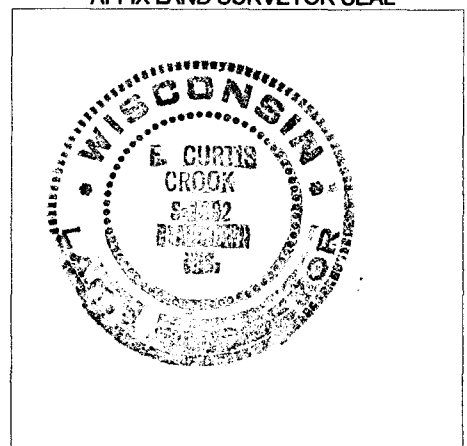
(F) WAS THE CORNER RESTORED THROUGH ACCEPTANCE OF (1) AN OBLITERATED EVIDENCE LOCATION, OR (2) A FOUND PERPETUATED LOCATION?

An Obliterateded Evidence Location.

(G & H) WAS THE CORNER REESTABLISHED THROUGH LOST CORNER PROPORTIONED METHODS? IF SO SHOW THE METHOD, INCLUDING THE DIRECTION AND DISTANCES TO OTHER PUBLIC LAND SURVEY CORNERS USED AS EVIDENCE OR USED FOR PROPORTIONING IN DETERMINING THE CORNER LOCATION.

Not Applicable

AFFIX LAND SURVEYOR SEAL



(I) I, F. CURTIS CROOK, CERTIFY THAT THE LOCATION SHOWN ON THIS RECORD WAS DETERMINED BY ME OR UNDER MY DIRECTION AND CONTROL AND THAT THIS U.S. PUBLIC LAND SURVEY MONUMENT RECORD IS CORRECT AND COMPLETE TO THE BEST OF MY KNOWLEDGE AND BELIEF.

F. Curtis Crook 10-28-02
SIGNATURE DATE