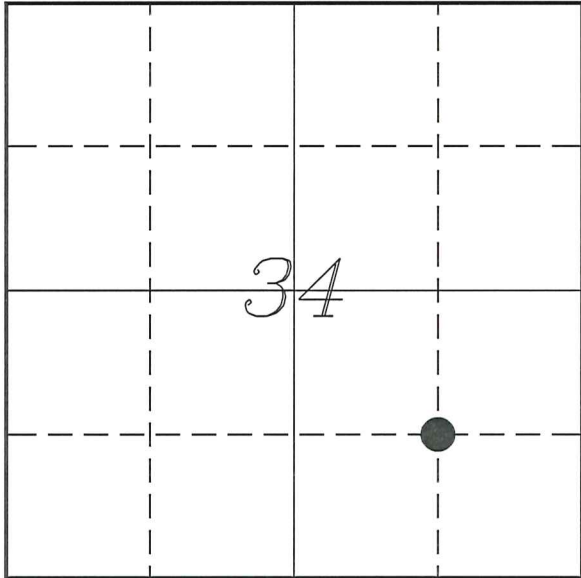


U. S. PUBLIC LAND SURVEY MONUMENT RECORD
NON-PLSS CORNER

SECTION 34, T14N, R5W, TOWN OF COON
VERNON COUNTY, WISCONSIN



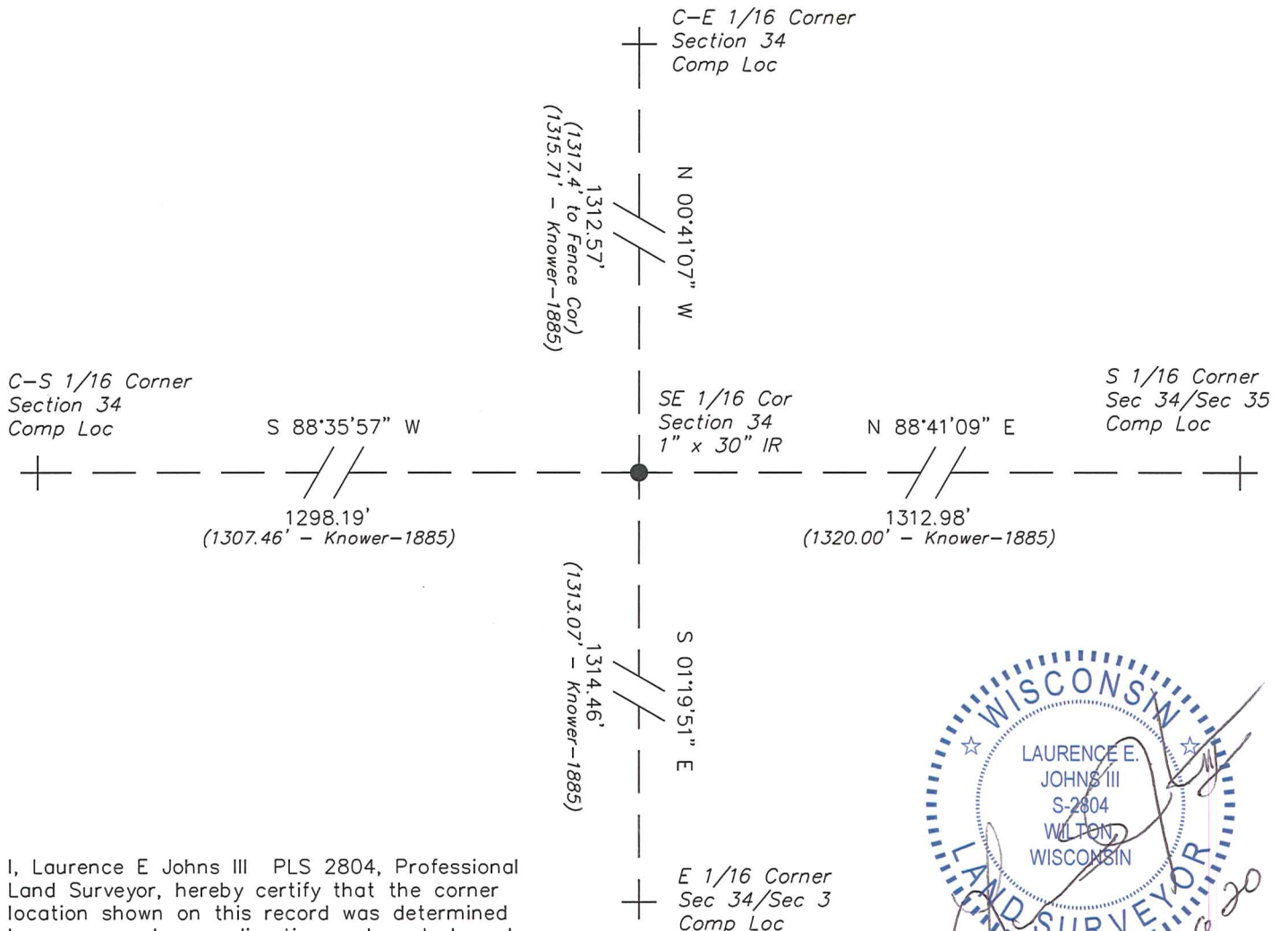
LOCATION OF LANDMARK

VERNON COUNTY COORDINATE SYSTEM	
Northing	180399.057
Easting	684563.428
Datum	NAD 1983 (2011)
Elevation	
Datum	
TYPE OF LANDMARK:	
Set 1" x 30" Iron Rod	
BEARINGS ARE REFERENCED TO:	
Vernon County Coordinates (Survey Grade)	

Witnesses: Laurence E Johns III

Date: 5 August 2020

Map Showing Distance And Direction To Other Public Land Survey Corners



I, Laurence E Johns III PLS 2804, Professional Land Surveyor, hereby certify that the corner location shown on this record was determined by me or under my direction and control, and that this U.S. Public Land Survey Monument Record is correct and complete to the best of my knowledge and belief.

WISCONSIN
LAURENCE E. JOHNS III
S-2804
WILTON, WISCONSIN
LAND SURVEYOR
8 Aug 20