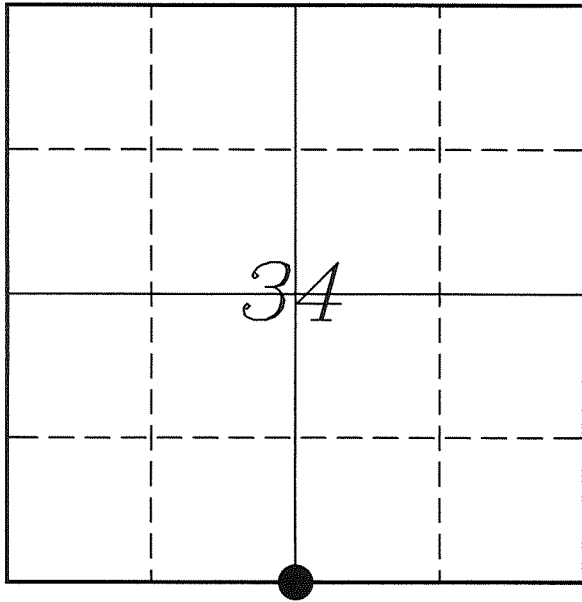


---

# U. S. PUBLIC LAND SURVEY MONUMENT RECORD

---

## SECTION 34, T14N, R5W, TOWN OF COON VERNON COUNTY, WISCONSIN



LOCATION OF LANDMARK

Crew: Laurence E Johns III  
Larry Handschy  
Jeremy Zellmer

Date: 20 April 2010

VERNON COUNTY COORDINATE SYSTEM	
Northing	179054.644
Easting	683293.888
Datum	NAD 1983 (2007)
Elevation	
Datum	
TYPE OF LANDMARK:	
Set Lunde Monument	
BEARINGS ARE REFERENCED TO:	
Vernon County Coordinates	

---

*Describe any record evidence, monument evidence, testimonial evidence or any other material evidence you considered and whether the monument was found or restored through acceptance of an obliterated evidence location.*

No bearing trees of record were located.

Found a 1" Iron Pipe approximately 19 feet West of the fence corner. There is no known record of the origin of this pipe.

The fence running north from this fence corner varies somewhat due to a drainage wash.

Measured the fence further to the North and found that the fence along the center of section and 1/4 mile in each direction lines up with the N 1/4 Corner and this fence corner.

Accepted this location as being the best available evidence of the original government corner and placed a Lunde Monument.

---

*Describe or show any material discrepancy between the location of the restored corner and that of the corner previously restored or re-established.*

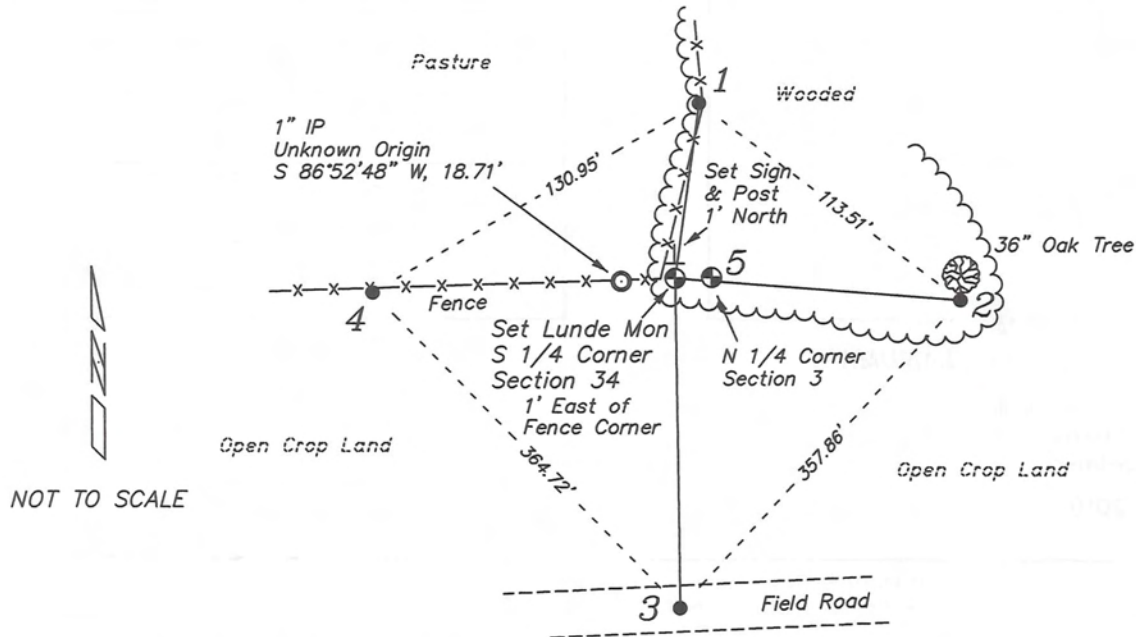
J E Whitcher established this corner in November 1844.

Wm Knower was at this corner, in September 1885, during a survey in Section 34. He shows the town line being from a former survey.

Wm Knower was in the area, in November 1885, during a survey in Section 3. He again shows the town line being from a former survey.

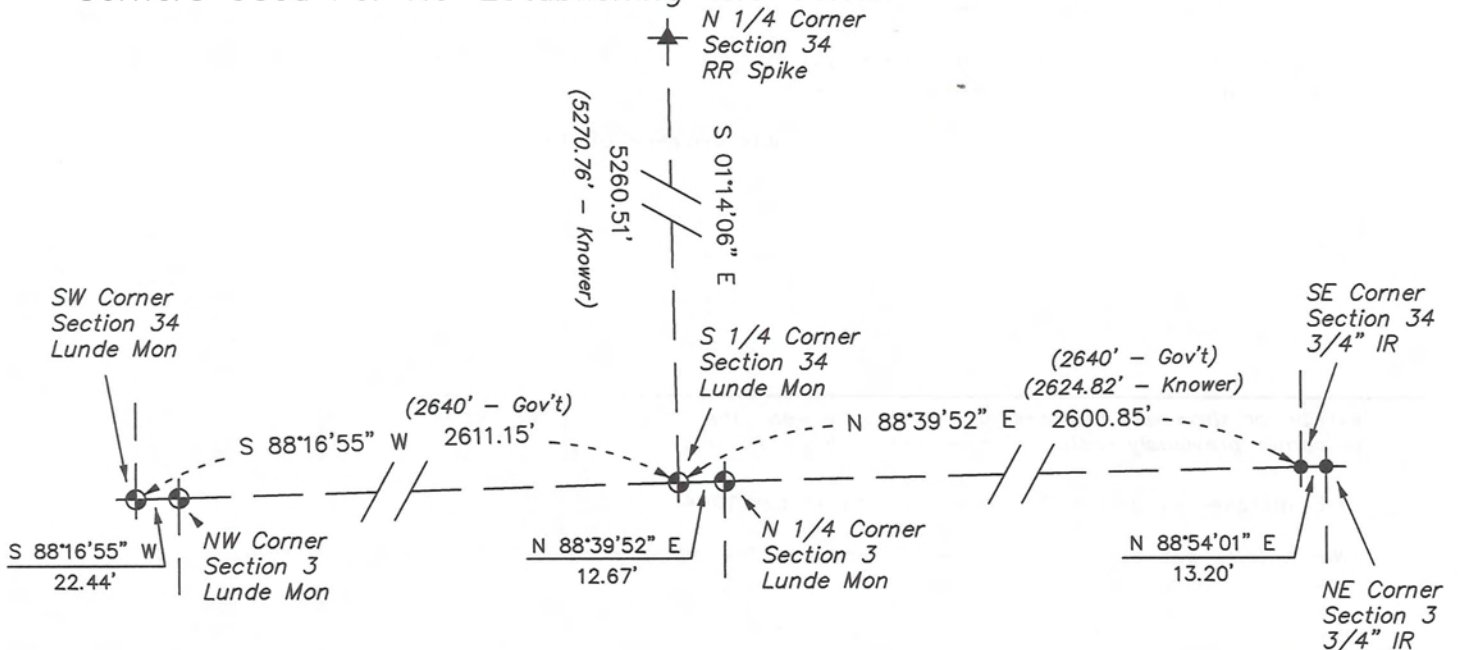
# RECORD OF DURABLE WITNESS MONUMENTS

NO	DESCRIPTION	BEARING	DISTANCE
1	Set 3/4" x 18" Iron Rod In Fence Line	N 07°54'11" E	61.39'
2	Set 3/4" x 18" Iron Rod South Side of 36" Oak Tree	S 85°32'42" E	99.24'
3	Set 3/4" x 18" Iron Rod Center of Field Road	S 00°41'10" E	352.84'
4	Set 3/4" x 18" Iron Rod In Fence Line	S 87°23'00" W	105.00'
5	Lunde Monument N 1/4 Corner - Section 3	N 88°39'52" E	12.67'

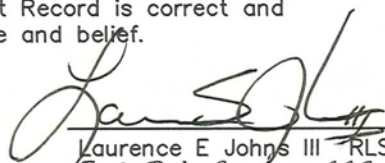


## PLAN VIEW DRAWING OF REFERENCE TIES

Map Showing Distance And Direction To Other Public Land Survey Corners Used For Re-Establishing The Corner



I, Laurence E Johns III RLS 2804, Registered Land Surveyor, hereby certify that the corner location shown on this record was determined by me or under my direction and control, and that this U.S. Public Land Survey Monument Record is correct and complete to the best of my knowledge and belief.

  
 Laurence E Johns III RLS 2804  
 Eagle Ridge Surveying, LLC  
 PO Box 213  
 Wilton, Wisconsin  
 20 April 2010

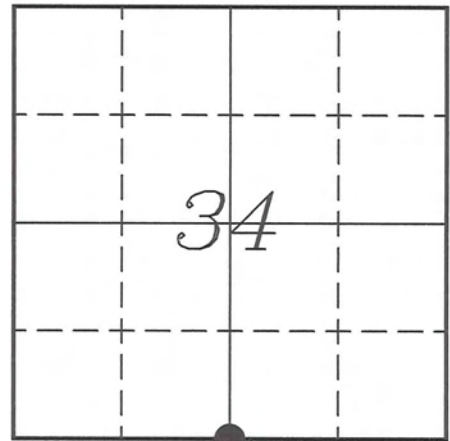


**VERNON COUNTY COORDINATE SUBMISSION FORM**  
**"As An Addendum To"**  
**VERNON COUNTY**  
**CERTIFIED U.S. PUBLIC LAND SURVEY MONUMENT RECORD**

INSTRUCTIONS: THIS RECORD FORM SHOULD BE USED WHEN COORDINATES ARE PROVIDED FOR A PUBLIC LAND SURVEY CORNER AND SHALL INCLUDE ALL OF THE FOLLOWING ELEMENTS (A-D)

(A) IDENTIFY THE CORNER BY REFERENCE TO THE U.S. PUBLIC LAND SURVEY SYSTEM IN DIAGRAM AT RIGHT

● = CORNER MONUMENT



T 14 N, R 5 W

(B) COORDINATES:

GEOGRAPHIC (Degrees Minutes Seconds)

LATITUDE: 43° 38' 17.8557" N

LONGITUDE: 90° 57' 35.1038" W

ELLIPSOID HT (m): \_\_\_\_\_

DATUM: NAD 1983 (2007)

GEOID03 ADJ: -32.518

ORTHOMETRIC HT: \_\_\_\_\_

VERNON COUNTY (U.S. FEET)

Coord Quality (+/-)

NORTHING (Y): 179054.644 \_\_\_\_\_

EASTING (X): 683293.888 \_\_\_\_\_

GPS METHOD USED TO COMPUTE COORDINATES (check as applicable)

RTK Observations     Static Baselines     OPUS-RS Solution     OPUS-S Solution  
 Combination of GPS Observations & Conventional Procedures

Was a Least Squares Adjustment Used to Compute Coordinates? Yes /  No

BASE CONTROL USED FOR COORDINATE COMPUTATION

Station Name	Station Coordinates	Date/Time
<u>OPUS Control - CN34</u>	<u>43° 38' 51.5548" N 90° 57' 40.3727" W</u>	<u>04/20/2010 - 16:01</u>
	<u>N - 182467.812 E - 682913.711</u>	
<u>Same</u>		<u>5/23/2010 - 07:59</u>

(C) REASON FOR COORDINATES SUBMITTAL (check one)

Being Filed With a New U.S. PLS Monument Record  
 To Correct the Coordinates Listed on a Previously Filed PLS Monument Record  
 To Provide Coordinates for Previously Filed PLS Monument Record without Coordinates  
 To Provide Supplemental Coordinates for a Previously Filed PLS Monument Record

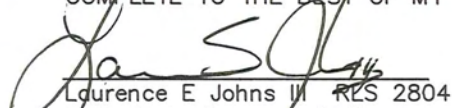
MOST RECENT PLS MONUMENT RECORD DATE:

R.L.S. WHO CREATED MOST RECENT PLS MONUMENT RECORD:

(D) AGENT(S) PERFORMING GPS OBSERVATIONS & COORDINATE COMPUTATION

1) LAURENCE E JOHNS III  
 2) \_\_\_\_\_

I, LAURENCE E JOHNS III RLS 2804, REGISTERED LAND SURVEYOR, HEREBY CERTIFY THAT THE COORDINATES PROVIDED ON THIS RECORD WERE DETERMINED BY ME, OR UNDER MY DIRECTION AND CONTROL AND THAT THIS COORDINATE SUBMISSION FORM IS CORRECT AND COMPLETE TO THE BEST OF MY KNOWLEDGE AND BELIEF.

  
 Laurence E Johns III RLS 2804  
 Eagle Ridge Surveying, LLC  
 PO Box 213  
 Wilton, Wisconsin  
 23 May 2010

