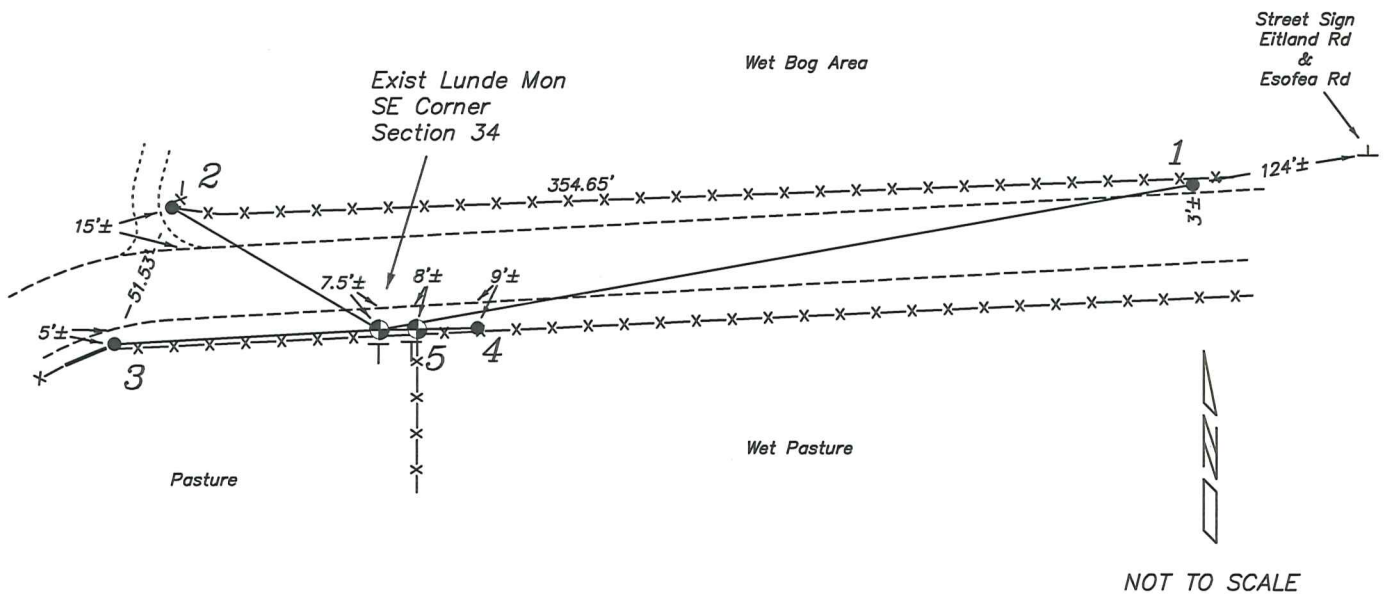


RECORD OF DURABLE WITNESS MONUMENTS

NO	DESCRIPTION	BEARING	DISTANCE
1	Set 3/4" x 18" Iron Rod South Side of a Wood Fence Post	N 79°46'49" E	286.96'
2	Set 3/4" x 18" Iron Rod West Side of Fire Sign E6102A	N 59°25'25" W	83.80'
3	Set 3/4" x 18" Iron Rod North Side of East Gate Post	S 86°57'13" W	92.20'
4	Existing 3/4" Iron Rod Shown on Crook Tie Sheet	(N 88°54'09" E) N 88°54'28" E	(34.14') 34.10'
5	Existing Lunde Monument NE Corner – Section 3	(N 88°54'09" E) N 89°01'59" E	(13.20') 13.12'



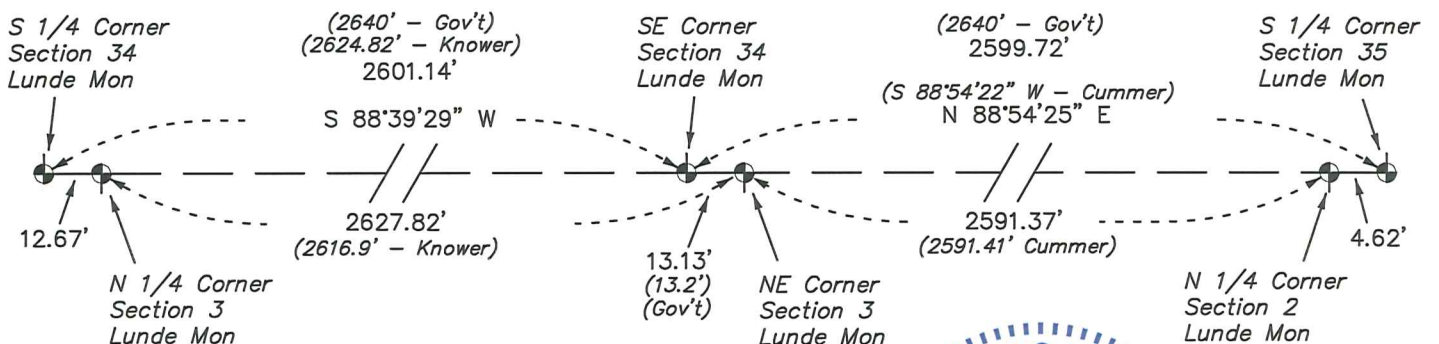
PLAN VIEW DRAWING OF REFERENCE TIES

Map Showing Distance And Direction To Other Public Land Survey Corners Used For Re-Establishing The Corner

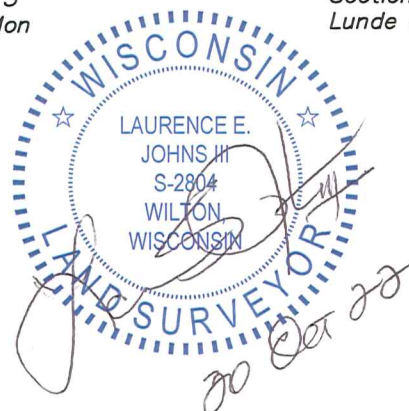
Note:

Measurements were not made to adjoining corners at this time.

Bearings and distances shown are based on recorded information and shown for reference.



I, Laurence E Johns III PLS 2804, Professional Land Surveyor, hereby certify that the corner location shown on this record was determined by me or under my direction and control, and that this U.S. Public Land Survey Monument Record is correct and complete to the best of my knowledge and belief.



VERNON COUNTY CERTIFIED U.S. PUBLIC LAND SURVEY MONUMENT RECORD

INSTRUCTIONS: THIS RECORD SHALL SHOW THE LOCATION OF THE CORNER AND SHALL INCLUDE ALL OF THE FOLLOWING ELEMENTS (A-I)

(A) IDENTIFY THE CORNER BY REFERENCE TO THE U.S. PUBLIC LAND SURVEY SYSTEM

SW Corner Section 35, T14N R5W

☐ = CORNER MONUMENT RESTORED

WITNESSES TO CORNER LOCATION:

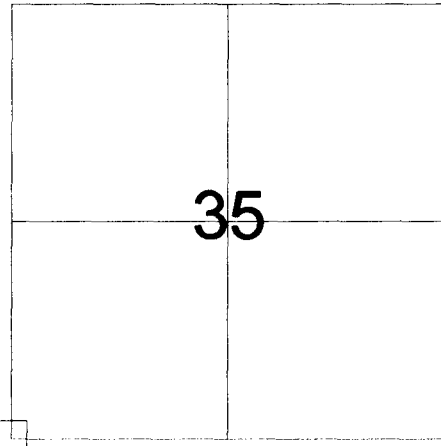
- 1) Curtis Crook
- 2) Chad Crook
- 3) Jim Ledman

STATE PLANE COORDINATES (WISCONSIN SOUTH ZONE)

NORTHING:
EASTING:

VERNON COUNTY COORDINATES

NORTHING: 179115.263
EASTING: 685894.031



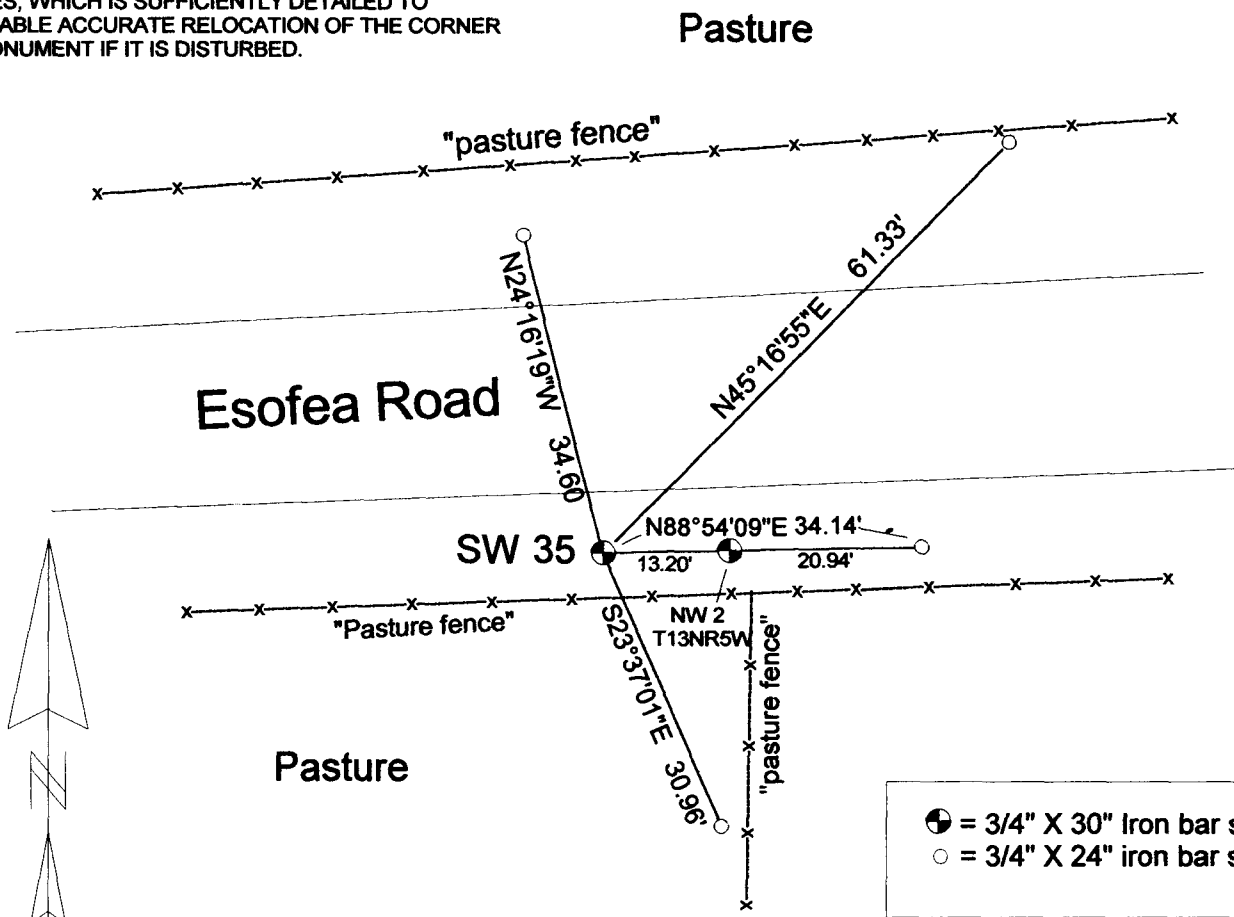
SECTION 35, TOWN 14 NORTH, RANGE 5 WEST

(B) DESCRIBE ANY RECORD EVIDENCE, MONUMENT EVIDENCE, OCCUPATIONAL EVIDENCE, TESTIMONIAL EVIDENCE OR ANY OTHER MATERIAL EVIDENCE YOU CONSIDERED, AND WHETHER THE MONUMENT WAS FOUND OR PLACED.

Placed at original offset distance shown for NW corner of Section 2, T13NR5W and also agrees with measurements along South and West lines of Section.

(C) IN THE PLAN VIEW DRAWING BELOW, PROVIDE REFERENCE TIES TO AT LEAST 4 WITNESS MONUMENTS OR, IF THE LOCATION IS WITHIN A MUNICIPALITY, TO AT LEAST 2 WITNESS MONUMENTS. (WITNESS MONUMENTS SHALL BE MADE OF CONCRETE, NATURAL STONE, IRON, OR OTHER EQUALLY DURABLE MATERIAL.) DESCRIBE WITNESS MONUMENTS.

(D) SHOW A PLAN VIEW DRAWING, DEPICTING THE RELEVANT MONUMENTS AND REFERENCE TIES, WHICH IS SUFFICIENTLY DETAILED TO ENABLE ACCURATE RELOCATION OF THE CORNER MONUMENT IF IT IS DISTURBED.



● = 3/4" X 30" Iron bar set
○ = 3/4" X 24" iron bar set

(E) DESCRIBE ANY MATERIAL DISCREPENCY BETWEEN THE LOCATION OF THE CORNER AS RESTORED OR REESTABLISHED AND THE LOCATION OF THAY CORNER AS PREVIOUSLY RESTORED OR REESTABLISHED BY DISTANCE AND DIRECTION. SHOW THE DISCREPENCY ON THE PLAN VIEW DRAWING UNDER (D), ABOVE. SHOW THE DISTANCES BETWEEN THE CORNER AS PREVIOUSLY RESTORED OR REESTABLISHED AND (1) THE CORNER AS RESTORED OR REESTABLISHED, AND (2) TO AT LEAST 2 OF THE WITNESS MONUMENTS AS SHOWN ON THE DRAWING IN (D), ABOVE.

None Found

(F) WAS THE CORNER RESTORED THROUGH ACCEPTANCE OF (1) AN OBLITERATED EVIDENCE LOCATION, OR (2) A FOUND PERPETUATED LOCATION?

An Obliterated Evidence Location.

(G & H) WAS THE CORNER REESTABLISHED THROUGH LOST CORNER PROPORTIONED METHODS? IF SO SHOW THE METHOD, INCLUDING THE DIRECTION AND DISTANCES TO OTHER PUBLIC LAND SURVEY CORNERS USED AS EVIDENCE OR USED FOR PROPORTIONING IN DETERMINING THE CORNER LOCATION.

Not Applicable

AFFIX LAND SURVEYOR SEAL

(I) I, F. CURTIS CROOK, CERTIFY THAT THE LOCATION SHOWN ON THIS RECORD WAS DETERMINED BY ME OR UNDER MY DIRECTION AND CONTROL AND THAT THIS U.S. PUBLIC LAND SURVEY MONUMENT RECORD IS CORRECT AND COMPLETE TO THE BEST OF MY KNOWLEDGE AND BELIEF.

F. Curtis Crook
SIGNATURE

10-28-02
DATE

