

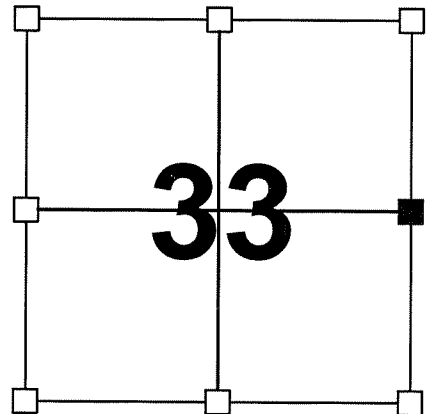
VERNON COUNTY CERTIFIED U.S. PUBLIC LAND SURVEY MONUMENT RECORD

DATUM: NAD 83 (2011)	VERNON COUNTY COORDINATES	
CONTROL: COMBINATION OF GPS AND CONVENTIONAL FIELD CONTROL	NORTH	181,616.65'
	EAST	680,613.58'

*THE EAST QUARTER CORNER OF SECTION 33,
TOWN 14 NORTH, RANGE 5 WEST, TOWN OF
COON, VERNON COUNTY, WISCONSIN.*

(A) IDENTIFY THE CORNER BY REFERENCE
TO THE U.S. PUBLIC LAND SURVEY SYSTEM

■ = CORNER MONUMENT RESTORED



SECTION 33
TOWN 14 NORTH
RANGE 5 WEST

WITNESS TO CORNER LOCATION:

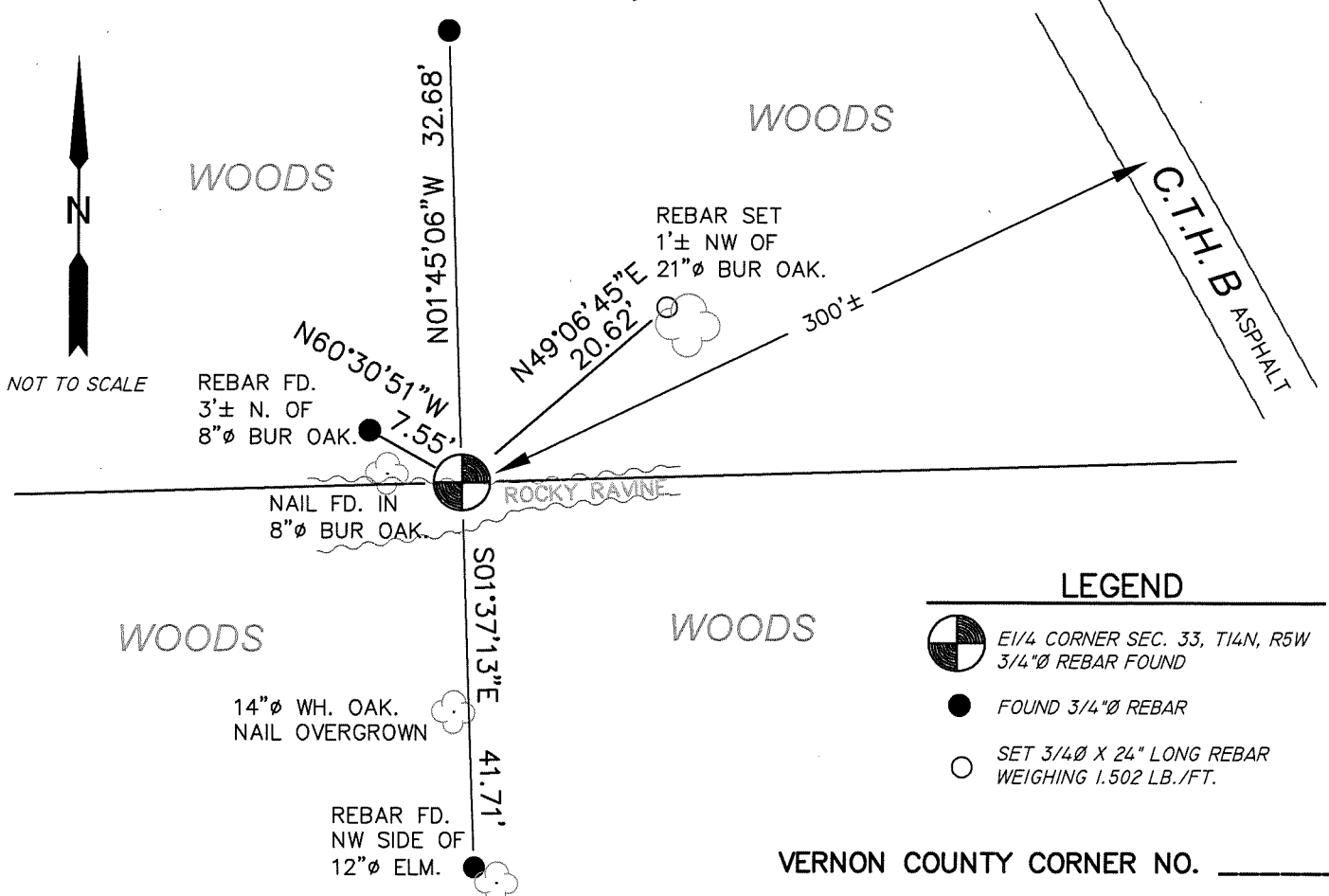
TODD T. RUMMLER

MARK A. MAHONEY

(B) DESCRIBE ANY RECORD EVIDENCE, MONUMENT EVIDENCE, OCCUPATIONAL EVIDENCE,
TESTIMONIAL EVIDENCE OR ANY OTHER MATERIAL EVIDENCE YOU CONSIDERED, AND
WHETHER THE MONUMENT WAS FOUND OR PLACED.

*BRIAN MEYER, S-1712 SET A 3/4" DIAMETER REBAR AT THIS CORNER AND ESTABLISHED
REFERENCE TIES AS SHOWN ON HIS TIE SHEET DATED APRIL 27, 1987. I FOUND THE
REBAR SET BY MR. MEYER ON THE NORTHERLY SIDE OF A ROCKY RAVINE AND
ACCEPTED IT AS THE CORNER. I FOUND THREE OTHER 3/4" DIAMETER REBARS NEARBY
AND COMPLETED MEASUREMENTS TO THEM SO THAT I COULD USE THEM AS
REFERENCE TIES TO THE CORNER. I ALSO SET ONE ADDITIONAL 3/4" DIAMETER REBAR
FOR THE FOURTH REQUIRED REFERENCE TIE NEEDED TO PERPETUATE THE CORNER
LOCATION.*

(C) IN THE PLAN VIEW DRAWING BELOW, PROVIDE REFERENCE TIES TO AT LEAST 4 WITNESS
MONUMENTS OR, IF THE LOCATION IS WITHIN A MUNICIPALITY, TO AT LEAST 2 WITNESS
MONUMENTS. (WITNESS MONUMENTS SHALL BE MADE ON CONCRETE, NATURAL STONE, IRON,
OR OTHER EQUALLY DURABLE MATERIAL.) DESCRIBE WITNESS MONUMENTS.



VERNON COUNTY CORNER NO. _____

(D) DESCRIBE ANY MATERIAL DISCREPANCY BETWEEN THE LOCATION OF THE CORNER AS RESTORED OR REESTABLISHED AND THE LOCATION OF THAT CORNER AS PREVIOUSLY RESTORED OR REESTABLISHED BY DISTANCE AND DIRECTION. SHOW THE DISCREPANCY ON THE PLAN VIEW DRAWING UNDER (C), ABOVE. SHOW THE DISTANCES BETWEEN THE CORNER AS PREVIOUSLY RESTORED OR REESTABLISHED AND (1) THE CORNER AS RESTORED OR REESTABLISHED, AND (2) TO AT LEAST 2 OF THE WITNESS MONUMENTS AS SHOWN ON THE DRAWING IN (C), ABOVE.

NONE

(E) WAS THE CORNER RESTORED THROUGH ACCEPTANCE OF (1) AN OBLITERATED EVIDENCE LOCATION, OR (2) A FOUND PERPETUATED LOCATION?

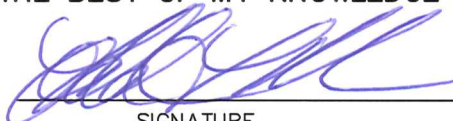
2.) A FOUND PERPETUATED LOCATION

(F & G) WAS THE CORNER REESTABLISHED THROUGH LOST CORNER PROPORTIONATE METHODS? IF SO SHOW THE METHOD, INCLUDING THE DIRECTION AND DISTANCED TO OTHER PUBLIC LAND SURVEY CORNERS USED AS EVIDENCE OR USED FOR PROPORTIONING IN DETERMINING THE CORNER LOCATION.

NO.

AFFIX LAND SURVEYOR SEAL

(H) I, TODD T. RUMMLER, RLS-2443 CERTIFY THAT THE CORNER LOCATION SHOWN ON THIS RECORD WAS DETERMINED BY ME OR UNDER MY DIRECTION AND CONTROL AND THAT THIS U.S. PUBLIC LAND SURVEY MONUMENT RECORD IS CORRECT AND COMPLETE TO THE BEST OF MY KNOWLEDGE AND BELIEF.



SIGNATURE

7/16/2021

DATE



CERTIFICATE

I, Bryan H. Meyer, do hereby certify that on the 20th day of April 19 87 I found ~~evidence~~ (no evidence) of the East 1/4 corner of Section 33, T 14 N, R 5 W Fourth Principal Meridian, and I re-established said corner according to the Wisconsin Statutes as shown and described hereon.

Dated this 21st day of April 19 87.

Bryan H. Meyer
Registered Land Surveyor
Title

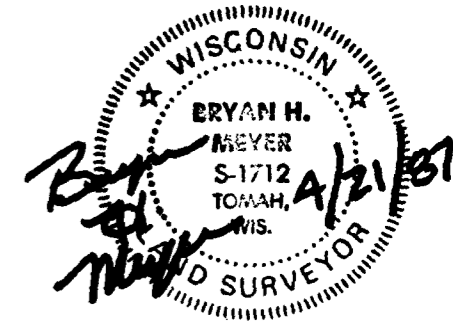
CERTIFIED LAND SURVEY

History of corner establishment since Original Government Survey

W. H. Knower was here in September of 1885. C. M. Sterling was here in September of 1892 and set a sandstone.

Description of corner evidence found:

I could not find Mr. Sterling's stone. My corner location falls near a large gully. It is possible that Sterling's stone may have been washed out. The fences in this area are extremely "wild". I re-established this corner on line and equi-distant between the Northeast and Southeast corners of Section 33 as per law.



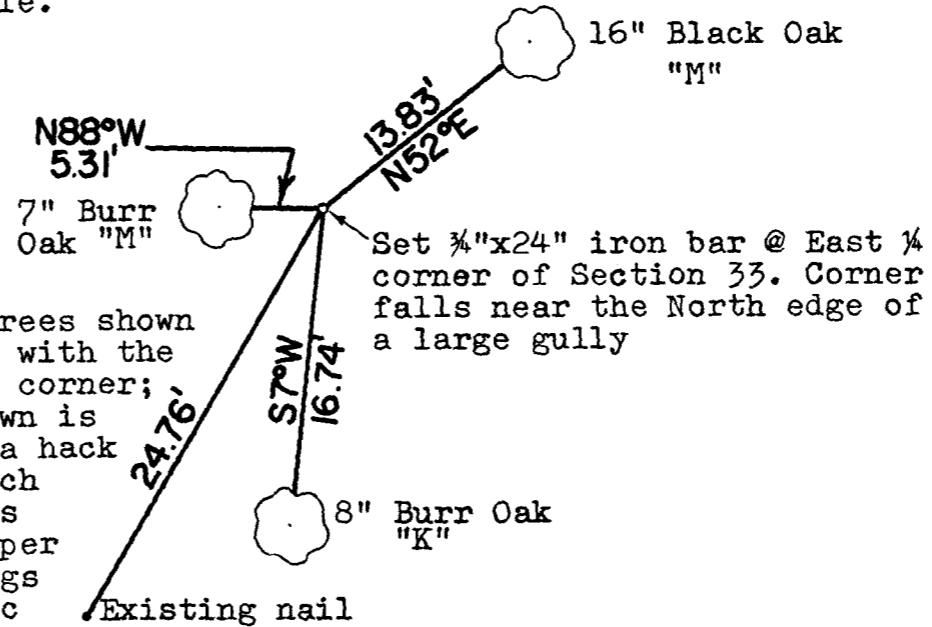
COUNTY SURVEYOR FORM NO. 1

Description of corner and witness monuments, references and accessories used to perpetuate the original or re-established location of this corner:

Crew: Meyer, Kenworthy
Date: April 20, 1987-5:00 p.m.
Weather: Humid, Breezy, 90°±.
Witnesses to corner location:

Bryan H. Meyer
John Kenworthy

No Scale.



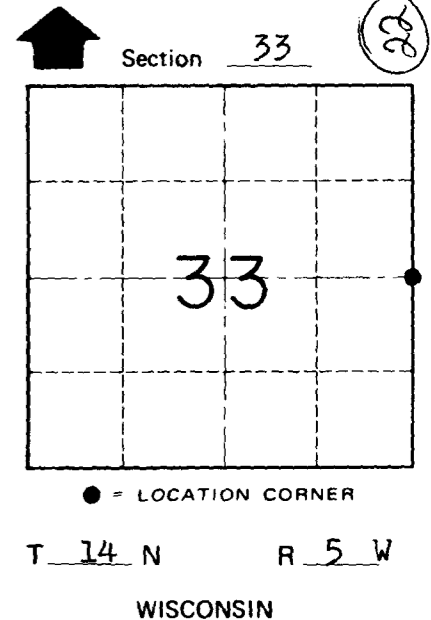
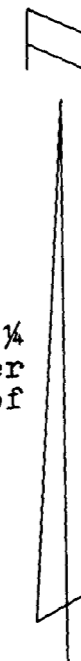
Note: The three trees shown are double blazed with the blazes facing the corner; each distance shown is to a nail set in a hack in the side of each tree; each tree is scribed in the upper blaze. The bearings shown are magnetic hand compass bearings.

WISCONSIN COORDINATE SYSTEM

SURVEY CONTROL ORDER

Horizontal	_____
Vertical	_____

Corner	East (X)	North (Y)	Elevation (Z)	Zone
Control Sta. Name				



~~City/Village~~ Town of Coon

County of Vernon