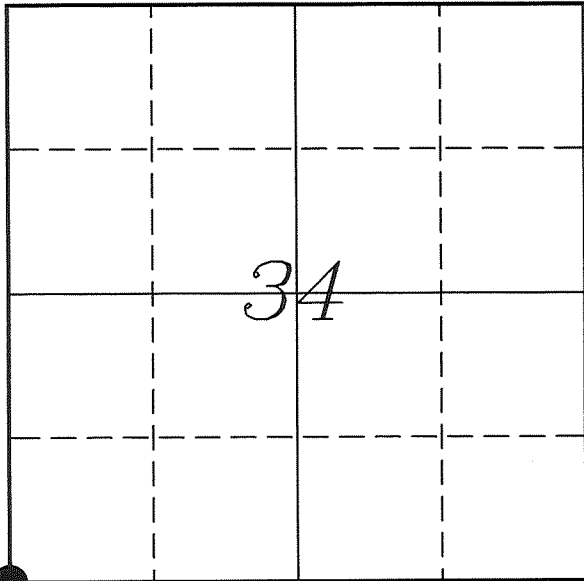


---

# U. S. PUBLIC LAND SURVEY MONUMENT RECORD

---

## SECTION 34, T14N, R5W, TOWN OF COON VERNON COUNTY, WISCONSIN



LOCATION OF LANDMARK

Crew: Laurence E Johns III  
Larry Handschy

Date: 3 May 2010

VERNON COUNTY COORDINATE SYSTEM	
Northing	178976.364
Easting	680683.907
Datum	NAD 1983 (2007)
Elevation	
Datum	
TYPE OF LANDMARK:	
Set Lunde Monument	
BEARINGS ARE REFERENCED TO:	
Vernon County Coordinates	

---

*Describe any record evidence, monument evidence, testimonial evidence or any other material evidence you considered and whether the monument was found or restored through acceptance of an obliterated evidence location.*

No bearing trees of record were located.

Found the 3/4" Pinched Iron Pipe set by Jung and tied by Meyer.

Distances match very well with Kowner's distances to the North and West.

Since the Iron Pipe was set at occupation and that location matches Kowner's survey very well. I accepted it as the best available evidence of the original government corner and replaced it with a Lunde Monument.

---

*Describe or show any material discrepancy between the location of the restored corner and that of the corner previously restored or re-established.*

J E Whitcher established this corner in November 1844.

Wm Kowner was at this corner, in September 1885, during a survey in Section 34. He does not show whether he found the government corner or re-established the corner.

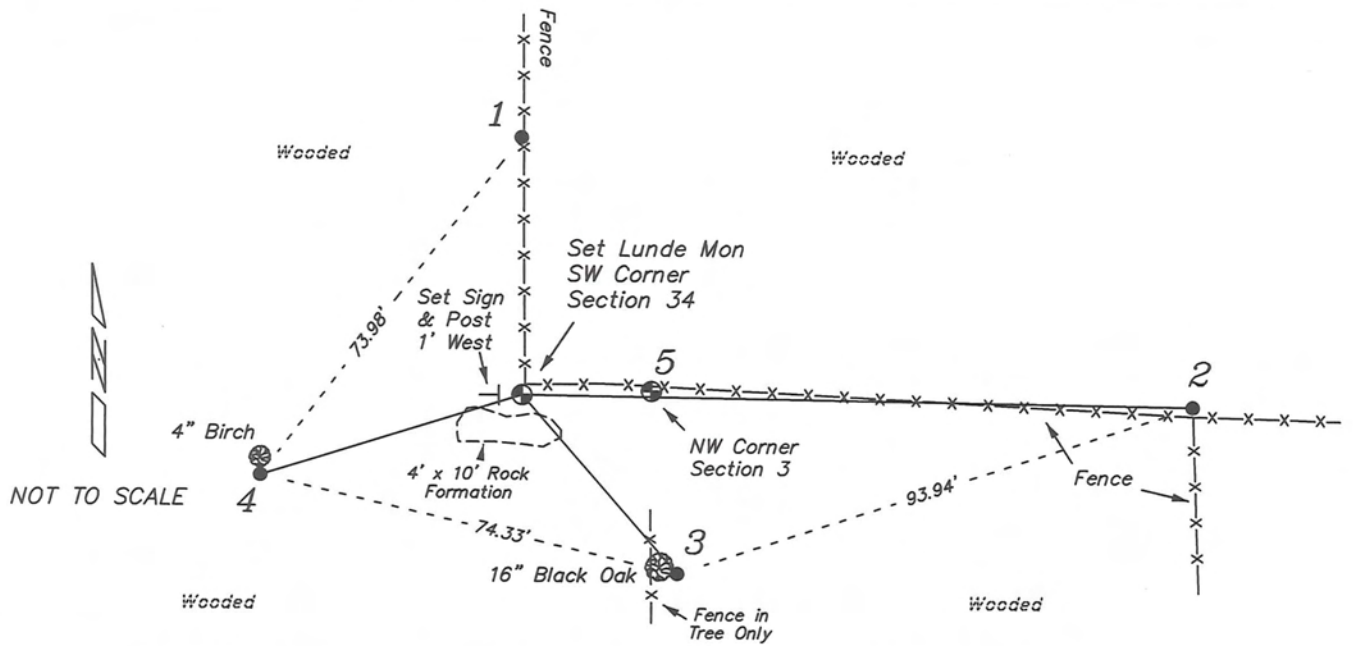
C M Sterling was at this corner, in September 1892, during a survey in Section 33. He shows this corner as being renewed by Kowner.

Bill Jung was at this corner, in October 1979, during a survey in Section 3. He set a 3/4" Iron Pipe at this corner.

Brian Meyer was at this corner, in April 1987, during a survey in Section 33. He finds Jung's Iron Pipe and prepares a tie sheet for it.

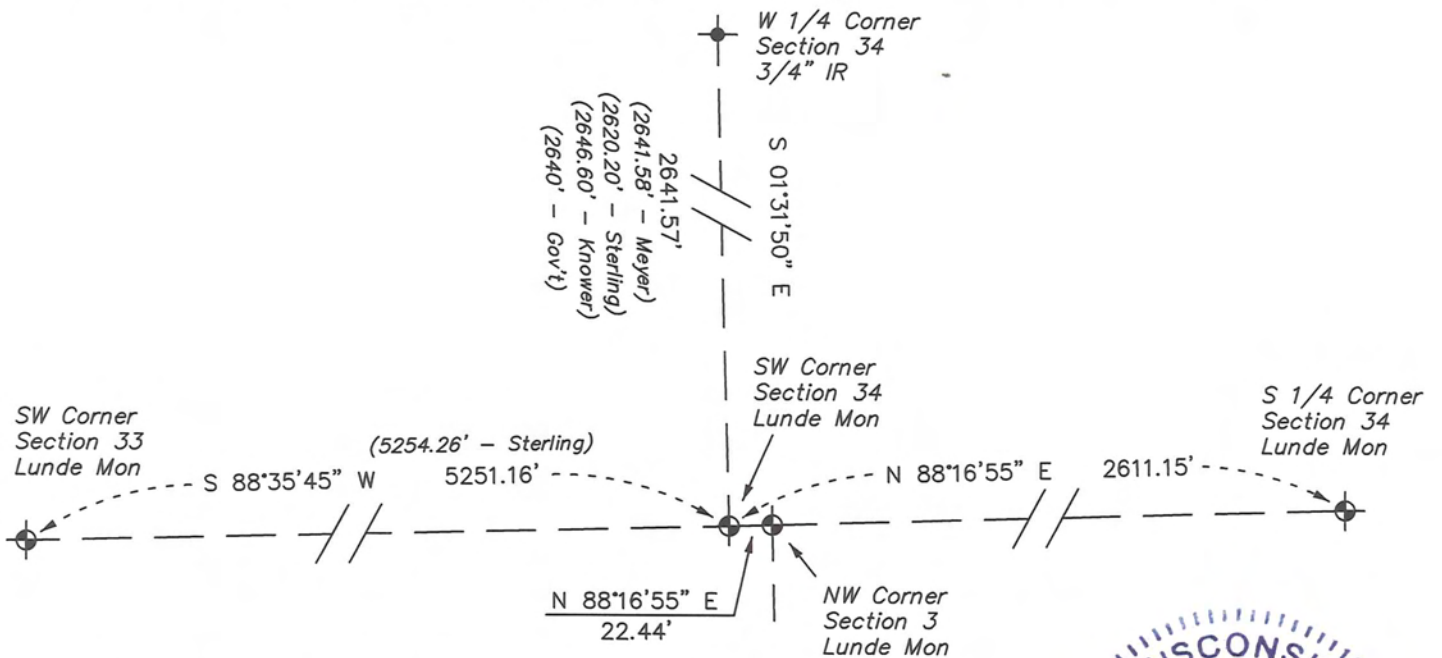
# RECORD OF DURABLE WITNESS MONUMENTS

NO	DESCRIPTION	BEARING	DISTANCE
1	Set 3/4" x 18" Iron Rod In Fence Line	N 00°15'09" W	44.56'
2	Set 3/4" x 18" Iron Rod North Side of 3-way Fence Corner	S 89°10'27" E	116.26'
3	Set 3/4" x 18" Iron Rod Southeast Side of 16" Black Oak	S 41°02'50" E	41.11'
4	Set 3/4" x 18" Iron Rod South Side of a 4" Birch	S 72°49'19" W	47.49'
5	Lunde Monument NW Corner - Section 3	N 88°16'55" E	22.44'

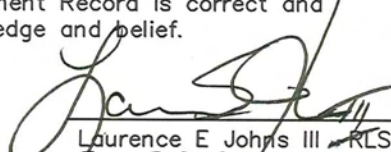


## PLAN VIEW DRAWING OF REFERENCE TIES

Map Showing Distance And Direction To Other Public Land Survey  
Corners Used For Re-Establishing The Corner



I, Laurence E Johns III RLS 2804, Registered Land Surveyor, hereby certify that the corner location shown on this record was determined by me or under my direction and control, and that this U.S. Public Land Survey Monument Record is correct and complete to the best of my knowledge and belief.

  
 Laurence E Johns III RLS 2804  
 Eagle Ridge Surveying, LLC  
 PO Box 213  
 Wilton, Wisconsin  
 3 May 2010

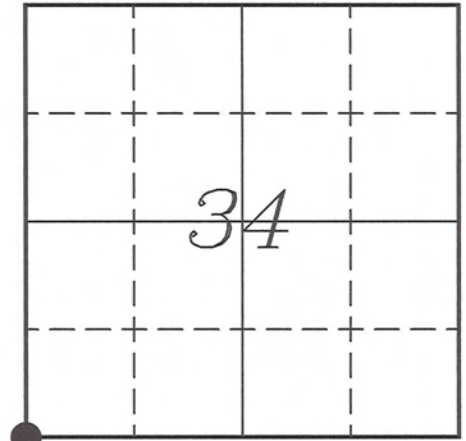


**VERNON COUNTY COORDINATE SUBMISSION FORM**  
**"As An Addendum To"**  
**VERNON COUNTY**  
**CERTIFIED U.S. PUBLIC LAND SURVEY MONUMENT RECORD**

INSTRUCTIONS: THIS RECORD FORM SHOULD BE USED WHEN COORDINATES ARE PROVIDED FOR A PUBLIC LAND SURVEY CORNER AND SHALL INCLUDE ALL OF THE FOLLOWING ELEMENTS (A-D)

(A) IDENTIFY THE CORNER BY REFERENCE TO THE U.S. PUBLIC LAND SURVEY SYSTEM IN DIAGRAM AT RIGHT

● = CORNER MONUMENT



(B) COORDINATES:

GEOGRAPHIC (Degrees Minutes Seconds)

LATITUDE: 43° 38' 17.0264" N

LONGITUDE: 90° 58' 10.5915" W

ELLIPSOID HT (m): \_\_\_\_\_

DATUM: NAD 1983 (2007)

GEOID03 ADJ: -32.478

ORTHOMETRIC HT: \_\_\_\_\_

VERNON COUNTY (U.S. FEET)

Coord Quality (+/-)

NORTHING (Y): 178976.364 \_\_\_\_\_

EASTING (X): 680683.907 \_\_\_\_\_

GPS METHOD USED TO COMPUTE COORDINATES (check as applicable)

RTK Observations     Static Baselines     OPUS-RS Solution     OPUS-S Solution  
 Combination of GPS Observations & Conventional Procedures

Was a Least Squares Adjustment Used to Compute Coordinates? Yes /  No

BASE CONTROL USED FOR COORDINATE COMPUTATION

Station Name	Station Coordinates	Date/Time
<u>OPUS Control - CN34</u>	<u>43° 38' 51.5548" N 90° 57' 40.3727" W</u> <u>N - 182467.812 E - 682913.711</u>	<u>05/03/2010 - 11:03</u>
<u>Same</u>	_____	<u>05/06/2010 - 14:12</u>

(C) REASON FOR COORDINATES SUBMITTAL (check one)

- Being Filed With a New U.S. PLS Monument Record  
 To Correct the Coordinates Listed on a Previously Filed PLS Monument Record  
 To Provide Coordinates for Previously Filed PLS Monument Record without Coordinates  
 To Provide Supplemental Coordinates for a Previously Filed PLS Monument Record

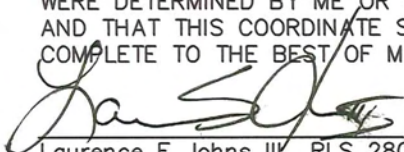
MOST RECENT PLS MONUMENT RECORD DATE:

R.L.S. WHO CREATED MOST RECENT PLS MONUMENT RECORD:

(D) AGENT(S) PERFORMING GPS OBSERVATIONS & COORDINATE COMPUTATION

- 1) LAURENCE E JOHNS III  
 2) \_\_\_\_\_

I, LAURENCE E JOHNS III RLS 2804, REGISTERED LAND SURVEYOR, HEREBY CERTIFY THAT THE COORDINATES PROVIDED ON THIS RECORD WERE DETERMINED BY ME OR UNDER MY DIRECTION AND CONTROL AND THAT THIS COORDINATE SUBMISSION FORM IS CORRECT AND COMPLETE TO THE BEST OF MY KNOWLEDGE AND BELIEF.

  
 Laurence E Johns III RLS 2804  
 Eagle Ridge Surveying, LLC  
 PO Box 213  
 Wilton, Wisconsin  
 3 May 2010



CERTIFICATE

CERTIFIED LAND CORNER

No. \_\_\_\_\_

MAY 14 1990

I, Bryan H. Meyer, do hereby certify that on the 20<sup>th</sup> day of April 1987, I found (evidence) ~~\_\_\_\_\_~~ of the Southeast corner of Section 33, T 14 N, R 5 W Fourth Principal Meridian, and I re-established said corner according to the Wisconsin Statutes as shown and described hereon.

Dated this 21st day of April 1987.

Bryan H. Meyer

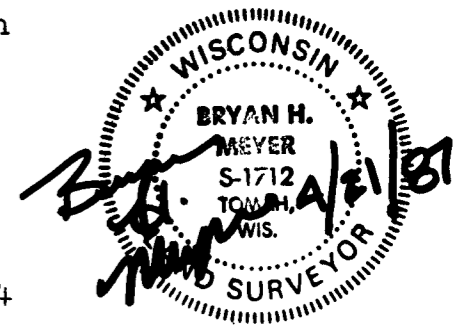
Registered Land Surveyor  
Title

History of corner establishment since Original Government Survey

It should first of all be noted that the Original Government Surveyors established closing corners on this Town Line. This Town Line is not however a correction line. W. H. Knower was here in September of 1885. C. M. Sterling was here in September of 1892. W. C. Jung was here in October of 1979 and set a 3/4" iron pipe, 22.44 feet West of the Northwest corner of Section 3, T13N, R5W.

Description of corner evidence found:

I found and accepted Mr. Jung's 3/4" pinched iron pipe as the corner as it fits the occupied fence corner. The distance of 22.44 from the Northwest corner of Section 3 fits the distance shown on the Original Government plat sheet.

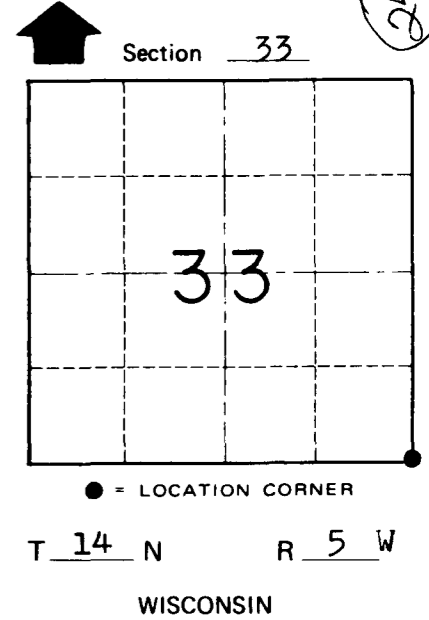
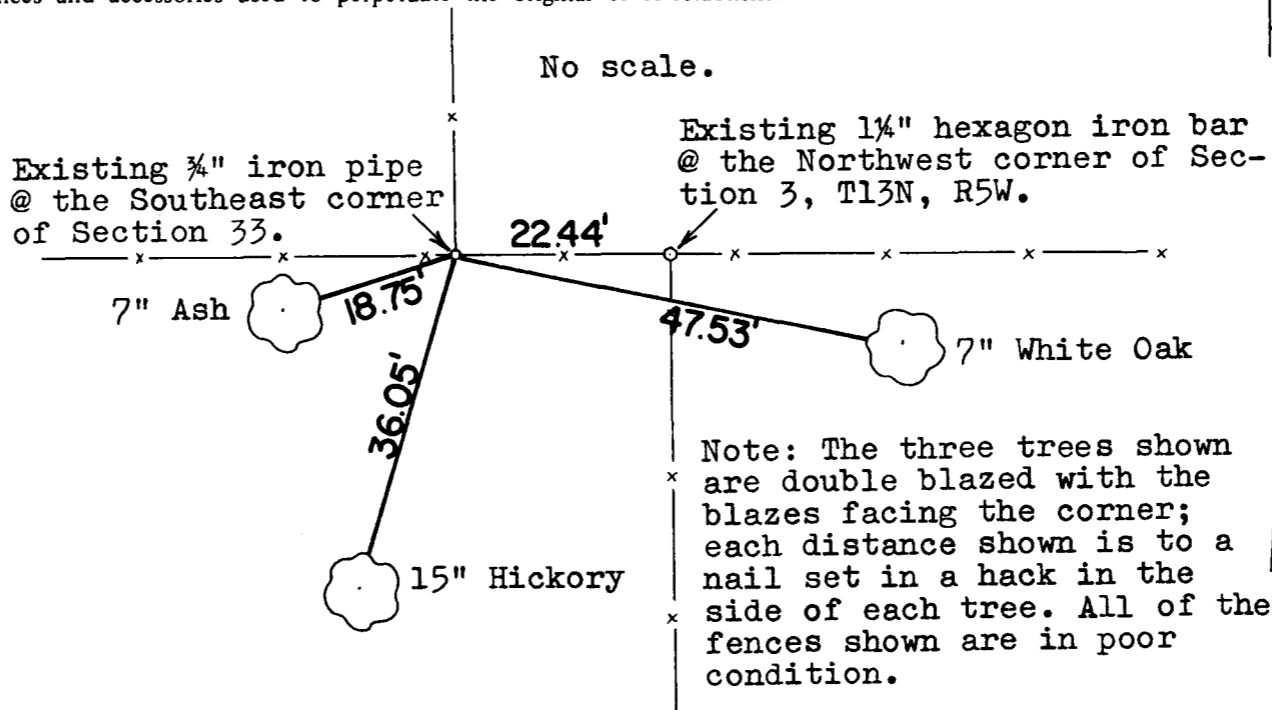


Description of corner and witness monuments, references and accessories used to perpetuate the original or re-established location of this corner:

Crew: Meyer, Kenworthy  
Date: April 20, 1987-4:00 P. M.  
Weather: Humid, Breezy, 90°±.  
Witnesses to corner location:

Bryan H. Meyer

John Kenworthy



Note: The three trees shown are double blazed with the blazes facing the corner; each distance shown is to a nail set in a hack in the side of each tree. All of the fences shown are in poor condition.

COUNTY SURVEYOR FORM NO. 1

SURVEY CONTROL ORDER

Horizontal \_\_\_\_\_  
Vertical \_\_\_\_\_

WISCONSIN COORDINATE SYSTEM

Corner	East (X)	North (Y)	Elevation (Z)	Zone
Control Sta. Name				

~~\_\_\_\_\_~~ Town of Coon

County of Vernon