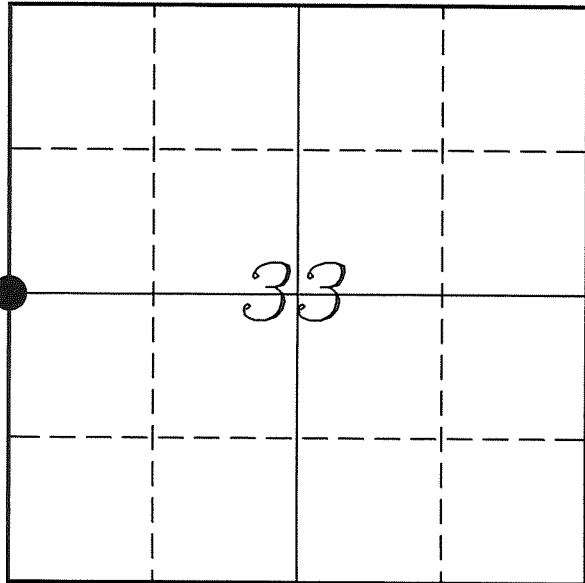


U. S. PUBLIC LAND SURVEY MONUMENT RECORD

SECTION 33, T14N, R5W, TOWN OF COON VERNON COUNTY, WISCONSIN



LOCATION OF LANDMARK

Crew: Laurence E Johns III
Larry Handschy

Date: 26 April 2010

VERNON COUNTY COORDINATE SYSTEM	
Northing	181495.629
Easting	675355.256
Datum	NAD 1983 (2007)
Elevation	
Datum	
TYPE OF LANDMARK:	
Set 1 1/4" x 18" Iron Rod	
BEARINGS ARE REFERENCED TO:	
Vernon County Coordinates	

Describe any record evidence, monument evidence, testimonial evidence or any other material evidence you considered and whether the monument was found or restored through acceptance of an obliterated evidence location.

No Bearing Trees of record were located.

It appears that the headwall called for on Crook's & Fechner's survey are Grade Stabilizing Structures built by the CCC during the mid 1930's. There are several of these structures and this corner lands near the 2nd structure from the South.

I could not find the chiseled cross as called for in Crook's and Fechner's survey.

Fechner had set the '40' corners to the East and South of this location.

I re-created this corner by intersecting the lines between the Center of Section & the '40' Corner East of this corner and the SW Corner & '40' Corner South of this corner.

I inspected this location and the most I could find was a chip in the corner of the concrete on the structure. but the location falls on the fence line and in between the headwall and a wooden fence post next to the headwall.

I drilled a hole in between the Headwall and Fence Post and placed a 1 1/4" Iron Rod at the intersection of the two lines.

Since this location fits well with Knowler's survey and with Crook's & Fechner's, I accepted it as the best available evidence of the original corner.

Describe or show any material discrepancy between the location of the restored corner and that of the corner previously restored or re-established.

Alfred Brown established this corner in October 1845.

Wm Knowler was at this corner, in January 1889, during a survey in Section 32. He found the government corner.

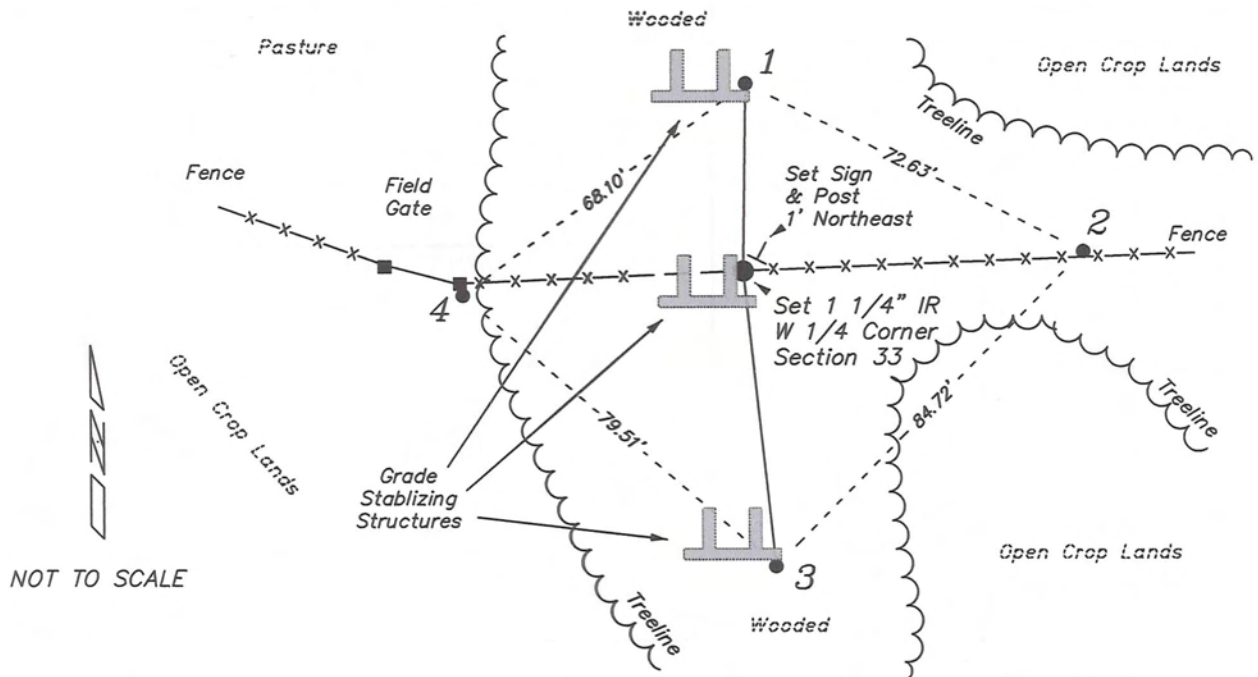
C M Sterling was at this corner, in September 1892, during a survey in Section 33. He mentions tying off a bearing tree at this corner.

F Curtis Crook was at this corner, in April 2000, during a survey in Section 33. He shows a Cross Chiseled in Concrete Headwall.

Chris Fechner was at this corner, in May 2001, during a survey in Section 33. He also shows the same Chiseled Cross.

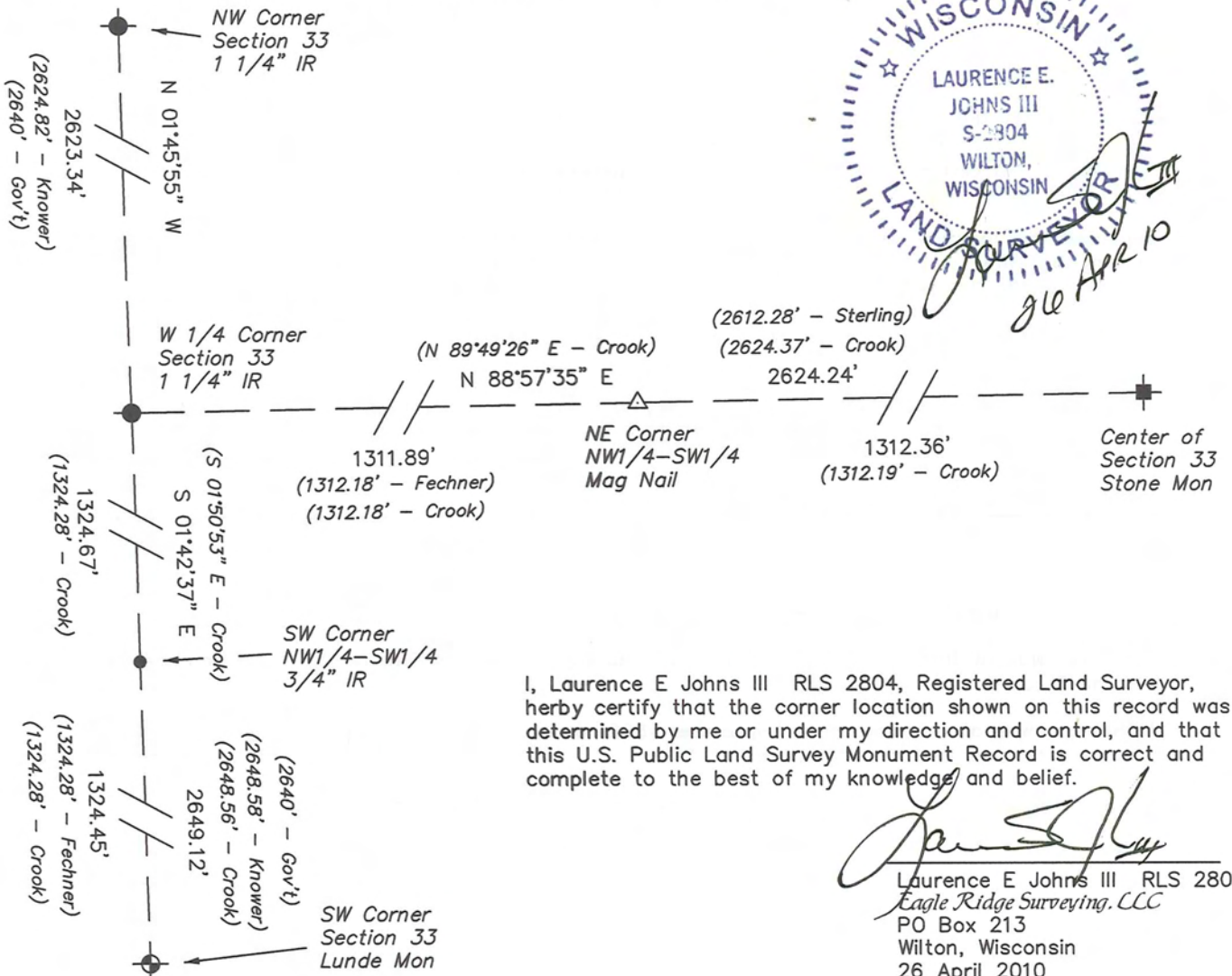
RECORD OF DURABLE WITNESS MONUMENTS

NO	DESCRIPTION	BEARING	DISTANCE
1	Set 3/4" x 18" Iron Rod North Side of Southeast Headwall	N 00°41'51" E	36.16'
2	Set 3/4" x 18" Iron Rod In Fence Line	N 86°44'02" E	65.53'
3	Set 3/4" x 18" Iron Rod South Side of Southeast Headwall	S 06°07'20" E	57.05'
4	Set 3/4" x 18" Iron Rod East Brace Post of Field Gate	S 85°01'33" W	54.24'



PLAN VIEW DRAWING OF REFERENCE TIES

Map Showing Distance And Direction To Other Public Land Survey Corners Used For Re-Establishing The Corner



I, Laurence E Johns III RLS 2804, Registered Land Surveyor, hereby certify that the corner location shown on this record was determined by me or under my direction and control, and that this U.S. Public Land Survey Monument Record is correct and complete to the best of my knowledge and belief.

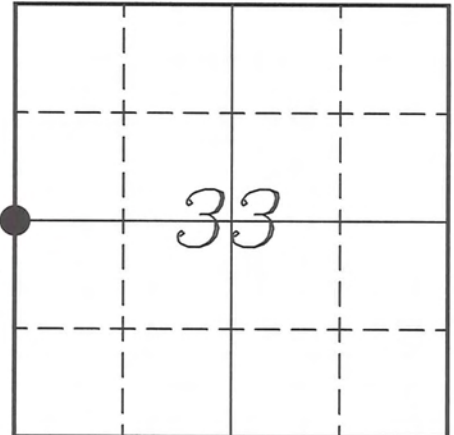
Laurence E Johns III RLS 2804
 Eagle Ridge Surveying, LLC
 PO Box 213
 Wilton, Wisconsin
 26 April 2010

VERNON COUNTY COORDINATE SUBMISSION FORM
 "As An Addendum To"
VERNON COUNTY
CERTIFIED U.S. PUBLIC LAND SURVEY MONUMENT RECORD

INSTRUCTIONS: THIS RECORD FORM SHOULD BE USED WHEN COORDINATES ARE PROVIDED FOR A PUBLIC LAND SURVEY CORNER AND SHALL INCLUDE ALL OF THE FOLLOWING ELEMENTS (A-D)

(A) IDENTIFY THE CORNER BY REFERENCE TO THE U.S. PUBLIC LAND SURVEY SYSTEM IN DIAGRAM AT RIGHT

● = CORNER MONUMENT



T 14 N, R 5 W

(B) COORDINATES:

GEOGRAPHIC (Degrees Minutes Seconds)

LATITUDE: 43° 38' 41.7844" N

LONGITUDE: 90° 59' 23.1343" W

ELLIPSOID HT (m): _____

DATUM: NAD 1983 (2007)

GEOID03 ADJ: -32.402

ORTHOMETRIC HT: _____

VERNON COUNTY (U.S. FEET)

Coord Quality (+/-)

NORTHING (Y): 181495.629

EASTING (X): 675355.256

GPS METHOD USED TO COMPUTE COORDINATES (check as applicable)

- RTK Observations Static Baselines OPUS-RS Solution OPUS-S Solution
 Combination of GPS Observations & Conventional Procedures

Was a Least Squares Adjustment Used to Compute Coordinates? Yes / No

BASE CONTROL USED FOR COORDINATE COMPUTATION

Station Name	Station Coordinates	Date/Time
<u>OPUS Control - CN32</u>	<u>43° 38' 27.6640" N 90° 59' 58.3490" W</u>	<u>04/23/2010 - 14:58</u>
	<u>N - 180072.708 E - 672762.114</u>	
<u>Same</u>		<u>04/26/2010 - 17:28</u>

(C) REASON FOR COORDINATES SUBMITTAL (check one)

- Being Filed With a New U.S. PLS Monument Record
 To Correct the Coordinates Listed on a Previously Filed PLS Monument Record
 To Provide Coordinates for Previously Filed PLS Monument Record without Coordinates
 To Provide Supplemental Coordinates for a Previously Filed PLS Monument Record

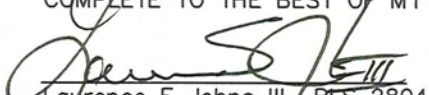
MOST RECENT PLS MONUMENT RECORD DATE:

R.L.S. WHO CREATED MOST RECENT PLS MONUMENT RECORD:

(D) AGENT(S) PERFORMING GPS OBSERVATIONS & COORDINATE COMPUTATION

- 1) LAURENCE E JOHNS III
 2) _____

I, LAURENCE E JOHNS III RLS 2804, REGISTERED LAND SURVEYOR, HEREBY CERTIFY THAT THE COORDINATES PROVIDED ON THIS RECORD WERE DETERMINED BY ME OR UNDER MY DIRECTION AND CONTROL AND THAT THIS COORDINATE SUBMISSION FORM IS CORRECT AND COMPLETE TO THE BEST OF MY KNOWLEDGE AND BELIEF.


 Laurence E Johns III RLS 2804
 Eagle Ridge Surveying, LLC
 PO Box 213
 Wilton, Wisconsin
 26 April 2010

