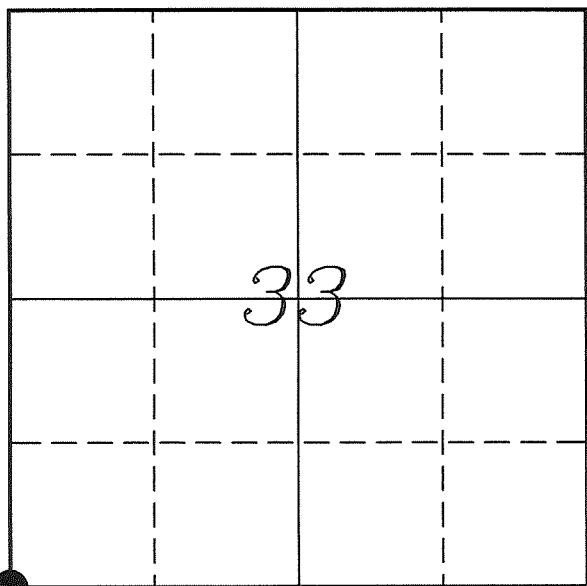

U. S. PUBLIC LAND SURVEY MONUMENT RECORD

SECTION 33, T14N, R5W, TOWN OF COON VERNON COUNTY, WISCONSIN



LOCATION OF LANDMARK

Crew: Laurence E Johns III
Larry Handschy

Date: 26 April 2010

VERNON COUNTY COORDINATE SYSTEM	
Northing	178847.689
Easting	675434.325
Datum	NAD 1983 (2007)
Elevation	
Datum	
TYPE OF LANDMARK:	
Set Lunde Monument	
BEARINGS ARE REFERENCED TO:	
Vernon County Coordinates	

Describe any record evidence, monument evidence, testimonial evidence or any other material evidence you considered and whether the monument was found or restored through acceptance of an obliterated evidence location.

No bearing trees of record were located.

Could not locate the Lime Stone as called from by Sterling. The area is full of stones and he did not indicate size or marking on his stone.

Found the 1 1/2" Iron Pipe as called for by Crook. No known record of the origin of this pipe. It does fit occupation well.

Since the Iron Pipe had been used in previous surveys, fits occupation-well and there is no other apparent evidence I accepted it as the best available evidence of the original government corner and replaced it with a Lunde Monument.

Describe or show any material discrepancy between the location of the restored corner and that of the corner previously restored or re-established.

J E Whitcher established this corner in November 1844.

Wm Knower was at this corner, in January 1889, during a survey in Section 32. He found the government corner.

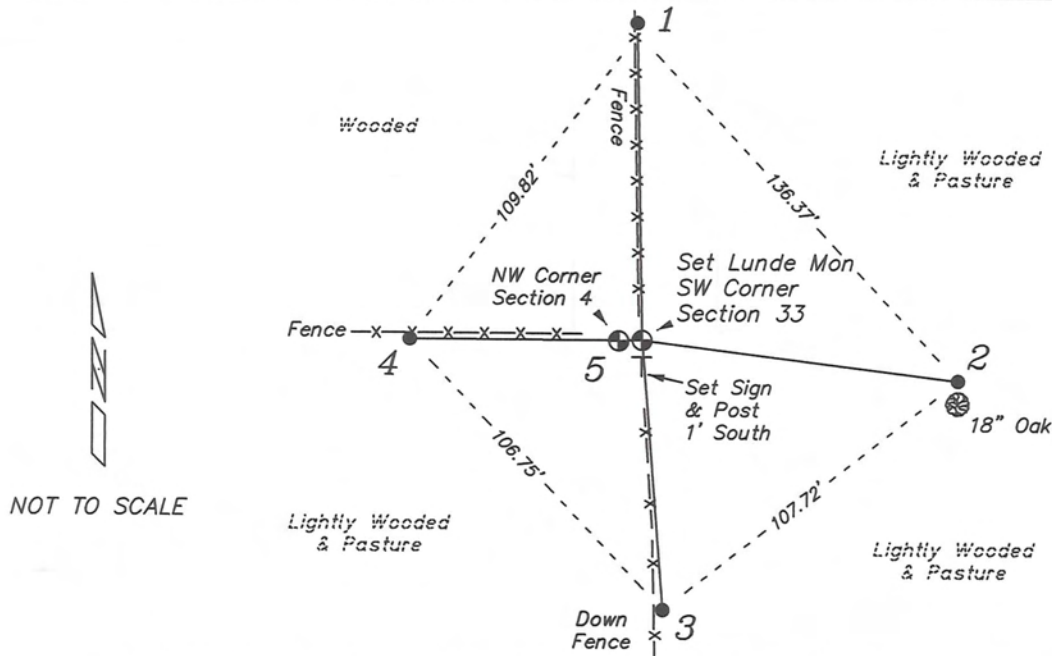
C M Sterling was at this corner, in September 1892, during a survey in Section 33. He states there is a Lime Stone at the corner. Does mention that he set it or found it.

F Curtis Crook was at this corner, in April 2000, during a survey in Section 33. He found a 1 1/2" Iron Pipe.

Chris Fechner was at this corner, in May 2001, during a survey in Sections 32 & 33. He also found the 1 1/2" Iron Pipe.

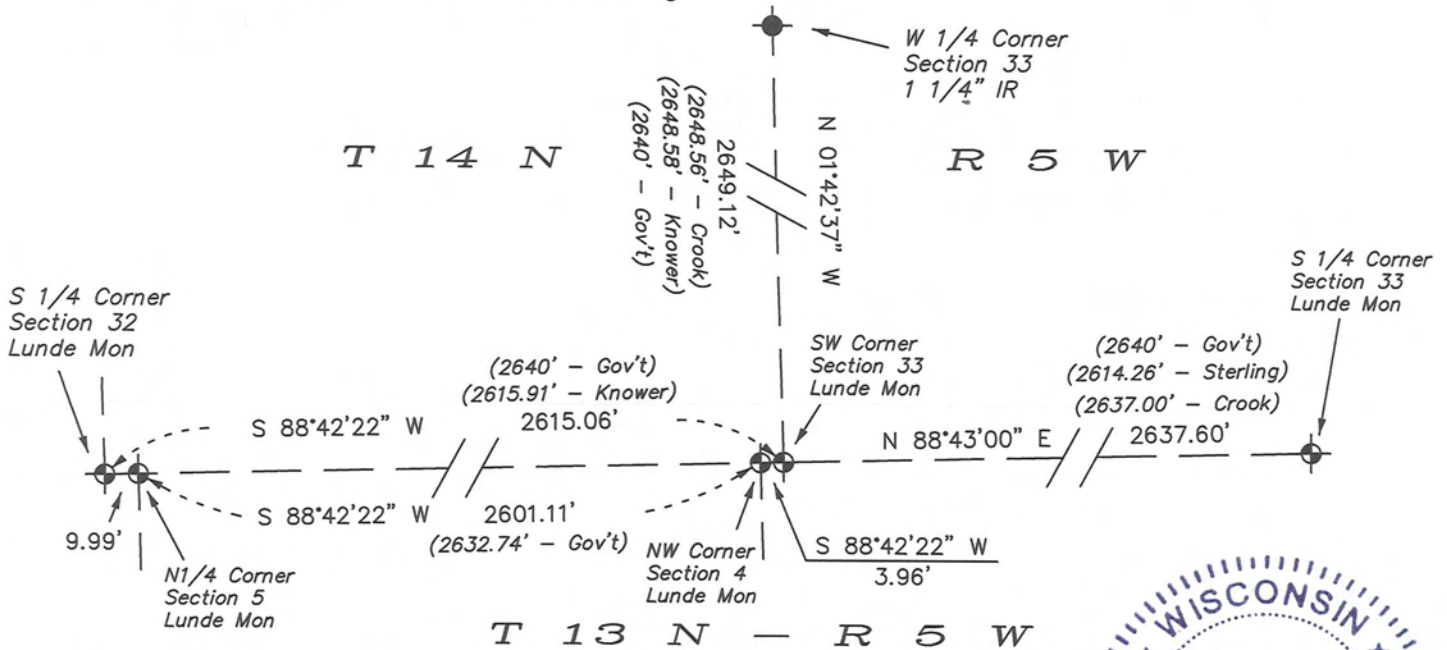
RECORD OF DURABLE WITNESS MONUMENTS

NO	DESCRIPTION	BEARING	DISTANCE
1	Set 3/4" x 18" Iron Rod In Fence Line	N 01°03'14" W	88.61'
2	Set 3/4" x 18" Iron Rod 2' North of a 18" Oak	S 82°51'09" E	91.79'
3	Set 3/4" x 18" Iron Rod Next to Old Metal Fence Post	S 04°31'11" E	77.92'
4	Set 3/4" x 18" Iron Rod In Fence Line	N 89°47'53" W	66.84'
5	Lunde Monument N 1/4 Corner - Section 4	S 88°42'22" W	3.96'

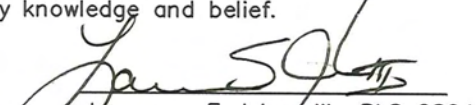


PLAN VIEW DRAWING OF REFERENCE TIES

Map Showing Distance And Direction To Other Public Land Survey
Corners Used For Re-Establishing The Corner



I, Laurence E Johns III RLS 2804, Registered Land Surveyor, hereby certify that the corner location shown on this record was determined by me or under my direction and control, and that this U.S. Public Land Survey Monument Record is correct and complete to the best of my knowledge and belief.


 Laurence E Johns III RLS 2804
 Eagle Ridge Surveying, LLC
 PO Box 213
 Wilton, Wisconsin
 26 April 2010
 Revised
 23 May 2010

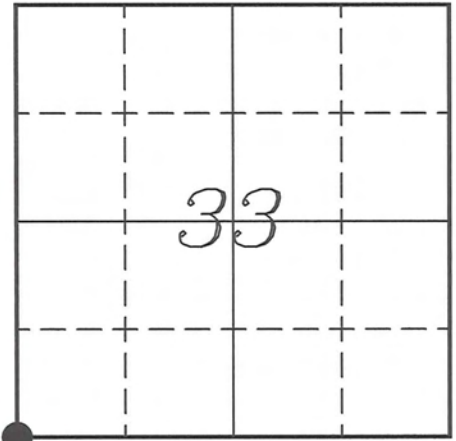


VERNON COUNTY COORDINATE SUBMISSION FORM
 "As An Addendum To"
VERNON COUNTY
CERTIFIED U.S. PUBLIC LAND SURVEY MONUMENT RECORD

INSTRUCTIONS: THIS RECORD FORM SHOULD BE USED WHEN COORDINATES ARE PROVIDED FOR A PUBLIC LAND SURVEY CORNER AND SHALL INCLUDE ALL OF THE FOLLOWING ELEMENTS (A-D)

(A) IDENTIFY THE CORNER BY REFERENCE TO THE U.S. PUBLIC LAND SURVEY SYSTEM IN DIAGRAM AT RIGHT

● = CORNER MONUMENT



(B) COORDINATES:

GEOGRAPHIC (Degrees Minutes Seconds)

LATITUDE: 43° 38' 15.6333" N

LONGITUDE: 90° 59' 21.9698" W

ELLIPSOID HT (m): _____

DATUM: NAD 1983 (2007)

GEOID03 ADJ: -32.398

ORTHOMETRIC HT: _____

VERNON COUNTY (U.S. FEET)

Coord Quality (+/-)

NORTHING (Y): 178847.689 _____

EASTING (X): 675434.325 _____

GPS METHOD USED TO COMPUTE COORDINATES (check as applicable)

RTK Observations Static Baselines OPUS-RS Solution OPUS-S Solution
 Combination of GPS Observations & Conventional Procedures

Was a Least Squares Adjustment Used to Compute Coordinates? Yes / No

BASE CONTROL USED FOR COORDINATE COMPUTATION

Station Name	Station Coordinates	Date/Time
<u>OPUS Control - CN32</u>	<u>43° 38' 27.6640" N 90° 59' 58.3490" W</u> <u>N - 180072.708 E - 672762.114</u>	<u>04/25/2010 - 14:15</u>
<u>Same</u>	_____	<u>04/26/2010 - 10:40</u>

(C) REASON FOR COORDINATES SUBMITTAL (check one)

Being Filed With a New U.S. PLS Monument Record
 To Correct the Coordinates Listed on a Previously Filed PLS Monument Record
 To Provide Coordinates for Previously Filed PLS Monument Record without Coordinates
 To Provide Supplemental Coordinates for a Previously Filed PLS Monument Record

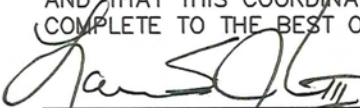
MOST RECENT PLS MONUMENT RECORD DATE:

R.L.S. WHO CREATED MOST RECENT PLS MONUMENT RECORD:

(D) AGENT(S) PERFORMING GPS OBSERVATIONS & COORDINATE COMPUTATION

1) LAURENCE E JOHNS III
 2) _____

I, LAURENCE E JOHNS III RLS 2804, REGISTERED LAND SURVEYOR, HEREBY CERTIFY THAT THE COORDINATES PROVIDED ON THIS RECORD WERE DETERMINED BY ME OR UNDER MY DIRECTION AND CONTROL AND THAT THIS COORDINATE SUBMISSION FORM IS CORRECT AND COMPLETE TO THE BEST OF MY KNOWLEDGE AND BELIEF.


 Laurence E Johns III RLS 2804
 Eagle Ridge Surveying, LLC
 PO Box 213
 Wilton, Wisconsin
 26 April 2010

