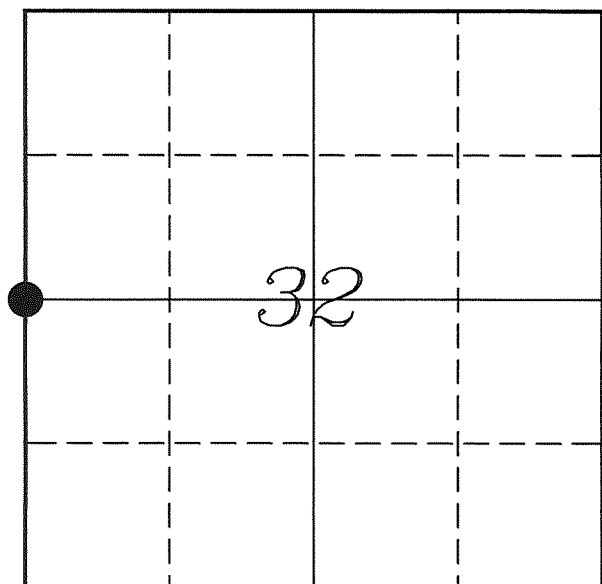


---

# U. S. PUBLIC LAND SURVEY MONUMENT RECORD

---

## SECTION 32, T14N, R5W, TOWN OF COON VERNON COUNTY, WISCONSIN



LOCATION OF LANDMARK

Crew: Laurence E Johns III  
Larry Handschy

Date: 3 May 2010

VERNON COUNTY COORDINATE SYSTEM	
Northing	181359.654
Easting	670114.057
Datum	NAD 1983 (2007)
Elevation	
Datum	
TYPE OF LANDMARK:	
Set 1 1/4" x 30" Hex Iron Bar	
BEARINGS ARE REFERENCED TO:	
Vernon County Coordinates	

---

*Describe any record evidence, monument evidence, testimonial evidence or any other material evidence you considered and whether the monument was found or restored through acceptance of an obliterated evidence location.*

No bearing trees of record were located.

Landowner stated that a pipe was near the corner. But did not think it was the actual corner. He did not know where it came from.

No fences were located in the area.

There was a fence running from the center of section to within 600 feet of this corner. Measured that fence in several places to verify the location of this corner. Extending that fence line came to a point 1 foot from the pro-rated location.

I did not accept the pipe mentioned by the landowner as it did not appear to be a surveyor's pipe and did not match the fence line to the East.

With no evidence in the immediate vicinity I set the corner at the pro-rated location between the NW Corner and SW Corner of Section 32. This location did match the fence line East of here.

The area was very rocky and could not set a Lunde Monument, placed a 1 1/4" Hex Iron Bar at the corner.

---

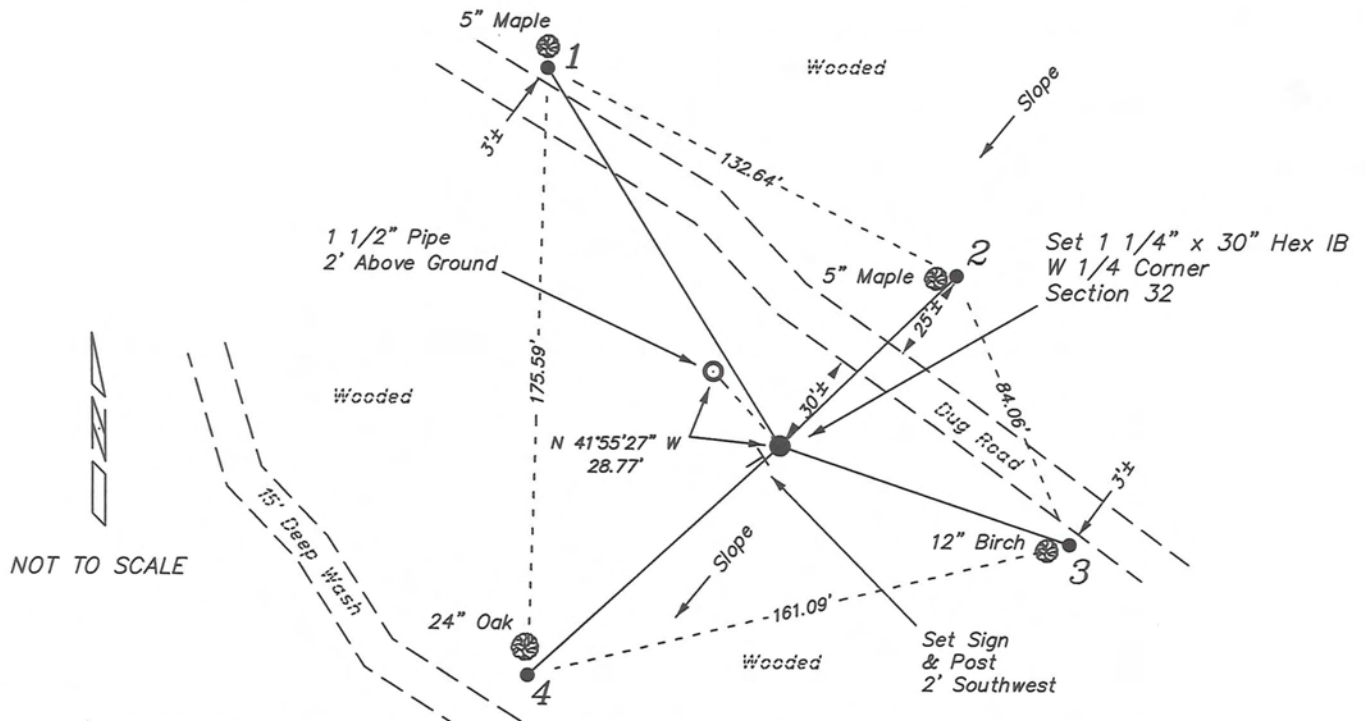
*Describe or show any material discrepancy between the location of the restored corner and that of the corner previously restored or re-established.*

Alfred Brown established this corner in October 1846.

Wm Knower was here, in January 1889, during a survey in Section 32. He re-tied the corner with two bearing trees.

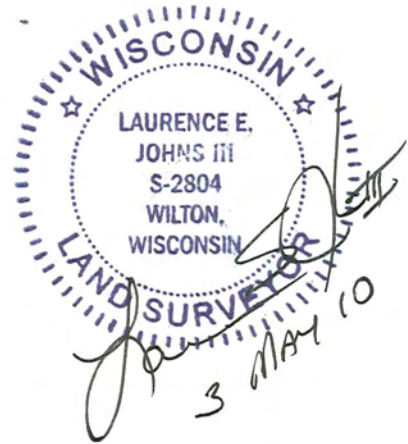
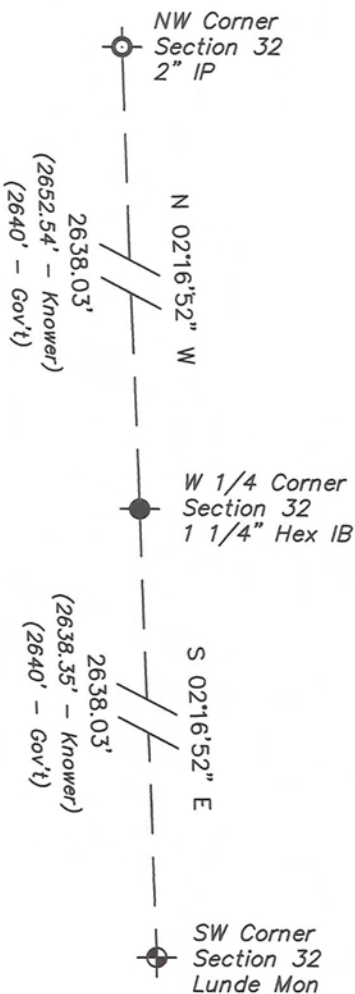
# RECORD OF DURABLE WITNESS MONUMENTS

NO	DESCRIPTION	BEARING	DISTANCE
1	Set 3/4" x 18" Iron Rod South Side of a 5" Maple	N 31°41'21" W	128.20'
2	Set 3/4" x 18" Iron Rod East Side of a 5" Maple	N 46°02'20" E	70.86'
3	Set 3/4" x 18" Iron Rod East Side of a 12" Birch	S 71°19'57" E	88.32'
4	Set 3/4" x 18" Iron Rod 1' South of a 24" White Oak	S 47°38'16" W	98.57'

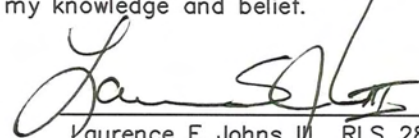


## PLAN VIEW DRAWING OF REFERENCE TIES

Map Showing Distance And Direction To Other Public Land Survey Corners Used For Re-Establishing The Corner



I, Laurence E Johns III RLS 2804, Registered Land Surveyor, hereby certify that the corner location shown on this record was determined by me or under my direction and control, and that this U.S. Public Land Survey Monument Record is correct and complete to the best of my knowledge and belief.

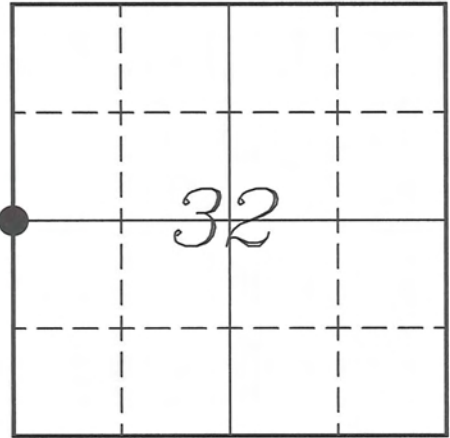
  
 Laurence E Johns III RLS 2804  
 Eagle Ridge Surveying, LLC  
 PO Box 213  
 Wilton, Wisconsin  
 3 May 2010

**VERNON COUNTY COORDINATE SUBMISSION FORM**  
 "As An Addendum To"  
**VERNON COUNTY**  
**CERTIFIED U.S. PUBLIC LAND SURVEY MONUMENT RECORD**

INSTRUCTIONS: THIS RECORD FORM SHOULD BE USED WHEN COORDINATES ARE PROVIDED FOR A PUBLIC LAND SURVEY CORNER AND SHALL INCLUDE ALL OF THE FOLLOWING ELEMENTS (A-D)

(A) IDENTIFY THE CORNER BY REFERENCE TO THE U.S. PUBLIC LAND SURVEY SYSTEM IN DIAGRAM AT RIGHT

● = CORNER MONUMENT



T 14 N, R 5 W

(B) COORDINATES:

GEOGRAPHIC (Degrees Minutes Seconds)

LATITUDE: 43° 38' 40.3038" N  
 LONGITUDE: 91° 00' 34.4060" W  
 ELLIPSOID HT (m): \_\_\_\_\_  
 DATUM: NAD 1983 (2007)  
 GEOID03 ADJ: -32.327  
 OTHROMETRIC HT: \_\_\_\_\_

VERNON COUNTY (U.S. FEET)

Coord Quality (+/-)

NORTHING (Y): 181359.654 \_\_\_\_\_  
 EASTING (X): 670114.057 \_\_\_\_\_

GPS METHOD USED TO COMPUTE COORDINATES (check as applicable)

RTK Observations     Static Baselines     OPUS-RS Solution     OPUS-S Solution  
 Combination of GPS Observations & Conventional Procedures

Was a Least Squares Adjustment Used to Compute Coordinates? Yes /  No

BASE CONTROL USED FOR COORDINATE COMPUTATION

Station Name	Station Coordinates	Date/Time
<u>OPUS Control - CN32</u>	<u>43° 38' 27.6640" N 90° 59' 58.3490" W</u>	<u>05/03/2010 - 13:37</u>
	<u>N - 180072.708 E - 672762.114</u>	
<u>Same</u>		<u>05/06/2010 - 12:22</u>

(C) REASON FOR COORDINATES SUBMITTAL (check one)

Being Filed With a New U.S. PLS Monument Record  
 To Correct the Coordinates Listed on a Previously Filed PLS Monument Record  
 To Provide Coordinates for Previously Filed PLS Monument Record without Coordinates  
 To Provide Supplemental Coordinates for a Previously Filed PLS Monument Record

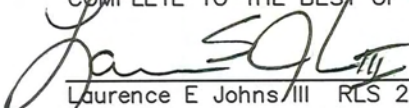
MOST RECENT PLS MONUMENT RECORD DATE:

R.L.S. WHO CREATED MOST RECENT PLS MONUMENT RECORD:

(D) AGENT(S) PERFORMING GPS OBSERVATIONS & COORDINATE COMPUTATION

1) LAURENCE E JOHNS III  
 2) \_\_\_\_\_

I, LAURENCE E JOHNS III RLS 2804, REGISTERED LAND SURVEYOR, HEREBY CERTIFY THAT THE COORDINATES PROVIDED ON THIS RECORD WERE DETERMINED BY ME OR UNDER MY DIRECTION AND CONTROL AND THAT THIS COORDINATE SUBMISSION FORM IS CORRECT AND COMPLETE TO THE BEST OF MY KNOWLEDGE AND BELIEF.

  
 Laurence E Johns/III RLS 2804  
 Eagle Ridge Surveying, LLC  
 PO Box 213  
 Wilton, Wisconsin  
 6 May 2010

