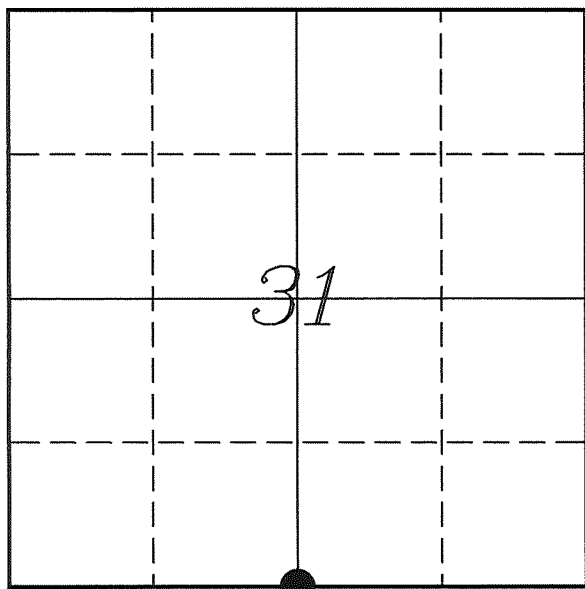


---

# U. S. PUBLIC LAND SURVEY MONUMENT RECORD

---

## SECTION 31, T14N, R5W, TOWN OF COON VERNON COUNTY, WISCONSIN



LOCATION OF LANDMARK

Crew: Laurence E Johns III  
Larry Handschy

Date: 3 May 2010

VERNON COUNTY COORDINATE SYSTEM	
Northing	178674.802
Easting	667588.643
Datum	NAD 1983 (2007)
Elevation	
Datum	
TYPE OF LANDMARK:	
Set 1 1/4" x 18" Iron Rod	
BEARINGS ARE REFERENCED TO:	
Vernon County Coordinates	

---

*Describe any record evidence, monument evidence, testimonial evidence or any other material evidence you considered and whether the monument was found or restored through acceptance of an obliterated evidence location.*

No bearing trees of record were located.

The prorated location for this corner is 4'± West of a North/South fence and 3'± North of the East/West Fence.

The North/South fence appeared old and in the same place for a number of years.

I accepted the straight line between the SW and SE Corners and the fence to the North as the best available evidence of the original corner.

The corner falls just on the North side of a 24" Maple and because of the extensive root system was not able to set a Lunde Monument. Set a 1 1/4" Iron Rod at the corner.

---

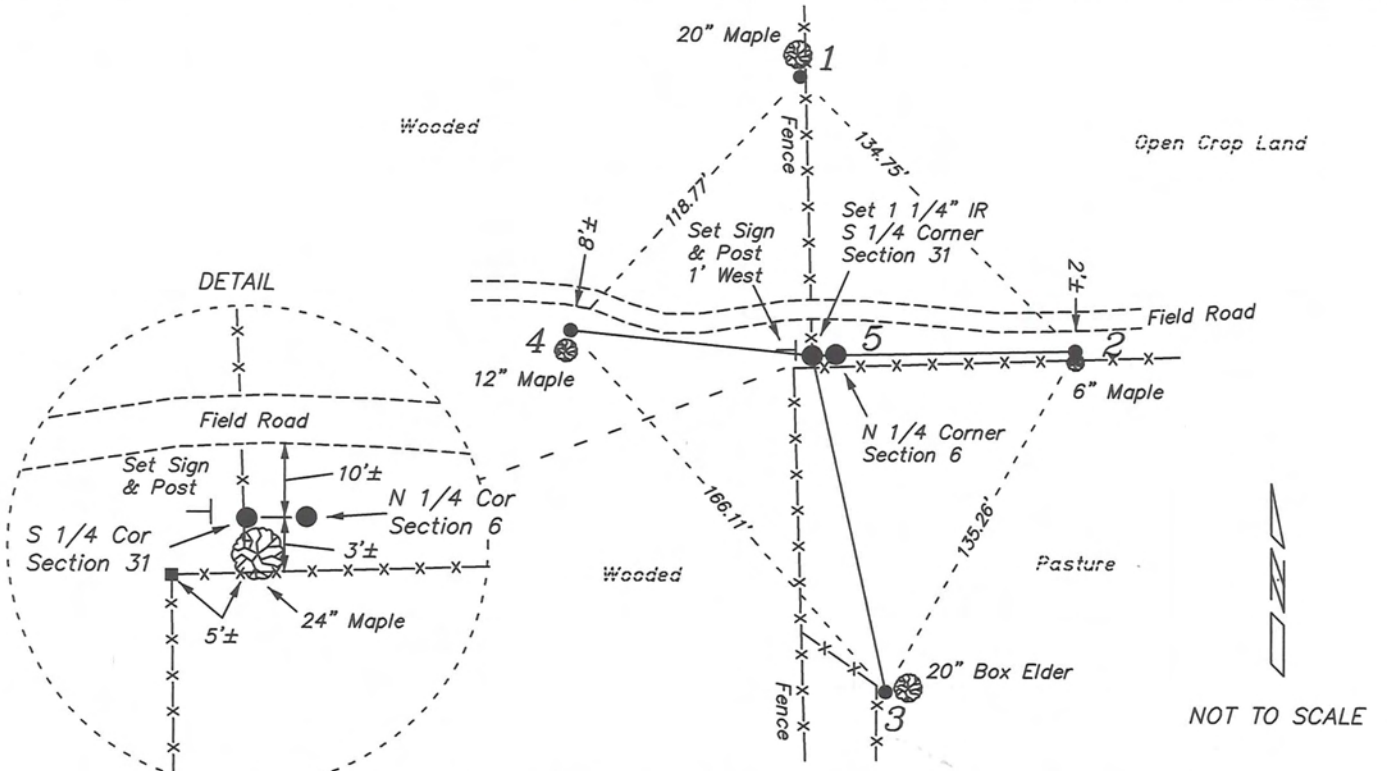
*Describe or show any material discrepancy between the location of the restored corner and that of the corner previously restored or re-established.*

J E Whitcher established this corner in November 1844.

No other recorded survey using this corner.

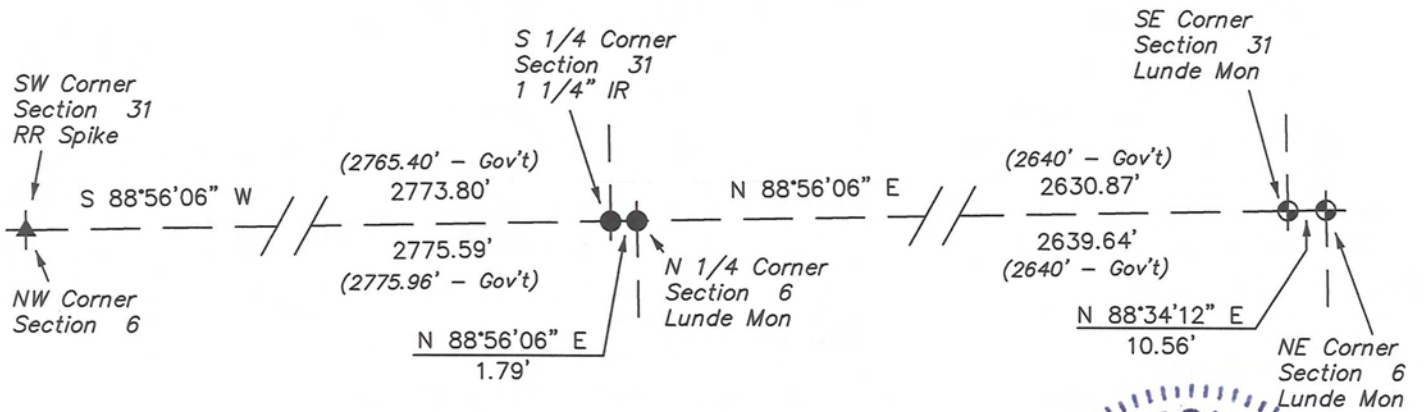
# RECORD OF DURABLE WITNESS MONUMENTS

NO	DESCRIPTION	BEARING	DISTANCE
1	Set 3/4" x 18" Iron Rod In Fence/South Side of 20" Maple	N 02°35'35" W	96.87'
2	Set 3/4" x 18" Iron Rod In Fence/North Side of 6" Maple	N 87°18'02" E	91.81'
3	Set 3/4" x 18" Iron Rod West Side of 20" Box Elder	S 12°24'05" E	119.30'
4	Set 3/4" x 18" Iron Rod North Side of 12" Maple	N 84°14'20" W	84.23'
5	1 1/4" Iron Rod N 1/4 Corner - Section 6	N 88°56'06" E	1.79'



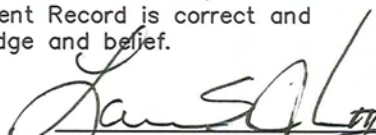
Map Showing Distance And Direction To Other Public Land Survey  
Corners Used For Re-Establishing The Corner

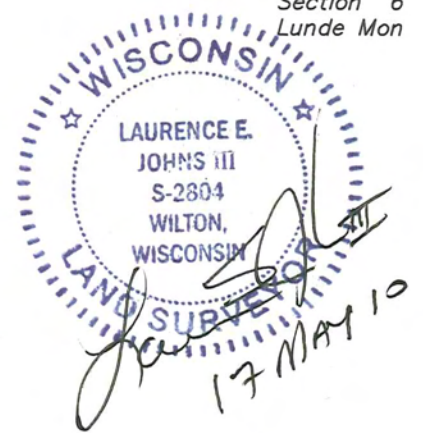
**T 14 N - R 5 W**



**T 13 N - R 5 W**

I, Laurence E Johns III RLS 2804, Registered Land Surveyor, hereby certify that the corner location shown on this record was determined by me or under my direction and control, and that this U.S. Public Land Survey Monument Record is correct and complete to the best of my knowledge and belief.

  
 Laurence E Johns III RLS 2804  
 Eagle Ridge Surveying, LLC  
 PO Box 213  
 Wilton, Wisconsin  
 17 May 2010

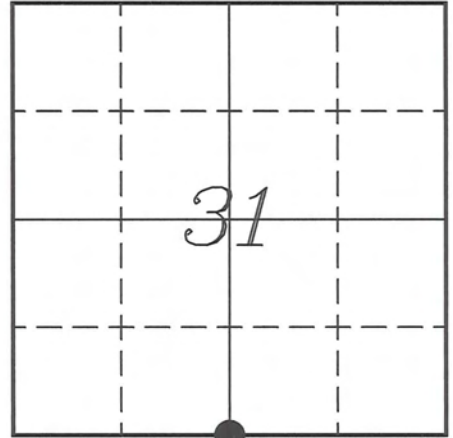


**VERNON COUNTY COORDINATE SUBMISSION FORM**  
**"As An Addendum To"**  
**VERNON COUNTY**  
**CERTIFIED U.S. PUBLIC LAND SURVEY MONUMENT RECORD**

INSTRUCTIONS: THIS RECORD FORM SHOULD BE USED WHEN COORDINATES ARE PROVIDED FOR A PUBLIC LAND SURVEY CORNER AND SHALL INCLUDE ALL OF THE FOLLOWING ELEMENTS (A-D)

(A) IDENTIFY THE CORNER BY REFERENCE TO THE U.S. PUBLIC LAND SURVEY SYSTEM IN DIAGRAM AT RIGHT

● = CORNER MONUMENT



(B) COORDINATES:

GEOGRAPHIC (Degrees Minutes Seconds)

LATITUDE: 43° 38' 13.7200" N

LONGITUDE: 91° 01' 08.6461" W

ELLIPSOID HT (m): \_\_\_\_\_

DATUM: NAD 1983 (2007)

GEOID03 ADJ: -32.282

ORTHOMETRIC HT: \_\_\_\_\_

VERNON COUNTY (U.S. FEET)

Coord Quality (+/-)

NORTHING (Y): 178674.802 \_\_\_\_\_

EASTING (X): 667588.643 \_\_\_\_\_

GPS METHOD USED TO COMPUTE COORDINATES (check as applicable)

RTK Observations     Static Baselines     OPUS-RS Solution     OPUS-S Solution  
 Combination of GPS Observations & Conventional Procedures

Was a Least Squares Adjustment Used to Compute Coordinates? Yes /  No

BASE CONTROL USED FOR COORDINATE COMPUTATION

Station Name	Station Coordinates	Date/Time
<u>OPUS Control - CN32</u>	<u>43° 38' 27.6640" N 90° 59' 58.3490" W</u> <u>N - 180072.708 E - 672762.114</u>	<u>05/03/2010 - 15:00</u>
<u>Same</u>	_____	<u>05/06/2010 - 12:56</u>

(C) REASON FOR COORDINATES SUBMITTAL (check one)

Being Filed With a New U.S. PLS Monument Record  
 To Correct the Coordinates Listed on a Previously Filed PLS Monument Record  
 To Provide Coordinates for Previously Filed PLS Monument Record without Coordinates  
 To Provide Supplemental Coordinates for a Previously Filed PLS Monument Record

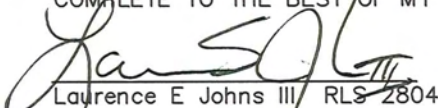
MOST RECENT PLS MONUMENT RECORD DATE:

R.L.S. WHO CREATED MOST RECENT PLS MONUMENT RECORD:

(D) AGENT(S) PERFORMING GPS OBSERVATIONS & COORDINATE COMPUTATION

1) LAURENCE E JOHNS III  
 2) \_\_\_\_\_

I, LAURENCE E JOHNS III RLS 2804, REGISTERED LAND SURVEYOR, HEREBY CERTIFY THAT THE COORDINATES PROVIDED ON THIS RECORD WERE DETERMINED BY ME OR UNDER MY DIRECTION AND CONTROL AND THAT THIS COORDINATE SUBMISSION FORM IS CORRECT AND COMPLETE TO THE BEST OF MY KNOWLEDGE AND BELIEF.

  
 Laurence E Johns III RLS 2804  
 Eagle Ridge Surveying LLC  
 PO Box 213  
 Wilton, Wisconsin  
 6 May 2010

