

CERTIFIED LAND CORNER

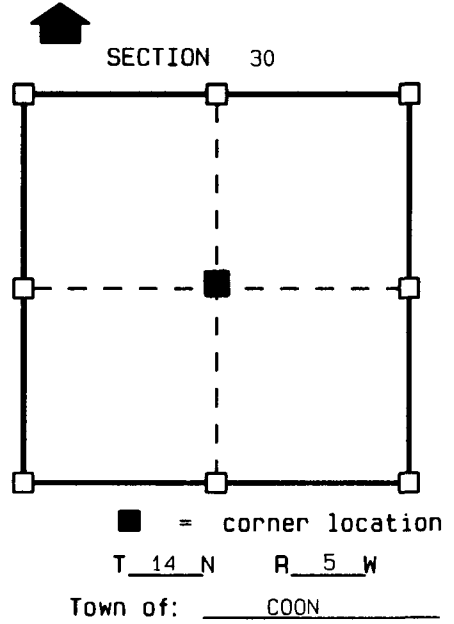
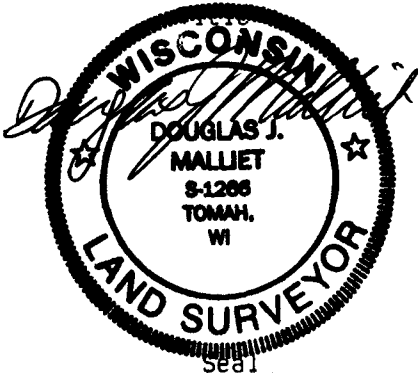
STATE OF WISCONSIN )  
 COUNTY OF VERNON ) S.S.

CERTIFICATE

I, DOUGLAS J. MALLIET, do hereby certify that on the 30th day of MAY 1996, I found ~~(evidence)~~ (no evidence) of the CENTER corner of SECTION 30, T14 N, R5 W, Fourth Principal Meridian, and I re-established said corner according to the Wisconsin Statutes as shown and described hereon.

Dated this 4th day of JUNE 1996

DOUGLAS J. MALLIET R.L.S. S-1266



History of original corner establishment:  
 CORNER ESTABLISHED AND TIED BY C.M. STERLING IN 1893.

Description of corner evidence found:

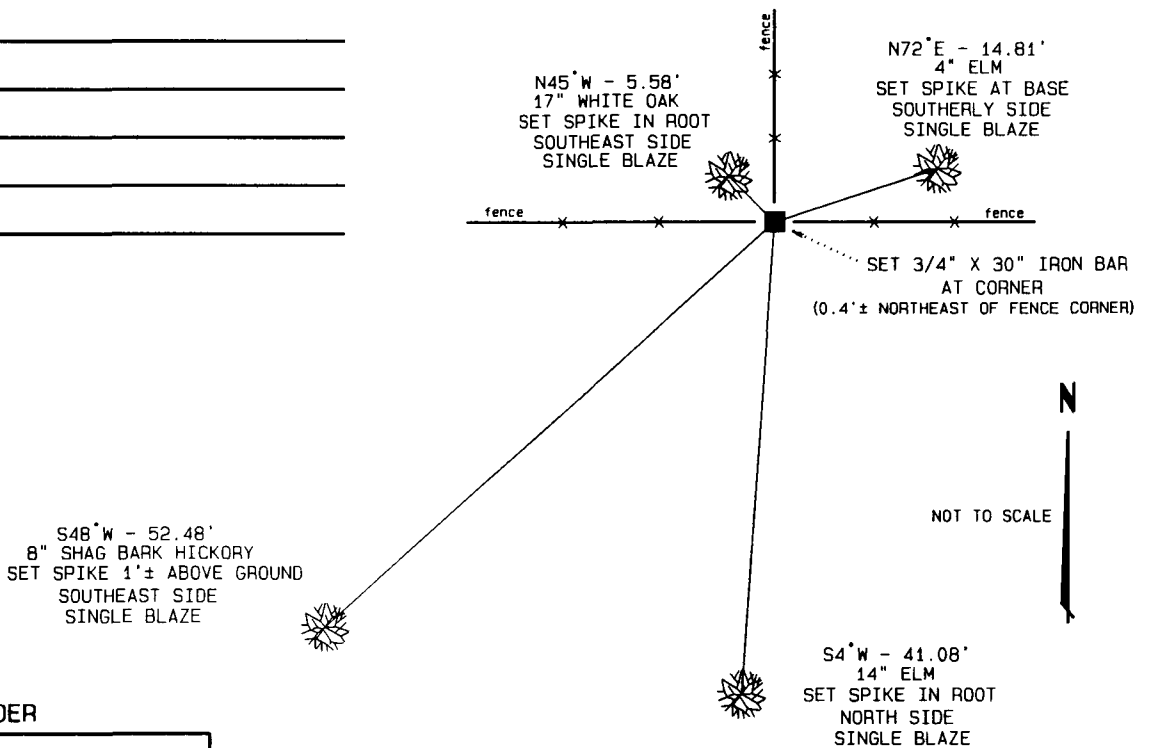
RE-ESTABLISHED CORNER AT STERLING'S RECORDED DISTANCES FROM BOTH THE W 1/4 AND THE S 1/4 CORNERS OF SECTION 30. CORNER FITS OCCUPIED FENCE CORNER WITHIN 0.4'±.

Description of corner and witness monuments, references and accessories used to perpetuate the original or re-established location of this corner:

Witnesses to corner location:

DOUGLAS J. MALLIET  
TOM HARNEISH

Sketch:



SURVEY CONTROL ORDER

Horizontal
Vertical

WISCONSIN COORDINATE SYSTEM

Corner	East (X)	North (Y)	Elevation (Z)	Zone
Control Sta. Name				