

RECEIVED
 MAR 18 2004
 BY: G. Jacobson

Vernon County Certified U.S. Public Land Survey Monument Record

INSTRUCTIONS: THIS RECORD SHALL SHOW THE LOCATION OF THE CORNER AND SHALL INCLUDE ALL OF THE FOLLOWING ELEMENTS (A-I)

(A) IDENTIFY THE CORNER BY REFERENCE TO THE U.S. PUBLIC LAND SURVEY SYSTEM

■ - CORNER MONUMENT RESTORED

WITNESSES TO CORNER LOCATION:

- 1) Curtis J. Cumber
- 2) Jeff C. Nedland
- 3) Jay D. Pederson

STATE PLANE COORDINATES (WISCONSIN SOUTH ZONE)

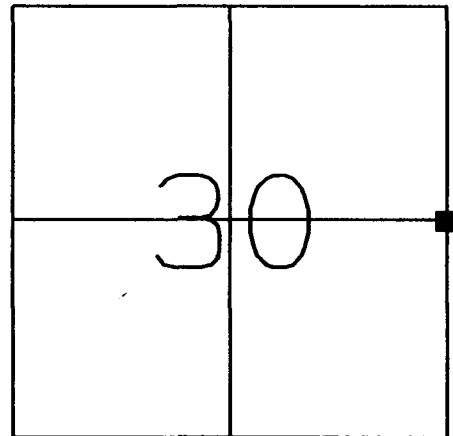
NORTHING:

EASTING:

VERNON COUNTY COORDINATES

NORTHING: 186,634.65

EASTING: 670,014.53



SECTION 30, TOWN 14 NORTH, RANGE 5 WEST
 Coon Township

(B) DESCRIBE ANY RECORD EVIDENCE, MONUMENT EVIDENCE, OCCUPATIONAL EVIDENCE, TESTIMONIAL EVIDENCE OR ANY OTHER MATERIAL EVIDENCE YOU CONSIDERED, AND WHETHER THE MONUMENT WAS FOUND OR PLACED.

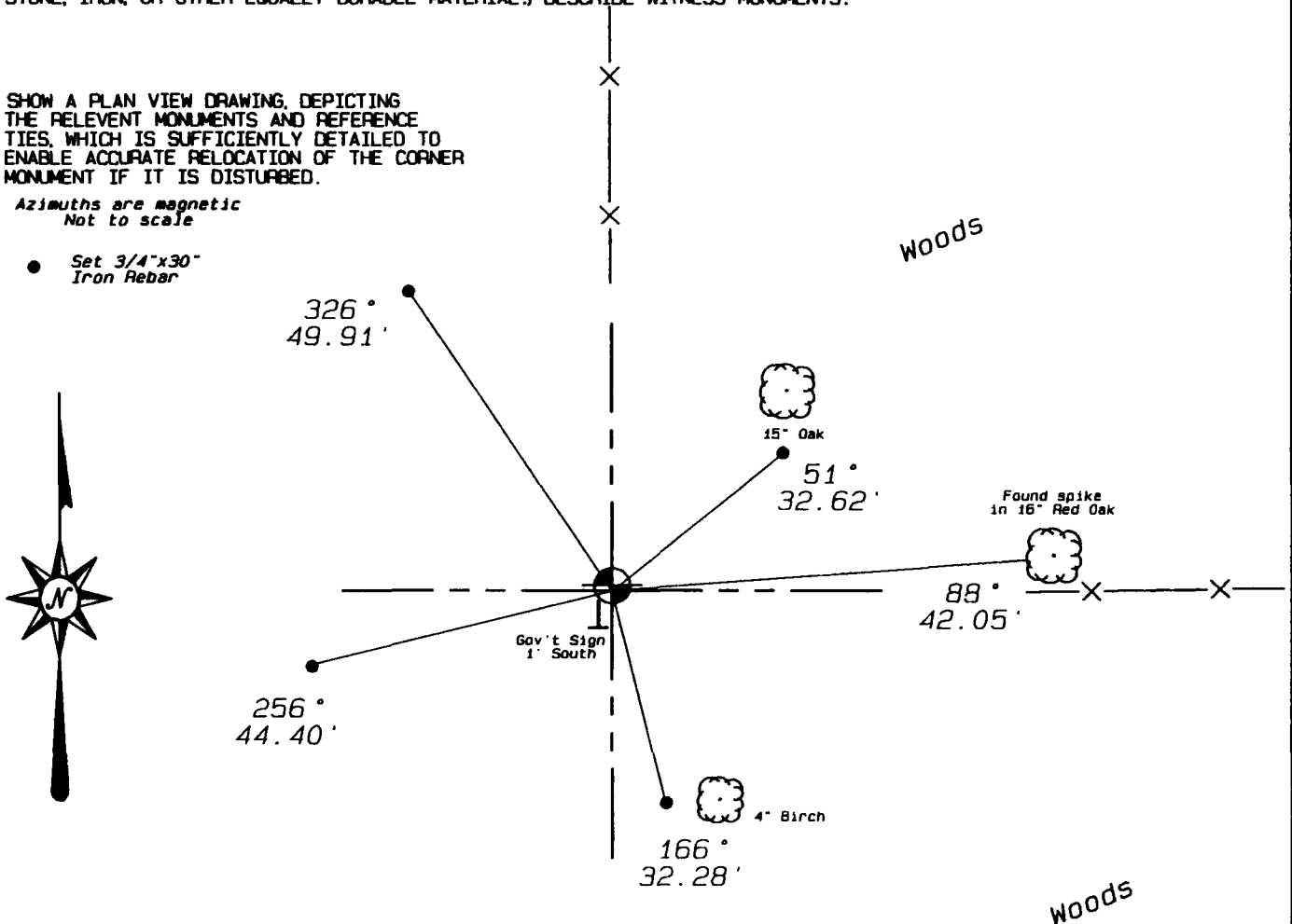
Found 3/4" iron bar set by Robert M. Lampman in 1996. Replaced iron bar with Vernon County Monument.

(C) IN THE PLAN VIEW DRAWING BELOW, PROVIDE REFERENCE TIES TO AT LEAST 4 WITNESS MONUMENTS OR, IF THE LOCATION IS WITHIN A MUNICIPALITY, TO AT LEAST 2 WITNESS MONUMENTS. (WITNESS MONUMENTS SHALL BE MADE OF CONCRETE, NATURAL STONE, IRON, OR OTHER EQUALLY DURABLE MATERIAL.) DESCRIBE WITNESS MONUMENTS.

(D) SHOW A PLAN VIEW DRAWING, DEPICTING THE RELEVANT MONUMENTS AND REFERENCE TIES, WHICH IS SUFFICIENTLY DETAILED TO ENABLE ACCURATE RELOCATION OF THE CORNER MONUMENT IF IT IS DISTURBED.

Azimuths are magnetic
 Not to scale

- Set 3/4"x30" Iron Rebar



JUN 19 1996

CERTIFIED LAND CORNER

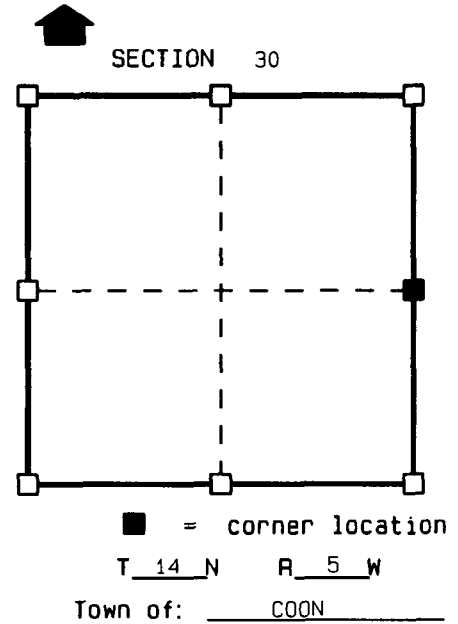
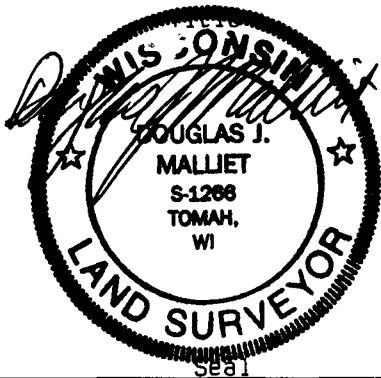
STATE OF WISCONSIN)
 COUNTY OF VERNON) S.S.

CERTIFICATE

I, DOUGLAS J. MALLIET, do hereby certify
 that on the 30th day of MAY 1996,
 I found ~~(evidence)~~ (no evidence) of the E 1/4
 corner of SECTION 30, T14 N, R5 W,
 Fourth Principal Meridian, and I re-established
 said corner according to the Wisconsin Statutes
 as shown and described hereon.

Dated this 4th day of JUNE 1996

DOUGLAS J. MALLIET R.L.S. S-1266



History of original corner establishment:
 ORIGINAL CORNER ESTABLISHED BY BROWN IN 1846.
 CORNER WAS RE-ESTABLISHED AND TIED BY W.H.KNOWER IN 1878, DURING A SURVEY
 IN SECTION 29.
 IN 1893, C.M.STERLING USED THE CORNER AS ESTABLISHED BY KNOWER FOR A SURVEY IN
 SECTION 30.

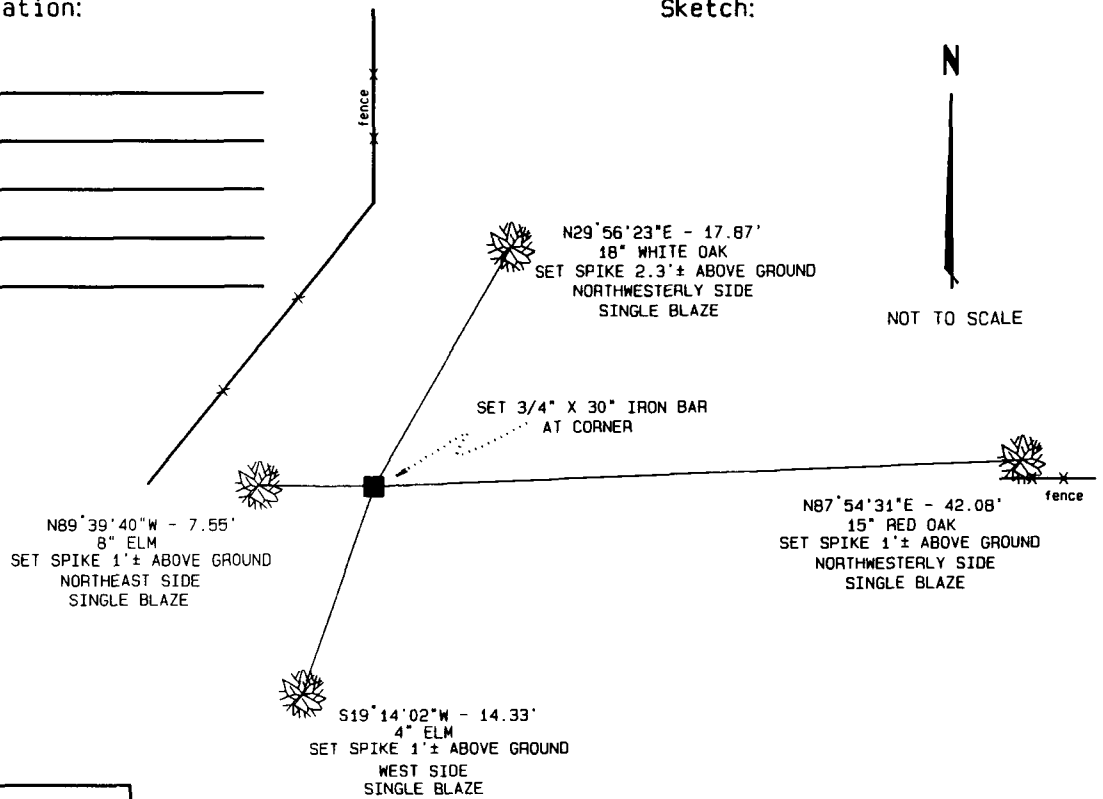
Description of corner evidence found:
 EXTENDED FENCES COMING FROM THE NORTH AND EAST TO A POINT OF INTERSECTION.
 ACCEPTED THIS LOCATION AND SET CORNER.

Description of corner and witness monuments, references and accessories used to
 perpetuate the original or re-established location of this corner:

Witnesses to corner location:

DOUGLAS J. MALLIET
TOM HARNEISH

Sketch:



SURVEY CONTROL ORDER

Horizontal
Vertical

WISCONSIN COORDINATE SYSTEM

Corner	East (X)	North (Y)	Elevation (Z)	Zone
Control Sta. Name				

