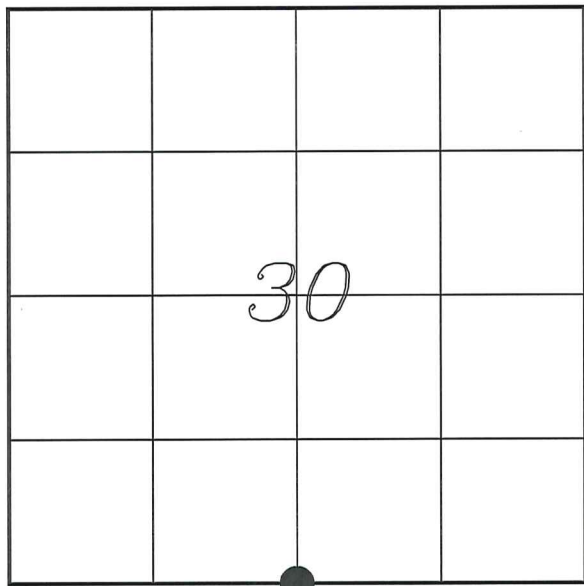


U. S. PUBLIC LAND SURVEY MONUMENT RECORD

SECTION 30, T14N, R5W, TOWN OF COON
VERNON COUNTY, WISCONSIN



LOCATION OF LANDMARK

VERNON COUNTY COORDINATE SYSTEM	
Northing	183971.654
Easting	667363.576
Datum	NAD 1983 (2011)
Elevation	
Datum	
TYPE OF LANDMARK: Set Lunde Monument 4" Brass Capped Iron Pipe	
BEARINGS ARE REFERENCED TO: Vernon County Coordinates (Survey Grade)	

Witnesses: Laurence E Johns III

Date: 7 May 2020

Describe or show any material discrepancy between the location of the restored corner and that of the corner previously restored or re-established.

Alfred L Brown established this corner in October 1846.

C M Sterling was at this corner, in October 1893, during a survey in Section 30. He shows the corner as lost.

Robert Lampman was at this corner, in November 1978, during a survey in Section 30/31. He shows he set a 2" iron pipe.

Douglas Malliet was at this corner, in June 1996, during a survey in Section 30. He shows he found a 2" iron pipe.

Describe any record evidence, monument evidence, testimonial evidence or any other material evidence you considered and whether the monument was found or restored through acceptance of an obliterated evidence location.

No bearing trees of record were located.

This location is 6.3' South of the straight line between section corners. Lampman shows he set this corner on a straight line.

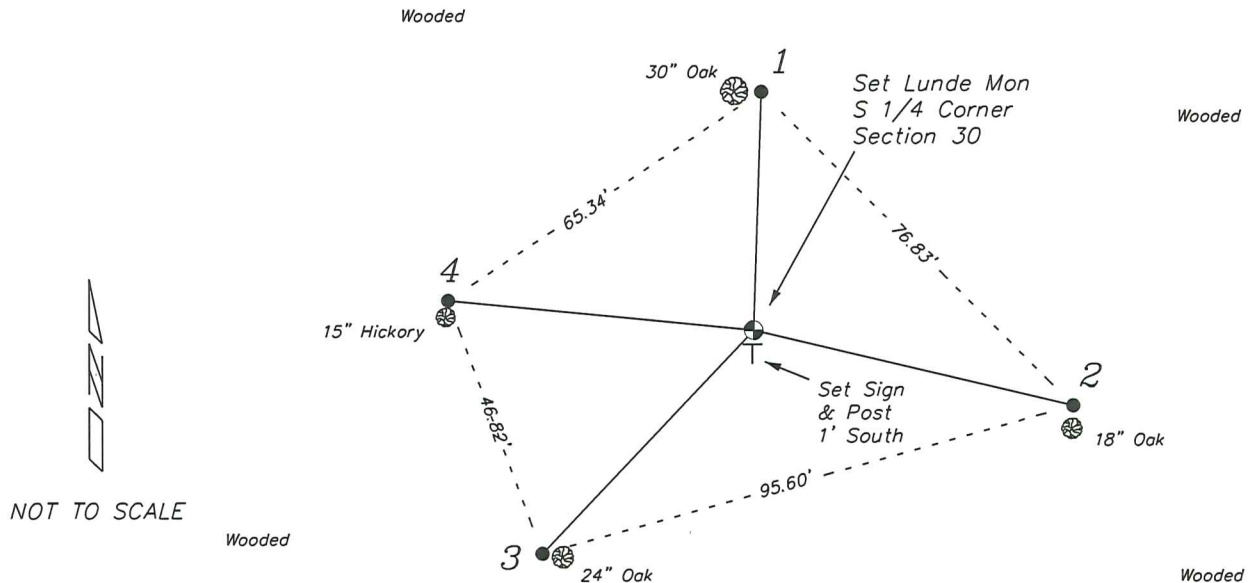
Malliet shows he accepted this monument as the corner and measured to the West and East. Malliet shows the '40' Corner West of this corner to be 3.5' South of the '40' Corner set by Lampman. Lampman's '40' Corner is located on a straight line between section corners. This shows that Lampman's 2" iron pipe maybe incorrectly placed.

Even though this corner may be incorrectly placed, there is no occupation or other evidence that disagrees with its location. The current land owners are aware of its location. I decided that since the pipe has been in place for 42 years I felt that it was best left in place.

I replaced the 2" iron pipe with a Lunde monument and accepted it as the location of the S 1/4 Corner of Section 30.

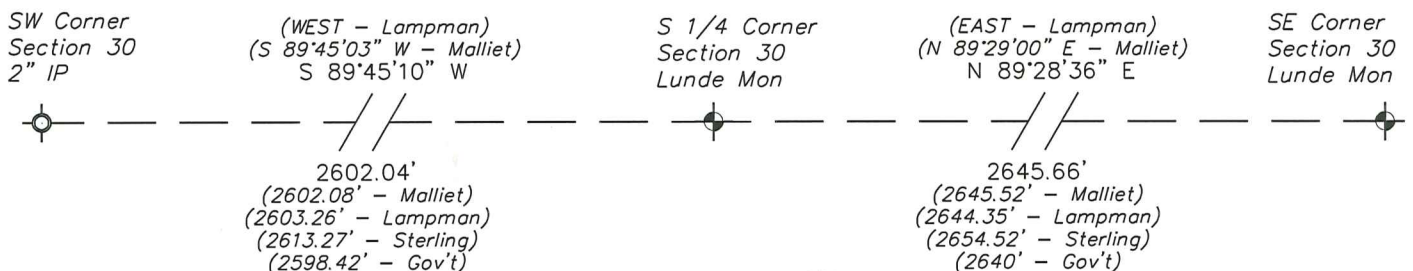
RECORD OF DURABLE WITNESS MONUMENTS

NO	DESCRIPTION	BEARING	DISTANCE
1	Set 3/4" x 18" Iron Rod 1' East of a 30' Oak with Blaze	N 01°54'22" E	41.49'
2	Set 3/4" x 18" Iron Rod 2' North of a 18' Oak with Blaze	S 76°40'30" E	56.97'
3	Set 3/4" x 18" Iron Rod 1' West of a 24" Oak	S 43°30'11" W	53.30'
4	Set 3/4" x 18" Iron Rod 1' North of a 15" Hickory	N 84°22'00" W	53.25'



PLAN VIEW DRAWING OF REFERENCE TIES

*Map Showing Distance And Direction To Other Public Land Survey
Corners Used For Re-Establishing The Corner*



I, Laurence E Johns III PLS 2804, Professional Land Surveyor, hereby certify that the corner location shown on this record was determined by me or under my direction and control, and that this U.S. Public Land Survey Monument Record is correct and complete to the best of my knowledge and belief.

