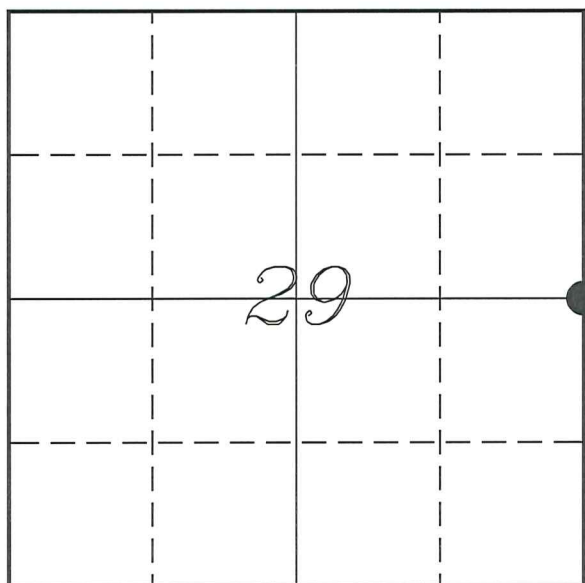


---

# U. S. PUBLIC LAND SURVEY MONUMENT RECORD

---

## SECTION 29, T14N, R5W, TOWN OF COON VERNON COUNTY, WISCONSIN



*LOCATION OF LANDMARK*

<i>VERNON COUNTY COORDINATE SYSTEM</i>	
<i>Northing</i>	<i>186758.587</i>
<i>Easting</i>	<i>675278.323</i>
<i>Datum</i>	<i>NAD 1983 (2011)</i>
<i>Elevation</i>	
<i>Datum</i>	
<i>TYPE OF LANDMARK:</i>	
<i>Existing 7/8" Iron Rod</i>	
<i>BEARINGS ARE REFERENCED TO:</i>	
<i>Vernon County Coordinates (Survey Grade)</i>	

Witnesses: Laurence E Johns III

Date: 11 June 2020

---

*Describe or show any material discrepancy between the location of the restored corner and that of the corner previously restored or re-established.*

Alfred L Brown established this corner in October 1846.

Wm Knower was at this corner, in December 1878, during a survey in Section 29. He shows this corner at the mid-point between section corners. He does not show this corner as lost or found but it would be assumed as being lots.

Wm Knower was at this corner again, in September 1885, during a survey in Section 28. He shows he found the government corner.

Curtis Cummer was at this corner, in July 2006. He shows he set a 7/8" iron bar and prepared a tie sheet.

Mike Harding was at this corner, in December 2008, during a survey in Sections 28 & 29. He shows he found a 3/4" iron rod.

Curtis Cummer was at this corner again, in September 2010, during a survey in Section 29. He shows that he found an 1 1/4" iron rod.

Christian Running was at this corner, in March 2018, during a survey in Section 29. He shows he found an 1 1/4" iron rod.

Christopher Fechner was at this corner, in September 2019, during a survey in Section 28. He shows he found a 7/8" iron rod.

---

*Describe any record evidence, monument evidence, testimonial evidence or any other material evidence you considered and whether the monument was found or restored through acceptance of an obliterated evidence location.*

No bearing trees of record were located.

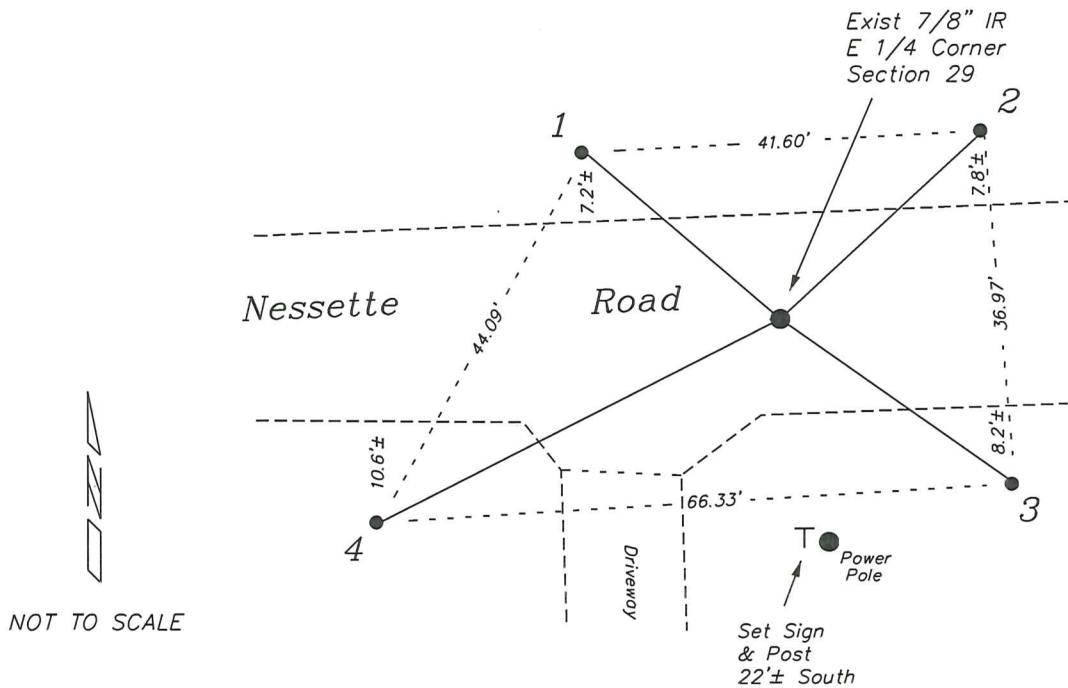
I found the 7/8" iron rod set by Cummer and his 4 ties.

This location fits very well with Knower's distances and fits the centerline of Nessette Road and fits occupation to the South.

I accepted the location of the iron rod as the best available evidence of the original government corner.

# RECORD OF DURABLE WITNESS MONUMENTS

NO	DESCRIPTION	BEARING	DISTANCE
1	Existing 3/4" Iron Rod At Field Edge	N 49°25'18" W (N 49°35' W)	26.75' (26.73')
2	Existing 3/4" Iron Rod At Field Edge	N 47°16'35" E (N 41°27' E)	28.89' (28.85')
3	Existing 3/4" Iron Rod At Field Edge	S 54°50'22" E (S 54°46' E)	29.92' (29.88')
4	Existing 3/4" Iron Rod South Side of Fire Sign S5299	S 63°09'26" W (S 63°08' W)	46.80' (46.65')



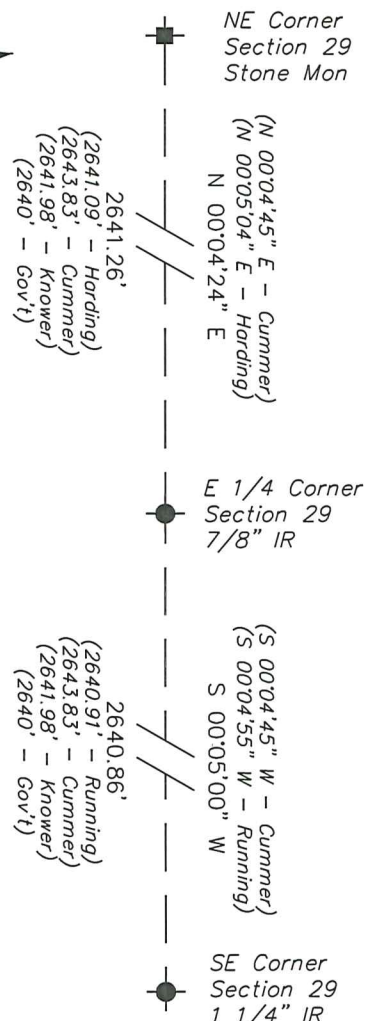
## PLAN VIEW DRAWING OF REFERENCE TIES

Map Showing Distance And Direction To Other Public Land Survey Corners Used For Re-Establishing The Corner

Note:

Measurements were not made to this corner at this time.

Bearings and distances shown are based on recorded information and shown for reference.



I, Laurence E Johns III PLS 2804, Professional Land Surveyor, hereby certify that the corner location shown on this record was determined by me or under my direction and control, and that this U.S. Public Land Survey Monument Record is correct and complete to the best of my knowledge and belief.

# Vernon County Certified U.S. Public Land Survey Monument Record

INSTRUCTIONS: THIS RECORD SHALL SHOW THE LOCATION OF THE CORNER AND SHALL INCLUDE ALL OF THE FOLLOWING ELEMENTS (A-I)

(A) IDENTIFY THE CORNER BY REFERENCE TO THE U.S. PUBLIC LAND SURVEY SYSTEM

■ = CORNER MONUMENT RESTORED

WITNESSES TO CORNER LOCATION:

- 1) Chad L. Crook
- 2) Brenda A. Crook
- 3)

STATE PLANE COORDINATES (WISCONSIN SOUTH ZONE)

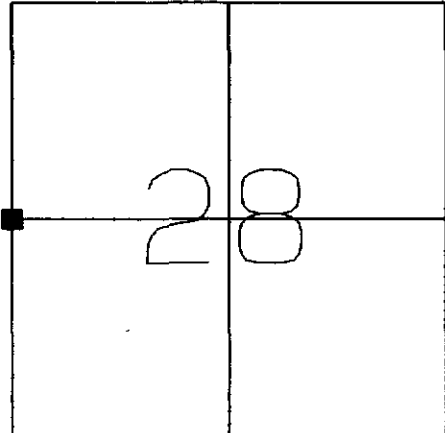
NORTHING:

EASTING:

VERNON COUNTY COORDINATES

NORTHING: 186,759.00

EASTING: 675,278.05



SECTION 28, TOWNSHIP 14 NORTH, RANGE 5 WEST  
TOWN OF COON

(B) DESCRIBE ANY RECORD EVIDENCE, MONUMENT EVIDENCE, OCCUPATIONAL EVIDENCE, TESTIMONIAL EVIDENCE OR ANY OTHER MATERIAL EVIDENCE YOU CONSIDERED, AND WHETHER THE MONUMENT WAS FOUND OR PLACED.

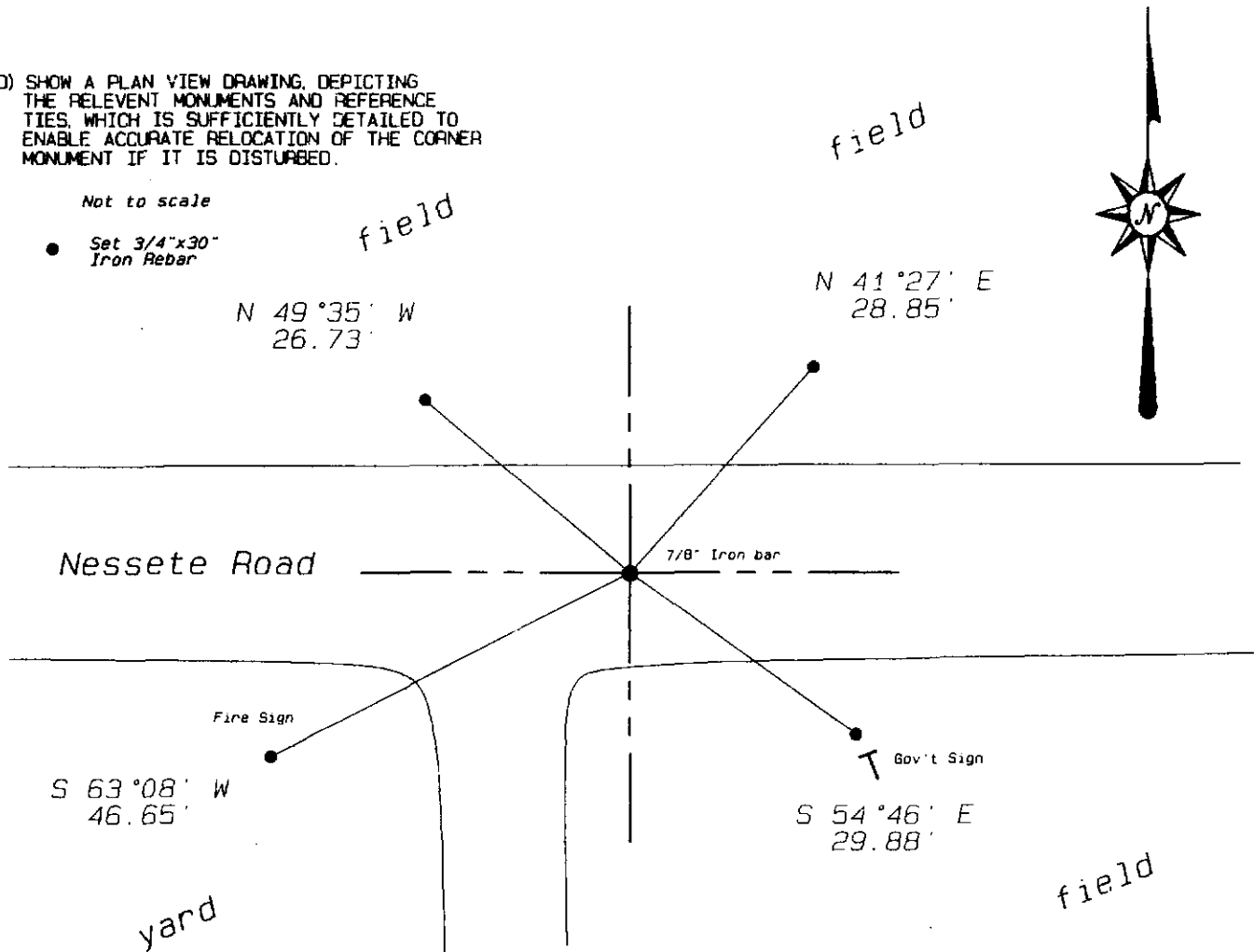
Placed a 7/8" iron bar midway between the Northwest corner and the occupied Southwest corner of Section 28. This location is supported by occupation to the South as well as matching very well with the centerline of Nessete Road. W. Knower, May 17, 1879 shows corner location midway between adjoining Section corners.

(C) IN THE PLAN VIEW DRAWING BELOW, PROVIDE REFERENCE TIES TO AT LEAST 4 WITNESS MONUMENTS OR, IF THE LOCATION IS WITHIN A MUNICIPALITY, TO AT LEAST 2 WITNESS MONUMENTS. (WITNESS MONUMENTS SHALL BE MADE OF CONCRETE, NATURAL STONE, IRON, OR OTHER EQUALLY DURABLE MATERIAL.) DESCRIBE WITNESS MONUMENTS.

(D) SHOW A PLAN VIEW DRAWING, DEPICTING THE RELEVANT MONUMENTS AND REFERENCE TIES, WHICH IS SUFFICIENTLY DETAILED TO ENABLE ACCURATE RELOCATION OF THE CORNER MONUMENT IF IT IS DISTURBED.

Not to scale

- Set 3/4"x30" Iron Rebar



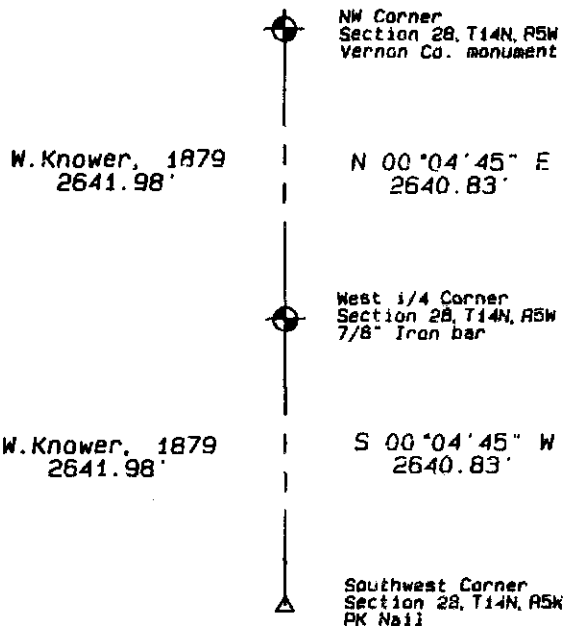
(E) DESCRIBE ANY MATERIAL DISCREPANCY BETWEEN THE LOCATION OF THE CORNER AS RESTORED OR REESTABLISHED AND THE LOCATION OF THAT CORNER AS PREVIOUSLY RESTORED OR REESTABLISHED BY DISTANCE AND DIRECTION. SHOW THE DISCREPANCY ON THE PLAN VIEW DRAWING UNDER (D), ABOVE. SHOW THE DISTANCES BETWEEN THE CORNER AS PREVIOUSLY RESTORED OR REESTABLISHED AND (1) THE CORNER AS RESTORED OR REESTABLISHED, AND (2) TO AT LEAST 2 OF THE WITNESS MONUMENTS AS SHOWN ON THE DRAWING IN (D), ABOVE.

(NA)

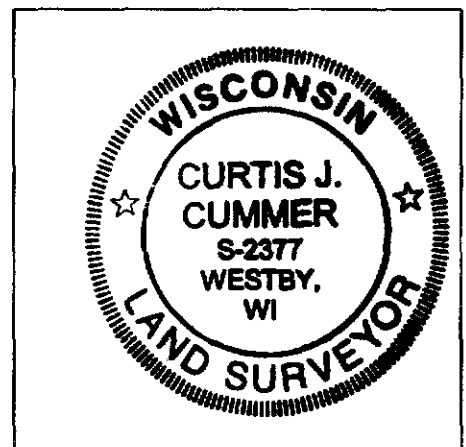
(F) WAS THE CORNER RESTORED THROUGH ACCEPTANCE OF (1) AN OBLITERATED EVIDENCE LOCATION, OR (2) A FOUND PERPETUATED LOCATION?

(1)

(G & H) WAS THE CORNER REESTABLISHED THROUGH LOST CORNER PROPORTIONATE METHODS? IF SO SHOW THE METHOD, INCLUDING THE DIRECTION AND DISTANCES TO THE OTHER PUBLIC LAND SURVEY CORNERS USED AS EVIDENCE OR USED FOR PROPORTIONING IN DETERMINING THE CORNER LOCATION.



LAND SURVEYOR SEAL



(I) I, Curtis J. Cummer, CERTIFY THAT THE LOCATION SHOWN ON THIS RECORD WAS DETERMINED BY ME OR UNDER MY DIRECTION AND CONTROL AND THAT THIS U.S. PUBLIC LAND SURVEY MONUMENT RECORD IS CORRECT AND COMPLETE TO THE BEST OF MY KNOWLEDGE AND BELIEF.

 7/10/06  
SIGNATURE DATE