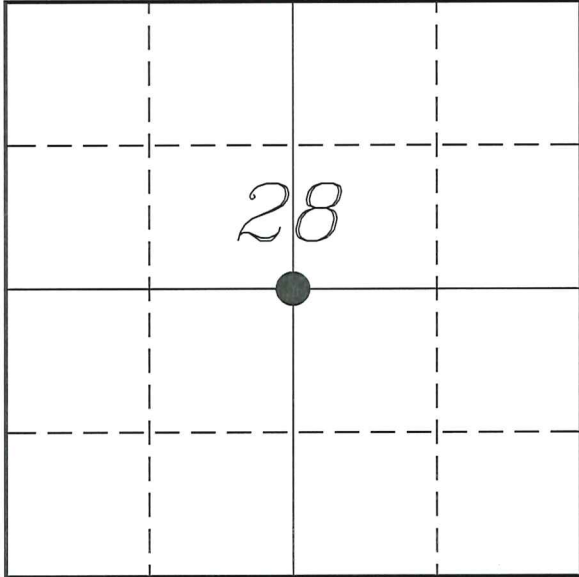


U. S. PUBLIC LAND SURVEY MONUMENT RECORD

SECTION 28, T14N, R5W, TOWN OF COON  
 VERNON COUNTY, WISCONSIN



LOCATION OF LANDMARK

VERNON COUNTY COORDINATE SYSTEM	
Northing	186823.805
Easting	677905.933
Datum	NAD 1983 (2011)
Elevation	
Datum	
TYPE OF LANDMARK:	
Set 1 1/4" x 18" Iron Rod	
BEARINGS ARE REFERENCED TO:	
Vernon County Coordinates (Survey Grade)	

Witnesses: Laurence E Johns III  
 Taylor Voegeli

Date: 13 July 2020

Describe or show any material discrepancy between the location of the restored corner and that of the corner previously restored or re-established.

Wm Kowner established this corner, in September 1885. During a survey in Section 19. He showed he established the center and marked one tie.

Christopher Fechner was at this corner, in July 2019, during a survey in Section 28. He shows he set a mag nail.

Describe any record evidence, monument evidence, testimonial evidence or any other material evidence you considered and whether the monument was found or restored through acceptance of an obliterated evidence location.

No bearing trees of record were located.

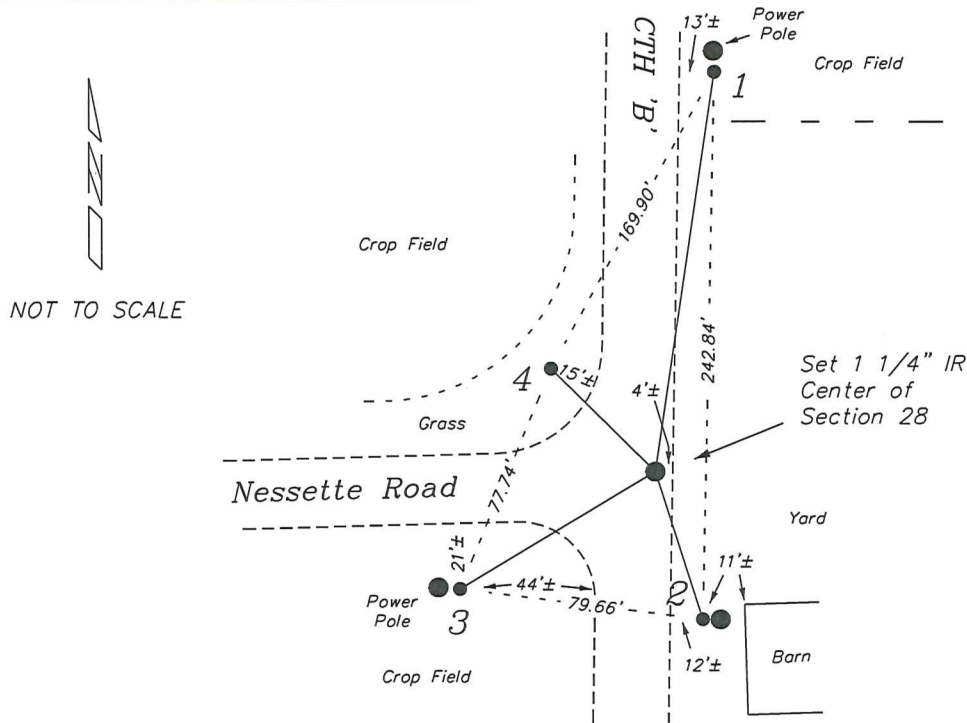
I found the mag nail set by Fechner. He set it at the intersection of quarter lines.

The only occupation, other than roadways, is a fence corner at the '40' corner to the East. That occupation supports this location.

I replaced the mag nail with an 1 1/4" iron rod for a better stability. I also placed ties since it is located in a intersection of roadways. I did not place a warning sign due to it be in front of a mowed yard.

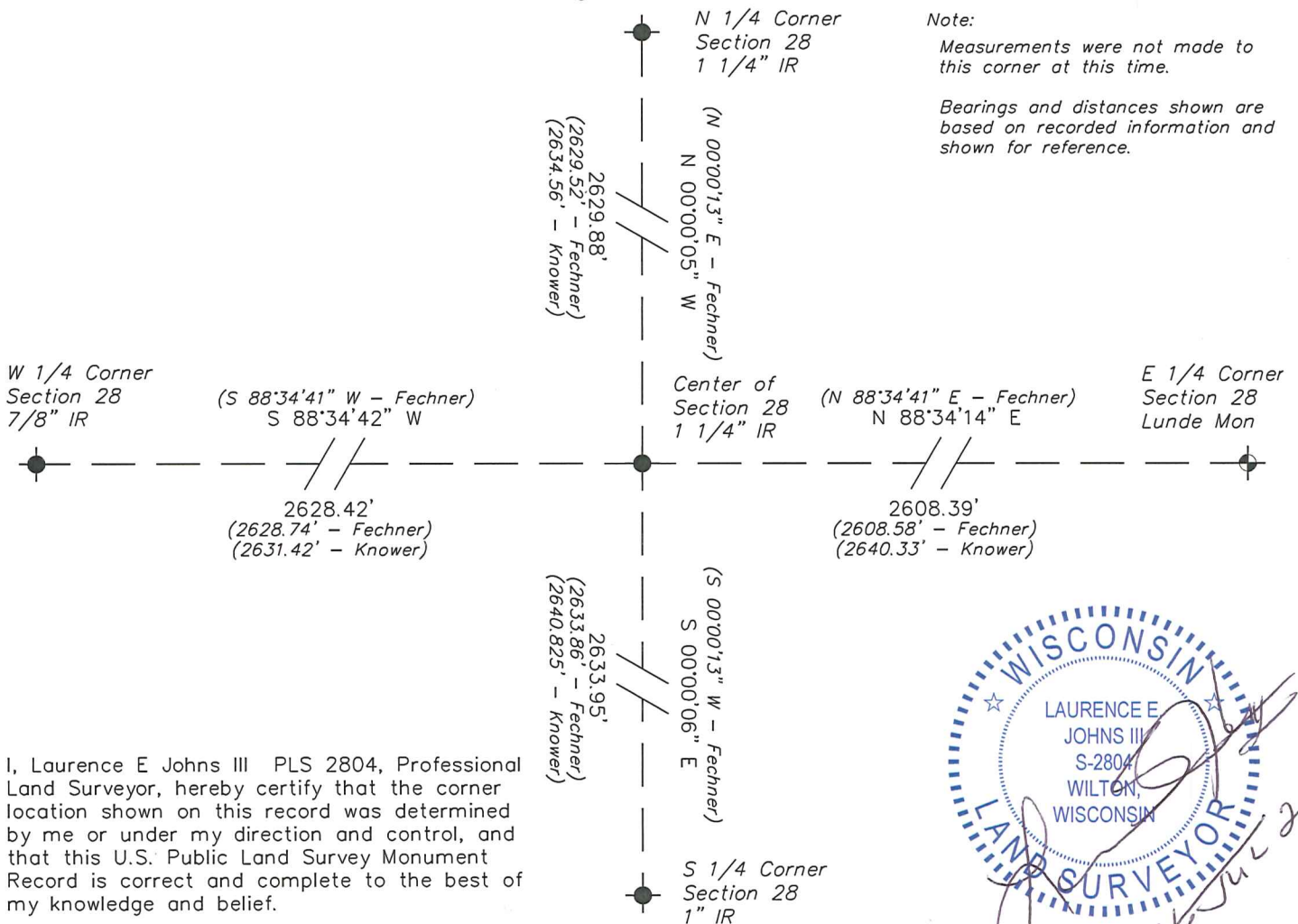
# RECORD OF DURABLE WITNESS MONUMENTS

NO	DESCRIPTION	BEARING	DISTANCE
1	Set 3/4" x 18" Iron Rod 2' South of a Power Pole	N 06°04'46" E	195.64'
2	Set 3/4" x 18" Iron Rod 2' West of a Power Pole	S 17°48'28" E	50.67'
3	Set 3/4" x 18" Iron Rod 2' East of Power Pole 9505MM1	S 58°58'20" W	74.14'
4	Set 3/4" x 18" Iron Rod In Grass Area	N 45°12'34" W	47.78'



## PLAN VIEW DRAWING OF REFERENCE TIES

Map Showing Distance And Direction To Other Public Land Survey Corners Used For Re-Establishing The Corner



I, Laurence E Johns III PLS 2804, Professional Land Surveyor, hereby certify that the corner location shown on this record was determined by me or under my direction and control, and that this U.S. Public Land Survey Monument Record is correct and complete to the best of my knowledge and belief.

