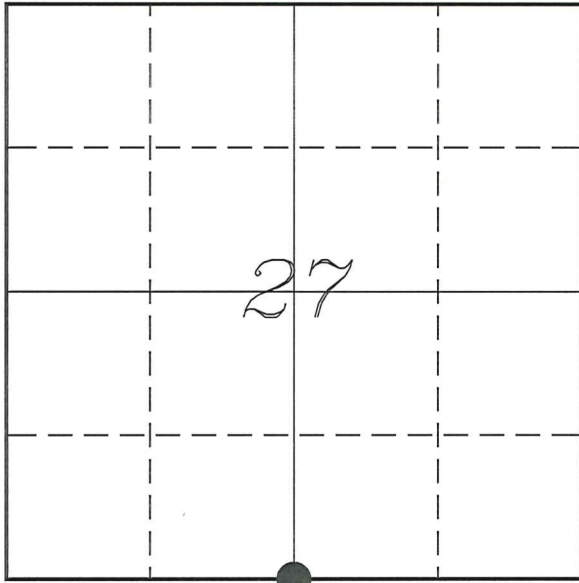


U. S. PUBLIC LAND SURVEY MONUMENT RECORD

SECTION 27, T14N, R5W, TOWN OF COON
 VERNON COUNTY, WISCONSIN



LOCATION OF LANDMARK

| | |
|---|-----------------|
| VERNON COUNTY COORDINATE SYSTEM | |
| Northing | 184314.162 |
| Easting | 683180.631 |
| Datum | NAD 1983 (2011) |
| Elevation | |
| Datum | |
| TYPE OF LANDMARK: | |
| Set 1 1/4" x 18" Iron Rod | |
| BEARINGS ARE REFERENCED TO: | |
| Vernon County Coordinates (Survey Grade) | |

Witnesses: Laurence E Johns III
 Taylor Voegeli

Date: 13 July 2020

Describe or show any material discrepancy between the location of the restored corner and that of the corner previously restored or re-established.

Henry Maddin established this corner in December 1846.

Wm Knower was at this corner, in January 1866, during a survey in Section 27. He shows that he found the government corner.

Curtis Cummer was at this corner, in August 2003, during a survey in Section 34. He shows he set a railroad spike on line between corners and prepared a tie sheet.

Christopher Fechner was at this corner, in May 2018, during a survey in Section 34. He shows he found a railroad spike

Describe any record evidence, monument evidence, testimonial evidence or any other material evidence you considered and whether the monument was found or restored through acceptance of an obliterated evidence location.

No bearing trees of record were located.

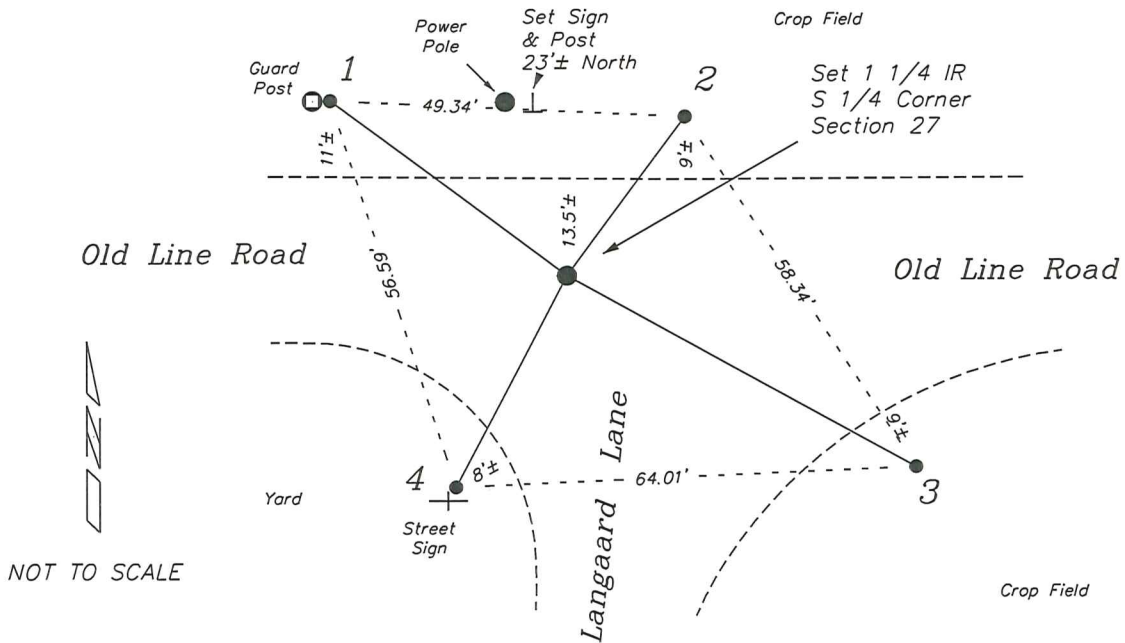
Found the railroad spike set by Cummer and two of his ties.

I did not find any immediate evidence that disagreed with the location of this monument.

I accepted the location of the monument as the best available evidence of the original government corner and replaced it with an 1 1/4" iron rod for more stability.

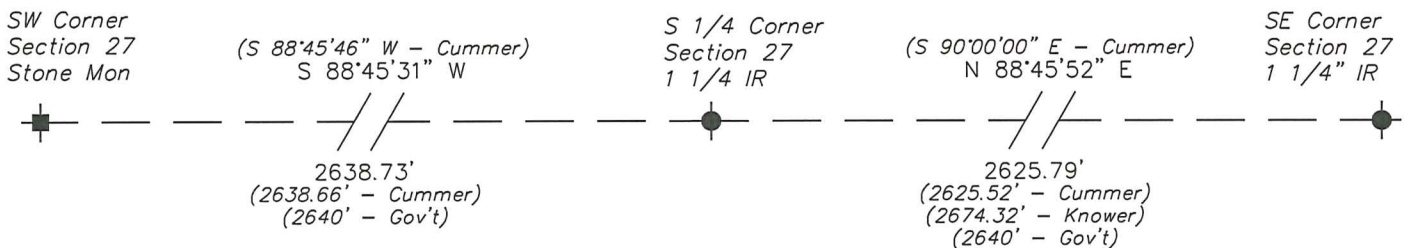
RECORD OF DURABLE WITNESS MONUMENTS

| NO | DESCRIPTION | BEARING | DISTANCE |
|----|--|----------------------------|--------------------|
| 1 | Set 3/4" x 18" Iron Rod East Side of Phone Box Guard Post | N 53°26'20" W | 40.97' |
| 2 | Set 3/4" x 18" Iron Rod South Side of Field Edge | N 36°33'43" E | 27.50' |
| 3 | Existing 3/4" Iron Rod | S 61°12'06" E (S 60° E) | 55.30' (55.48') |
| 4 | Existing 3/4" Iron Rod North Side of Langaard Road Sign | S 27°45'05" W (S 28° W) | 33.26' (33.18') |



PLAN VIEW DRAWING OF REFERENCE TIES

Map Showing Distance And Direction To Other Public Land Survey
Corners Used For Re-Establishing The Corner



I, Laurence E Johns III PLS 2804, Professional Land Surveyor, hereby certify that the corner location shown on this record was determined by me or under my direction and control, and that this U.S. Public Land Survey Monument Record is correct and complete to the best of my knowledge and belief.



RECEIVED
 AUG 26 2003
 BY: _____

Vernon County Certified U.S. Public Land Survey Monument Record

INSTRUCTIONS: THIS RECORD SHALL SHOW THE LOCATION OF THE CORNER AND SHALL INCLUDE ALL OF THE FOLLOWING ELEMENTS (A-I)

(A) IDENTIFY THE CORNER BY REFERENCE TO THE U.S. PUBLIC LAND SURVEY SYSTEM

■ = CORNER MONUMENT RESTORED

WITNESSES TO CORNER LOCATION:

- 1) Curt Cummer
- 2) Chad Crook
- 3) Brenda Crook

STATE PLANE COORDINATES (WISCONSIN SOUTH ZONE)

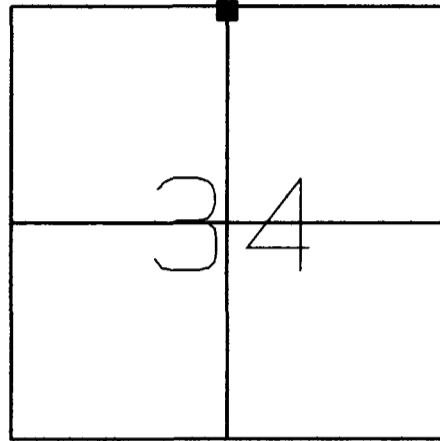
NORTHING:

EASTING:

VERNON COUNTY COORDINATES

NORTHING: 19 62

EASTING: 69 68



SECTION 34, TOWN 14 NORTH, RANGE 5 WEST
 Coon Township

(B) DESCRIBE ANY RECORD EVIDENCE, MONUMENT EVIDENCE, OCCUPATIONAL EVIDENCE, TESTIMONIAL EVIDENCE OR ANY OTHER MATERIAL EVIDENCE YOU CONSIDERED, AND WHETHER THE MONUMENT WAS FOUND OR PLACED.

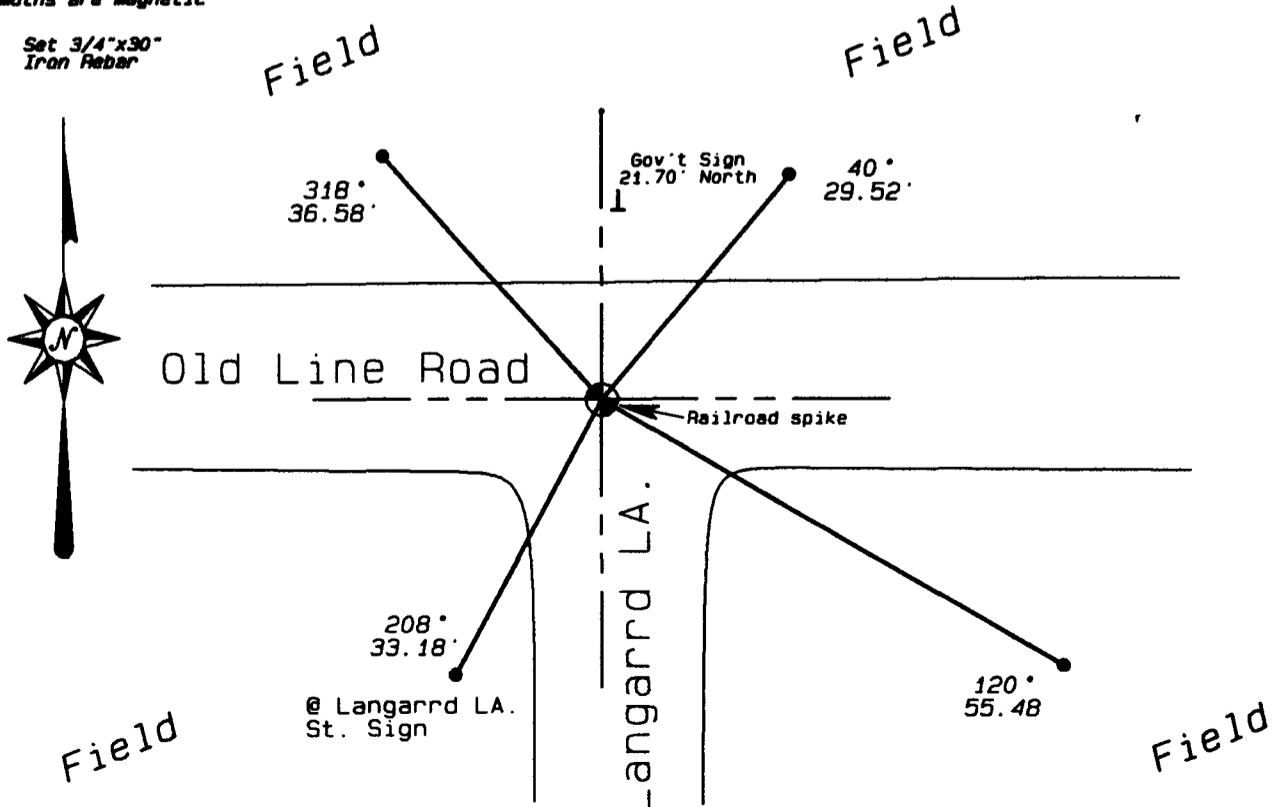
Placed Railroad spike on line between adjoining section corners using the occupied East line of the Southwest Quarter of the Southeast Quarter of section 27 to establish the East-West location.

(C) IN THE PLAN VIEW DRAWING BELOW, PROVIDE REFERENCE TIES TO AT LEAST 4 WITNESS MONUMENTS OR, IF THE LOCATION IS WITHIN A MUNICIPALITY, TO AT LEAST 2 WITNESS MONUMENTS. (WITNESS MONUMENTS SHALL BE MADE OF CONCRETE, NATURAL STONE, IRON, OR OTHER EQUALLY DURABLE MATERIAL.) DESCRIBE WITNESS MONUMENTS.

(D) SHOW A PLAN VIEW DRAWING, DEPICTING THE RELEVANT MONUMENTS AND REFERENCE TIES, WHICH IS SUFFICIENTLY DETAILED TO ENABLE ACCURATE RELOCATION OF THE CORNER MONUMENT IF IT IS DISTURBED.

Azimuths are magnetic

- Set 3/4"x30" Iron Rebar



(E) DESCRIBE ANY MATERIAL DISCREPANCY BETWEEN THE LOCATION OF THE CORNER AS RESTORED OR REESTABLISHED AND THE LOCATION OF THAT CORNER AS PREVIOUSLY RESTORED OR REESTABLISHED BY DISTANCE AND DIRECTION. SHOW THE DISCREPANCY ON THE PLAN VIEW DRAWING UNDER (D), ABOVE. SHOW THE DISTANCES BETWEEN THE CORNER AS PREVIOUSLY RESTORED OR REESTABLISHED AND (1) THE CORNER AS RESTORED OR REESTABLISHED, AND (2) TO AT LEAST 2 OF THE WITNESS MONUMENTS AS SHOWN ON THE DRAWING IN (D), ABOVE.

N / A

(F) WAS THE CORNER RESTORED THROUGH ACCEPTANCE OF (1) AN OBLITERATED EVIDENCE LOCATION, OR (2) A FOUND PERPETUATED LOCATION?

(1)

(G & H) WAS THE CORNER REESTABLISHED THROUGH LOST CORNER PROPORTIONATE METHODS? IF SO SHOW THE METHOD, INCLUDING THE DIRECTION AND DISTANCES TO THE OTHER PUBLIC LAND SURVEY CORNERS USED AS EVIDENCE OR USED FOR PROPORTIONING IN DETERMINING THE CORNER LOCATION.

No

(I) I, Curtis J. Cummer, CERTIFY THAT THE LOCATION SHOWN ON THIS RECORD WAS DETERMINED BY ME OR UNDER MY DIRECTION AND CONTROL AND THAT THIS U.S. PUBLIC LAND SURVEY MONUMENT RECORD IS CORRECT AND COMPLETE TO THE BEST OF MY KNOWLEDGE AND BELIEF.


SIGNATURE _____ DATE _____
8/25/03

LAND SURVEYOR SEAL

