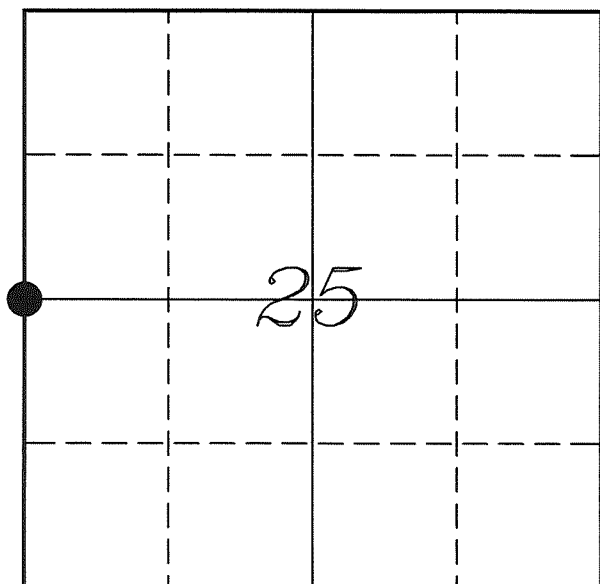

U. S. PUBLIC LAND SURVEY MONUMENT RECORD

SECTION 25, T14N, R5W, TOWN OF COON VERNON COUNTY, WISCONSIN



LOCATION OF LANDMARK

Crew: Laurence E Johns III
Larry Handschy

Date: 23 May 2010

| VERNON COUNTY COORDINATE SYSTEM | |
|---------------------------------|-----------------|
| Northing | 187075.268 |
| Easting | 691080.627 |
| Datum | NAD 1983 (2007) |
| Elevation | |
| Datum | |
| TYPE OF LANDMARK: | |
| Set 1 1/4" x 18" Iron Rod | |
| BEARINGS ARE REFERENCED TO: | |
| Vernon County Coordinates | |

Describe any record evidence, monument evidence, testimonial evidence or any other material evidence you considered and whether the monument was found or restored through acceptance of an obliterated evidence location.

Volden Road runs North & South through this area, no evidence of the original mound and pit.

Found Dederich's Lunde in the West ditch line of the road.

Could not located Harding's RR Spike, but its location computes out to be in the center of the roadway.

There is no recorded evidence of the origin of the 3/8" Spike found by Dederich, but it is in a location that could be used as a traverse control point.

Distances on Knower's survey indicates that the corner should be further to the East than Dederich's corner.

After further measurements, I found that a straight line between the NW & SW Corners of Section 25 matches much closer to Knower's distances, is located in the center of the roadway and does seem to match the location of Harding's corner well.

After much thought, I disregarded the location determined by Dederich and placed a 1 1/4" Iron Rod at the straight line and East of the fence line. This location is the best fit to match Knower's survey and the best available evidence of the original government corner.

By request of the county, I removed the brass cap from the Lunde Monument, leaving the 2" Iron Pipe that it was attached to.

Describe or show any material discrepancy between the location of the restored corner and that of the corner previously restored or re-established.

Alfred Brown established this corner in October 1846. He set a mound and pit, no bearing trees.

Wm Knower was at this corner, in October 1885, during surveys of Section 26 & 25. He found the government corner and renewed the tie.

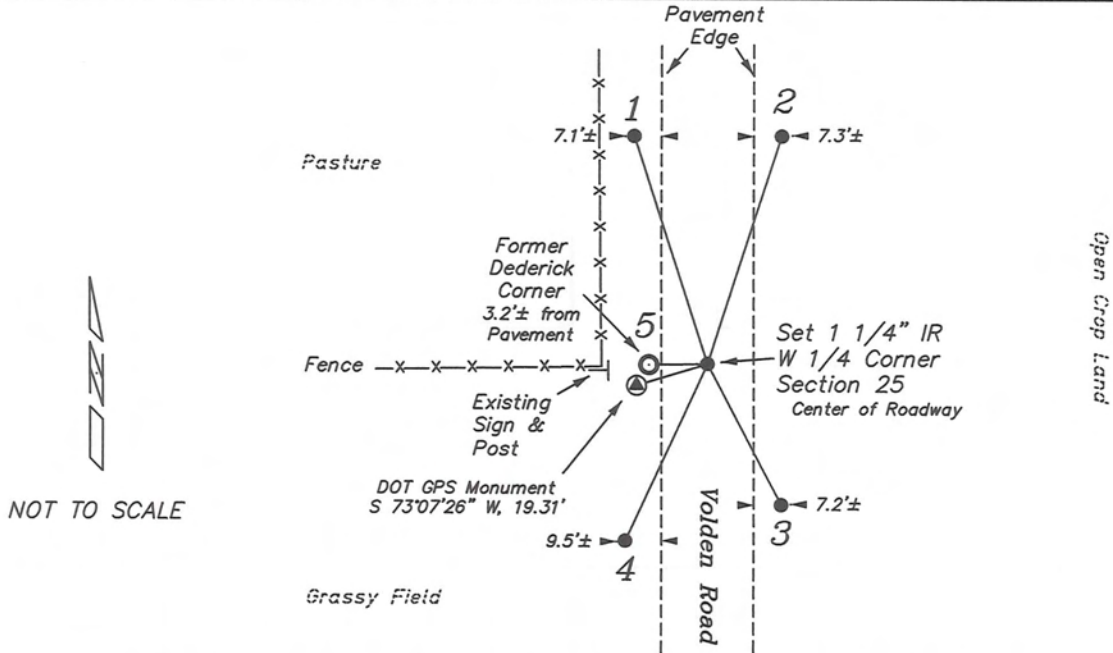
F Curtis Crook was at this corner, in February 1980, during a survey in Section 24. He found a RR Spike.

Patrick Dederich was at this corner, in December 2003, during a re-monumentation project. He shows that he found a 3/8" x 12" Spike with ribbon and replaced it with a Lunde Monument and prepared a Tie Sheet.

Michael Harding was at this corner, in September 2007, during a survey in Section 26. He shows that he sets a RR Spike.

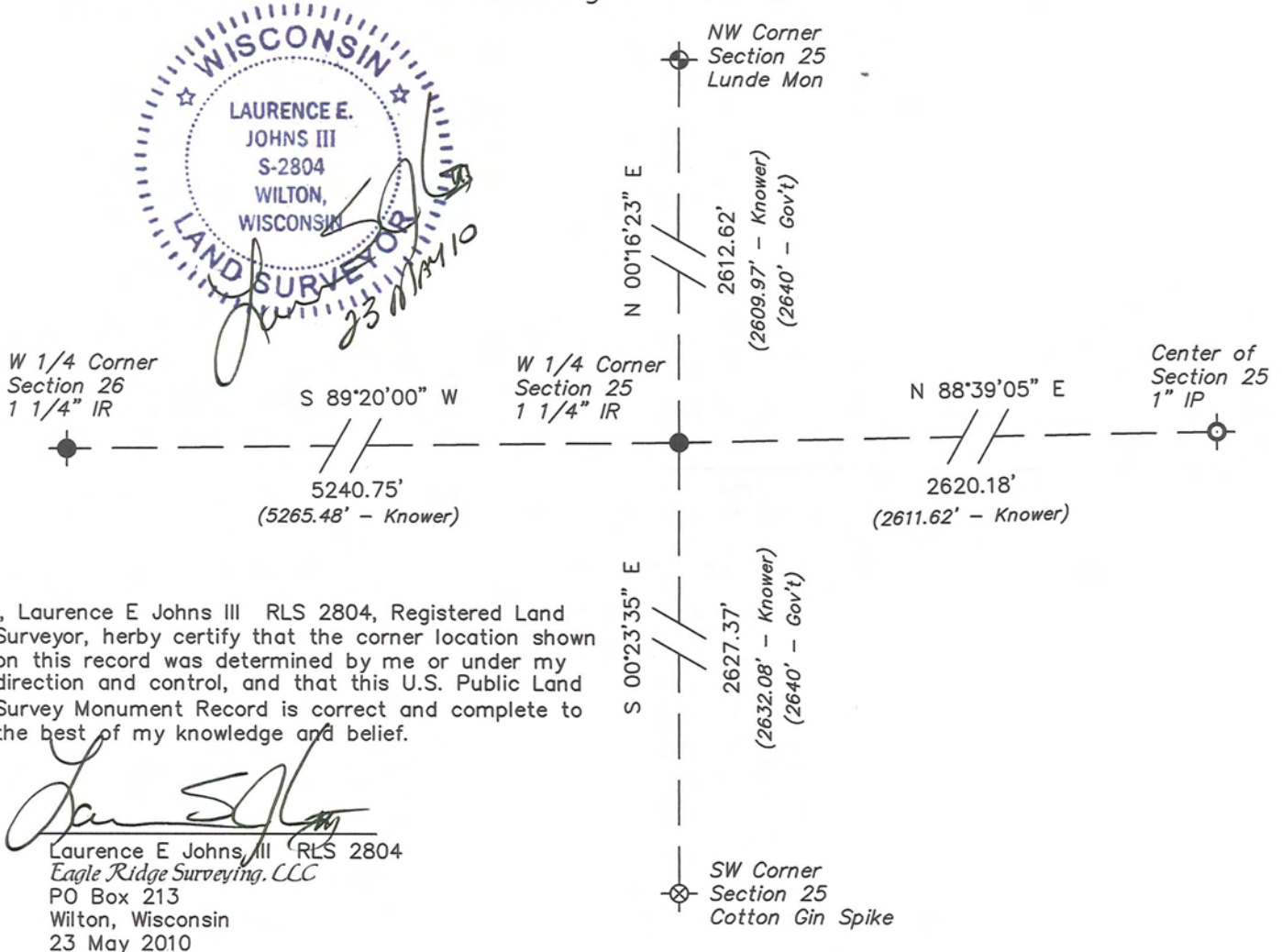
RECORD OF DURABLE WITNESS MONUMENTS

| NO | DESCRIPTION | BEARING | DISTANCE |
|----|--|---------------|----------|
| 1 | Existing Set 3/4" Iron Rod Tie from Dederich Tie Sheet | N 17°52'19" W | 62.25' |
| 2 | Existing Set 3/4" Iron Rod Tie from Dederich Tie Sheet | N 18°01'39" E | 62.29' |
| 3 | Existing Set 3/4" Iron Rod Tie from Dederich Tie Sheet | S 27°36'15" E | 41.30' |
| 4 | Existing Set 3/4" Iron Rod Tie from Dederich Tie Sheet | S 25°01'13" W | 50.73' |
| 5 | Existing 2" Iron Pipe (Previous Lunde with cap removed) | S 89°09'34" W | 15.27' |



PLAN VIEW DRAWING OF REFERENCE TIES

Map Showing Distance And Direction To Other Public Land Survey
Corners Used For Re-Establishing The Corner



I, Laurence E Johns III RLS 2804, Registered Land Surveyor, hereby certify that the corner location shown on this record was determined by me or under my direction and control, and that this U.S. Public Land Survey Monument Record is correct and complete to the best of my knowledge and belief.

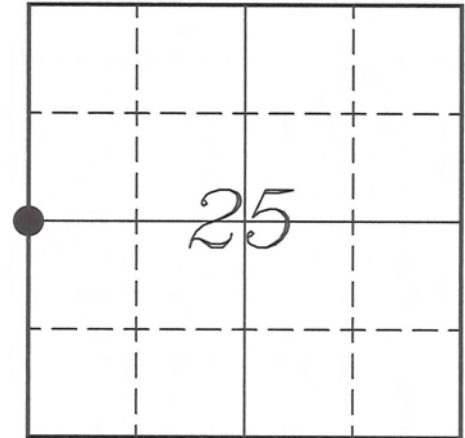
Laurence E Johns, III RLS 2804
 Eagle Ridge Surveying, LLC
 PO Box 213
 Wilton, Wisconsin
 23 May 2010

VERNON COUNTY COORDINATE SUBMISSION FORM
 "As An Addendum To"
VERNON COUNTY
CERTIFIED U.S. PUBLIC LAND SURVEY MONUMENT RECORD

INSTRUCTIONS: THIS RECORD FORM SHOULD BE USED WHEN COORDINATES ARE PROVIDED FOR A PUBLIC LAND SURVEY CORNER AND SHALL INCLUDE ALL OF THE FOLLOWING ELEMENTS (A-D)

(A) IDENTIFY THE CORNER BY REFERENCE TO THE U.S. PUBLIC LAND SURVEY SYSTEM IN DIAGRAM AT RIGHT

● = CORNER MONUMENT



(B) COORDINATES:

GEOGRAPHIC (Degrees Minutes Seconds)

LATITUDE: 43° 39' 37.2139" N

LONGITUDE: 90° 55' 49.4139" W

ELLIPSOID HT (m): _____

DATUM: NAD 1983 (2007)

GEOID03 ADJ: -32.717

ORTHOMETRIC HT: _____

VERNON COUNTY (U.S. FEET)

Coord Quality (+/-)

NORTHING (Y): 187075.268 _____

EASTING (X): 691080.627 _____

GPS METHOD USED TO COMPUTE COORDINATES (check as applicable)

- RTK Observations Static Baselines OPUS-RS Solution OPUS-S Solution
 Combination of GPS Observations & Conventional Procedures

Was a Least Squares Adjustment Used to Compute Coordinates? Yes / No

BASE CONTROL USED FOR COORDINATE COMPUTATION

| Station Name | Station Coordinates | Date/Time |
|-------------------|--|---------------------------|
| <u>COON E GPS</u> | <u>43° 39' 14.3735" N 90° 54' 51.0897" W</u> <u>N - 184755.295 E - 695364.636</u> | <u>05/23/2010 - 13:51</u> |
| <u>Same</u> | _____ | <u>05/29/2010 - 10:29</u> |

(C) REASON FOR COORDINATES SUBMITTAL (check one)

- Being Filed With a New U.S. PLS Monument Record
 To Correct the Coordinates Listed on a Previously Filed PLS Monument Record
 To Provide Coordinates for Previously Filed PLS Monument Record without Coordinates
 To Provide Supplemental Coordinates for a Previously Filed PLS Monument Record


MOST RECENT PLS MONUMENT RECORD DATE:

R.L.S. WHO CREATED MOST RECENT PLS MONUMENT RECORD:

(D) AGENT(S) PERFORMING GPS OBSERVATIONS & COORDINATE COMPUTATION

- 1) LAURENCE E JOHNS III
 2) _____

I, LAURENCE E JOHNS III RLS 2804, REGISTERED LAND SURVEYOR, HEREBY CERTIFY THAT THE COORDINATES PROVIDED ON THIS RECORD WERE DETERMINED BY ME OR UNDER MY DIRECTION AND CONTROL AND THAT THIS COORDINATE SUBMISSION FORM IS CORRECT AND COMPLETE TO THE BEST OF MY KNOWLEDGE AND BELIEF.


 Laurence E Johns III RLS 2804
 Eagle Ridge Surveying, LLC
 PO Box 213
 Wilton, Wisconsin
 29 May 2010



RECEIVED
 DEC 9 2003
 BY: *E. Jacobson*

VERNON COUNTY
 CERTIFIED U.S. PUBLIC LAND SURVEY MONUMENT RECORD

INSTRUCTIONS: THIS RECORD SHALL SHOW THE LOCATION OF THE CORNER AND SHALL INCLUDE ALL OF THE FOLLOWING ELEMENTS (A-I)

(A) IDENTIFY THE CORNER BY REFERENCE TO THE U.S. PUBLIC LAND SURVEY SYSTEM

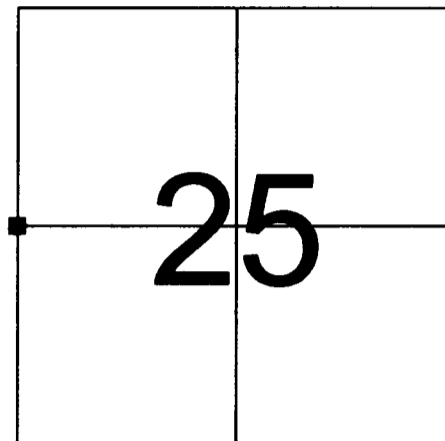
■ = CORNER MONUMENT RESTORED

WITNESSES TO CORNER LOCATION:

- 1) PATRICK J. DEDERICH
- 2) JOHN E. DEDERICH

VERNON COUNTY COORDINATES

NORTHING: 187,074.91
 EASTING: 691,065.44



SECTION 25, TOWN 14 NORTH, RANGE 5 WEST

(B) DESCRIBE ANY RECORD EVIDENCE, MONUMENT EVIDENCE, OCCUPATIONAL EVIDENCE, TESTIMONIAL EVIDENCE OR ANY OTHER MATERIAL EVIDENCE YOU CONSIDERED, AND WHETHER THE MONUMENT WAS FOUND OR PLACED.

NO RECENT RECORD EVIDENCE. FOUND 12" X 3/8" NAIL WITH RIBBON WHICH FIT WELL WITH ADJACENT CORNERS. REPLACED WITH LUNDE MONUMENT.

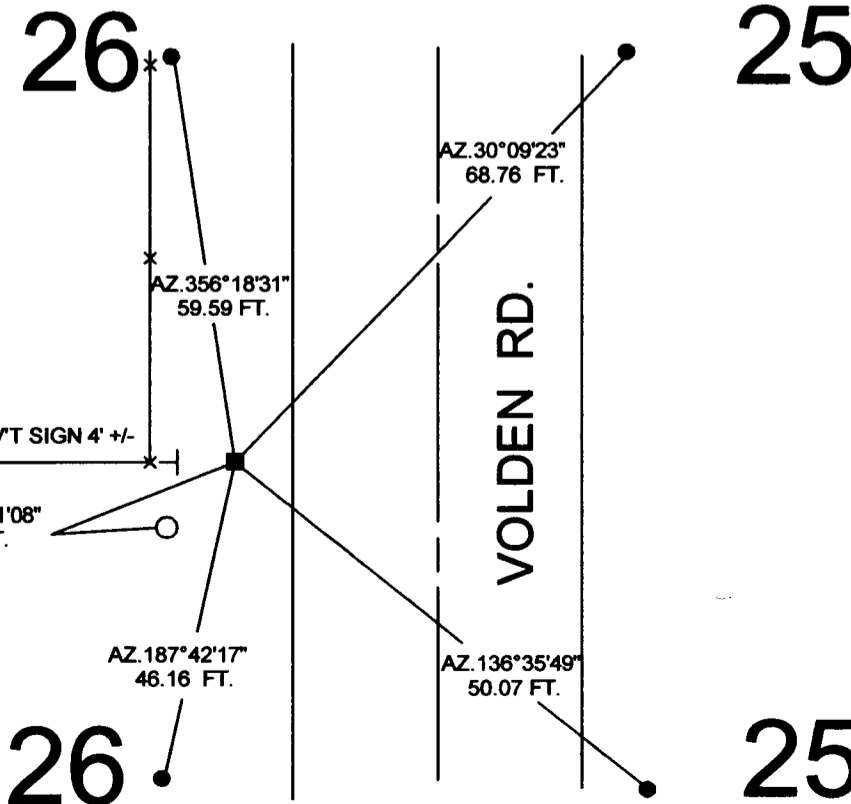
(C) IN THE PLAN VIEW DRAWING BELOW, PROVIDE REFERENCE TIES TO AT LEAST 4 WITNESS MONUMENTS OR, IF THE LOCATION IS WITHIN A MUNICIPALITY, TO AT LEAST 2 WITNESS MONUMENTS. (WITNESS MONUMENTS SHALL BE MADE OF CONCRETE, NATURAL STONE, IRON, OR OTHER EQUALLY DURABLE MATERIAL.) DESCRIBE WITNESS MONUMENTS.

(D) SHOW A PLAN VIEW DRAWING, DEPICTING THE RELEVANT MONUMENTS AND REFERENCE TIES, WHICH IS SUFFICIENTLY DETAILED TO ENABLE ACCURATE RELOCATION OF THE CORNER MONUMENT IF IT IS DISTURBED.

LEDGEND

- SET 3/4" X 24" IRON ROD
- LUNDE MONUMENT SET
- ⊥ 2" CHANNEL POST W/GOV'T SIGN
- WDOT GPS MONUMENT

NOT TO SCALE



BEARINGS ARE BASED ON THE VERNON COUNTY COORDINATE SYSTEM NAD 83/91

(E) DESCRIBE ANY MATERIAL DISCREPANCY BETWEEN THE LOCATION OF THE CORNER AS RESTORED OR REESTABLISHED AND THE LOCATION OF THAT CORNER AS PREVIOUSLY RESTORED OR REESTABLISHED BY DISTANCE AND DIRECTION. SHOW THE DISCREPANCY ON THE PLAN VIEW DRAWING UNDER (D), ABOVE. SHOW THE DISTANCES BETWEEN THE CORNER AS PREVIOUSLY RESTORED OR REESTABLISHED AND (1) THE CORNER AS RESTORED OR REESTABLISHED, AND (2) TO AT LEAST 2 OF THE WITNESS MONUMENTS AS SHOWN ON THE DRAWING IN (D), ABOVE.

(F) WAS THE CORNER RESTORED THROUGH ACCEPTANCE OF (1) AN OBLITERATED EVIDENCE LOCATION, OR (2) A FOUND PERPETUATED LOCATION?


(2) A FOUND PERPETUATED LOCATION.

(G & H) WAS THE CORNER REESTABLISHED THROUGH LOST CORNER PROPORTIONATE METHODS? IF SO SHOW THE METHOD, INCLUDING THE DIRECTIONS AND DISTANCES TO OTHER PUBLIC LAND SURVEY CORNERS USED AS EVIDENCE OR USED FOR PROPORTIONING IN DETERMINING THE CORNER LOCATION.

NO

AFFIX LAND SURVEYOR SEAL

(I) I, PATRICK J. DEDERICH CERTIFY THAT THE LOCATION SHOWN ON THIS RECORD WAS DETERMINED BY ME OR UNDER MY DIRECTION AND CONTROL AND THAT THIS U.S. PUBLIC LAND SURVEY MONUMENT RECORD IS CORRECT AND COMPLETE TO THE BEST OF MY KNOWLEDGE AND BELIEF.


SIGNATURE

12/09/2003
DATE

