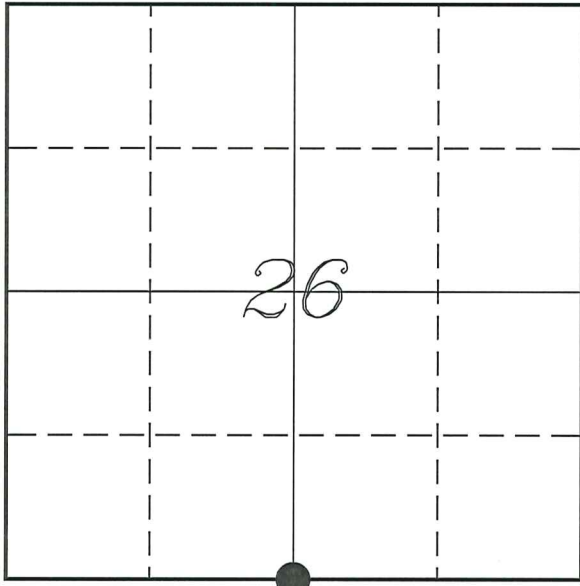


U. S. PUBLIC LAND SURVEY MONUMENT RECORD

SECTION 26, T14N, R5W, TOWN OF COON
VERNON COUNTY, WISCONSIN



LOCATION OF LANDMARK

VERNON COUNTY COORDINATE SYSTEM	
Northing	184403.970
Easting	688444.827
Datum	NAD 1983 (2011)
Elevation	
Datum	
TYPE OF LANDMARK:	
Set 1 1/4" x 18" Iron Rod	
BEARINGS ARE REFERENCED TO:	
Vernon County Coordinates (Survey Grade)	

Witnesses: Laurence E Johns III

Date: 27 August 2020

Describe or show any material discrepancy between the location of the restored corner and that of the corner previously restored or re-established.

A L Brown established this corner in October 1846.

Wn Knower was at this corner, in October 1885, during a survey in Section 26. He does not show this corner as found or lost.

F Curtis Crook was at this corner, in October 2002, during a survey in Section 35. He shows that he set a 3/4" iron rod 8' North of an existing unknown spike because it matched occupation better. He prepared a tie sheet

Jay Adams was at this corner, in December 2016, during a survey in Section 26. He shows he found a 3/4" iron rod.

Describe any record evidence, monument evidence, testimonial evidence or any other material evidence you considered and whether the monument was found or restored through acceptance of an obliterated evidence location.

No bearing trees of record were located.

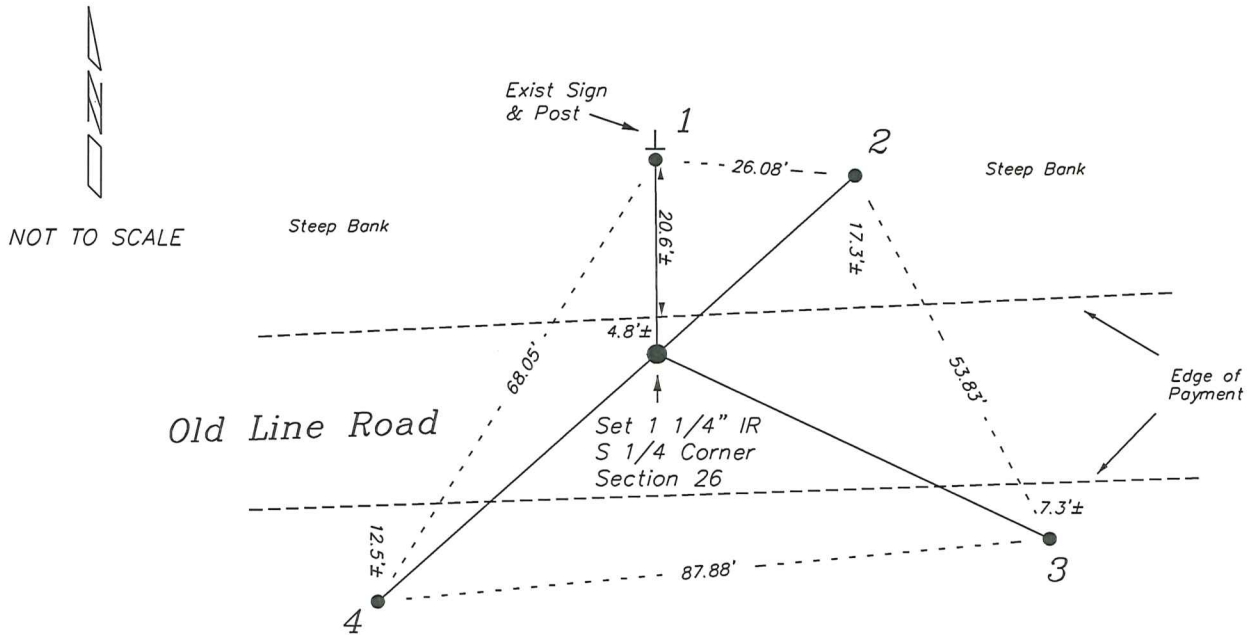
I found the 3/4" iron rod set by Crook, it is located 5.3' South and 0.2' East of the split between section corners. It also lines up with occupation to the North and South.

Occupation appears to agree with Knower's survey and with the government notes.

I accepted the location of the 3/4" iron rod and since it was up about 4 inches and bent over by snow plows, I replaced it with an 1 1/4" iron rod.

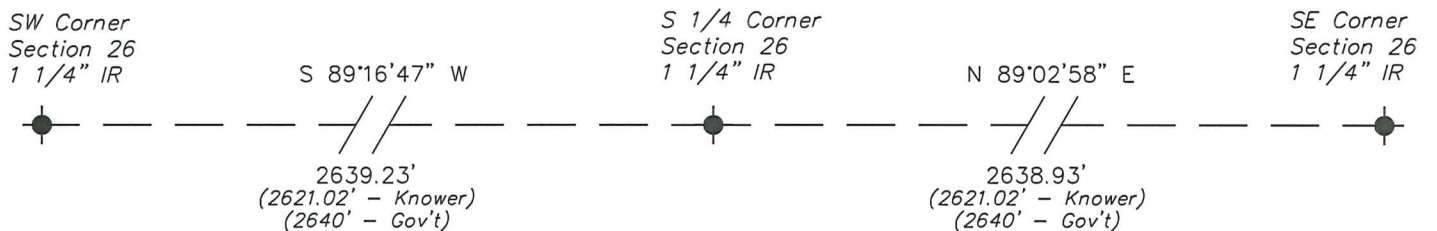
RECORD OF DURABLE WITNESS MONUMENTS

NO	DESCRIPTION	BEARING	DISTANCE
1	Existing 3/4" Iron Rod North Side of Warning Sign	N 00°30'28" W (N 00°07'00" E)	25.41' (25.32')
2	Existing 3/4" Iron Rod On Side Bank	N 47°49'23" E (N 48°28'03" E)	34.77' (34.77')
3	Set 3/4" x 18" Iron Rod At Field Edge	S 64°49'00" E	56.60'
4	Existing 3/4" Iron Rod Top of Bank	S 48°17'58" W (S 48°35'00" W)	48.58' (48.53')



PLAN VIEW DRAWING OF REFERENCE TIES

Map Showing Distance And Direction To Other Public Land Survey
Corners Used For Re-Establishing The Corner



I, Laurence E Johns III PLS 2804, Professional Land Surveyor, hereby certify that the corner location shown on this record was determined by me or under my direction and control, and that this U.S. Public Land Survey Monument Record is correct and complete to the best of my knowledge and belief.



VERNON COUNTY CERTIFIED U.S. PUBLIC LAND SURVEY MONUMENT RECORD

INSTRUCTIONS: THIS RECORD SHALL SHOW THE LOCATION OF THE CORNER AND SHALL INCLUDE ALL OF THE FOLLOWING ELEMENTS (A-I)

(A) IDENTIFY THE CORNER BY REFERENCE TO THE U.S. PUBLIC LAND SURVEY SYSTEM

N1/4 Section 35, T14N, R5W

☐ = CORNER MONUMENT RESTORED

WITNESSES TO CORNER LOCATION:

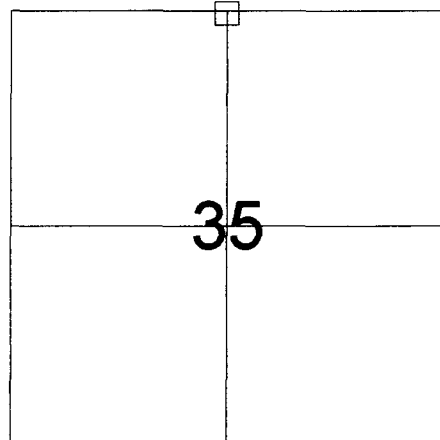
- 1) Curtis Crook
- 2) Chad Crook
- 3) Jim Ledman

STATE PLANE COORDINATES (WISCONSIN SOUTH ZONE)

NORTHING:
EASTING:

VERNON COUNTY COORDINATES

NORTHING: 184403.758
EASTING: 688444.925



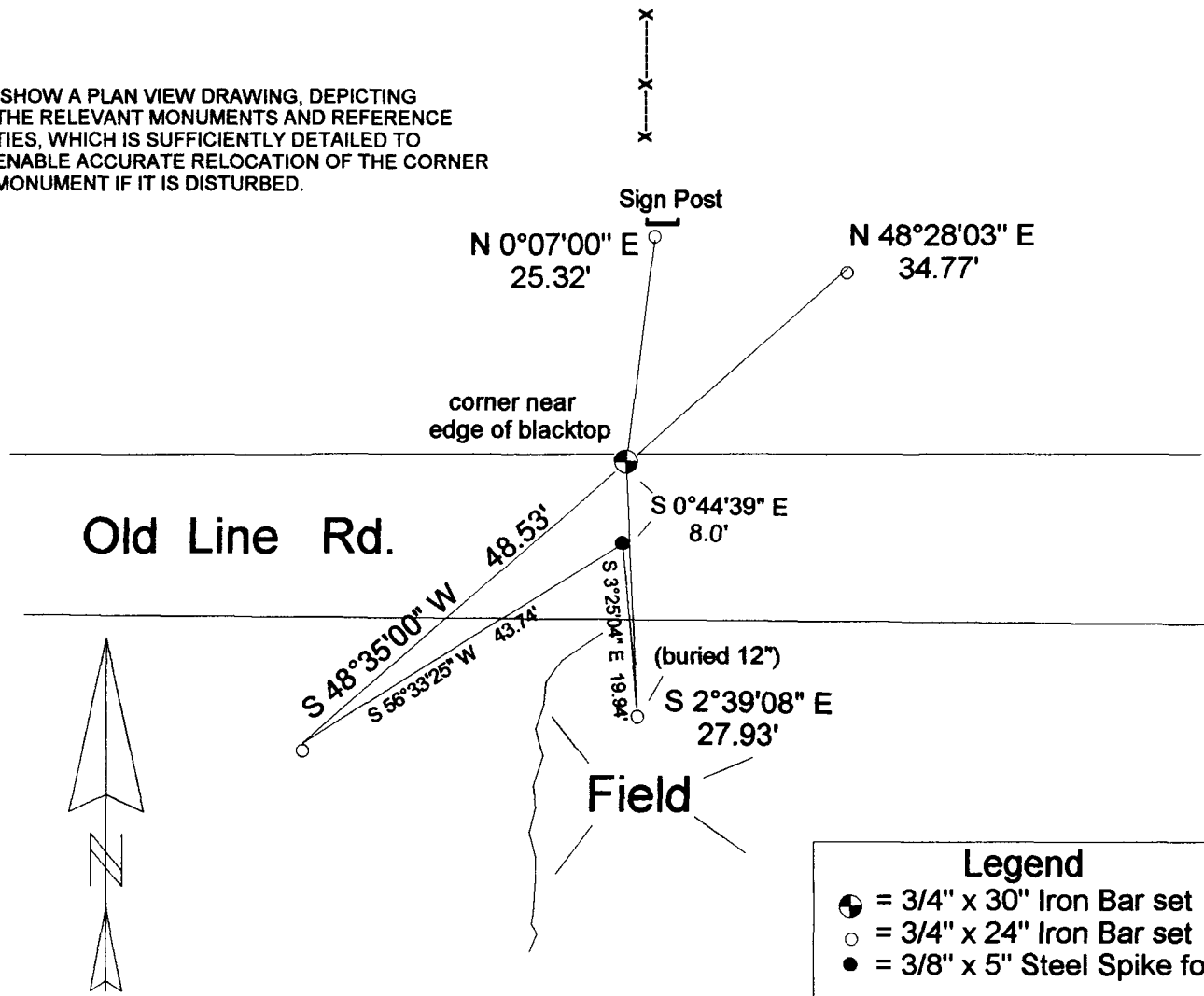
SECTION 35, TOWN 14 NORTH, RANGE 5 WEST

(B) DESCRIBE ANY RECORD EVIDENCE, MONUMENT EVIDENCE, OCCUPATIONAL EVIDENCE, TESTIMONIAL EVIDENCE OR ANY OTHER MATERIAL EVIDENCE YOU CONSIDERED, AND WHETHER THE MONUMENT WAS FOUND OR PLACED.

Found 3/8" x 5" steel spike in center of road. This road has been reconstructed in a very large "cut" area. Set 3/4" x 30" iron bar 8" North to match strong occupation in Section 26.

(C) IN THE PLAN VIEW DRAWING BELOW, PROVIDE REFERENCE TIES TO AT LEAST 4 WITNESS MONUMENTS OR, IF THE LOCATION IS WITHIN A MUNICIPALITY, TO AT LEAST 2 WITNESS MONUMENTS. (WITNESS MONUMENTS SHALL BE MADE OF CONCRETE, NATURAL STONE, IRON, OR OTHER EQUALLY DURABLE MATERIAL.) DESCRIBE WITNESS MONUMENTS.

(D) SHOW A PLAN VIEW DRAWING, DEPICTING THE RELEVANT MONUMENTS AND REFERENCE TIES, WHICH IS SUFFICIENTLY DETAILED TO ENABLE ACCURATE RELOCATION OF THE CORNER MONUMENT IF IT IS DISTURBED.



(E) DESCRIBE ANY MATERIAL DISCREPENCY BETWEEN THE LOCATION OF THE CORNER AS RESTORED OR REESTABLISHED AND THE LOCATION OF THAY CORNER AS PREVIOUSLY RESTORED OR REESTABLISHED BY DISTANCE AND DIRECTION. SHOW THE DISCREPENCY ON THE PLAN VIEW DRAWING UNDER (D), ABOVE. SHOW THE DISTANCES BETWEEN THE CORNER AS PREVIOUSLY RESTORED OR REESTABLISHED AND (1) THE CORNER AS RESTORED OR REESTABLISHED, AND (2) TO AT LEAST 2 OF THE WITNESS MONUMENTS AS SHOWN ON THE DRAWING IN (D), ABOVE.

(See sections "B" and "D" on reverse side)

(F) WAS THE CORNER RESTORED THROUGH ACCEPTANCE OF (1) AN OBLITERATED EVIDENCE LOCATION, OR (2) A FOUND PERPETUATED LOCATION?

A found Obliterated Evidence Location.

(G & H) WAS THE CORNER REESTABLISHED THROUGH LOST CORNER PROPORTIONED METHODS? IF SO SHOW THE METHOD, INCLUDING THE DIRECTION AND DISTANCES TO OTHER PUBLIC LAND SURVEY CORNERS USED AS EVIDENCE OR USED FOR PROPORTIONING IN DETERMINING THE CORNER LOCATION.

Not Applicable

AFFIX LAND SURVEYOR SEAL

(I) I, F. CURTIS CROOK, CERTIFY THAT THE LOCATION SHOWN ON THIS RECORD WAS DETERMINED BY ME OR UNDER MY DIRECTION AND CONTROL AND THAT THIS U.S. PUBLIC LAND SURVEY MONUMENT RECORD IS CORRECT AND COMPLETE TO THE BEST OF MY KNOWLEDGE AND BELIEF.

F. Curtis Crook 10-28-02
SIGNATURE DATE

