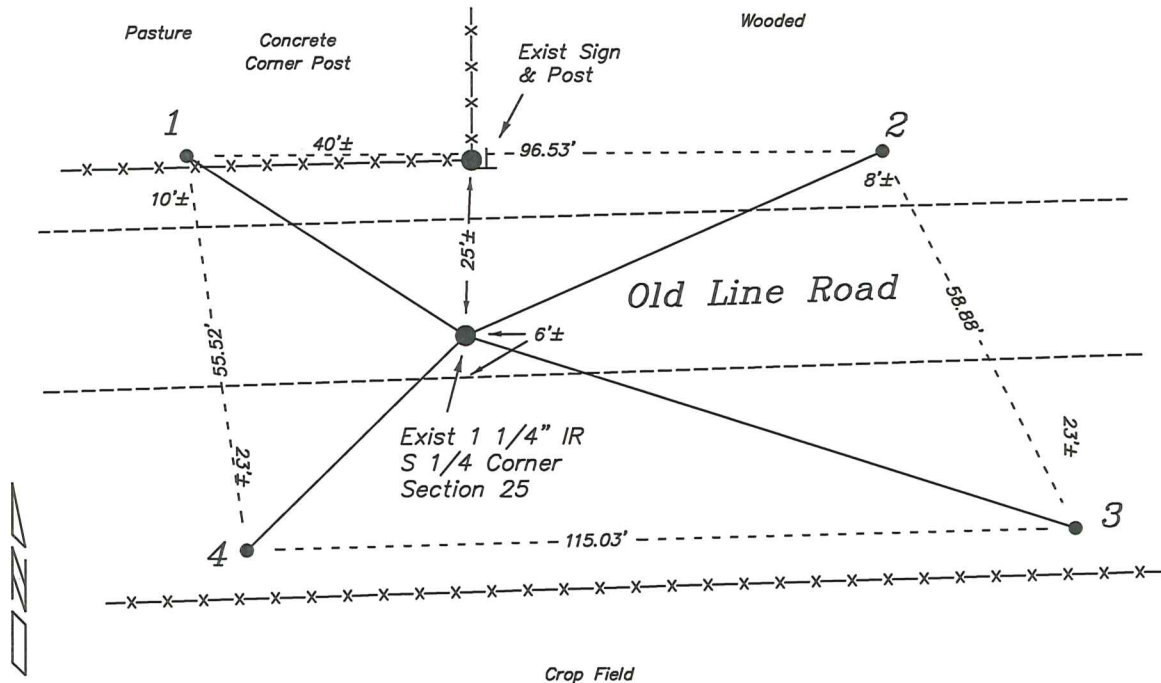




## RECORD OF DURABLE WITNESS MONUMENTS

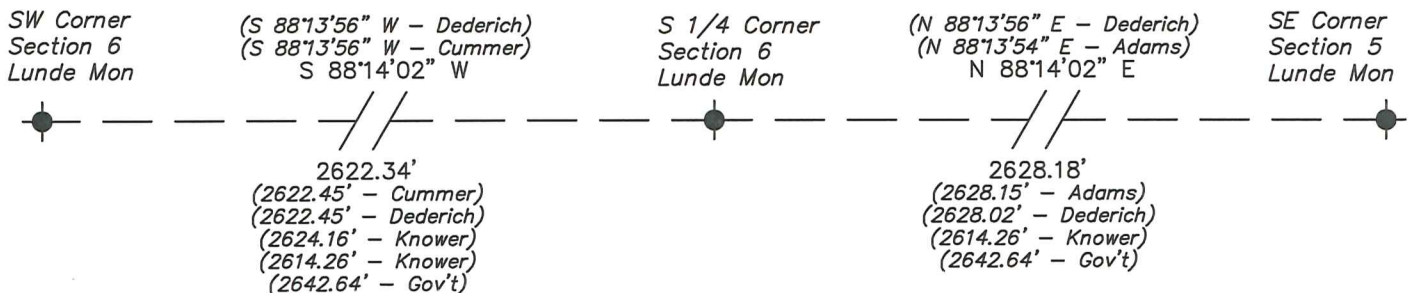
NO	DESCRIPTION	BEARING	DISTANCE
1	Existing 3/4" Iron Rod In Pasture, 2' North of Fence	(N 57°13'37" W N 57°00'22" W	(46.09') 46.12'
2	Existing 3/4" Iron Rod In Grass Shoulder	(N 66°08'29" E) N 66°07'23" E	(63.13') 63.26'
3	Existing 3/4" Iron Rod On Bank, 3' North of Fence	(S 72°18'15" E) S 72°24'46" E	(88.73') 88.79'
4	Existing 3/4" Iron Rod On Bank, 5' North of Fence	(S 45°27'44" W) S 45°33'13" W	(42.74') 42.52'



NOT TO SCALE

## PLAN VIEW DRAWING OF REFERENCE TIES

Map Showing Distance And Direction To Other Public Land Survey  
Corners Used For Re-Establishing The Corner



I, Laurence E Johns III PLS 2804, Professional Land Surveyor, hereby certify that the corner location shown on this record was determined by me or under my direction and control, and that this U.S. Public Land Survey Monument Record is correct and complete to the best of my knowledge and belief.

RECEIVED

DEC 9 2003

*G. Jacobson*

# VERNON COUNTY CERTIFIED U.S. PUBLIC LAND SURVEY MONUMENT RECORD

INSTRUCTIONS: THIS RECORD SHALL SHOW THE LOCATION OF THE CORNER AND SHALL INCLUDE ALL OF THE FOLLOWING ELEMENTS (A-I)

(A) IDENTIFY THE CORNER BY REFERENCE TO THE U.S. PUBLIC LAND SURVEY SYSTEM

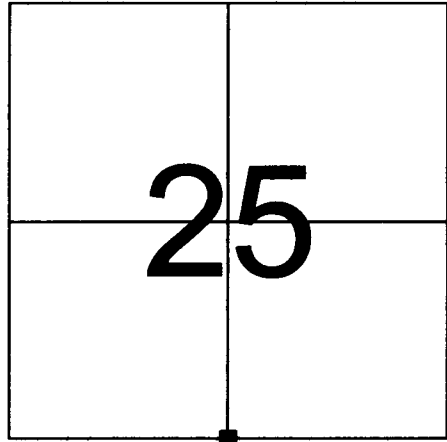
■ = CORNER MONUMENT RESTORED

WITNESSES TO CORNER LOCATION:

- 1) PATRICK J. DEDERICH
- 2) JOHN E. DEDERICH

VERNON COUNTY COORDINATES

NORTHING: 184,528.50  
EASTING: 693,704.66



SECTION 25, TOWN 14 NORTH, RANGE 5 WEST

(B) DESCRIBE ANY RECORD EVIDENCE, MONUMENT EVIDENCE, OCCUPATIONAL EVIDENCE, TESTIMONIAL EVIDENCE OR ANY OTHER MATERIAL EVIDENCE YOU CONSIDERED, AND WHETHER THE MONUMENT WAS FOUND OR PLACED.

NO RECENT RECORD EVIDENCE. SET ON LINE BETWEEN CORNERS TO THE EAST AND WEST AT AN EXTENSION OF FENCE TO THE NORTH.

(C) IN THE PLAN VIEW DRAWING BELOW, PROVIDE REFERENCE TIES TO AT LEAST 4 WITNESS MONUMENTS OR, IF THE LOCATION IS WITHIN A MUNICIPALITY, TO AT LEAST 2 WITNESS MONUMENTS. (WITNESS MONUMENTS SHALL BE MADE OF CONCRETE, NATURAL STONE, IRON, OR OTHER EQUALLY DURABLE MATERIAL.) DESCRIBE WITNESS MONUMENTS.

(D) SHOW A PLAN VIEW DRAWING, DEPICTING THE RELEVANT MONUMENTS AND REFERENCE TIES, WHICH IS SUFFICIENTLY DETAILED TO ENABLE ACCURATE RELOCATION OF THE CORNER MONUMENT IF IT IS DISTURBED.

### LEDGEND

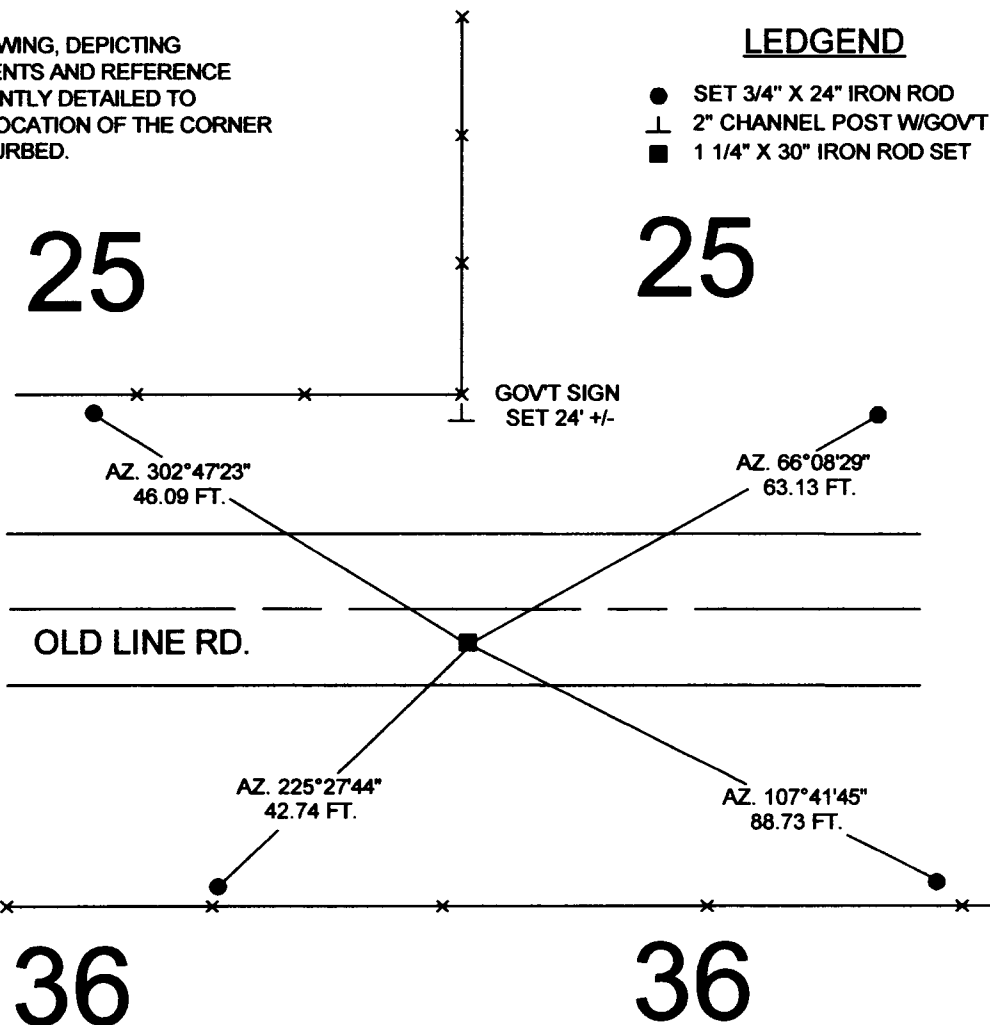
- SET 3/4" X 24" IRON ROD
- ⊥ 2" CHANNEL POST W/GOVT SIGN
- 1 1/4" X 30" IRON ROD SET

NOT TO SCALE



25

25



BEARINGS ARE BASED ON THE VERNON COUNTY COORDINATE SYSTEM NAD 83/91

36

36

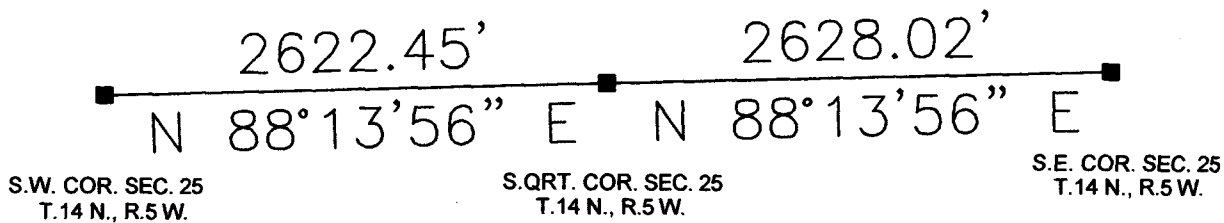
(E) DESCRIBE ANY MATERIAL DISCREPANCY BETWEEN THE LOCATION OF THE CORNER AS RESTORED OR REESTABLISHED AND THE LOCATION OF THAT CORNER AS PREVIOUSLY RESTORED OR REESTABLISHED BY DISTANCE AND DIRECTION. SHOW THE DISCREPANCY ON THE PLAN VIEW DRAWING UNDER (D), ABOVE. SHOW THE DISTANCES BETWEEN THE CORNER AS PREVIOUSLY RESTORED OR REESTABLISHED AND (1) THE CORNER AS RESTORED OR REESTABLISHED, AND (2) TO AT LEAST 2 OF THE WITNESS MONUMENTS AS SHOWN ON THE DRAWING IN (D), ABOVE.

(F) WAS THE CORNER RESTORED THROUGH ACCEPTANCE OF (1) AN OBLITERATED EVIDENCE LOCATION, OR (2) A FOUND PERPETUATED LOCATION?

(1) AN OBLITERATED EVIDENCE LOCATION.

(G & H) WAS THE CORNER REESTABLISHED THROUGH LOST CORNER PROPORTIONATE METHODS? IF SO SHOW THE METHOD, INCLUDING THE DIRECTIONS AND DISTANCES TO OTHER PUBLIC LAND SURVEY CORNERS USED AS EVIDENCE OR USED FOR PROPORTIONING IN DETERMINING THE CORNER LOCATION.

YES.



AFFIX LAND SURVEYOR SEAL

(I) I, PATRICK J. DEDERICH CERTIFY THAT THE LOCATION SHOWN ON THIS RECORD WAS DETERMINED BY ME OR UNDER MY DIRECTION AND CONTROL AND THAT THIS U.S. PUBLIC LAND SURVEY MONUMENT RECORD IS CORRECT AND COMPLETE TO THE BEST OF MY KNOWLEDGE AND BELIEF.

*Patrick J. Dederich*                      12/09/2003  
SIGNATURE                                      DATE

