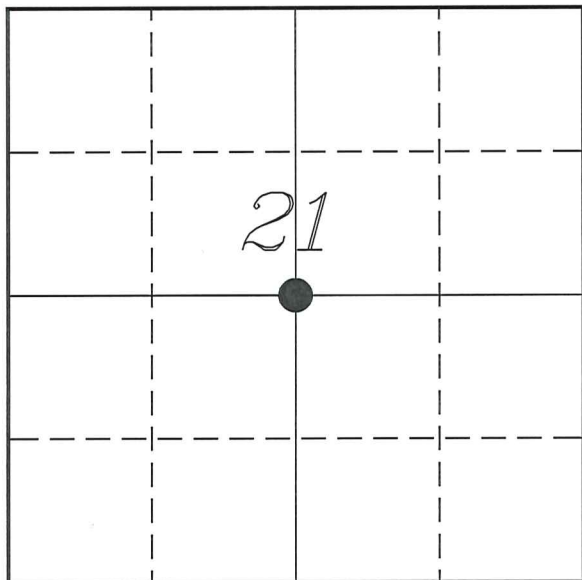


U. S. PUBLIC LAND SURVEY MONUMENT RECORD

SECTION 21, T14N, R5W, TOWN OF COON
VERNON COUNTY, WISCONSIN



LOCATION OF LANDMARK

VERNON COUNTY COORDINATE SYSTEM	
Northing	192093.778
Easting	677908.489
Datum	NAD 1983 (2011)
Elevation	
Datum	
TYPE OF LANDMARK:	
Existing 3/4" Iron Rod	
BEARINGS ARE REFERENCED TO:	
Vernon County Coordinates (Survey Grade)	

Witnesses: Laurence E Johns III

Date: 20 July 2020

Describe or show any material discrepancy between the location of the restored corner and that of the corner previously restored or re-established.

Wm Knower established this corner, in October 1885, during a survey in Section 21. He shows that he placed a stone at all corners.

Curtis Cummer was at this corner, in September 2001, during a survey in Section 21. He shows he set a 3/4" iron rod and prepared a tie sheet.

Michael Lydon was at this corner, from May to August 2008, during several surveys in Section 21. He shows he found a 3/4" iron rod.

Describe any record evidence, monument evidence, testimonial evidence or any other material evidence you considered and whether the monument was found or restored through acceptance of an obliterated evidence location.

No bearing trees of record were located.

I found the 3/4" iron rod set by Cummer, along with 2 of his ties.

Cummer notes he could not find the stone set by Knower, but did find buried fence wire, indicating that at some point there was an occupational line at this location.

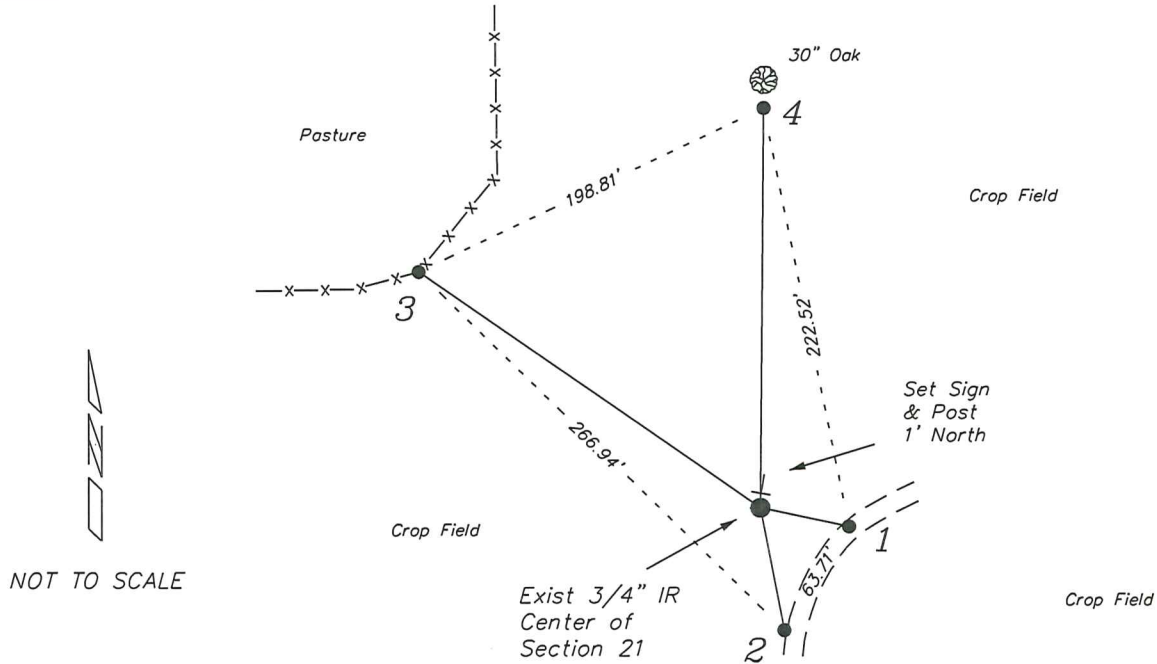
the distance to the found stone to the West was within a foot of Knower's distance. The distance to the Stone to the East was 30 feet longer than that of Knower's. Possibly an error of a half-chain. Distance to the South is within a foot and about 15 feet short to the North.

This location fits fairly well with Knower's survey and is 0.34 feet Northwest of the intersection of quarter lines.

I accepted the location of the iron rod as the best available evidence of where Knower had intended the corner to me. Due to the number of rocks located here, I could not replace the monument with a more substantial one.

RECORD OF DURABLE WITNESS MONUMENTS

NO	DESCRIPTION	BEARING	DISTANCE
1	Existing 3/4" Iron Rod North Edge of Field Road	S 78°02'35" E (S 73° E)	47.29' (47.06')
2	Existing 3/4" Iron Rod 1' West of Field Road Edge	S 11°05'48" E (S 10° E)	65.06' (67.78')
3	Set 3/4" x 18" Iron Rod East Side of Wood Fence Post	N 55°15'40" W	216.40'
4	Set 3/4" x 18" Iron Rod 3' South of a 30" Oak	N 00°31'47" E	208.27'



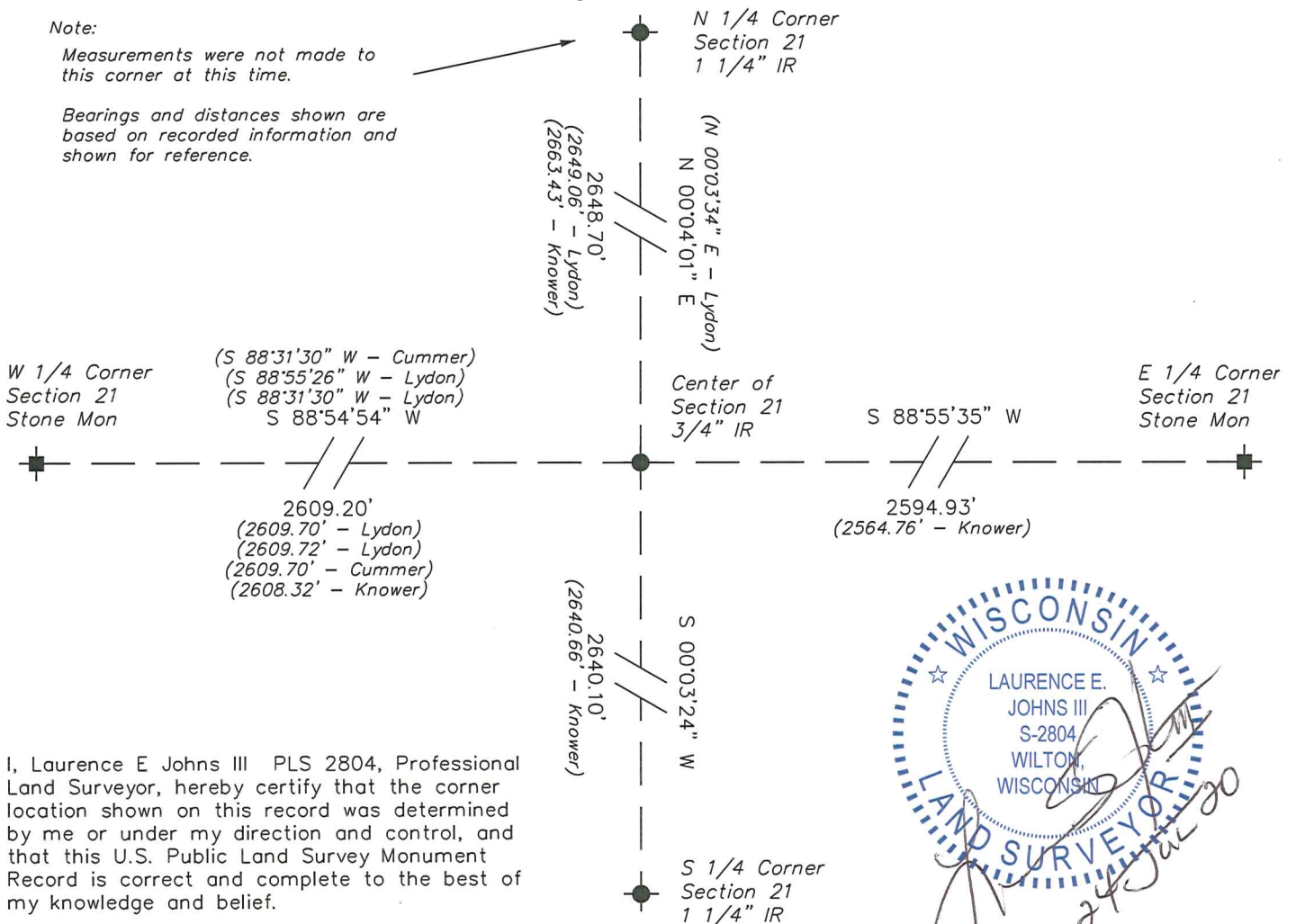
PLAN VIEW DRAWING OF REFERENCE TIES

Map Showing Distance And Direction To Other Public Land Survey Corners Used For Re-Establishing The Corner

Note:

Measurements were not made to this corner at this time.

Bearings and distances shown are based on recorded information and shown for reference.



I, Laurence E Johns III PLS 2804, Professional Land Surveyor, hereby certify that the corner location shown on this record was determined by me or under my direction and control, and that this U.S. Public Land Survey Monument Record is correct and complete to the best of my knowledge and belief.

RECEIVED

SEP 5 2001

BY: m.m.

Vernon County Certified U.S. Public Land Survey Monument Record

INSTRUCTIONS: THIS RECORD SHALL SHOW THE LOCATION OF THE CORNER AND SHALL INCLUDE ALL OF THE FOLLOWING ELEMENTS (A-I)

(A) IDENTIFY THE CORNER BY REFERENCE TO THE U.S. PUBLIC LAND SURVEY SYSTEM

■ = CORNER MONUMENT RESTORED

WITNESSES TO CORNER LOCATION:

- 1) Curtis J. Cummer
- 2) Brett A. Janzen
- 3)

STATE PLANE COORDINATES (WISCONSIN SOUTH ZONE)

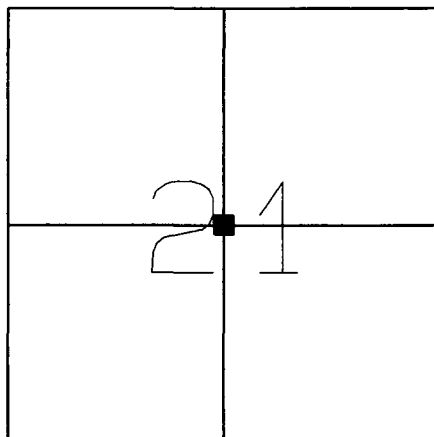
NORTHING:

EASTING:

VERNON COUNTY COORDINATES

NORTHING:

EASTING:



SECTION 21, TOWN 14 NORTH, RANGE 5 WEST
Township of Coon

(B) DESCRIBE ANY RECORD EVIDENCE, MONUMENT EVIDENCE, OCCUPATIONAL EVIDENCE, TESTIMONIAL EVIDENCE OR ANY OTHER MATERIAL EVIDENCE YOU CONSIDERED, AND WHETHER THE MONUMENT WAS FOUND OR PLACED.

Found 8 large stones and other smaller stones in a pile 1' below surface within 2' of computed location of stone monument set by W. Knower on October 23 - 27, 1885.

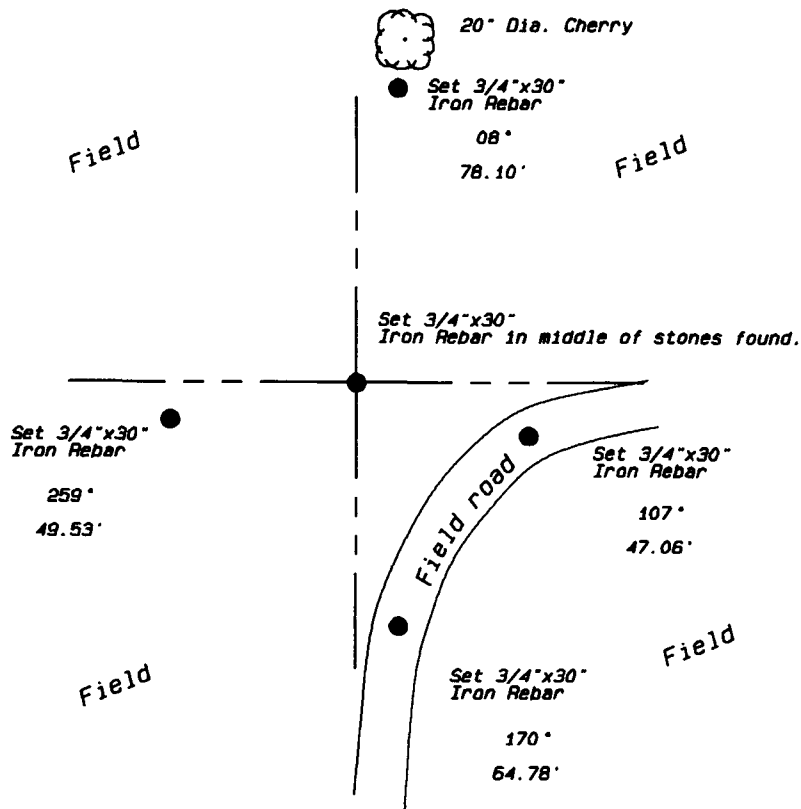
Also found old barbed wire approx. 1' below surface lying in an East West direction at this position.

I could not distinguish which particular stone would have been the correct one, I therefor placed a 3/4"x30" Iron Rebar at the center of said stones; this location fits well with record distances.

(C) IN THE PLAN VIEW DRAWING BELOW, PROVIDE REFERENCE TIES TO AT LEAST 4 WITNESS MONUMENTS OR, IF THE LOCATION IS WITHIN A MUNICIPALITY, TO AT LEAST 2 WITNESS MONUMENTS. (WITNESS MONUMENTS SHALL BE MADE OF CONCRETE, NATURAL STONE, IRON, OR OTHER EQUALLY DURABLE MATERIAL.) DESCRIBE WITNESS MONUMENTS.

(D) SHOW A PLAN VIEW DRAWING, DEPICTING THE RELEVANT MONUMENTS AND REFERENCE TIES, WHICH IS SUFFICIENTLY DETAILED TO ENABLE ACCURATE RELOCATION OF THE CORNER MONUMENT IF IT IS DISTURBED.

Azimuths are magnetic



(E) DESCRIBE ANY MATERIAL DISCREPANCY BETWEEN THE LOCATION OF THE CORNER AS RESTORED OR REESTABLISHED AND THE LOCATION OF THAT CORNER AS PREVIOUSLY RESTORED OR REESTABLISHED BY DISTANCE AND DIRECTION. SHOW THE DISCREPANCY ON THE PLAN VIEW DRAWING UNDER (D), ABOVE. SHOW THE DISTANCES BETWEEN THE CORNER AS PREVIOUSLY RESTORED OR REESTABLISHED AND (1) THE CORNER AS RESTORED OR REESTABLISHED, AND (2) TO AT LEAST 2 OF THE WITNESS MONUMENTS AS SHOWN ON THE DRAWING IN (D), ABOVE.

(F) WAS THE CORNER RESTORED THROUGH ACCEPTANCE OF (1) AN OBLITERATED EVIDENCE LOCATION, OR (2) A FOUND PERPETUATED LOCATION?

(2) A FOUND PERPETUATED LOCATION

(G & H) WAS THE CORNER REESTABLISHED THROUGH LOST CORNER PROPORTIONATE METHODS? IF SO SHOW THE METHOD, INCLUDING THE DIRECTION AND DISTANCES TO THE OTHER PUBLIC LAND SURVEY CORNERS USED AS EVIDENCE OR USED FOR PROPORTIONING IN DETERMINING THE CORNER LOCATION.

No.

(I) I, Curtis J. Cummer, CERTIFY THAT THE LOCATION SHOWN ON THIS RECORD WAS DETERMINED BY ME OR UNDER MY DIRECTION AND CONTROL AND THAT THIS U.S. PUBLIC LAND SURVEY MONUMENT RECORD IS CORRECT AND COMPLETE TO THE BEST OF MY KNOWLEDGE AND BELIEF.

C. J. C. 9/5/01
SIGNATURE DATE

LAND SURVEYOR SEAL

