

RECEIVED
 FEB 12 2004
 BY: G. Jacobson

Vernon County Certified U.S. Public Land Survey Monument Record

INSTRUCTIONS: THIS RECORD SHALL SHOW THE LOCATION OF THE CORNER AND SHALL INCLUDE ALL OF THE FOLLOWING ELEMENTS (A-I)

(A) IDENTIFY THE CORNER BY REFERENCE TO THE U.S. PUBLIC LAND SURVEY SYSTEM

■ = CORNER MONUMENT RESTORED

WITNESSES TO CORNER LOCATION:

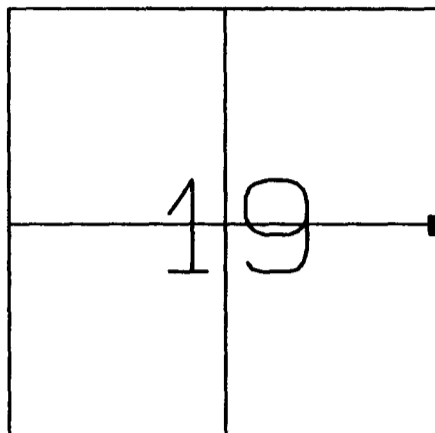
- 1) Curtis J. Cummer
- 2) Jeff C. Nedland
- 3) Jay D. Pederson

STATE PLANE COORDINATES (WISCONSIN SOUTH ZONE)

NORTHING:
 EASTING:

VERNON COUNTY COORDINATES

NORTHING: 191903.78
 EASTING: 670044.61



SECTION 19, TOWN 14 NORTH, RANGE 5 WEST
 Coon Township

(B) DESCRIBE ANY RECORD EVIDENCE, MONUMENT EVIDENCE, OCCUPATIONAL EVIDENCE, TESTIMONIAL EVIDENCE OR ANY OTHER MATERIAL EVIDENCE YOU CONSIDERED, AND WHETHER THE MONUMENT WAS FOUND OR PLACED.

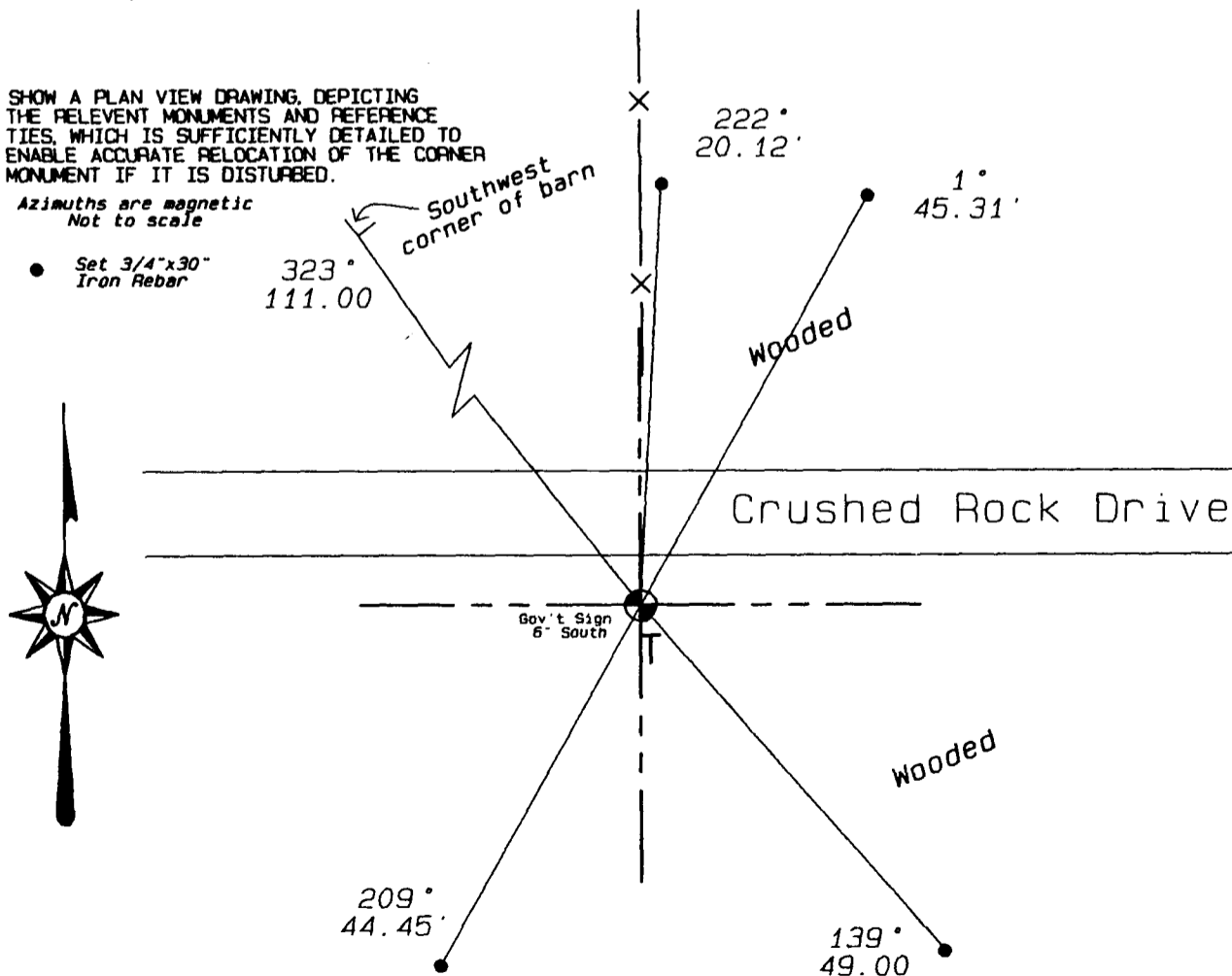
FOUND 1' IRON PIPE SET BY K. DON PEDERSON IN 2000. REPLACED WITH VERNON COUNTY MONUMENT.

(C) IN THE PLAN VIEW DRAWING BELOW, PROVIDE REFERENCE TIES TO AT LEAST 4 WITNESS MONUMENTS OR, IF THE LOCATION IS WITHIN A MUNICIPALITY, TO AT LEAST 2 WITNESS MONUMENTS. (WITNESS MONUMENTS SHALL BE MADE OF CONCRETE, NATURAL STONE, IRON, OR OTHER EQUALLY DURABLE MATERIAL.) DESCRIBE WITNESS MONUMENTS.

(D) SHOW A PLAN VIEW DRAWING, DEPICTING THE RELEVANT MONUMENTS AND REFERENCE TIES, WHICH IS SUFFICIENTLY DETAILED TO ENABLE ACCURATE RELOCATION OF THE CORNER MONUMENT IF IT IS DISTURBED.

Azimuths are magnetic
 Not to scale

- Set 3/4"x30" Iron Rebar



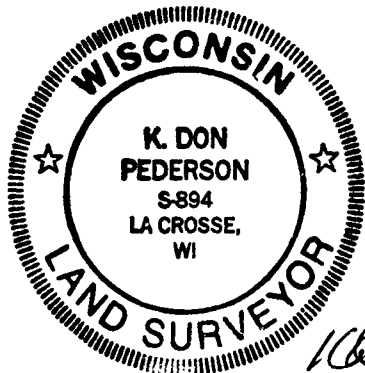
U.S. PUBLIC LAND SURVEY MONUMENT RECORD

SECTION 19 T14N, R5W, TOWN OF COON
VERNON COUNTY

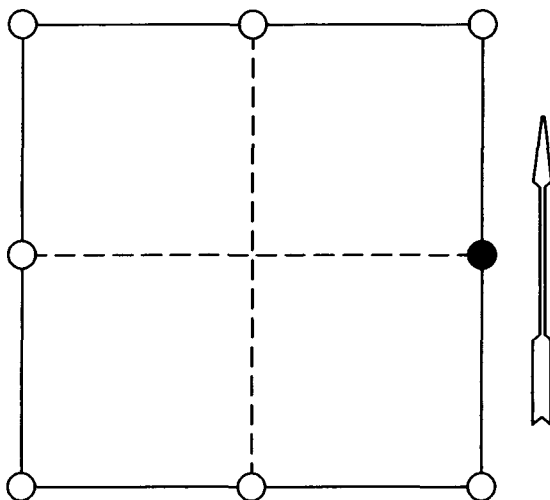
CERTIFICATE

I, K. DON PEDERSON, DO HEREBY CERTIFY THAT ON THE 20 DAY OF MAY 2000, I FOUND (~~EVIDENCE~~) (NO EVIDENCE) OF THE E 1/4 CORNER OF SECTION 19, T 14 N, R 5 W, AND I REESTABLISHED SAID CORNER ACCORDING TO THE WISCONSIN STATUTES AS SHOWN AND DESCRIBED HEREON.

DATED THIS 31ST DAY OF JULY 2000



K. Don Pederson



● = CORNER LOCATION
SECTION 19, T14N, R5W
TOWN OF COON

HISTORY OF ORIGINAL CORNER ESTABLISHMENT:

ORIGINAL CORNER ESTABLISHED BY ALFRED L. BROWN IN OCTOBER, 1846.

DESCRIPTION OF CORNER EVIDENCE FOUND:

RE-ESTABLISHED CORNER PROPORTIONED BETWEEN SE & NE CORNERS OF SECTION 19 AND IN LINE WITH OCCUPATIONAL EVIDENCE TO NORTH ON SECTION LINE.

MARK SCHUELLER & SHERMAN LARSON STATEMENT: THE EAST-WEST 1/4 SECTION LINE FENCE ON THE SOUTH LINE OF THE SW-NW OF SECTION 20 WAS REMOVED TO BUILD AN ACCESS ROAD TO SCHUELLER ACROSS SAID SW-NW.

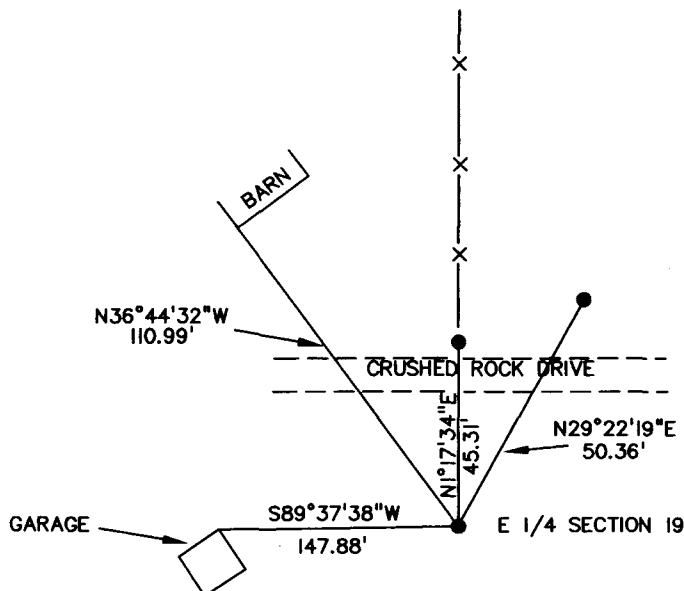
SHERMAN LARSON STATEMENT: AGREEMENT WAS VERBAL, NO WIDTH SPECIFIED, WHATEVER NEEDED TO BUILD ROAD, REASON; THE ONE ROD EASEMENT ACROSS THE NE-NE OF SECTION 19 WAS NOT FEASIBLE. (DITCH)

DESCRIPTION OF CORNER AND WITNESS MONUMENTS, REFERENCES AND ACCESSORIES USED TO PERPETUATE THE ORIGINAL OR REESTABLISHED LOCATION OF THIS CORNER:

WITNESSES TO CORNER LOCATION:

SKETCH:

- SET 1"X24" IRON PIPE
- ⊗ POWER POLE
- RAILROAD SPIKE
- X—X FENCE



(E) DESCRIBE ANY MATERIAL DISCREPANCY BETWEEN THE LOCATION OF THE CORNER AS RESTORED OR REESTABLISHED AND THE LOCATION OF THAT CORNER AS PREVIOUSLY RESTORED OR REESTABLISHED BY DISTANCE AND DIRECTION. SHOW THE DISCREPANCY ON THE PLAN VIEW DRAWING UNDER (D), ABOVE. SHOW THE DISTANCES BETWEEN THE CORNER AS PREVIOUSLY RESTORED OR REESTABLISHED AND (1) THE CORNER AS RESTORED OR REESTABLISHED, AND (2) TO AT LEAST 2 OF THE WITNESS MONUMENTS AS SHOWN ON THE DRAWING IN (D), ABOVE.

(NA)

(F) WAS THE CORNER RESTORED THROUGH ACCEPTANCE OF (1) AN OBLITERATED EVIDENCE LOCATION, OR (2) A FOUND PERPETUATED LOCATION?

(2)

(G & H) WAS THE CORNER REESTABLISHED THROUGH LOST CORNER PROPORTIONATE METHODS? IF SO SHOW THE METHOD, INCLUDING THE DIRECTION AND DISTANCES TO THE OTHER PUBLIC LAND SURVEY CORNERS USED AS EVIDENCE OR USED FOR PROPORTIONING IN DETERMINING THE CORNER LOCATION.

(NA)

(I) I, Curtis J. Cummer, CERTIFY THAT THE LOCATION SHOWN ON THIS RECORD WAS DETERMINED BY ME OR UNDER MY DIRECTION AND CONTROL AND THAT THIS U.S. PUBLIC LAND SURVEY MONUMENT RECORD IS CORRECT AND COMPLETE TO THE BEST OF MY KNOWLEDGE AND BELIEF.

 2/11/04
SIGNATURE DATE

LAND SURVEYOR SEAL

