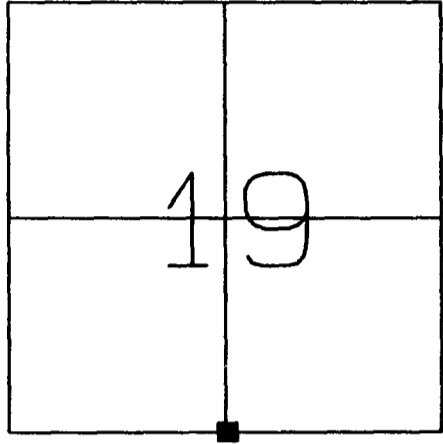


FEB 12 2004
S. Jacobson

Vernon County Certified U.S. Public Land Survey Monument Record

INSTRUCTIONS: THIS RECORD SHALL SHOW THE LOCATION OF THE CORNER AND SHALL INCLUDE ALL OF THE FOLLOWING ELEMENTS (A-I)

(A) IDENTIFY THE CORNER BY REFERENCE TO THE U.S. PUBLIC LAND SURVEY SYSTEM



SECTION 19, TOWN 14 NORTH, RANGE 5 WEST
 Coon Township

■ = CORNER MONUMENT RESTORED

WITNESSES TO CORNER LOCATION:

- 1) Curtis J. Cumber
- 2) Jeff C. Nedland
- 3) Jay D. Pederson

STATE PLANE COORDINATES (WISCONSIN SOUTH ZONE)

NORTHING:
 EASTING:

VERNON COUNTY COORDINATES

NORTHING: 189234.69
 EASTING: 667358.17

(B) DESCRIBE ANY RECORD EVIDENCE, MONUMENT EVIDENCE, OCCUPATIONAL EVIDENCE, TESTIMONIAL EVIDENCE OR ANY OTHER MATERIAL EVIDENCE YOU CONSIDERED, AND WHETHER THE MONUMENT WAS FOUND OR PLACED.

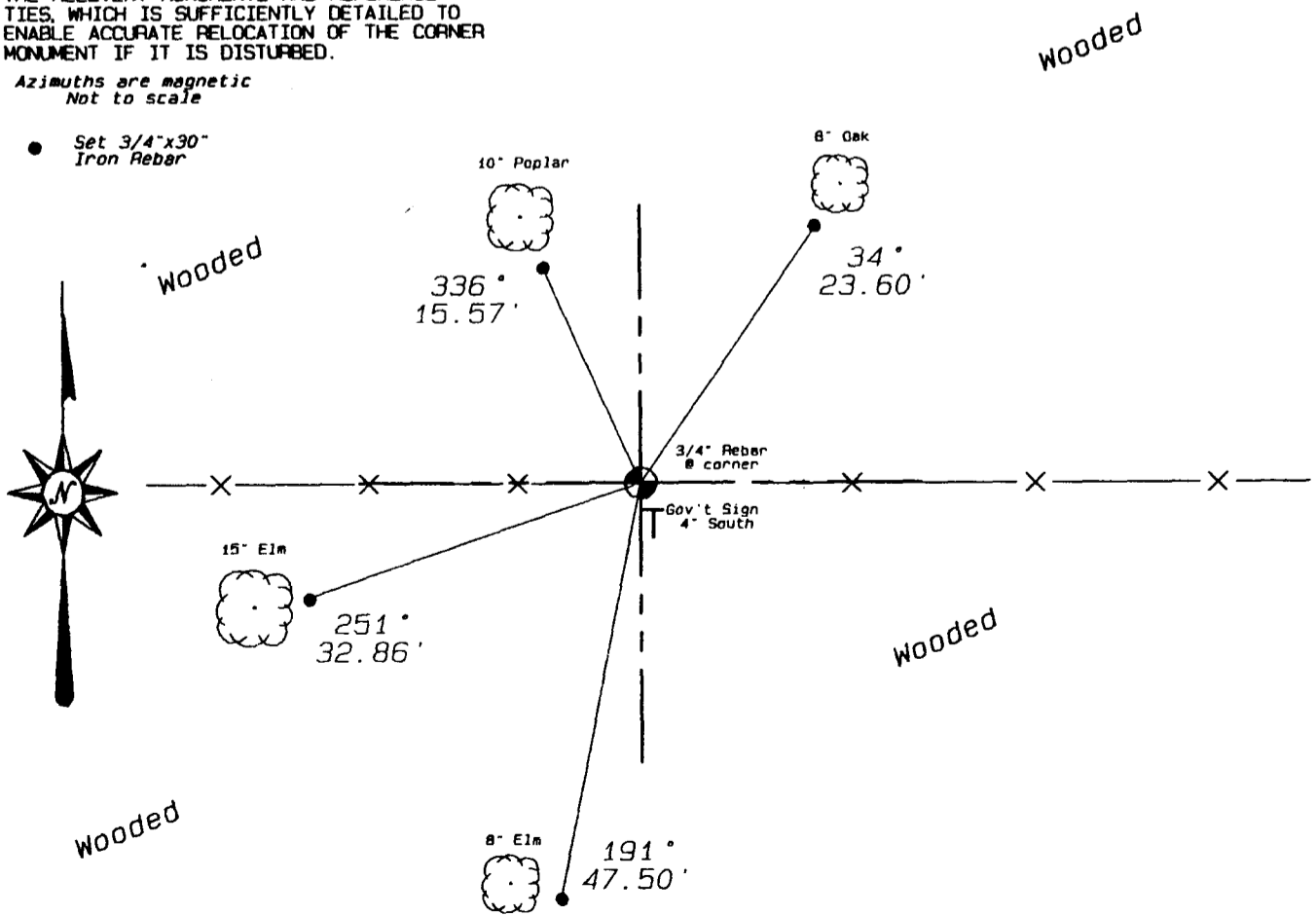
FOUND 3/4" IRON BAR SET BY DOUGLAS MALLIET IN 1996. ATTEMPTED TO SET VERNON COUNTY MONUMENT AT SAID LOCATION. AT A DEPTH OF ABOUT ONE FOOT HIT SOLID ROCK. SET 3/4" X 30" IRON REBAR WITH YELLOW BLACKHAWK L. S. CAP.

(C) IN THE PLAN VIEW DRAWING BELOW, PROVIDE REFERENCE TIES TO AT LEAST 4 WITNESS MONUMENTS OR, IF THE LOCATION IS WITHIN A MUNICIPALITY, TO AT LEAST 2 WITNESS MONUMENTS. (WITNESS MONUMENTS SHALL BE MADE OF CONCRETE, NATURAL STONE, IRON, OR OTHER EQUALLY DURABLE MATERIAL.) DESCRIBE WITNESS MONUMENTS.

(D) SHOW A PLAN VIEW DRAWING, DEPICTING THE RELEVANT MONUMENTS AND REFERENCE TIES, WHICH IS SUFFICIENTLY DETAILED TO ENABLE ACCURATE RELOCATION OF THE CORNER MONUMENT IF IT IS DISTURBED.

*Azimuths are magnetic
 Not to scale*

- Set 3/4"x30" Iron Rebar



(E) DESCRIBE ANY MATERIAL DISCREPANCY BETWEEN THE LOCATION OF THE CORNER AS RESTORED OR REESTABLISHED AND THE LOCATION OF THAT CORNER AS PREVIOUSLY RESTORED OR REESTABLISHED BY DISTANCE AND DIRECTION. SHOW THE DISCREPANCY ON THE PLAN VIEW DRAWING UNDER (D), ABOVE. SHOW THE DISTANCES BETWEEN THE CORNER AS PREVIOUSLY RESTORED OR REESTABLISHED AND (1) THE CORNER AS RESTORED OR REESTABLISHED, AND (2) TO AT LEAST 2 OF THE WITNESS MONUMENTS AS SHOWN ON THE DRAWING IN (D), ABOVE.

(NA)

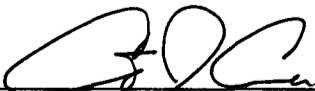
(F) WAS THE CORNER RESTORED THROUGH ACCEPTANCE OF (1) AN OBLITERATED EVIDENCE LOCATION, OR (2) A FOUND PERPETUATED LOCATION?

(2)

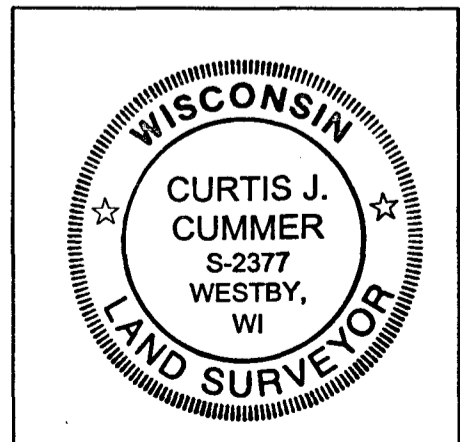
(G & H) WAS THE CORNER REESTABLISHED THROUGH LOST CORNER PROPORTIONATE METHODS? IF SO SHOW THE METHOD, INCLUDING THE DIRECTION AND DISTANCES TO THE OTHER PUBLIC LAND SURVEY CORNERS USED AS EVIDENCE OR USED FOR PROPORTIONING IN DETERMINING THE CORNER LOCATION.

(NA)

(I) I, Curtis J. Cummer, CERTIFY THAT THE LOCATION SHOWN ON THIS RECORD WAS DETERMINED BY ME OR UNDER MY DIRECTION AND CONTROL AND THAT THIS U.S. PUBLIC LAND SURVEY MONUMENT RECORD IS CORRECT AND COMPLETE TO THE BEST OF MY KNOWLEDGE AND BELIEF.

 2/11/04
SIGNATURE DATE

LAND SURVEYOR SEAL



JUN 19 1996

CERTIFIED LAND CORNER

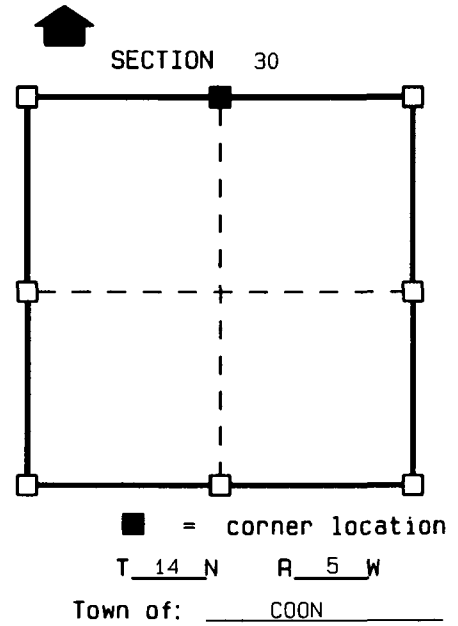
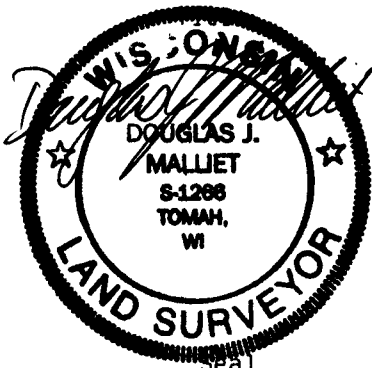
STATE OF WISCONSIN)
COUNTY OF VERNON) S.S.

CERTIFICATE

I, DOUGLAS J. MALLIET, do hereby certify
that on the 30th day of MAY 1996,
I found ~~(evidence)~~ (no evidence) of the N 1/4
corner of SECTION 30, T14 N, R5 W,
Fourth Principal Meridian, and I re-established
said corner according to the Wisconsin Statutes
as shown and described hereon.

Dated this 4th day of JUNE 1996

DOUGLAS J. MALLIET R.L.S. S-1266



History of original corner establishment:

ORIGINAL CORNER ESTABLISHED BY BROWN IN 1846.
C.M. STERLING LABELED CORNER AS LOST ON A SURVEY IN SECTION 30 DATED 1893.
STERLING NOTES ON SAID SURVEY THAT HE RE-ESTABLISHED CORNER BY MEASUREMENT,
YET HE GIVES NO TIES OR INDICATION OF A MONUMENT SET.

Description of corner evidence found:

ESTABLISHED CORNER USING STERLING'S RECORDED DISTANCE NORTH FROM THE CENTER
OF SECTION 30, WHICH MATCHED OCCUPATION EAST AND WEST AT THE CORNER AREA.
LOCATED OCCUPATION AT THE NORTHEAST AND NORTHWEST CORNERS OF SECTION 30 AND
USED A PRORATION OF STERLING'S RECORDED DISTANCES ALONG THE NORTH LINE OF
THE SECTION TO ESTABLISH EAST/WEST POSITION OF CORNER.

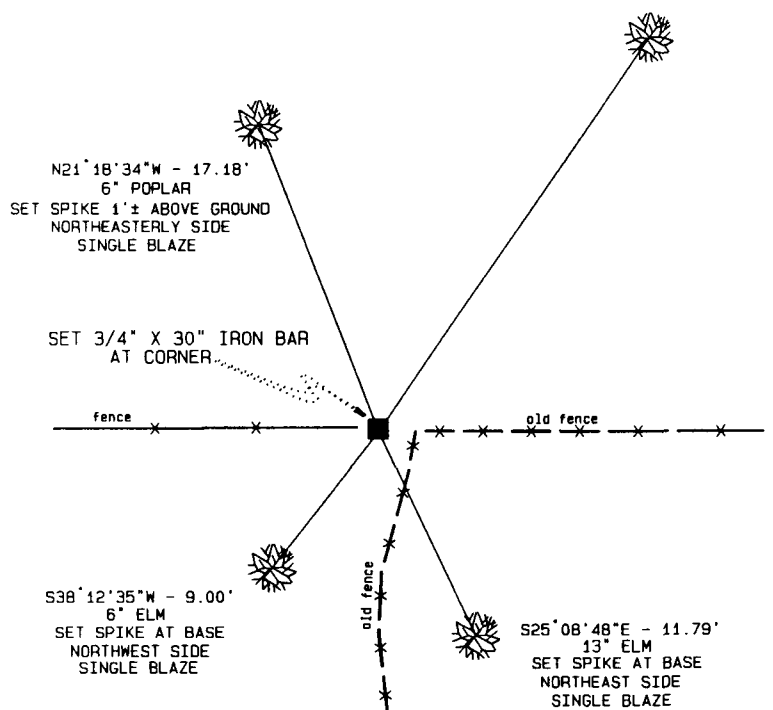
Description of corner and witness monuments, references and accessories used to
perpetuate the original or re-established location of this corner:

Witnesses to corner location:

DOUGLAS J. MALLIET
TOM HARNEISH

Sketch:

N34°25'47"E - 24.81'
15" BLACK OAK
SET SPIKE IN ROOT
SOUTHEAST SIDE
SINGLE BLAZE



NOT TO SCALE

SURVEY CONTROL ORDER

Horizontal
Vertical

WISCONSIN COORDINATE SYSTEM

Corner	East (X)	North (Y)	Elevation (Z)	Zone
Control Sta. Name				