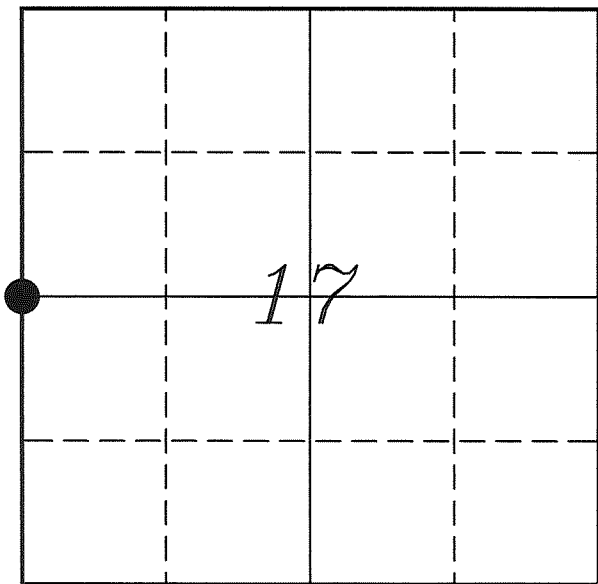

U. S. PUBLIC LAND SURVEY MONUMENT RECORD

SECTION 17, T14N, R5W, TOWN OF COON VERNON COUNTY, WISCONSIN



LOCATION OF LANDMARK

Crew: Laurence E Johns III
Larry Handschy

Date: 25 March 2010

| VERNON COUNTY COORDINATE SYSTEM | |
|---------------------------------|-----------------|
| Northing | 197179.443 |
| Easting | 670043.667 |
| Datum | NAD 1983 (2007) |
| Elevation | |
| Datum | |
| TYPE OF LANDMARK: | |
| Set Lunde Monument | |
| BEARINGS ARE REFERENCED TO: | |
| Vernon County Coordinates | |

Describe any record evidence, monument evidence, testimonial evidence or any other material evidence you considered and whether the monument was found or restored through acceptance of an obliterated evidence location.

No bearing trees of record were found.

Only occupation in the area is an East/West Fence line, approximately 5.5' North of the single prorated location.

The distance to the North is shorter than what Knower had measured, but the 300' high point of rocky steep hill as called for in the original notes may account for the difference.

Accepted the intersection of the East/West fence and the straight line-between the NW & SW Corners of Section 17 as the best possible location of the original government corner.

Set a Lunde Monument 1' North of the fence next to a 4" Wood Post.

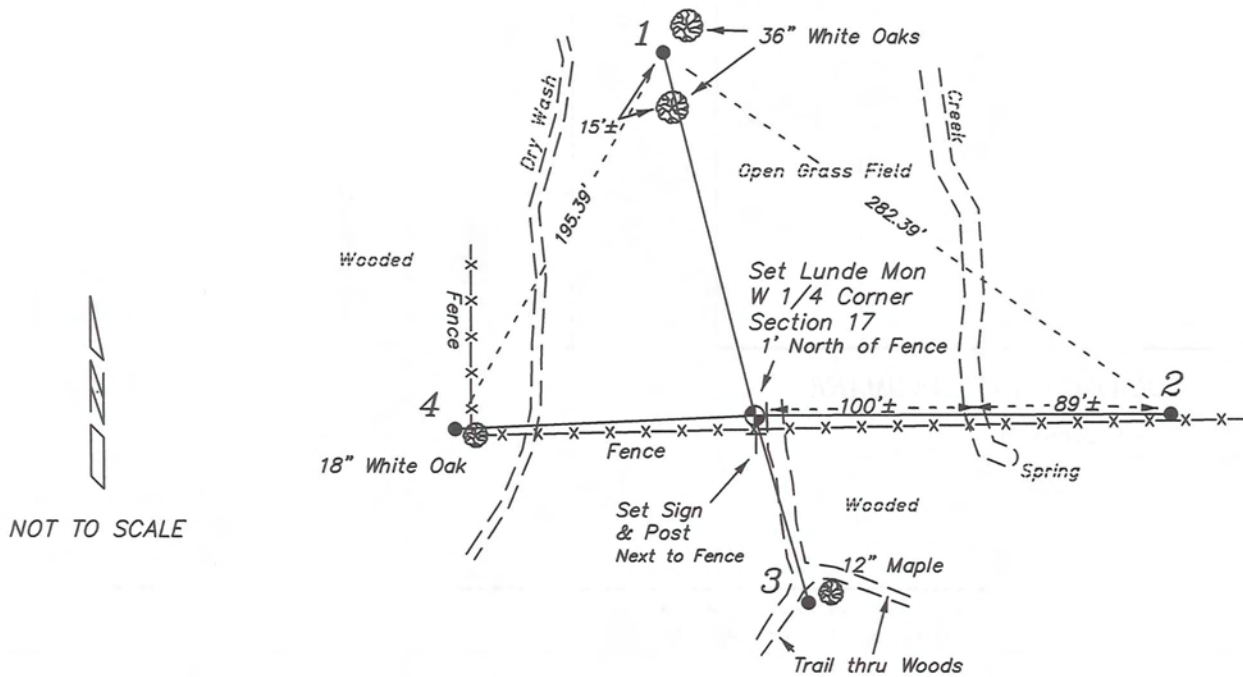
Describe or show any material discrepancy between the location of the restored corner and that of the corner previously restored or re-established.

Alfred Brown established this corner in October 1846.

Wm Knower was here, in October 1887, during a survey in Section 18. He found the government corner and tied to one bearing tree.

RECORD OF DURABLE WITNESS MONUMENTS

| NO | DESCRIPTION | BEARING | DISTANCE |
|----|--|---------------|----------|
| 1 | Set 3/4" x 18" Iron Rod 2' Southwest of a 36" White Oak | N 14°03'55" W | 169.81' |
| 2 | Set 3/4" x 18" Iron Rod In Fence | N 89°42'08" E | 188.81' |
| 3 | Set 3/4" x 18" Iron Rod Southwest Side of a 12" Maple | S 16°01'23" E | 88.18' |
| 4 | Set 3/4" x 18" Iron Rod Northwest Side 18" Oak/Fence Corner | S 87°22'58" W | 136.06' |

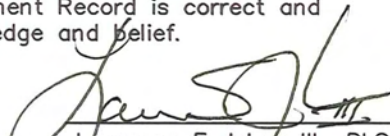


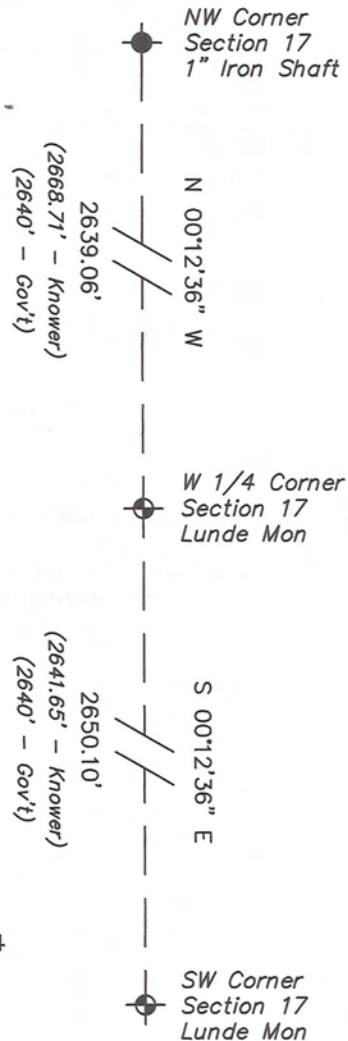
PLAN VIEW DRAWING OF REFERENCE TIES

Map Showing Distance And Direction To Other Public Land Survey
Corners Used For Re-Establishing The Corner



I, Laurence E Johns III RLS 2804, Registered Land Surveyor, hereby certify that the corner location shown on this record was determined by me or under my direction and control, and that this U.S. Public Land Survey Monument Record is correct and complete to the best of my knowledge and belief.


 Laurence E Johns III RLS 2804
 Eagle Ridge Surveying, LLC
 PO Box 213
 Wilton, Wisconsin
 25 March 2010



VERNON COUNTY COORDINATE SUBMISSION FORM
 "As An Addendum To"
VERNON COUNTY
CERTIFIED U.S. PUBLIC LAND SURVEY MONUMENT RECORD

INSTRUCTIONS: THIS RECORD FORM SHOULD BE USED WHEN COORDINATES ARE PROVIDED FOR A PUBLIC LAND SURVEY CORNER AND SHALL INCLUDE ALL OF THE FOLLOWING ELEMENTS (A-D)

(A) IDENTIFY THE CORNER BY REFERENCE TO THE U.S. PUBLIC LAND SURVEY SYSTEM IN DIAGRAM AT RIGHT

● = CORNER MONUMENT

(B) COORDINATES:

GEOGRAPHIC (Degrees Minutes Seconds)

LATITUDE: 43° 41' 16.5313" N

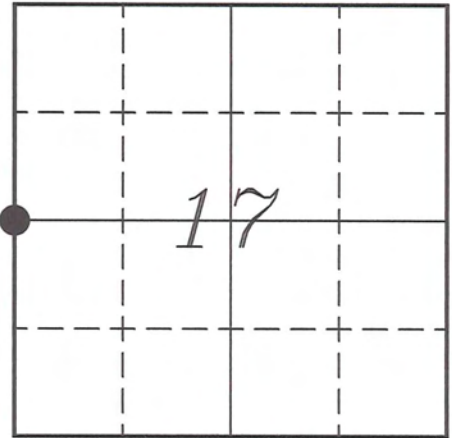
LONGITUDE: 91° 00' 35.9499" W

ELLIPSOID HT (m): _____

DATUM: NAD 1983 (2007)

GEOID03 ADJ: -32.357

ORTHOMETRIC HT: _____



T 14 N, R 5 W

VERNON COUNTY (U.S. FEET)

Coord Quality (+/-)

NORTHING (Y): 197179.443 _____

EASTING (X): 670043.667 _____

GPS METHOD USED TO COMPUTE COORDINATES (check as applicable)

- RTK Observations Static Baselines OPUS-RS Solution OPUS-S Solution
 Combination of GPS Observations & Conventional Procedures

Was a Least Squares Adjustment Used to Compute Coordinates? Yes / No

BASE CONTROL USED FOR COORDINATE COMPUTATION

| Station Name | Station Coordinates | Date/Time |
|----------------------------|--|---------------------------|
| <u>OPUS Station - CN07</u> | <u>43° 42' 15.5488" N 91° 01' 07.7465" W</u> | <u>03/25/2010 - 15:31</u> |
| | <u>N - 203162.047 E - 667724.176</u> | |
| <u>OPUS Station - CN07</u> | _____ | <u>03/29/2010 - 09:05</u> |

(C) REASON FOR COORDINATES SUBMITTAL (check one)

- Being Filed With a New U.S. PLS Monument Record
 To Correct the Coordinates Listed on a Previously Filed PLS Monument Record
 To Provide Coordinates for Previously Filed PLS Monument Record without Coordinates
 To Provide Supplemental Coordinates for a Previously Filed PLS Monument Record

MOST RECENT PLS MONUMENT RECORD DATE:

R.L.S. WHO CREATED MOST RECENT PLS MONUMENT RECORD:

(D) AGENT(S) PERFORMING GPS OBSERVATIONS & COORDINATE COMPUTATION

- 1) LAURENCE E JOHNS III
 2) _____

I, LAURENCE E JOHNS III RLS 2804, REGISTERED LAND SURVEYOR, HEREBY CERTIFY THAT THE COORDINATES PROVIDED ON THIS RECORD WERE DETERMINED BY ME OR UNDER MY DIRECTION AND CONTROL AND THAT THIS COORDINATE SUBMISSION FORM IS CORRECT AND COMPLETE TO THE BEST OF MY KNOWLEDGE AND BELIEF.

Laurence E Johns III RLS 2804
 Eagle Ridge Surveying, LLC
 PO Box 213
 Wilton, Wisconsin
 29 March 2010

