

RECEIVED  
 FEB 12 2004  
 BY: *E. Jacobson*

## Vernon County Certified U.S. Public Land Survey Monument Record

INSTRUCTIONS: THIS RECORD SHALL SHOW THE LOCATION OF THE CORNER AND SHALL INCLUDE ALL OF THE FOLLOWING ELEMENTS (A-I)

(A) IDENTIFY THE CORNER BY REFERENCE TO THE U.S. PUBLIC LAND SURVEY SYSTEM

■ - CORNER MONUMENT RESTORED

WITNESSES TO CORNER LOCATION:

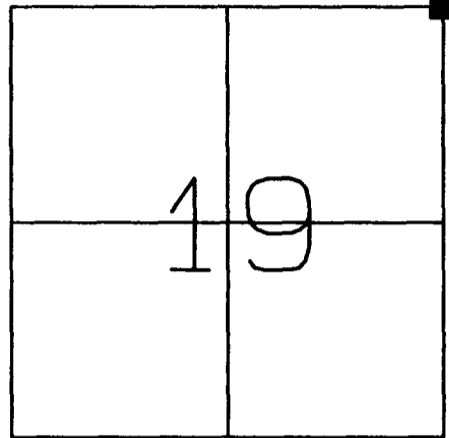
- 1) Curtis J. Cummer
- 2) Jeff C. Nedland
- 3) Jay D. Pederson

STATE PLANE COORDINATES (WISCONSIN SOUTH ZONE)

NORTHING:  
 EASTING:

VERNON COUNTY COORDINATES

NORTHING: 194529.38  
 EASTING: 670053.32



SECTION 19, TOWN 14 NORTH, RANGE 5 WEST  
 Coon Township

(B) DESCRIBE ANY RECORD EVIDENCE, MONUMENT EVIDENCE, OCCUPATIONAL EVIDENCE, TESTIMONIAL EVIDENCE OR ANY OTHER MATERIAL EVIDENCE YOU CONSIDERED, AND WHETHER THE MONUMENT WAS FOUND OR PLACED.

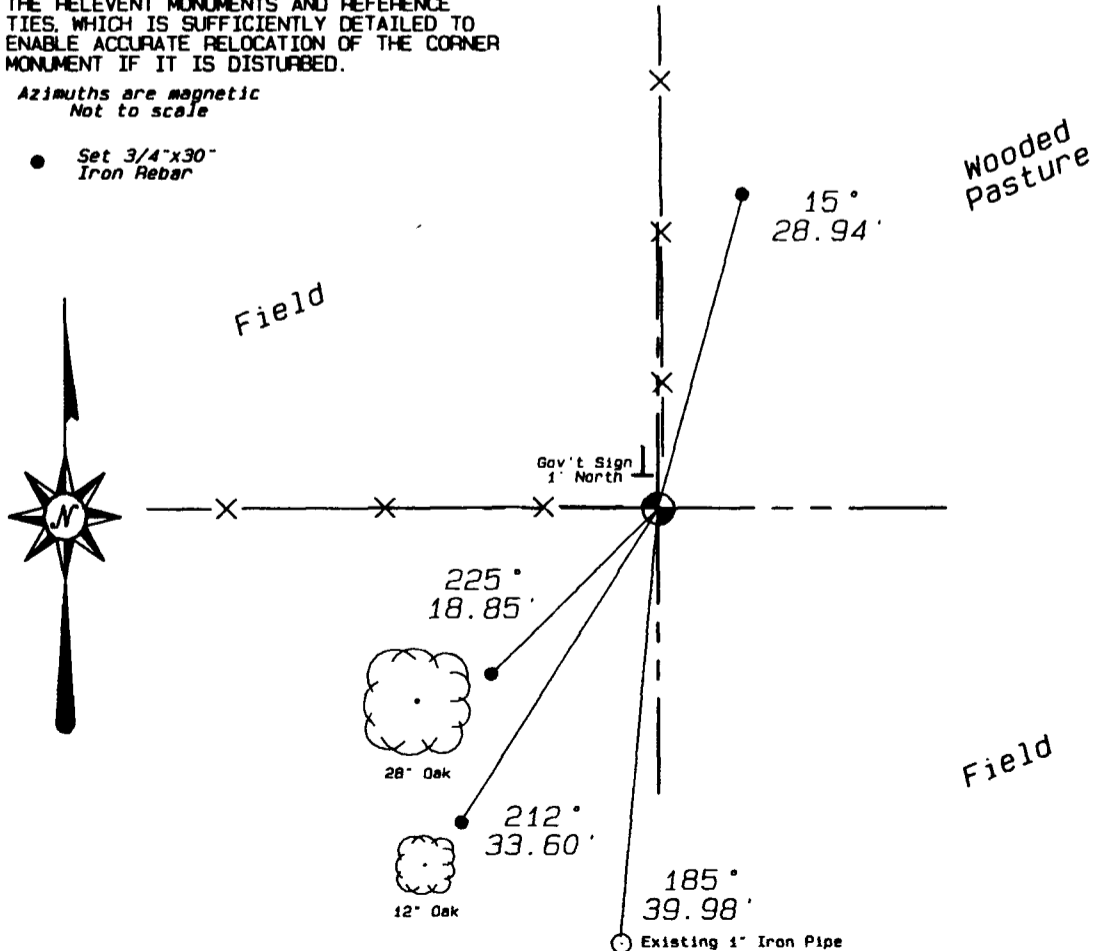
FOUND 1" IRON PIPE SET BY K. DON PEDERSON SET IN 2000. REPLACED WITH VERNON COUNTY MONUMENT.

(C) IN THE PLAN VIEW DRAWING BELOW, PROVIDE REFERENCE TIES TO AT LEAST 4 WITNESS MONUMENTS OR, IF THE LOCATION IS WITHIN A MUNICIPALITY, TO AT LEAST 2 WITNESS MONUMENTS. (WITNESS MONUMENTS SHALL BE MADE OF CONCRETE, NATURAL STONE, IRON, OR OTHER EQUALLY DURABLE MATERIAL.) DESCRIBE WITNESS MONUMENTS.

(D) SHOW A PLAN VIEW DRAWING, DEPICTING THE RELEVANT MONUMENTS AND REFERENCE TIES, WHICH IS SUFFICIENTLY DETAILED TO ENABLE ACCURATE RELOCATION OF THE CORNER MONUMENT IF IT IS DISTURBED.

*Azimuths are magnetic  
 Not to scale*

● Set 3/4"x30"  
 Iron Rebar



48

(E) DESCRIBE ANY MATERIAL DISCREPANCY BETWEEN THE LOCATION OF THE CORNER AS RESTORED OR REESTABLISHED AND THE LOCATION OF THAT CORNER AS PREVIOUSLY RESTORED OR REESTABLISHED BY DISTANCE AND DIRECTION. SHOW THE DISCREPANCY ON THE PLAN VIEW DRAWING UNDER (D), ABOVE. SHOW THE DISTANCES BETWEEN THE CORNER AS PREVIOUSLY RESTORED OR REESTABLISHED AND (1) THE CORNER AS RESTORED OR REESTABLISHED, AND (2) TO AT LEAST 2 OF THE WITNESS MONUMENTS AS SHOWN ON THE DRAWING IN (D), ABOVE.

(NA)

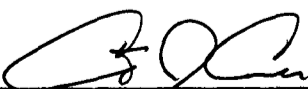
(F) WAS THE CORNER RESTORED THROUGH ACCEPTANCE OF (1) AN OBLITERATED EVIDENCE LOCATION, OR (2) A FOUND PERPETUATED LOCATION?

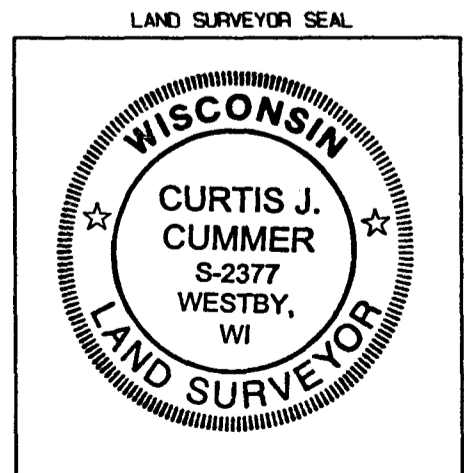
(2)

(G & H) WAS THE CORNER REESTABLISHED THROUGH LOST CORNER PROPORTIONATE METHODS? IF SO SHOW THE METHOD, INCLUDING THE DIRECTION AND DISTANCES TO THE OTHER PUBLIC LAND SURVEY CORNERS USED AS EVIDENCE OR USED FOR PROPORTIONING IN DETERMINING THE CORNER LOCATION.

(NA)

(I) I, Curtis J. Cummer, CERTIFY THAT THE LOCATION SHOWN ON THIS RECORD WAS DETERMINED BY ME OR UNDER MY DIRECTION AND CONTROL AND THAT THIS U.S. PUBLIC LAND SURVEY MONUMENT RECORD IS CORRECT AND COMPLETE TO THE BEST OF MY KNOWLEDGE AND BELIEF.

 2/11/04  
SIGNATURE DATE



U.S. PUBLIC LAND SURVEY MONUMENT RECORD

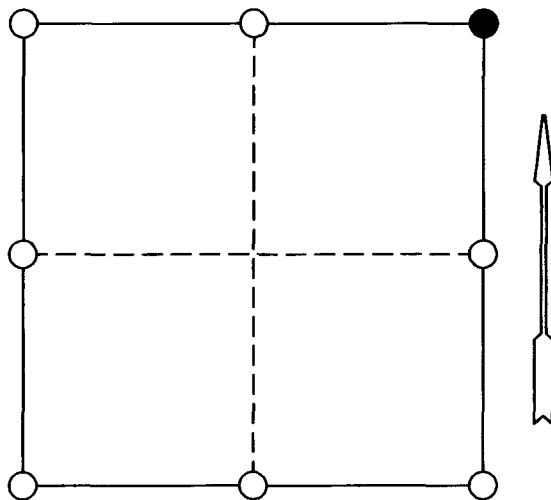
SECTION 19, T14N, R5W, TOWN OF COON  
VERNON COUNTY

CERTIFICATE

I, K. DON PEDERSON, DO HEREBY CERTIFY THAT ON THE 23 DAY OF MAY 2000, I FOUND (~~EVIDENCE~~) (NO EVIDENCE) OF THE NE CORNER OF SECTION 19, T 14 N, R 5 W, AND I REESTABLISHED SAID CORNER ACCORDING TO THE WISCONSIN STATUTES AS SHOWN AND DESCRIBED HEREON.

DATED THIS 31<sup>ST</sup> DAY OF JULY 2000

*K. Don Pederson*



● = CORNER LOCATION  
SECTION 19, T14N, R5W  
TOWN OF COON

HISTORY OF ORIGINAL CORNER ESTABLISHMENT:

ORIGINAL CORNER ESTABLISHED BY ALFRED L. BROWN IN OCT., 1846.  
WILLIAM KNOWER, COUNTY SURVEYOR, RENEWED CORNER IN OCTOBER 1887.

DESCRIPTION OF CORNER EVIDENCE FOUND:

ERNEST HAUGEN TESTIMONY: FENCE CORNER LOCATION SAME FOR HIS LIFETIME. BEST EVIDENCE AVAILABLE.

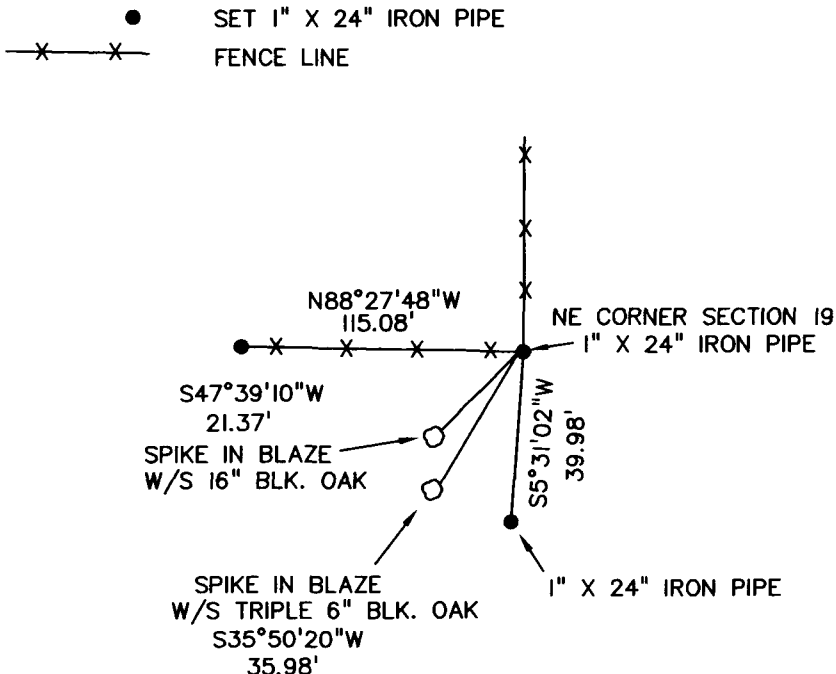
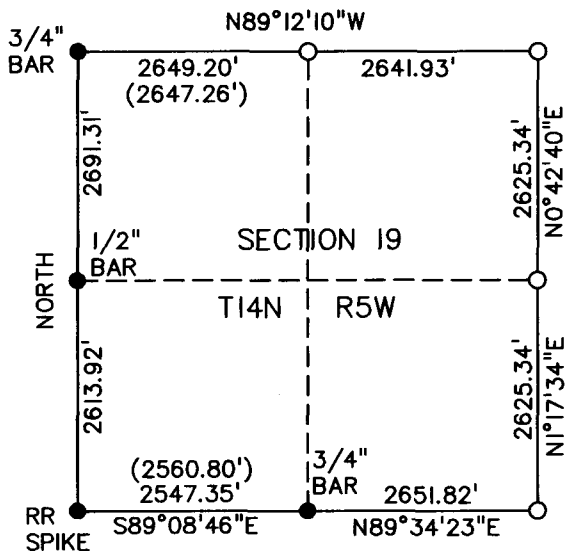
DESCRIPTION OF CORNER AND WITNESS MONUMENTS, REFERENCES AND ACCESSORIES USED TO PERPETUATE THE ORIGINAL OR REESTABLISHED LOCATION OF THIS CORNER:

WITNESSES TO CORNER LOCATION:

K. DON PEDERSON

PAUL CHAFER

SKETCH: NOT TO SCALE



( ) GOVERNMENT NOTES  
● MONUMENT IN PLACE