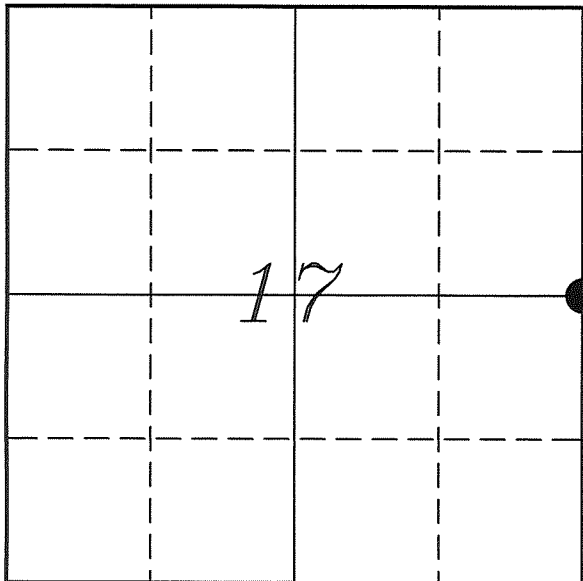


---

# U. S. PUBLIC LAND SURVEY MONUMENT RECORD

---

## SECTION 17, T14N, R5W, TOWN OF COON VERNON COUNTY, WISCONSIN



LOCATION OF LANDMARK

VERNON COUNTY COORDINATE SYSTEM	
Northing	197305.678
Easting	675333.244
Datum	NAD 1983 (2007)
Elevation	
Datum	
TYPE OF LANDMARK:	
Set Lunde Monument	
BEARINGS ARE REFERENCED TO:	
Vernon County Coordinates	

Crew: Laurence E Johns III  
Larry Handschy

Date: 25 March 2010

---

*Describe any record evidence, monument evidence, testimonial evidence or any other material evidence you considered and whether the monument was found or restored through acceptance of an obliterated evidence location.*

No evidence of the original mound and pit.

Since the NE Corner of Section 17 was established as being on a straight line between the NE Corner of Section 8 and the SE Corner of Section 17. I followed that reasoning in determining this corner.

The North/South fence at this location does line up on a straight line from the NE of Section 17 and the SE of Section 17, giving more evidence to that reasoning as well.

I set a Lunde Monument at the single proportional location between the NE Corner and the SE Corner of Section 17.

With no occupational evidence in the area to prove otherwise, accepted this location as the best available evidence of the original government corner.

---

*Describe or show any material discrepancy between the location of the restored corner and that of the corner previously restored or re-established.*

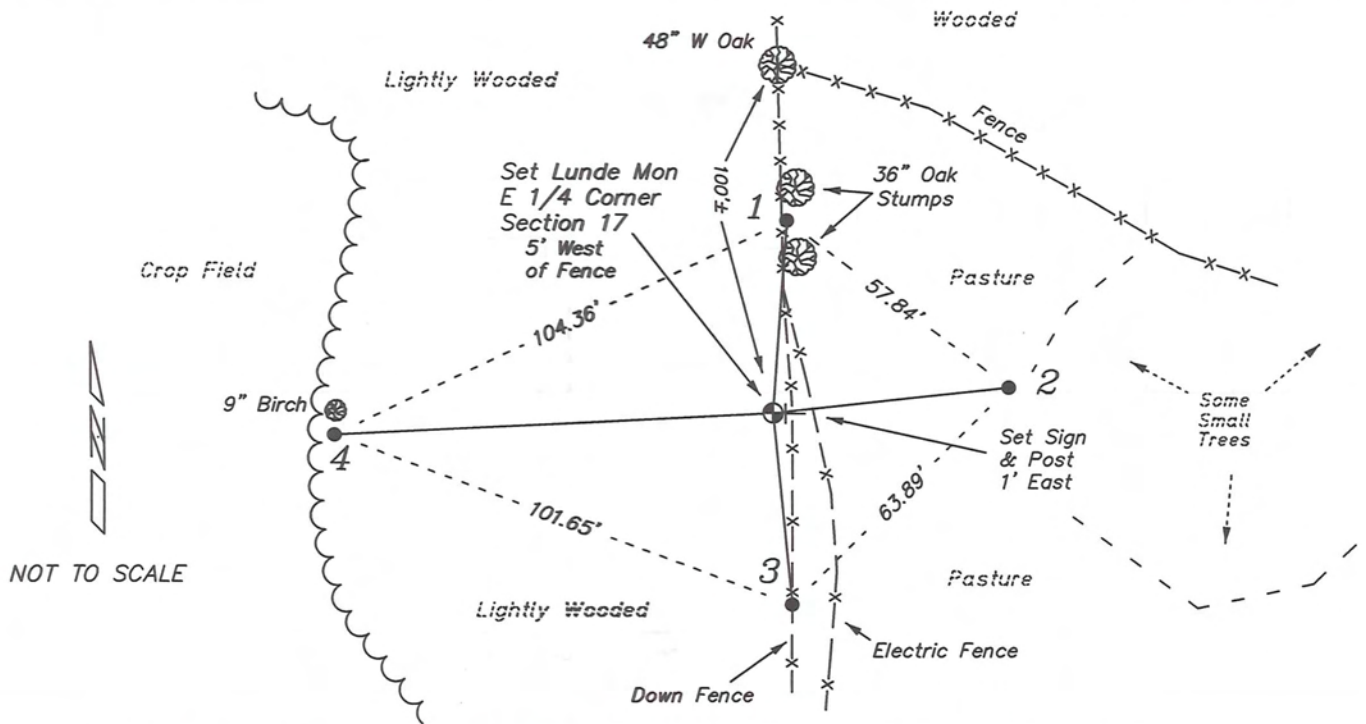
Alfred Brown established this corner in October 1846 and a post in a mound with a pit 8 links East.

Wm Knower was through here, in June 1887, during a survey in Sections 5 & 8. He used the the SE Corner of Section 17 and the E 1/4 Corner of Section 5 to determine the lost corner at the SE Corner of Section 8. He did not determine this corner but was through on this North/South Line.

CM Sterling was through here, in November 1892, during a survey in Section 9. He re-established the SE Corner of Section 8 using the same method as Knower. He did not determine this corner but was through on this North/South Line.

# RECORD OF DURABLE WITNESS MONUMENTS

NO	DESCRIPTION	BEARING	DISTANCE
1	Set 3/4" x 18" Iron Rod 1' South of the North 36" Oak Stump	N 04°07'43" E	40.26'
2	Set 3/4" x 18" Iron Rod	N 83°52'22" E	49.31'
3	Set 3/4" x 18" Iron Rod North Side of Old Wood Fence Post	S 05°28'55" E	40.07'
4	Set 3/4" x 18" Iron Rod South Side of a 9" Birch	S 87°12'23" W	91.56'




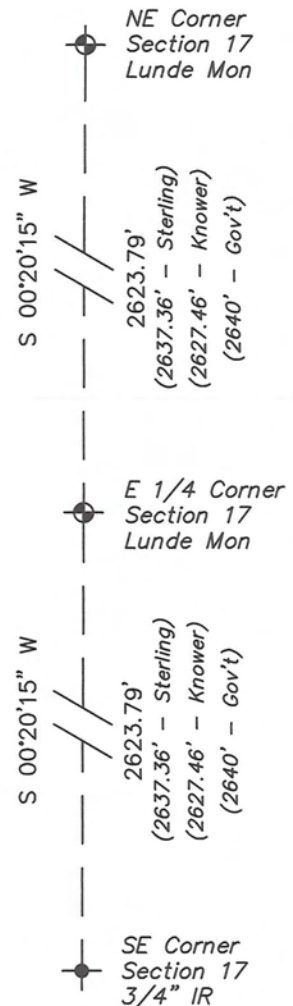
## PLAN VIEW DRAWING OF REFERENCE TIES

Map Showing Distance And Direction To Other Public Land Survey  
Corners Used For Re-Establishing The Corner



I, Laurence E Johns III RLS 2804, Registered Land Surveyor, hereby certify that the corner location shown on this record was determined by me or under my direction and control, and that this U.S. Public Land Survey Monument Record is correct and complete to the best of my knowledge and belief.

  
 Laurence E Johns III RLS 2804  
 Eagle Ridge Surveying, LLC  
 PO Box 213  
 Wilton, Wisconsin  
 25 March 2010  
 Revised  
 30 April 2010

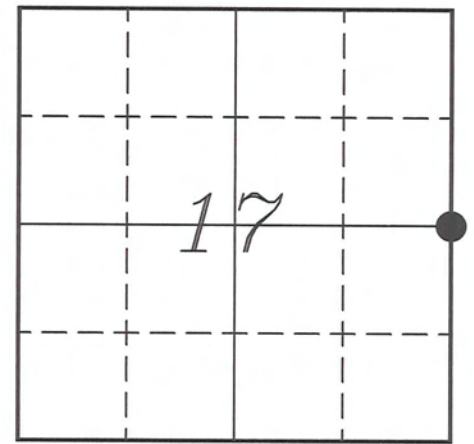


**VERNON COUNTY COORDINATE SUBMISSION FORM**  
 "As An Addendum To"  
**VERNON COUNTY**  
**CERTIFIED U.S. PUBLIC LAND SURVEY MONUMENT RECORD**

INSTRUCTIONS: THIS RECORD FORM SHOULD BE USED WHEN COORDINATES ARE PROVIDED FOR A PUBLIC LAND SURVEY CORNER AND SHALL INCLUDE ALL OF THE FOLLOWING ELEMENTS (A-D)

(A) IDENTIFY THE CORNER BY REFERENCE TO THE U.S. PUBLIC LAND SURVEY SYSTEM IN DIAGRAM AT RIGHT

● = CORNER MONUMENT



T 14 N, R 5 W

(B) COORDINATES:

GEOGRAPHIC (Degrees Minutes Seconds)  
 LATITUDE: 43° 41' 17.9141" N  
 LONGITUDE: 90° 59' 23.9683" W  
 ELLIPSOID HT (m): \_\_\_\_\_  
 DATUM: NAD 1983 (2007)  
 GEOID03 ADJ: -32.430  
 OTHROMETRIC HT: \_\_\_\_\_

VERNON COUNTY (U.S. FEET)

Coord Quality (+/-)

NORTHING (Y): 197305.678 \_\_\_\_\_  
 EASTING (X): 675333.244 \_\_\_\_\_

GPS METHOD USED TO COMPUTE COORDINATES (check as applicable)

RTK Observations     Static Baselines     OPUS-RS Solution     OPUS-S Solution  
 Combination of GPS Observations & Conventional Procedures

Was a Least Squares Adjustment Used to Compute Coordinates? Yes /  No

BASE CONTROL USED FOR COORDINATE COMPUTATION

Station Name	Station Coordinates	Date/Time
<u>COON W GPS</u>	<u>43° 40' 51.9083" N 90° 59' 35.7184" W</u> <u>N - 194674.506 E - 674463.195</u>	<u>03/25/2010 - 11:31</u>
<u>Same</u>	_____	<u>03/29/2010 - 09:28</u>

(C) REASON FOR COORDINATES SUBMITTAL (check one)

Being Filed With a New U.S. PLS Monument Record  
 To Correct the Coordinates Listed on a Previously Filed PLS Monument Record  
 To Provide Coordinates for Previously Filed PLS Monument Record without Coordinates  
 To Provide Supplemental Coordinates for a Previously Filed PLS Monument Record

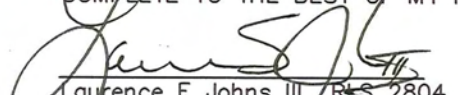
MOST RECENT PLS MONUMENT RECORD DATE:

R.L.S. WHO CREATED MOST RECENT PLS MONUMENT RECORD:

(D) AGENT(S) PERFORMING GPS OBSERVATIONS & COORDINATE COMPUTATION

1) LAURENCE E JOHNS III  
 2) \_\_\_\_\_

I, LAURENCE E JOHNS III RLS 2804, REGISTERED LAND SURVEYOR, HEREBY CERTIFY THAT THE COORDINATES PROVIDED ON THIS RECORD WERE DETERMINED BY ME OR UNDER MY DIRECTION AND CONTROL AND THAT THIS COORDINATE SUBMISSION FORM IS CORRECT AND COMPLETE TO THE BEST OF MY KNOWLEDGE AND BELIEF.

  
 Laurence E Johns III RLS 2804  
 Eagle Ridge Surveying, LLC  
 PO Box 213  
 Wilton, Wisconsin  
 29 March 2010

