

# VERNON COUNTY U.S. PUBLIC LAND SURVEY MONUMENT RECORD

INSTRUCTIONS: THIS RECORD SHALL SHOW THE LOCATION OF THE CORNER AND SHALL INCLUDE ALL OF THE FOLLOWING ELEMENTS (A THROUGH I).

(A) IDENTIFY THE CORNER AS REFERENCED TO THE U.S. PUBLIC LAND SURVEY SYSTEM

■ = CORNER MONUMENT RESTORED

WITNESSES TO CORNER LOCATION:  
MOISESGEOVANNI GOMEZ

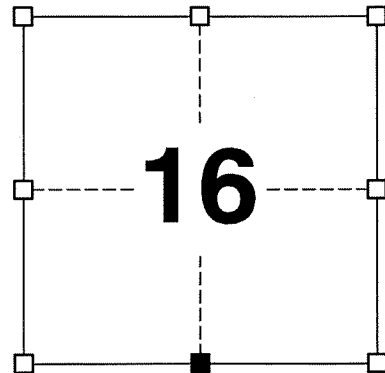
GEOGRAPHIC COORDINATES,  
NAD 83 (2011) ADJUSTMENT:

LATITUDE: 43° 40' 52.6630"  
LONGITUDE: 90° 58' 48.7968"

WISCONSIN COORDINATE REFERENCE SYSTEM (WISCRS),  
VERNON COUNTY, NAD 83 (2011) ADJUSTMENT:

NORTHING: 194,742.48  
EASTING: 677,911.58

NOTE: COORDINATES PROVIDED MEET THE DEFINITION OF SURVEY GRADE AS DEFINED BY THE WISCONSIN COUNTY SURVEYOR'S ASSN.



SECTION 16  
TOWNSHIP 14 NORTH, RANGE 5 WEST  
TOWN OF COON

(B) DESCRIBE ANY RECORD EVIDENCE, MONUMENT EVIDENCE, OCCUPATIONAL EVIDENCE, TESTIMONIAL EVIDENCE OR ANY OTHER MATERIAL EVIDENCE YOU CONSIDERED, AND WHETHER THE MONUMENT WAS FOUND OR PLACED.

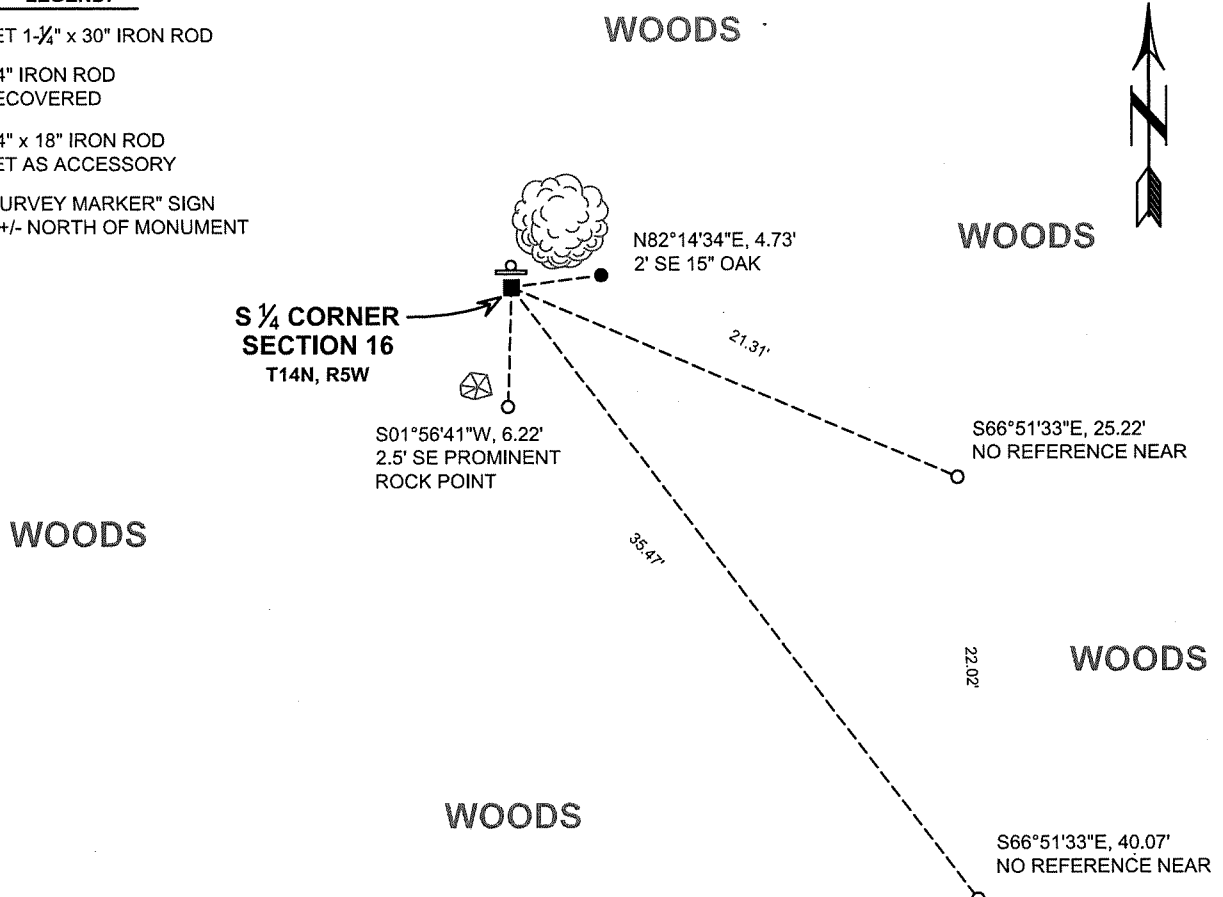
I COULD FIND NO MONUMENTS OR BEARING TREES FROM THE ORIGINAL GOVERNMENT SURVEY OR KNOWER'S SUBSEQUENT RESURVEY. I ALSO COULD FIND NO STONE AT THE LOCATION REPORTED BY CUMMER AND LYDON. AFTER MEASURING TO THE SOUTHEAST AND SOUTHWEST CORNERS OF SECTION 16, AND AGREEING QUITE WELL WITH RECORDED BEARINGS AND DISTANCES, I REMONUMENTED THIS CORNER AT THE LOCATION I BELIEVE TO BE PREVIOUSLY OCCUPIED BY THE STONE REPORTED BY CUMMER AND LYDON. I ACCEPTED THIS INFORMATION AS THE BEST AVAILABLE EVIDENCE OF KNOWER'S CORNER LOCATION AND SET A 1-1/4" x 30" IRON ROD AT THIS LOCATION IN LIEU OF A LUNDE MONUMENT BECAUSE OF ROCKY SOIL CONDITIONS.

(C) IN THE PLAN VIEW DRAWING BELOW, PROVIDE REFERENCE TIES TO AT LEAST 4 WITNESS MONUMENTS. WITNESS MONUMENTS SHALL BE MADE OF CONCRETE, NATURAL STONE, IRON, BEARING TREES OR ANY OTHER EQUALLY DURABLE MATERIAL. DEPICT THE RELEVANT MONUMENTS AND REFERENCE TIES WITH SUFFICIENT DETAIL TO ENABLE ACCURATE RELOCATION OF THE CORNER IF THE CORNER MONUMENT IS DISTURBED.

(D)

**LEGEND:**

- SET 1-1/4" x 30" IRON ROD
- 3/4" IRON ROD RECOVERED
- 3/4" x 18" IRON ROD SET AS ACCESSORY
- ⊞ "SURVEY MARKER" SIGN 1' +/- NORTH OF MONUMENT



(E) DESCRIBE ANY MATERIAL DISCREPANCY BETWEEN THE LOCATION OF THE CORNER AS RESTORED OR REESTABLISHED AND THE LOCATION OF THAT CORNER AS PREVIOUSLY RESTORED OR REESTABLISHED BY DISTANCE AND DIRECTION. SHOW THE DISCREPANCY ON THE PLAN VIEW DRAWING UNDER (D), ABOVE. SHOW THE DISTANCES BETWEEN THE CORNER AS PREVIOUSLY RESTORED OR REESTABLISHED AND (1) THE CORNER AS RESTORED OR REESTABLISHED, AND (2) TO AT LEAST 2 OF THE WITNESS MONUMENTS SHOWN ON THE DRAWING IN (D) ABOVE.

**CORNER PREVIOUSLY REPORTED TO BE A RECOVERED STONE MONUMENT. NO STONE MATCHING THE BEARING AND DISTANCE FROM AREA SECTION CORNERS WAS RECOVERED. A 1-1/4" x 30" IRON ROD WAS PLACED AT THE RECORDED BEARINGS AND DISTANCES FROM AREA SURVEYS IN THE LOCATION REPORTED TO BE OCCUPIED FORMERLY BY THE STONE AS OBSERVED BY CUMMER AND LYDON.**

(F) WAS THE CORNER RESTORED THROUGH ACCEPTANCE OF (1) AN OBLITERATED EVIDENCE LOCATION, OR (2) A FOUND PERPETUATED LOCATION?

**(1) AN OBLITERATED EVIDENCE LOCATION**

(G&H) WAS THE CORNER REESTABLISHED THROUGH LOST CORNER PROPORTIONATE METHODS? IF SO, SHOW THE METHOD, INCLUDING THE DIRECTIONS AND DISTANCES TO OTHER PUBLIC LAND SURVEY CORNERS USED AS EVIDENCE OR USED FOR PROPORTIONING IN DETERMINING THE CORNER LOCATION.

N/A

**CORNER HISTORY**

**ORIGINAL GOVERNMENT CORNER ESTABLISHED BY A.L. BROWN IN OCTOBER 1846.**

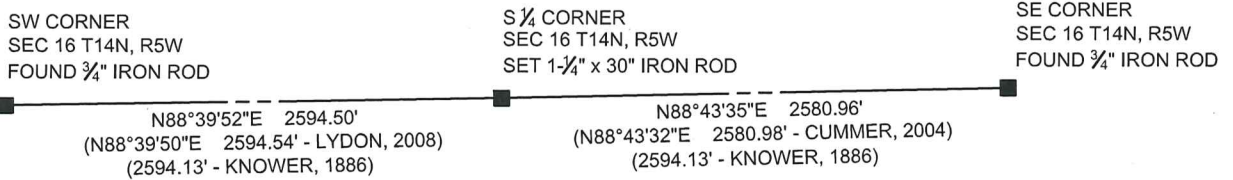
**IN A SURVEY DATED JANUARY 1886 AND FILED IN VOLUME 1, PAGE 268 OF SURVEYS AS SURVEY NUMBER 347, WILLIAM H. KNOWER REESTABLISHES THIS CORNER AT A SINGLE PROPORTIONATE LOCATION BETWEEN THE SOUTHEAST AND SOUTHWEST CORNERS OF THE SECTION. THIS SURVEY STATES "STONES X PLACED AT CORNERS."**

**IN A PLAT OF SURVEY DATED 30 NOVEMBER 2004, CURTIS CUMMER REPORTS A STONE MONUMENT RESET AT THIS LOCATION.**

**IN A PLAT OF SURVEY DATED 19 APRIL 2008, MICHAEL LYDON REPORTS RECOVERING A "STONE MONUMENT OF RECORD" AT THIS LOCATION.**

**NO TIE SHEET IS ON FILE IN THE RECORDS OF THE VERNON COUNTY SURVEYOR.**


**SECTION 16  
T14N, R5W**



**SECTION 21  
T14N, R5W**

AFFIX LAND SURVEYOR SEAL

(I) I, JAY P. ADAMS, P.L.S. - 2879, CERTIFY THAT THE CORNER LOCATION SHOWN ON THIS RECORD WAS DETERMINED BY ME OR UNDER MY DIRECTION AND CONTROL AND THAT THIS U.S. PUBLIC LAND SURVEY MONUMENT RECORD IS CORRECT AND COMPLETE TO THE BEST OF MY KNOWLEDGE AND BELIEF.

  
SIGNATURE

2/28/16  
DATE

