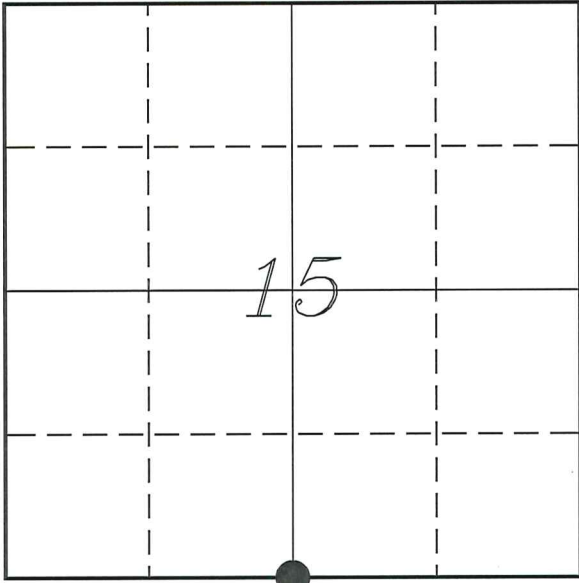


U. S. PUBLIC LAND SURVEY MONUMENT RECORD

SECTION 15, T14N, R5W, TOWN OF COON
VERNON COUNTY, WISCONSIN



LOCATION OF LANDMARK

VERNON COUNTY COORDINATE SYSTEM	
Northing	194856.401
Easting	683125.014
Datum	NAD 1983 (2011)
Elevation	
Datum	
TYPE OF LANDMARK: Existing Lunde Monument 4" Brass Capped Iron Pipe	
BEARINGS ARE REFERENCED TO: Vernon County Coordinates (Survey Grade)	

Witnesses: Laurence E Johns III

Date: 20 July 2020

Describe or show any material discrepancy between the location of the restored corner and that of the corner previously restored or re-established.

Alfred L Brown established this corner in October 1846.

Wm Kowner was at this corner, in October 1888, during a survey in Section 22. He shows he found the government corner.

C M Sterling was at this corner, in June 1892, during a survey in Section 15. He shows he found Kowner's corner.

Gary Dechant was at this corner, in May 1988, during a survey in Section 15. He shows he set a 1 1/4" iron rod.

Gary Dechant was at this corner again, in January 1998. He shows he found a 1 1/4" iron rod and prepared a tie sheet.

Curtis Cummer was at this corner in December 2001, during a survey in Section 15. He shows he found a 2" iron pipe and prepared a tie sheet.

Describe any record evidence, monument evidence, testimonial evidence or any other material evidence you considered and whether the monument was found or restored through acceptance of an obliterated evidence location.

No bearing trees of record were located.

I found a Lunde monument at the location shown on Dechant's tie sheet. There is no record of who replaced the 1 1/4" iron rod with the newer monument.

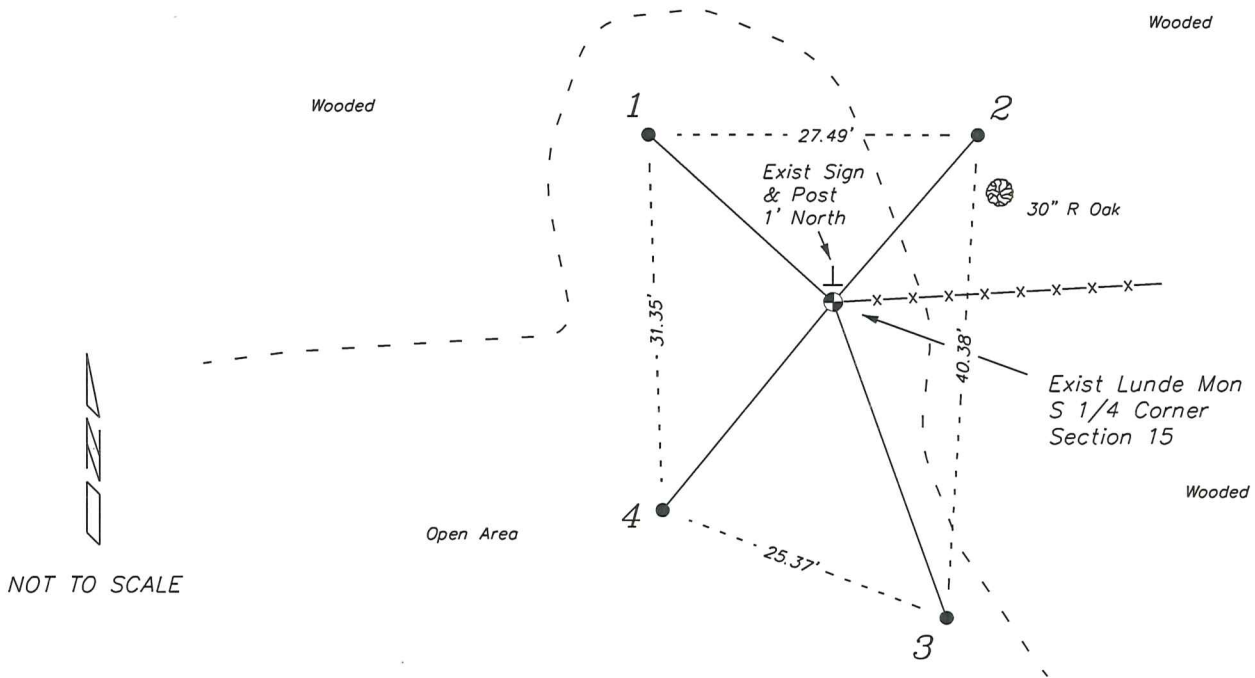
This location is 11.7' West and 5.2' West of mid-point between section corners. Both Cummer and Dechant mention that it falls between two larger brace posts in the fence. There isn't much left of the fence and the West post is entirely missing.

This location matches occupation and with distances from Kowner's survey.

I accepted the location as the best available evidence of the original government corner.

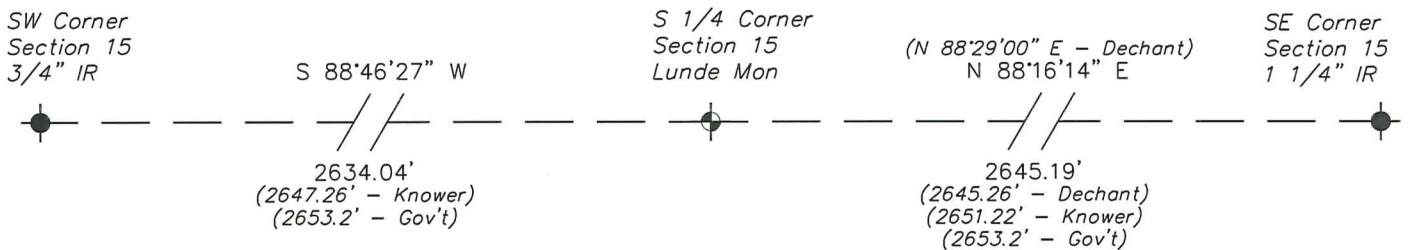
RECORD OF DURABLE WITNESS MONUMENTS

NO	DESCRIPTION	BEARING	DISTANCE
1	Existing 3/4" Iron Rod	N 47°48'30" W (N 50° W)	20.83' (21.13')
2	Existing 3/4" Iron Rod 3' North of a 30" Red Oak	N 40°55'52" E (N 43° E)	18.41' (18.31')
3	Existing 3/4" Iron Rod	S 19°43'42" E (S 21° E)	28.03' (27.95')
4	Existing 3/4" Iron Rod	S 39°23'50" W (S 39° W)	22.44' (22.47')



PLAN VIEW DRAWING OF REFERENCE TIES

Map Showing Distance And Direction To Other Public Land Survey
Corners Used For Re-Establishing The Corner



I, Laurence E Johns III PLS 2804, Professional Land Surveyor, hereby certify that the corner location shown on this record was determined by me or under my direction and control, and that this U.S. Public Land Survey Monument Record is correct and complete to the best of my knowledge and belief.

LAURENCE E.
 JOHNS III
 S-2804
 WILTON,
 WISCONSIN
 LAND SURVEYOR
 20 Jul 20

RECEIVED

DEC 14 2004

BY: *G. Jacobson*

Vernon County Certified U.S. Public Land Survey Monument Record

INSTRUCTIONS: THIS RECORD SHALL SHOW THE LOCATION OF THE CORNER AND SHALL INCLUDE ALL OF THE FOLLOWING ELEMENTS (A-I)

(A) IDENTIFY THE CORNER BY REFERENCE TO THE U.S. PUBLIC LAND SURVEY SYSTEM

■ = CORNER MONUMENT RESTORED

WITNESSES TO CORNER LOCATION:

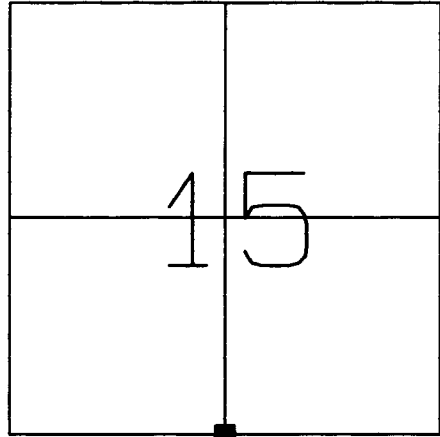
- 1) Curtis J. Cummer
- 2) Jeff C. Nedland
- 3)

STATE PLANE COORDINATES (WISCONSIN SOUTH ZONE)

NORTHING:
EASTING:

VERNON COUNTY COORDINATES

NORTHING: 194,856.33
EASTING: 683,124.84



SECTION 15, TOWN 14 NORTH, RANGE 5 WEST
Coon Township

(B) DESCRIBE ANY RECORD EVIDENCE, MONUMENT EVIDENCE, OCCUPATIONAL EVIDENCE, TESTIMONIAL EVIDENCE OR ANY OTHER MATERIAL EVIDENCE YOU CONSIDERED, AND WHETHER THE MONUMENT WAS FOUND OR PLACED.

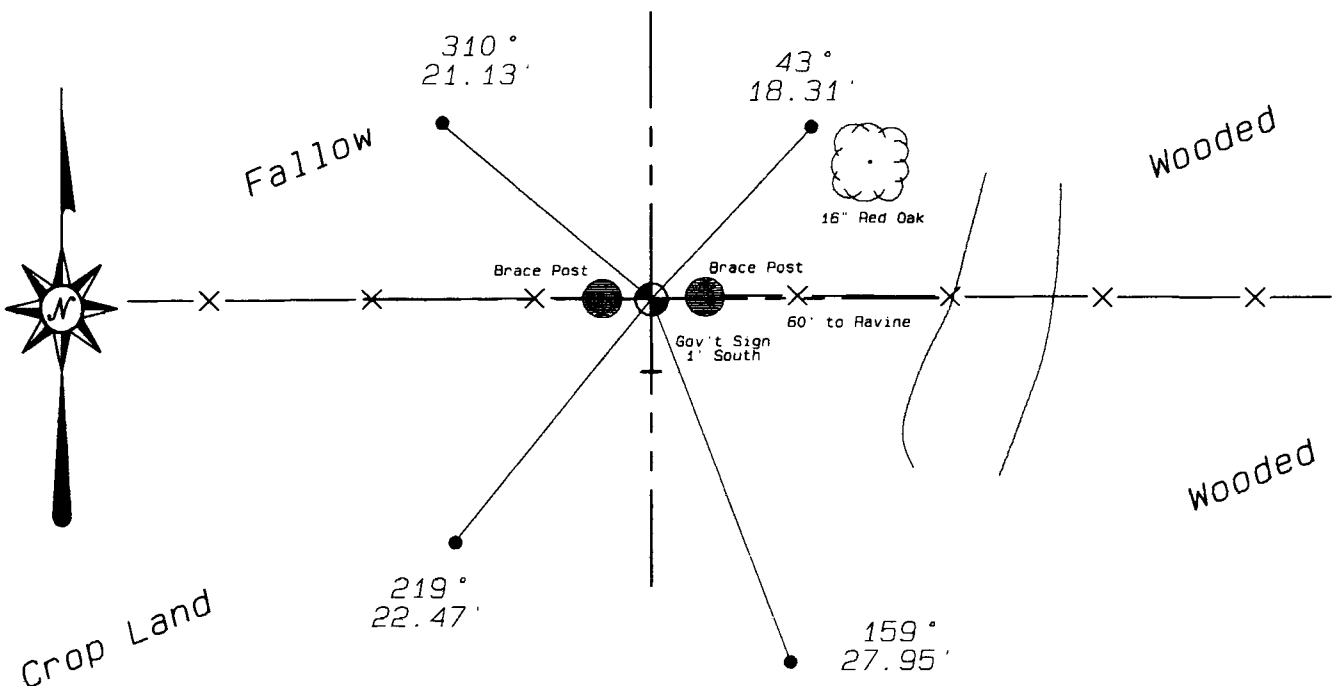
Found 2" iron pipe at occupied corner. Accepted said pipe as best available evidence.

(C) IN THE PLAN VIEW DRAWING BELOW, PROVIDE REFERENCE TIES TO AT LEAST 4 WITNESS MONUMENTS OR, IF THE LOCATION IS WITHIN A MUNICIPALITY, TO AT LEAST 2 WITNESS MONUMENTS. (WITNESS MONUMENTS SHALL BE MADE OF CONCRETE, NATURAL STONE, IRON, OR OTHER EQUALLY DURABLE MATERIAL.) DESCRIBE WITNESS MONUMENTS.

(D) SHOW A PLAN VIEW DRAWING, DEPICTING THE RELEVANT MONUMENTS AND REFERENCE TIES, WHICH IS SUFFICIENTLY DETAILED TO ENABLE ACCURATE RELOCATION OF THE CORNER MONUMENT IF IT IS DISTURBED.

*Azimuths are magnetic
Not to scale*

- Set 3/4"x30" Iron Rebar



(11A)

(E) DESCRIBE ANY MATERIAL DISCREPANCY BETWEEN THE LOCATION OF THE CORNER AS RESTORED OR REESTABLISHED AND THE LOCATION OF THAT CORNER AS PREVIOUSLY RESTORED OR REESTABLISHED BY DISTANCE AND DIRECTION. SHOW THE DISCREPANCY ON THE PLAN VIEW DRAWING UNDER (D), ABOVE. SHOW THE DISTANCES BETWEEN THE CORNER AS PREVIOUSLY RESTORED OR REESTABLISHED AND (1) THE CORNER AS RESTORED OR REESTABLISHED, AND (2) TO AT LEAST 2 OF THE WITNESS MONUMENTS AS SHOWN ON THE DRAWING IN (D), ABOVE.

(NA)

(F) WAS THE CORNER RESTORED THROUGH ACCEPTANCE OF (1) AN OBLITERATED EVIDENCE LOCATION, OR (2) A FOUND PERPETUATED LOCATION?

(2)

(G & H) WAS THE CORNER REESTABLISHED THROUGH LOST CORNER PROPORTIONATE METHODS? IF SO SHOW THE METHOD, INCLUDING THE DIRECTION AND DISTANCES TO THE OTHER PUBLIC LAND SURVEY CORNERS USED AS EVIDENCE OR USED FOR PROPORTIONING IN DETERMINING THE CORNER LOCATION.

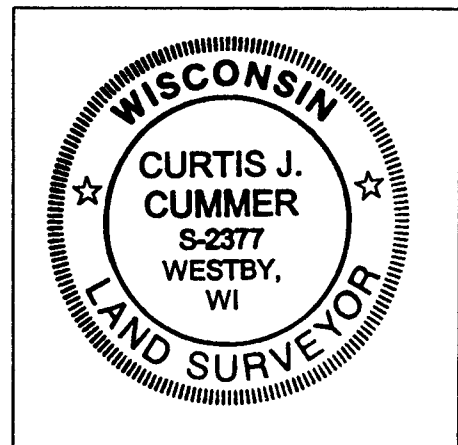
(NA)

(I) I, Curtis J. Cummer, CERTIFY THAT THE LOCATION SHOWN ON THIS RECORD WAS DETERMINED BY ME OR UNDER MY DIRECTION AND CONTROL AND THAT THIS U.S. PUBLIC LAND SURVEY MONUMENT RECORD IS CORRECT AND COMPLETE TO THE BEST OF MY KNOWLEDGE AND BELIEF.


SIGNATURE

12/12/04
DATE

LAND SURVEYOR SEAL



CERTIFIED LAND CORNER

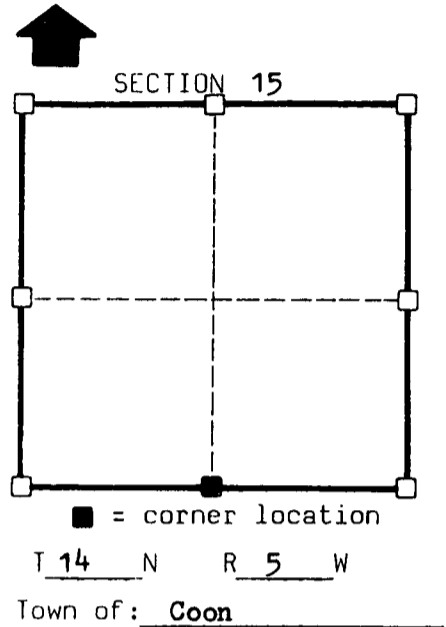
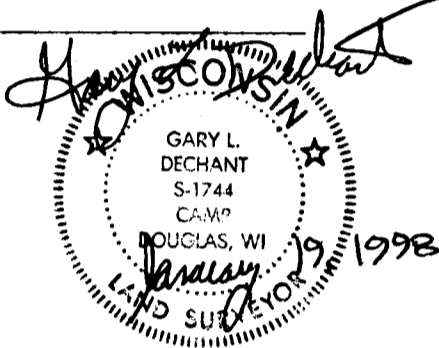
STATE OF WISCONSIN)
 COUNTY OF KERNON) S.S.

CERTIFICATE

I, Gary L. Dechant, do hereby certify that on the 14th day of Jan. 1998, I found (evidence) ~~(no evidence)~~ of the S¹/₄ corner of Section 15, T14N, R5W, Fourth Principal Meridian, and I re-established said corner according to the Wisconsin Statutes as shown and described hereon.

Dated this 19th day of January 1998

Gary L. Dechant
 R.L.S. 1744
 Title



Seal

History of original corner establishment:

Knower was here in 1888 and Sterling in 1892.

Description of corner evidence found:

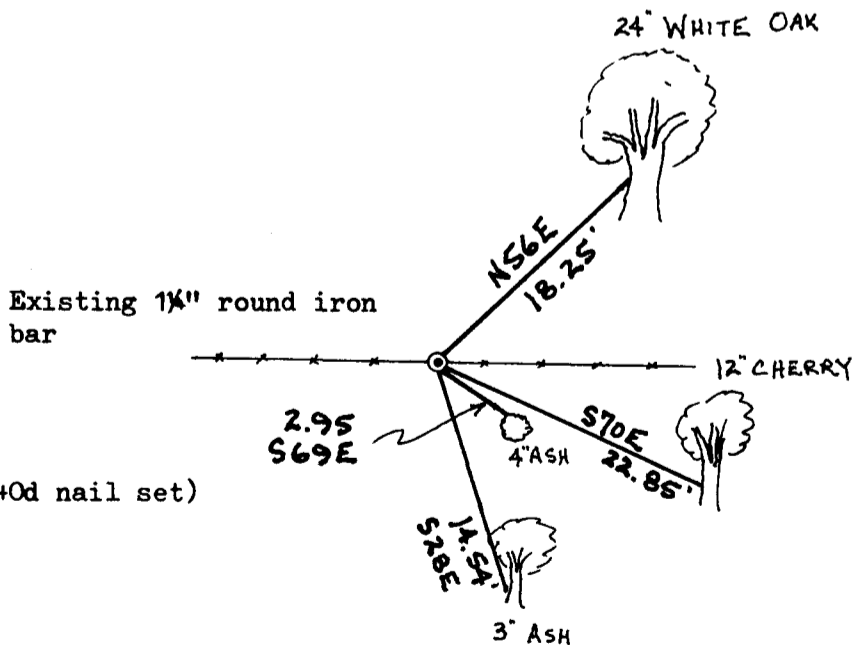
Found unrecorded 1¹/₄" iron bar at occupied fence corner.
 Fits Knower's and Sterling's measurements very well.
 Accepted the iron bar as the corner.

Description of corner and witness monuments, references and accessories used to perpetuate the original or re-established location of this corner:

Witnesses to corner location:

David E. Madison
Gary L. Dechant

Sketch:



(Trees double blazed with 40d nail set)

SURVEY CONTROL ORDER

Horizontal
Vertical

WISCONSIN COORDINATE SYSTEM

Corner	East (X)	North (Y)	Elevation (Z)	Zone
Control Sta. Name				