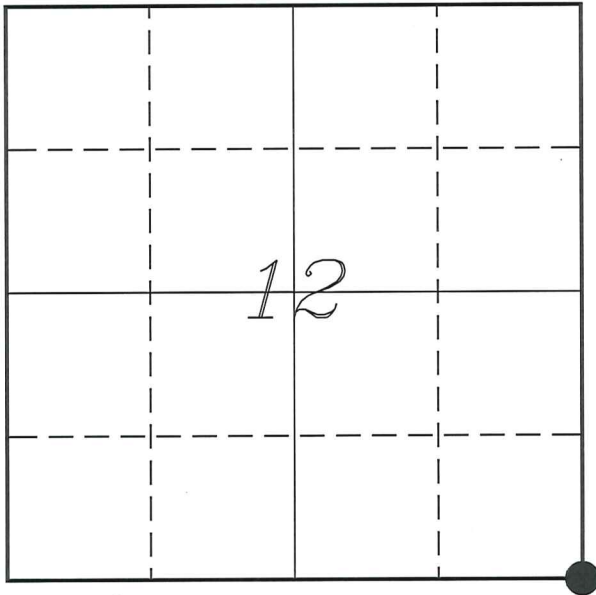

U. S. PUBLIC LAND SURVEY MONUMENT RECORD

SECTION 12, T14N, R5W, TOWN OF COON VERNON COUNTY, WISCONSIN



LOCATION OF LANDMARK

Witnesses: Laurence E Johns III

Date: 7 May 2020

VERNON COUNTY COORDINATE SYSTEM	
Northing	200313.173
Easting	696375.832
Datum	NAD 1983 (2011)
Elevation	
Datum	
TYPE OF LANDMARK:	
Set 1 1/4" x 18" Iron Rod	
BEARINGS ARE REFERENCED TO:	
Vernon County Coordinates (Survey Grade)	

Describe or show any material discrepancy between the location of the restored corner and that of the corner previously restored or re-established.

Henry Maddin established this corner in December 1846.

C M Sterling was at this corner, in December 1892, during a survey in Section 12. He shows that he found the government corner.

Ronald Parish was at this corner, in March 1985, during a survey in Section 12. He shows he found a railroad spike.

F Curtis Crook was at this corner, in December 1990, during a survey in Section 7. He shows he found a railroad spike.

Ronald Parish was at this corner, date unknown, during a survey in Section 12. He shows he found a railroad spike.

Curt Cummer was at this corner, in October 2006. He shows he found a railroad spike and prepared a tie sheet.

Todd Rummmler was at this corner, in August 2010, during a survey in Section 13. He shows he found a railroad spike.

Dwayne Hefner was at this corner, in July 2013, during a survey in Section 7. He shows he found a railroad spike.

Laurence Johns was at this corner, in June 2017, during a survey in Section 12. I show I found a railroad spike.

David Gorman was at this corner, in April 2020, during a survey in Section 13. He shows he found a railroad spike.

Describe any record evidence, monument evidence, testimonial evidence or any other material evidence you considered and whether the monument was found or restored through acceptance of an obliterated evidence location.

No bearing trees of record were located.

I found the railroad spike shown on previous surveys along with 2 of the 4 ties shown on Cummer's tie sheet.

The origination of the railroad spike is unknown but possibly set by Parish during one of his earlier surveys.

Distances seem to match earlier surveys and government notes.

I accepted the location of the railroad spike as the best available evidence of the original government corner and replaced it with a 1 1/4" iron rod.

RECEIVED
 OCT 12 2006
 BY: KS

Vernon County Certified U.S. Public Land Survey Monument Record

INSTRUCTIONS: THIS RECORD SHALL SHOW THE LOCATION OF THE CORNER AND SHALL INCLUDE ALL OF THE FOLLOWING ELEMENTS (A-I)

(A) IDENTIFY THE CORNER BY REFERENCE TO THE U.S. PUBLIC LAND SURVEY SYSTEM

■ = CORNER MONUMENT RESTORED

WITNESSES TO CORNER LOCATION:

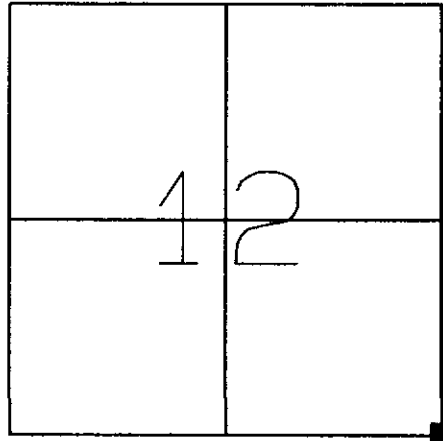
- 1) Curtis J. Cummer
- 2) Chad L. Crook
- 3) Brenda A. Crook

STATE PLANE COORDINATES (WISCONSIN SOUTH ZONE)

NORTHING:
 EASTING:

VERNON COUNTY COORDINATES

NORTHING: 200,313.31'
 EASTING: 696,375.57'



SECTION 12 TOWNSHIP 14 NORTH, RANGE 5 WEST
 TOWN OF COON

(B) DESCRIBE ANY RECORD EVIDENCE, MONUMENT EVIDENCE, OCCUPATIONAL EVIDENCE, TESTIMONIAL EVIDENCE OR ANY OTHER MATERIAL EVIDENCE YOU CONSIDERED, AND WHETHER THE MONUMENT WAS FOUND OR PLACED.

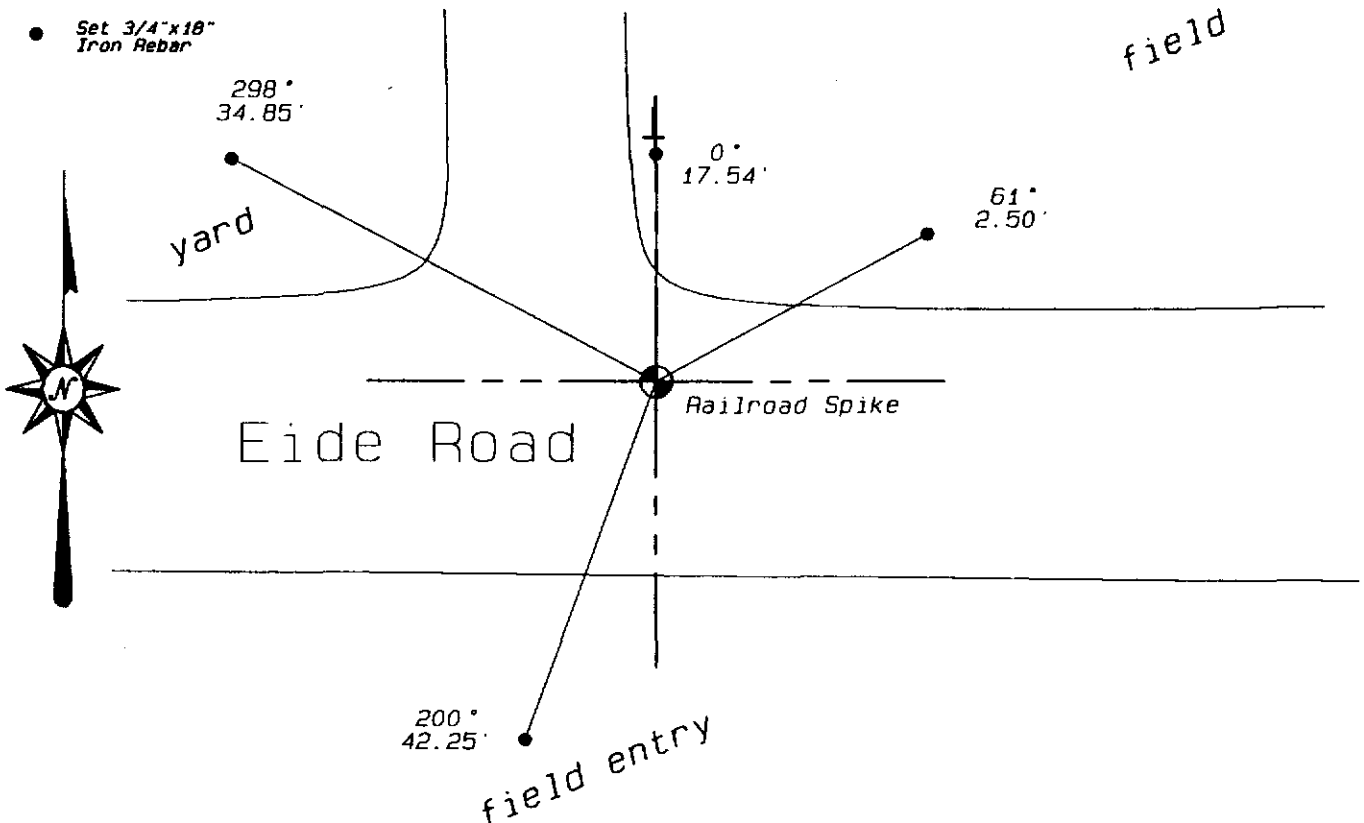
Accepted found Railroad spike as called out in previous surveys as best evidence for corner location.

(C) IN THE PLAN VIEW DRAWING BELOW, PROVIDE REFERENCE TIES TO AT LEAST 4 WITNESS MONUMENTS OR, IF THE LOCATION IS WITHIN A MUNICIPALITY, TO AT LEAST 2 WITNESS MONUMENTS. (WITNESS MONUMENTS SHALL BE MADE OF CONCRETE, NATURAL STONE, IRON, OR OTHER EQUALLY DURABLE MATERIAL.) DESCRIBE WITNESS MONUMENTS.

(D) SHOW A PLAN VIEW DRAWING, DEPICTING THE RELEVANT MONUMENTS AND REFERENCE TIES, WHICH IS SUFFICIENTLY DETAILED TO ENABLE ACCURATE RELOCATION OF THE CORNER MONUMENT IF IT IS DISTURBED.

*Azimuths are magnetic
 Not to scale*

- Set 3/4"x18" Iron Rebar



(E) DESCRIBE ANY MATERIAL DISCREPANCY BETWEEN THE LOCATION OF THE CORNER AS RESTORED OR REESTABLISHED AND THE LOCATION OF THAT CORNER AS PREVIOUSLY RESTORED OR REESTABLISHED BY DISTANCE AND DIRECTION. SHOW THE DISCREPANCY ON THE PLAN VIEW DRAWING UNDER (D), ABOVE. SHOW THE DISTANCES BETWEEN THE CORNER AS PREVIOUSLY RESTORED OR REESTABLISHED AND (1) THE CORNER AS RESTORED OR REESTABLISHED, AND (2) TO AT LEAST 2 OF THE WITNESS MONUMENTS AS SHOWN ON THE DRAWING IN (D), ABOVE.

(NA)

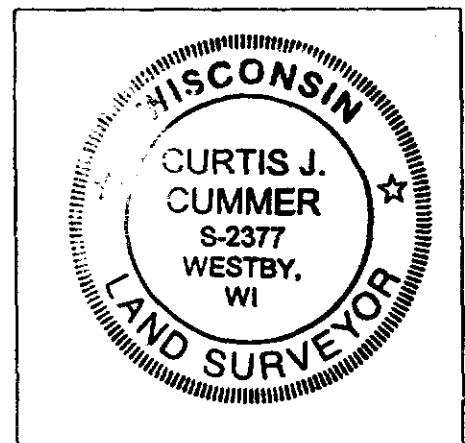
(F) WAS THE CORNER RESTORED THROUGH ACCEPTANCE OF (1) AN OBLITERATED EVIDENCE LOCATION, OR (2) A FOUND PERPETUATED LOCATION?

(2)

(G & H) WAS THE CORNER REESTABLISHED THROUGH LOST CORNER PROPORTIONATE METHODS? IF SO SHOW THE METHOD, INCLUDING THE DIRECTION AND DISTANCES TO THE OTHER PUBLIC LAND SURVEY CORNERS USED AS EVIDENCE OR USED FOR PROPORTIONING IN DETERMINING THE CORNER LOCATION.

(NA)

LAND SURVEYOR SEAL



(I) I, Curtis J. Cummer, CERTIFY THAT THE LOCATION SHOWN ON THIS RECORD WAS DETERMINED BY ME OR UNDER MY DIRECTION AND CONTROL AND THAT THIS U.S. PUBLIC LAND SURVEY MONUMENT RECORD IS CORRECT AND COMPLETE TO THE BEST OF MY KNOWLEDGE AND BELIEF.


SIGNATURE

10/12/06
DATE