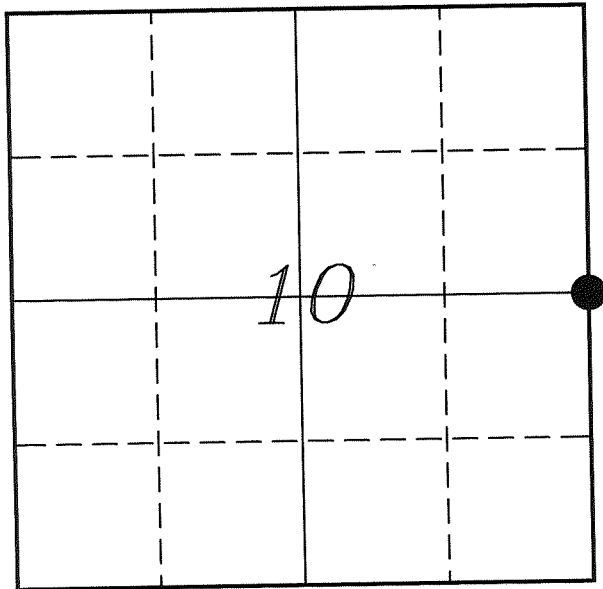


U. S. PUBLIC LAND SURVEY MONUMENT RECORD

SECTION 10, T14N, R5W, TOWN OF COON
VERNON COUNTY, WISCONSIN



LOCATION OF LANDMARK

Crew: Laurence E Johns III
Larry Handschy

Date: 7 April 2009

VERNON COUNTY COORDINATE SYSTEM	
Northing	202764.063
Easting	685870.633
Elevation	
TYPE OF LANDMARK:	
Set 1 1/4" x 18" Iron Rod	
BEARINGS ARE REFERENCED TO:	
Vernon County Coordinates	

Describe any record evidence, monument evidence, testimonial evidence or any other material evidence you considered and whether the monument was found or restored through acceptance of an obliterated evidence location.

A Brown shows one tie at this corner, states there are no other trees nearby. Wm Knower did not renew the ties to this corner during either of his surveys. No ties of record were located.

A Brown mentions in his survey notes, that he set the quarter post in a stone mound. Probably due to the rock outcropping.

A Brown gives a call to a sandstone cliff at 39.50 ch, 33' South of this corner. The current edge of the rock of the rock outcropping is approximately 35' South.

Wm Knower shows in both his surveys that there is a disproportionate distance from this corner to the East and to the West. Which would be accounted for by the significant bend in the section line.

There is an old down fence to the South and a newer fence to the North. There is no other occupation.

Accepted the split distance between the NE & SE Corners of Section 10 and the North/South fence as the best available evidence of the original government corner.

Could not set Lunde Monument due to solid rock approximately 12" down. Set 1 1/4" Iron Rod in its place.

Describe or show any material discrepancy between the location of the restored corner and that of the corner previously restored or re-established.

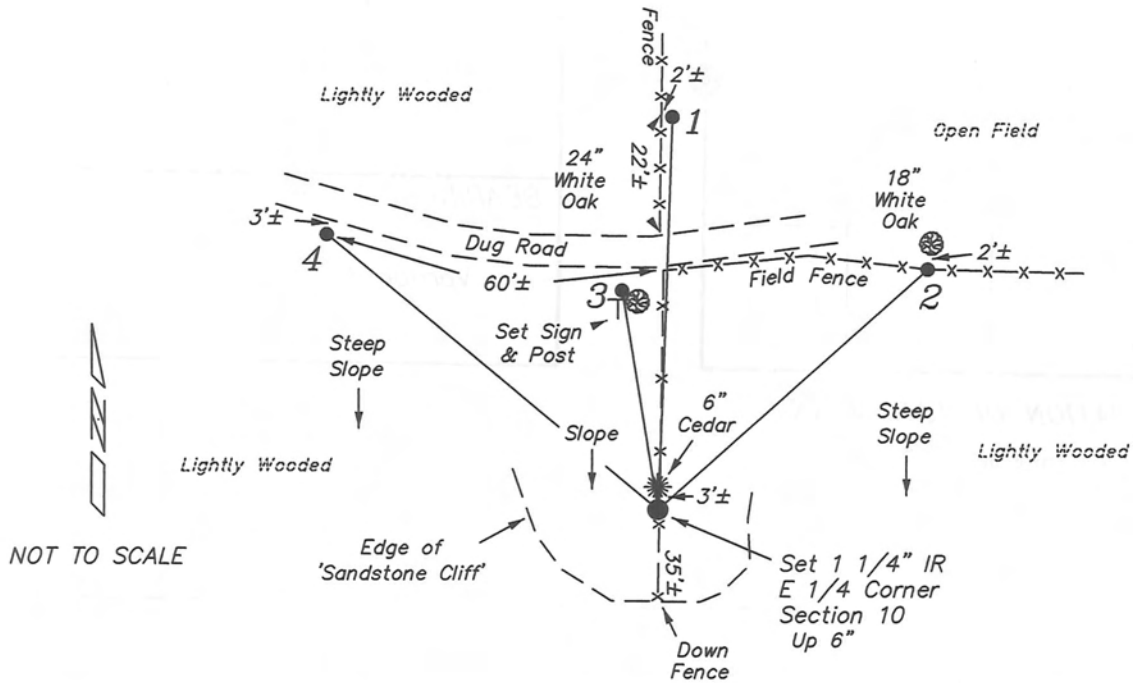
This corner was established by Alfred Brown in October 1846.

Wm Knower was here, in August 1888, during a survey of Section 10 and shows that he found the Gov't corner.

Wm Knower was here again, in October 1888, during a survey of Section 11 and shows that he found the Gov't corner.

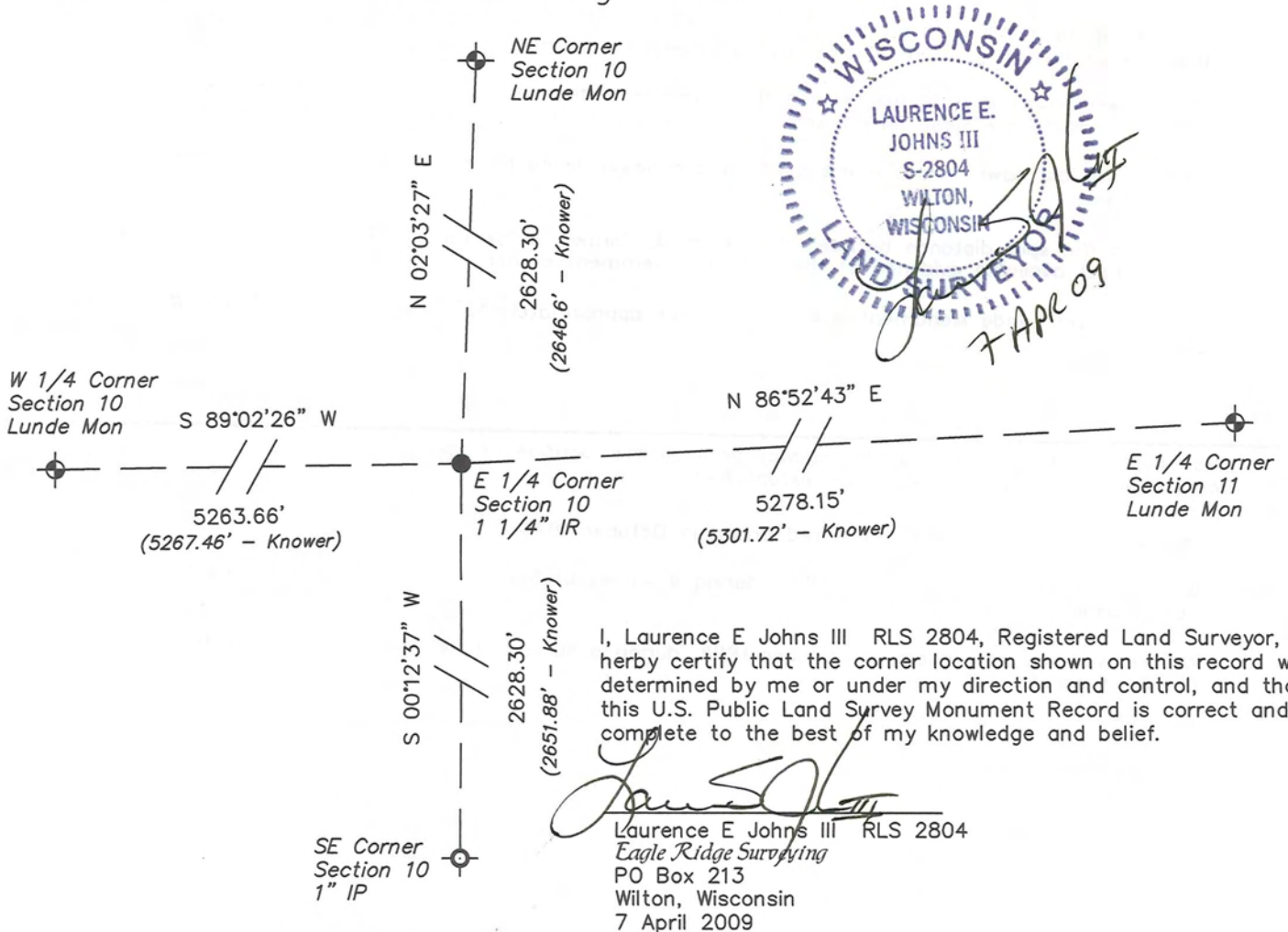
RECORD OF DURABLE WITNESS MONUMENTS

NO	DESCRIPTION	BEARING	DISTANCE
1	Set 3/4" x 18" Iron Rod On Section Line - 2' East of Fence	N 02°01'13" E	72.64'
2	Set 3/4" x 18" Iron Rod In Field Fence	N 48°11'11" E	66.68'
3	Set 3/4" x 18" Iron Rod 1' from NW Side of 24" White Oak	N 07°56'00" W	40.23'
4	Set 3/4" x 18" Iron Rod	N 50°22'31" W	79.71'




PLAN VIEW DRAWING OF REFERENCE TIES

Map Showing Distance And Direction To Other Public Land Survey Corners Used For Re-Establishing The Corner



I, Laurence E Johns III RLS 2804, Registered Land Surveyor, hereby certify that the corner location shown on this record was determined by me or under my direction and control, and that this U.S. Public Land Survey Monument Record is correct and complete to the best of my knowledge and belief.

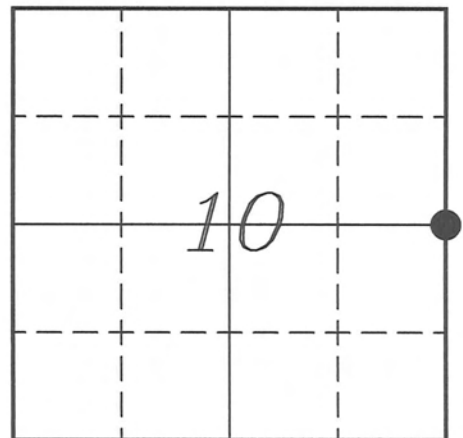

 Laurence E Johns III RLS 2804
 Eagle Ridge Surveying
 PO Box 213
 Wilton, Wisconsin
 7 April 2009

VERNON COUNTY COORDINATE SUBMISSION FORM
"As An Addendum To"
VERNON COUNTY
CERTIFIED U.S. PUBLIC LAND SURVEY MONUMENT RECORD

INSTRUCTIONS: THIS RECORD FORM SHOULD BE USED WHEN COORDINATES ARE PROVIDED FOR A PUBLIC LAND SURVEY CORNER AND SHALL INCLUDE ALL OF THE FOLLOWING ELEMENTS (A-D)

(A) IDENTIFY THE CORNER BY REFERENCE TO THE U.S. PUBLIC LAND SURVEY SYSTEM IN DIAGRAM AT RIGHT

● = CORNER MONUMENT



T 14 N, R 5 W

(B) COORDINATES:

GEOGRAPHIC (Degrees Minutes Seconds)

LATITUDE: 43° 42' 12.052" N

LONGITUDE: 90° 57' 00.713" W

ELLIPSOID HT (m): _____

DATUM: NAD 1983 (2007)

GEOID03 ADJ: -32.587

ORTHOMETRIC HT: _____

VERNON COUNTY (U.S. FEET)

Coord Quality (+/-)

NORTHING (Y): 202764.063 _____

EASTING (X): 685870.633 _____

GPS METHOD USED TO COMPUTE COORDINATES (check as applicable)

- RTK Observations Static Baselines OPUS-RS Solution OPUS-S Solution
 Combination of GPS Observations & Conventional Procedures

Was a Least Squares Adjustment Used to Compute Coordinates? Yes / No

BASE CONTROL USED FOR COORDINATE COMPUTATION

Station Name	Station Coordinates	Date/Time
<u>OPUS Control Station</u>	<u>43° 42' 26.353" N 90° 56' 40.776" W</u> <u>N - 204209.304 E - 687338.056</u>	<u>04/06/2009 - 16:09</u>
<u>Same</u>	_____	<u>04/07/2009 - 11:43</u>

(C) REASON FOR COORDINATES SUBMITTAL (check one)

- Being Filed With a New U.S. PLS Monument Record
 To Correct the Coordinates Listed on a Previously Filed PLS Monument Record
 To Provide Coordinates for Previously Filed PLS Monument Record without Coordinates
 To Provide Supplemental Coordinates for a Previously Filed PLS Monument Record


MOST RECENT PLS MONUMENT RECORD DATE:

R.L.S. WHO CREATED MOST RECENT PLS MONUMENT RECORD:

(D) AGENT(S) PERFORMING GPS OBSERVATIONS & COORDINATE COMPUTATION

- 1) LAURENCE E JOHNS III
 2) _____

I, LAURENCE E JOHNS III RLS 2804, REGISTERED LAND SURVEYOR, HEREBY CERTIFY THAT THE COORDINATES PROVIDED ON THIS RECORD WERE DETERMINED BY ME OR UNDER MY DIRECTION AND CONTROL AND THAT THIS COORDINATE SUBMISSION FORM IS CORRECT AND COMPLETE TO THE BEST OF MY KNOWLEDGE AND BELIEF.


 Laurence E Johns III RLS 2804
 Eagle Ridge Surveying
 PO Box 213
 Wilton, Wisconsin
 7 April 2009

