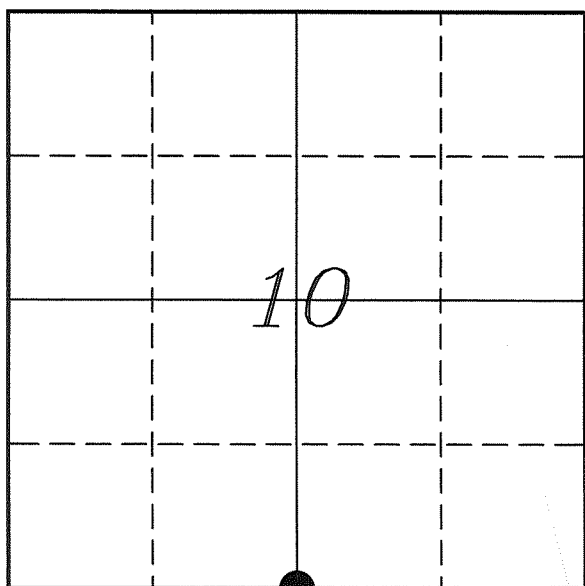

U. S. PUBLIC LAND SURVEY MONUMENT RECORD

SECTION 10, T14N, R5W, TOWN OF COON
VERNON COUNTY, WISCONSIN



LOCATION OF LANDMARK

Crew: Laurence E Johns III
Larry Handschy

Date: 8 April 2009

VERNON COUNTY COORDINATE SYSTEM	
Northing	200075.574
Easting	683197.601
Elevation	
TYPE OF LANDMARK:	
Set Lunde Monument	
BEARINGS ARE REFERENCED TO:	
Vernon County Coordinates	

Describe any record evidence, monument evidence, testimonial evidence or any other material evidence you considered and whether the monument was found or restored through acceptance of an obliterated evidence location.

Found G Dechant's Iron Pipe. Also found one of Dechant's bearing trees.

Accepted his location as the best available evidence of the original gov't corner.

Replaced his monument with a Lunde Monument.

Describe or show any material discrepancy between the location of the restored corner and that of the corner previously restored or re-established.

This corner was established by Alfred Brown in October 1846.

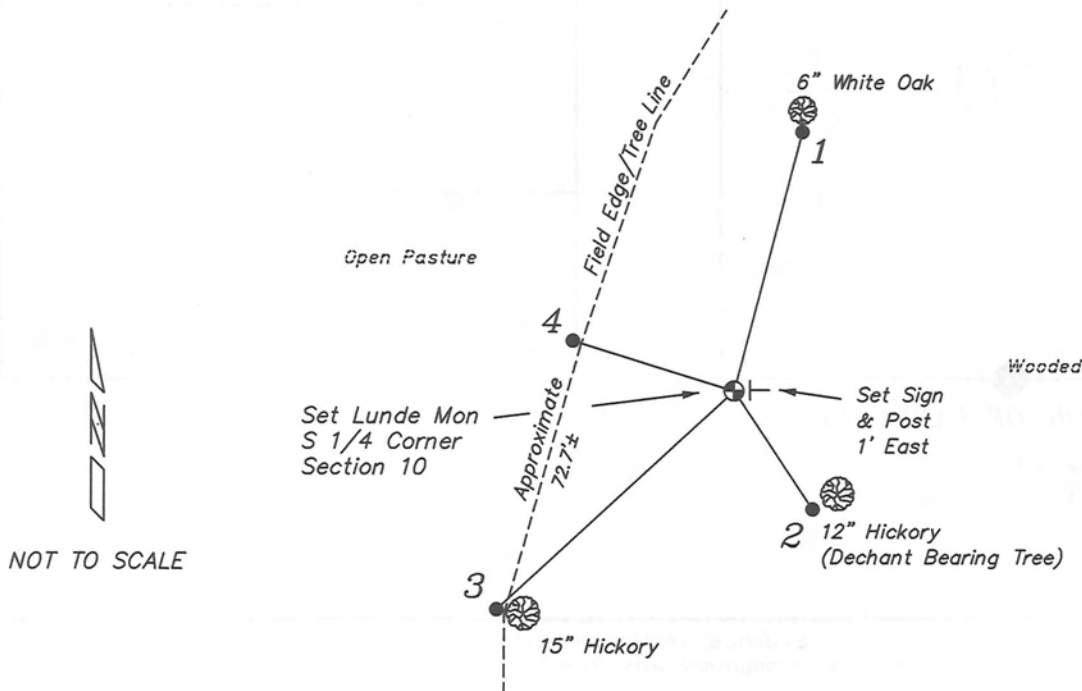
Wm Knower was here in August 1888 during a survey of Section 10 and renewed the ties on the found Gov't corner.

C M Sterling was here in June 1892 during a survey of Section 15 and found Knower's corner.

G Dechant was here in Jan 1998 and found Knower's bearing tree. He set 1 1/4" Iron Pipe at this corner.

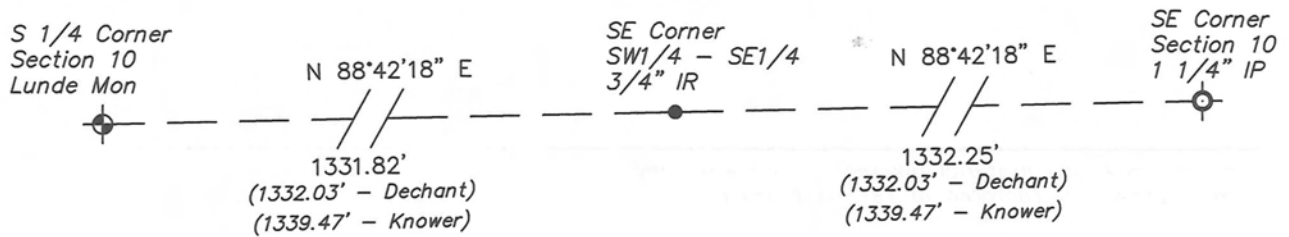
RECORD OF DURABLE WITNESS MONUMENTS

NO	DESCRIPTION	BEARING	DISTANCE
1	Set 3/4" x 18" Iron Rod South Side of a 6" White Oak	N 14°50'20" E	69.77'
2	Set 3/4" x 18" Iron Rod SW Side of a 12" Hickory	S 33°38'10" E	36.94'
3	Set 3/4" x 18" Iron Rod West Side of a 15" Hickory	S 47°22'42" W	83.97'
4	Set 3/4" x 18" Iron Rod	N 72°42'19" W	43.87'

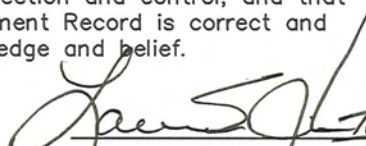


PLAN VIEW DRAWING OF REFERENCE TIES

Map Showing Distance And Direction To Other Public Land Survey Corners Used For Re-Establishing The Corner



I, Laurence E Johns III RLS 2804, Registered Land Surveyor, hereby certify that the corner location shown on this record was determined by me or under my direction and control, and that this U.S. Public Land Survey Monument Record is correct and complete to the best of my knowledge and belief.


 Laurence E Johns III RLS 2804
 Eagle Ridge Surveying
 PO Box 213
 Wilton, Wisconsin
 8 April 2009

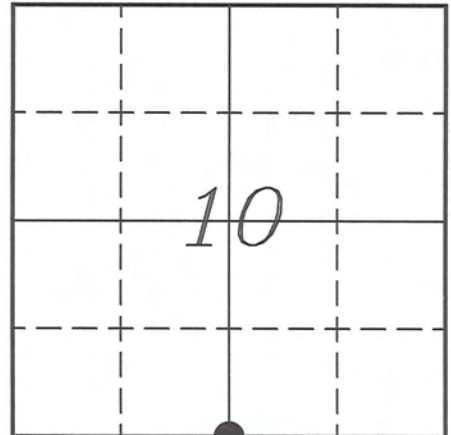


VERNON COUNTY COORDINATE SUBMISSION FORM
 "As An Addendum To"
VERNON COUNTY
CERTIFIED U.S. PUBLIC LAND SURVEY MONUMENT RECORD

INSTRUCTIONS: THIS RECORD FORM SHOULD BE USED WHEN COORDINATES ARE PROVIDED FOR A PUBLIC LAND SURVEY CORNER AND SHALL INCLUDE ALL OF THE FOLLOWING ELEMENTS (A-D)

(A) IDENTIFY THE CORNER BY REFERENCE TO THE U.S. PUBLIC LAND SURVEY SYSTEM IN DIAGRAM AT RIGHT

● = CORNER MONUMENT



T 14 N, R 5 W

(B) COORDINATES:

GEOGRAPHIC (Degrees Minutes Seconds)

LATITUDE: 43° 41' 45.447" N

LONGITUDE: 90° 57' 37.022" W

ELLIPSOID HT (m): _____

DATUM: NAD 1983 (2007)

GEOID03 ADJ: -32.547

ORTHOMETRIC HT: _____

VERNON COUNTY (U.S. FEET)

Coord Quality (+/-)

NORTHING (Y): 200075.574 _____

EASTING (X): 683197.601 _____

GPS METHOD USED TO COMPUTE COORDINATES (check as applicable)

- RTK Observations Static Baselines OPUS-RS Solution OPUS-S Solution
 Combination of GPS Observations & Conventional Procedures

Was a Least Squares Adjustment Used to Compute Coordinates? Yes / No

BASE CONTROL USED FOR COORDINATE COMPUTATION

Station Name	Station Coordinates	Date/Time
<u>OPUS Control Station</u>	<u>43° 41' 44.989" N 90° 58' 03.346" W</u> <u>N - 200033.342 E - 681263.421</u>	<u>03/30/2009 - 11:55</u>
<u>Same</u>		<u>04/07/2009 - 14:06</u>

(C) REASON FOR COORDINATES SUBMITTAL (check one)

- Being Filed With a New U.S. PLS Monument Record
 To Correct the Coordinates Listed on a Previously Filed PLS Monument Record
 To Provide Coordinates for Previously Filed PLS Monument Record without Coordinates
 To Provide Supplemental Coordinates for a Previously Filed PLS Monument Record

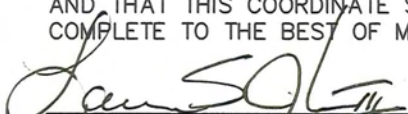
MOST RECENT PLS MONUMENT RECORD DATE:

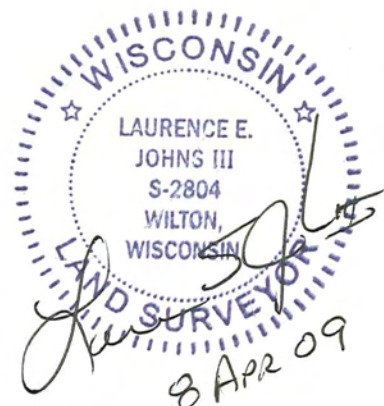
R.L.S. WHO CREATED MOST RECENT PLS MONUMENT RECORD:

(D) AGENT(S) PERFORMING GPS OBSERVATIONS & COORDINATE COMPUTATION

- 1) LAURENCE E JOHNS III
 2) _____

I, LAURENCE E JOHNS III RLS 2804, REGISTERED LAND SURVEYOR, HEREBY CERTIFY THAT THE COORDINATES PROVIDED ON THIS RECORD WERE DETERMINED BY ME OR UNDER MY DIRECTION AND CONTROL AND THAT THIS COORDINATE SUBMISSION FORM IS CORRECT AND COMPLETE TO THE BEST OF MY KNOWLEDGE AND BELIEF.


 Laurence E Johns III RLS 2804
 Eagle Ridge Surveying
 PO Box 213
 Wilton, Wisconsin
 8 April 2009



FEB 23 1998

CERTIFIED LAND CORNER

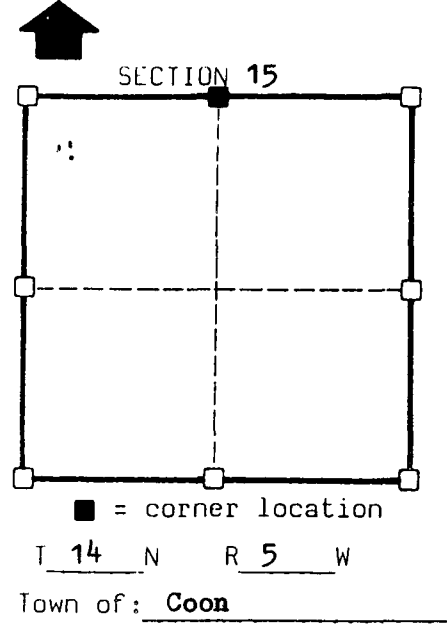
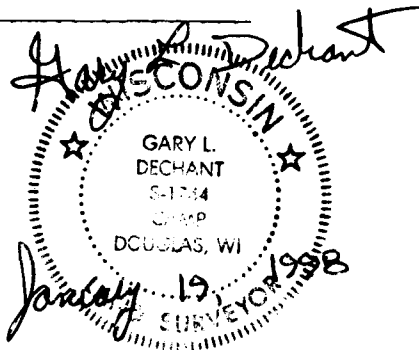
STATE OF WISCONSIN) S.S.
COUNTY OF VERNON

CERTIFICATE

I, Gary L. Dechant, do hereby certify that on the 14th day of Jan. 1998, I found (evidence) (~~no evidence~~) of the ~~NE~~ corner of Section 15, T14 N, R 5 W, Fourth Principal Meridian, and I re-established said corner according to the Wisconsin Statutes as shown and described hereon.

Dated this 19th day of January 19 98

Gary L. Dechant
R.L.S. 1744
Title



Seal

History of original corner establishment:

Knower was here in 1888 and Sterling in 1892.

Description of corner evidence found:

Found Knower's bearing tree (8" White Oak, N18E, 25.51ks) down and rotted but intact. Found a remaining piece of 8"x16" bark from the upper trunk on the underside of the tree identifying it to be white oak. Fits Knower's and Sterling's distances very well.

Description of corner and witness monuments, references and accessories used to perpetuate the original or re-established location of this corner:

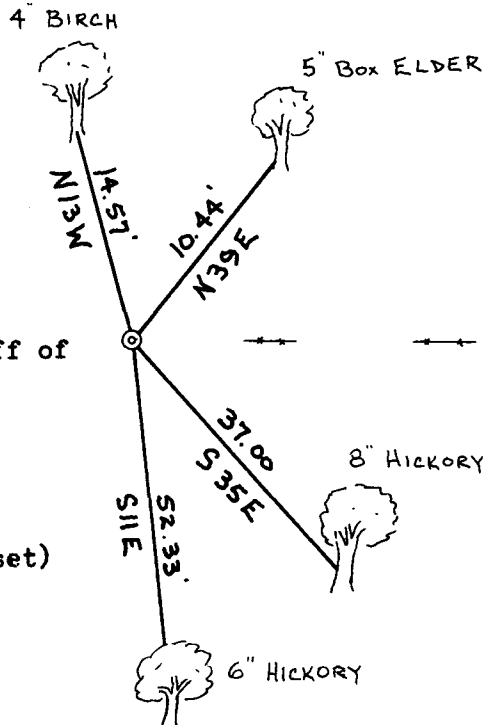
Witnesses to corner location:

David E. Madison
Gary L. Dechant

Sketch:

Set a 1 1/2" x 4" iron pipe off of Knower's bearing tree.

(Trees double blazed with 40d nail set)



SURVEY CONTROL ORDER

Table with 2 rows: Horizontal, Vertical

WISCONSIN COORDINATE SYSTEM

Table with 5 columns: Corner, East(X), North(Y), Elevation(Z), Zone