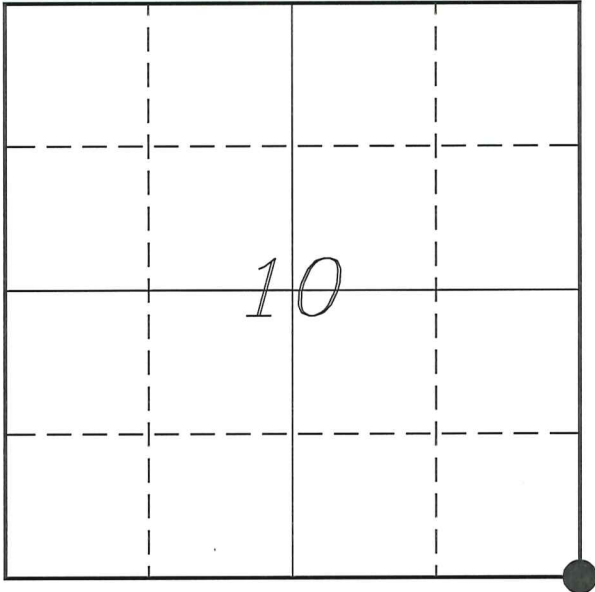


U. S. PUBLIC LAND SURVEY MONUMENT RECORD

SECTION 10, T14N, R5W, TOWN OF COON
VERNON COUNTY, WISCONSIN



LOCATION OF LANDMARK

VERNON COUNTY COORDINATE SYSTEM	
Northing	200135.645
Easting	685860.907
Datum	NAD 1983 (2011)
Elevation	
Datum	
TYPE OF LANDMARK: Set Lunde Monument 4" Brass Capped Iron Pipe	
BEARINGS ARE REFERENCED TO: Vernon County Coordinates (Survey Grade)	

Witnesses: Laurence E Johns III

Date: 21 July 2020

Describe or show any material discrepancy between the location of the restored corner and that of the corner previously restored or re-established.

Alfred L Brown established this corner in October 1846.

Wm Knower was at this corner, in August 1888 & October 1888, during surveys in Sections 10 & 11. He shows this corner was established by agreement.

C M Sterling was at this corner, in June 1892, during a survey in Section 15. He shows he found Knower's corner.

Gary Dechant was at this corner, in January 1998, during a survey in Section 15. He shows he set a 1" iron pipe based on a Knower bearing tree.

Christopher Fechner was at this corner, in October 2002, during a survey in Section 15. He shows he found a 1" iron pipe.

Laurence Johns was at this corner, in November 2010, during a survey in Section 10. I show that I found an 1 1/4" iron pipe.

Describe any record evidence, monument evidence, testimonial evidence or any other material evidence you considered and whether the monument was found or restored through acceptance of an obliterated evidence location.

No bearing trees of record were located. I was unsure of which fallen tree Dechant had determined was Knower's. Since it had been 22 years since Dechant was at this location, I figured the tree was rotten beyond recognition.

I did find the 1" iron pipe that Dechant had set. There is fence wire on the ground in the area, mostly noticeable to the East.

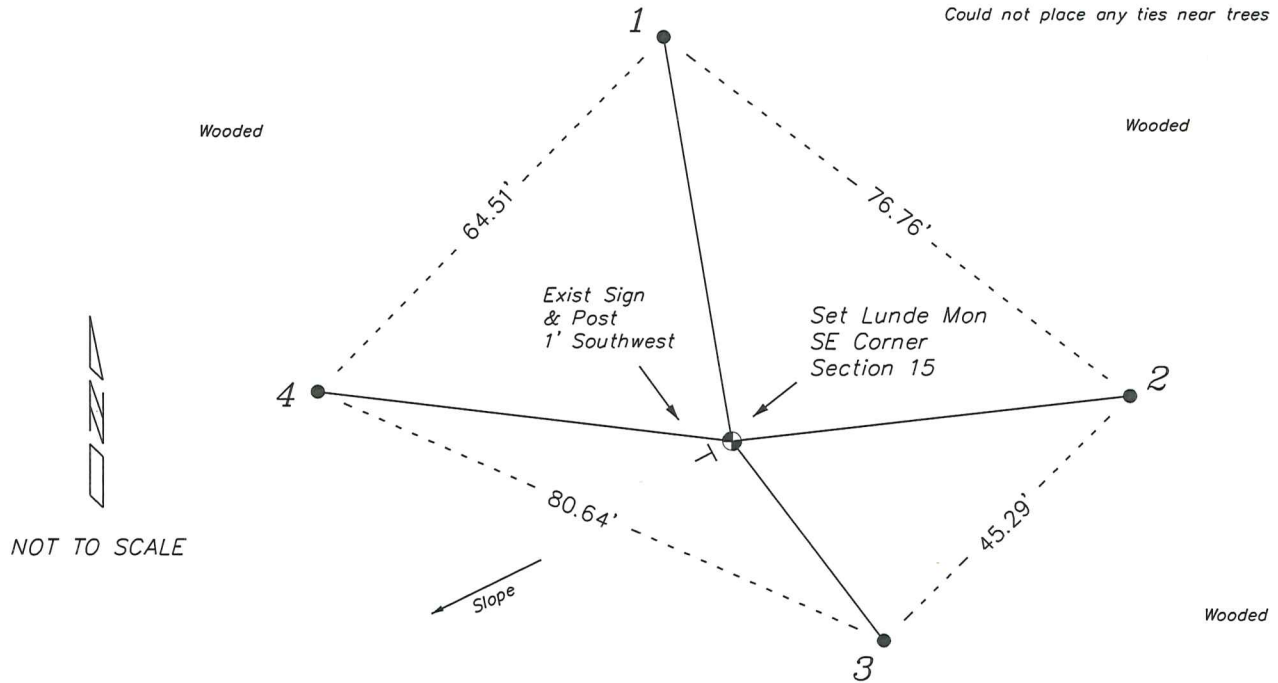
Measurements to other corners fit well with Knower's distances along with government distances.

This corner appears to fit occupation along with the older surveys.

I accepted this location as the best available evidence of the original government corner and replaced it with a Lunde monument.

RECORD OF DURABLE WITNESS MONUMENTS

NO	DESCRIPTION	BEARING	DISTANCE
1	Set 3/4" x 18" Iron Rod	N 09°36'51" W	53.43'
2	Set 3/4" x 18" Iron Rod	N 83°33'50" E	52.24'
3	Set 3/4" x 18" Iron Rod	S 37°11'41" E	32.74'
4	Set 3/4" x 18" Iron Rod	N 83°07'38" W	54.37'



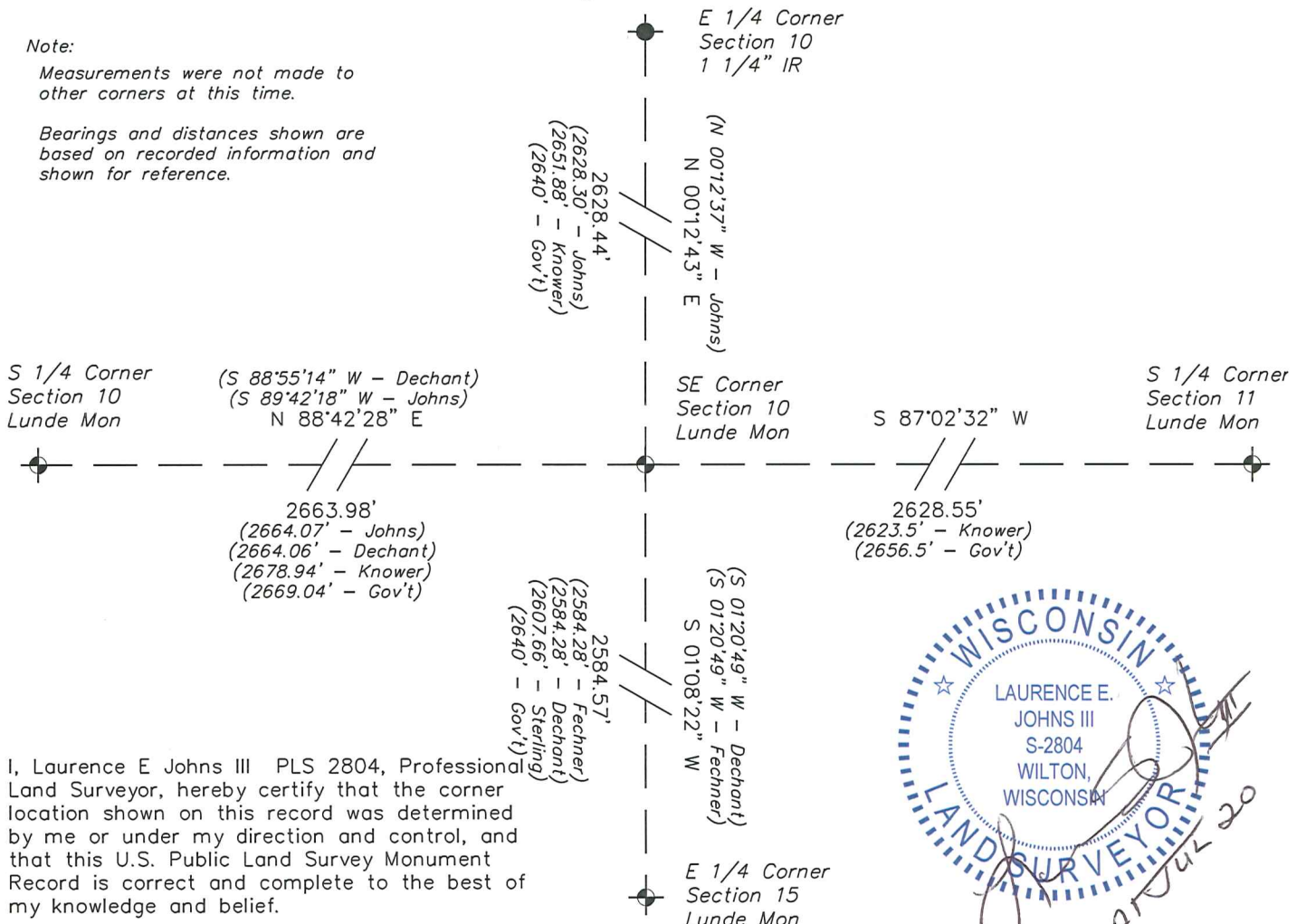
PLAN VIEW DRAWING OF REFERENCE TIES

Map Showing Distance And Direction To Other Public Land Survey
Corners Used For Re-Establishing The Corner

Note:

Measurements were not made to other corners at this time.

Bearings and distances shown are based on recorded information and shown for reference.



I, Laurence E Johns III PLS 2804, Professional Land Surveyor, hereby certify that the corner location shown on this record was determined by me or under my direction and control, and that this U.S. Public Land Survey Monument Record is correct and complete to the best of my knowledge and belief.

CERTIFIED LAND CORNER

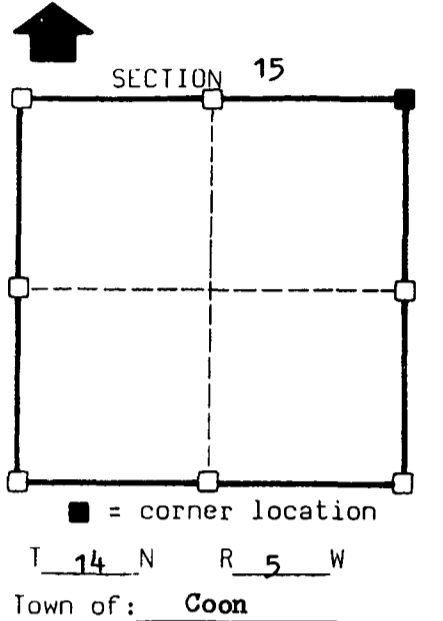
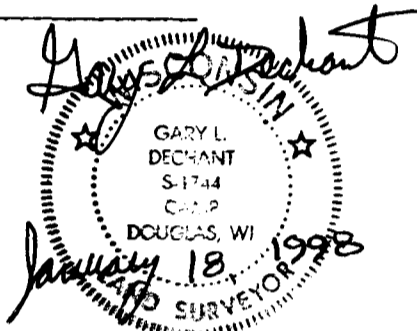
STATE OF WISCONSIN)
COUNTY OF VERNON S.S.

CERTIFICATE

I, Gary L. Dechant, do hereby certify that on the 14th day of Jan. 1998, I found (evidence) ~~(no evidence)~~ of the NE corner of Section 15, T14 N, R 5 W, Fourth Principal Meridian, and I re-established said corner according to the Wisconsin Statutes as shown and described hereon.

Dated this 18th day of January 1998

Gary L. Dechant
R.L.S. 1744
Title



Seal

History of original corner establishment:

Knower was here in 1888 and Sterling in 1892.

Found Knower's bearing tree (8" White Oak, N38E, 40 lks.) down but easily identified.

Description of corner evidence found:

Found Knower's bearing tree, set corner his recorded bearing and distance from tree. Fits in rotted post of remains of fence corner.

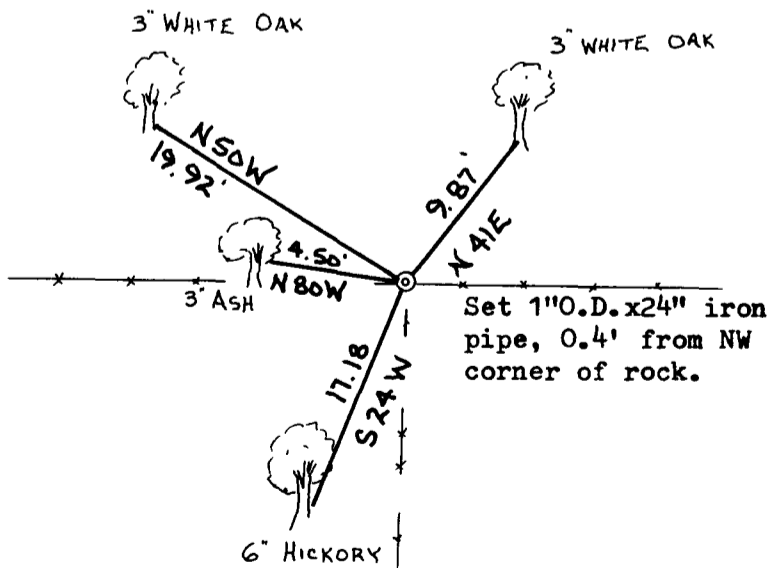
Description of corner and witness monuments, references and accessories used to perpetuate the original or re-established location of this corner:

Witnesses to corner location:

David E. Madison
Gary L. Dechant

Sketch:

(Trees double blazed with 40d nails set)



SURVEY CONTROL ORDER

Horizontal
Vertical

WISCONSIN COORDINATE SYSTEM

Corner	East (X)	North (Y)	Elevation (Z)	Zone
Control Sta. Name				

Section 15, T14N-R5W, Town of Coon
Vernon County

