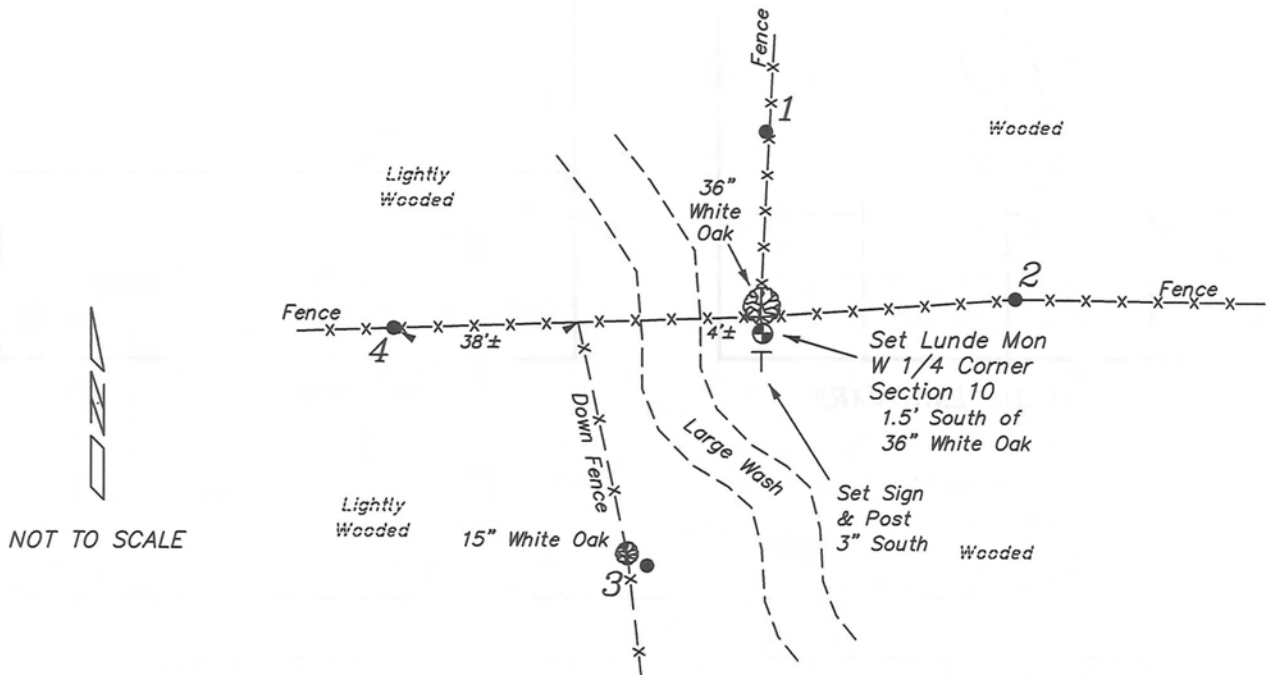
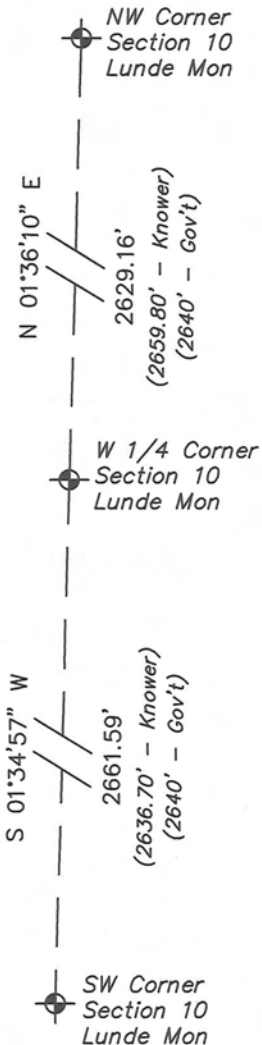


RECORD OF DURABLE WITNESS MONUMENTS

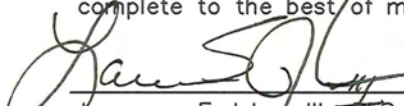
| NO | DESCRIPTION | BEARING | DISTANCE |
|----|-----------------------------------------------------|---------------|----------|
| 1 | Set 3/4" x 18" Iron Rod In Fence Line | N 01°07'52" E | 40.36' |
| 2 | Set 3/4" x 18" Iron Rod In Fence Line | N 83°59'38" E | 52.87' |
| 3 | Set 3/4" x 18" Iron Rod SE Side of 15" White Oak | S 25°39'31" W | 55.36' |
| 4 | Set 3/4" x 18" Iron Rod In Fence Line | S 89°39'13" W | 76.66' |



Map Showing Distance And Direction To Other Public Land Survey Corners Used For Re-Establishing The Corner



I, Laurence E Johns III RLS 2804, Registered Land Surveyor, herby certify that the corner location shown on this record was determined by me or under my direction and control, and that this U.S. Public Land Survey Monument Record is correct and complete to the best of my knowledge and belief.

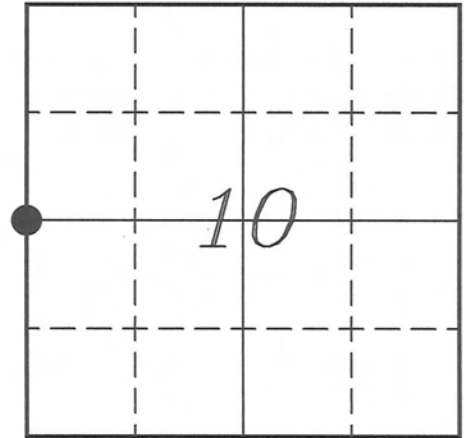

 Laurence E Johns III RLS 2804
 Eagle Ridge Surveying
 PO Box 213
 Wilton, Wisconsin
 4 April 2009

VERNON COUNTY COORDINATE SUBMISSION FORM
"As An Addendum To"
VERNON COUNTY
CERTIFIED U.S. PUBLIC LAND SURVEY MONUMENT RECORD

INSTRUCTIONS: THIS RECORD FORM SHOULD BE USED WHEN COORDINATES ARE PROVIDED FOR A PUBLIC LAND SURVEY CORNER AND SHALL INCLUDE ALL OF THE FOLLOWING ELEMENTS (A-D)

(A) IDENTIFY THE CORNER BY REFERENCE TO THE U.S. PUBLIC LAND SURVEY SYSTEM IN DIAGRAM AT RIGHT

● = CORNER MONUMENT



T 14 N, R 5 W

(B) COORDINATES:

GEOGRAPHIC (Degrees Minutes Seconds)

LATITUDE: 43° 42' 11.071" N

LONGITUDE: 90° 58' 12.351" W

ELLIPSOID HT (m): _____

DATUM: NAD 1983 (2007)

GEOID03 ADJ: -32.513

ORTHOMETRIC HT: _____

VERNON COUNTY (U.S. FEET)

Coord Quality (+/-)

NORTHING (Y): 202675.937 _____

EASTING (X): 680607.710 _____

GPS METHOD USED TO COMPUTE COORDINATES (check as applicable)

RTK Observations Static Baselines OPUS-RS Solution OPUS-S Solution
 Combination of GPS Observations & Conventional Procedures

Was a Least Squares Adjustment Used to Compute Coordinates? Yes / No

BASE CONTROL USED FOR COORDINATE COMPUTATION

| Station Name | Station Coordinates | Date/Time |
|-----------------------------|------------------------------------------------------------------------------------|---------------------------|
| <u>OPUS Control Station</u> | <u>43° 42' 28.635" N 90° 58' 12.205" W</u> <u>N - 204454.358 E - 680622.602</u> | <u>04/03/2009 - 16:38</u> |
| <u>Same</u> | _____ | <u>04/04/2009 - 12:31</u> |

(C) REASON FOR COORDINATES SUBMITTAL (check one)

Being Filed With a New U.S. PLS Monument Record
 To Correct the Coordinates Listed on a Previously Filed PLS Monument Record
 To Provide Coordinates for Previously Filed PLS Monument Record without Coordinates
 To Provide Supplemental Coordinates for a Previously Filed PLS Monument Record

MOST RECENT PLS MONUMENT RECORD DATE:

R.L.S. WHO CREATED MOST RECENT PLS MONUMENT RECORD:

(D) AGENT(S) PERFORMING GPS OBSERVATIONS & COORDINATE COMPUTATION

1) LAURENCE E JOHNS III
 2) _____

I, LAURENCE E JOHNS III RLS 2804, REGISTERED LAND SURVEYOR, HEREBY CERTIFY THAT THE COORDINATES PROVIDED ON THIS RECORD WERE DETERMINED BY ME OR UNDER MY DIRECTION AND CONTROL AND THAT THIS COORDINATE SUBMISSION FORM IS CORRECT AND COMPLETE TO THE BEST OF MY KNOWLEDGE AND BELIEF.

Laurence E Johns III RLS 2804
 Eagle Ridge Surveying
 PO Box 213
 Wilton, Wisconsin
 4 April 2009

