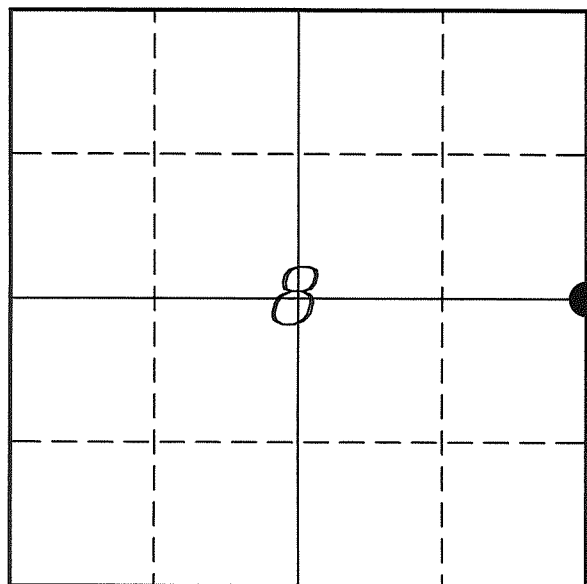


U. S. PUBLIC LAND SURVEY MONUMENT RECORD

SECTION 8, T14N, R5W, TOWN OF COON VERNON COUNTY, WISCONSIN



| VERNON COUNTY COORDINATE SYSTEM | |
|---------------------------------|-----------------|
| Northing | 202559.377 |
| Easting | 675364.472 |
| Datum | NAD 1983 (2007) |
| Elevation | |
| Datum | |
| TYPE OF LANDMARK: | |
| Set Lunde Monument | |
| BEARINGS ARE REFERENCED TO: | |
| Vernon County Coordinates | |

LOCATION OF LANDMARK

Crew: Laurence E Johns III
Larry Handschy

Date: 29 March 2010

Describe any record evidence, monument evidence, testimonial evidence or any other material evidence you considered and whether the monument was found or restored through acceptance of an obliterated evidence location.

No bearing trees of record were located.

No evidence of the mound and pit from the original survey.

Since the SE Corner of Section 8 was established as being on a straight line between the NE Corner of Section 8 and the SE Corner of Section 17. I followed that reasoning in determining this corner.

The North/South fence at this location does line up on a straight line from the NE of Section 8 and the SE of Section 8, giving more evidence to that reasoning as well.

The fence corner was 10'± North of the single prorated location.

After measuring along fences to the East and the centerline of CTH 'P' where it follows the quarterline West of here, I found that the fence corner was too far North and the prorated location was too far South.

Set the Lunde Monument at the location that best fits the line between the E 1/4 Corner and occupied center of Section 9 and the line between the W 1/4 Corner and occupation along the East/West quarter line of Section 8, and online between the NE & SE Corners of Section 8.

This location is 4'± South of the fence corner and 6'± North of the prorated location.

Describe or show any material discrepancy between the location of the restored corner and that of the corner previously restored or re-established.

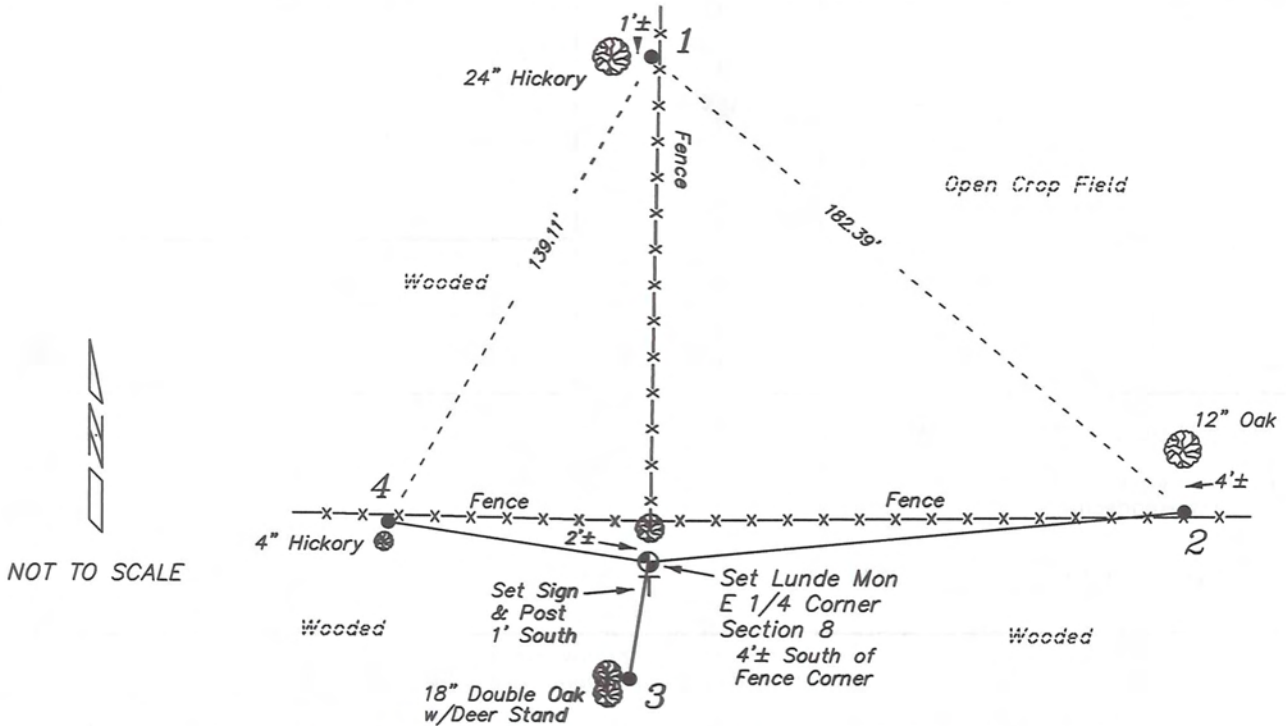
Alfred Brown established this corner in October 1846.

Wm Knower was through here, in June 1887, during a survey in Sections 5 & 8. He used the SE Corner of Section 17 and the E 1/4 Corner of Section 5 to re-establish this corner.

CM Sterling was through here as well, in November 1892, during a survey in Section 9. He found the government corner.

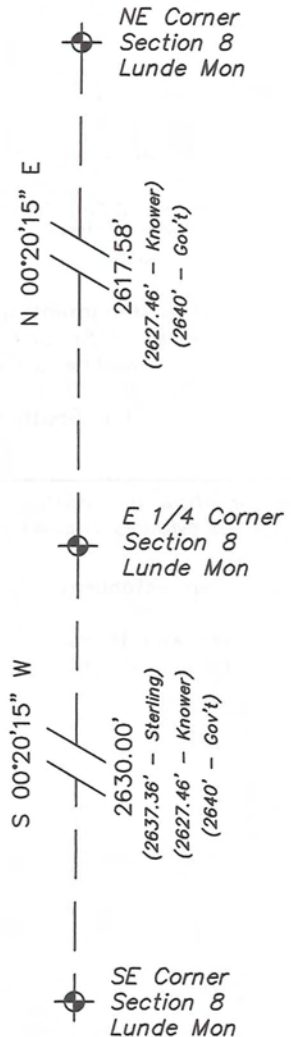
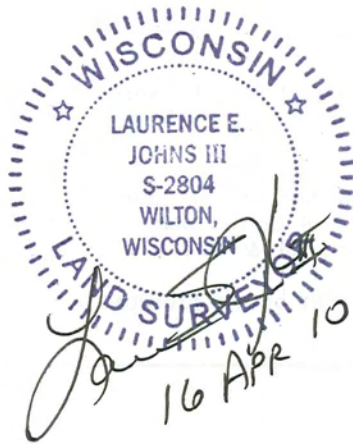
RECORD OF DURABLE WITNESS MONUMENTS

| NO | DESCRIPTION | BEARING | DISTANCE |
|----|---|---------------|----------|
| 1 | Set 3/4" x 18" Iron Rod In Fence/1' East of a 24" Hickory | N 00°03'46" W | 127.48' |
| 2 | Set 3/4" x 18" Iron Rod In Fence/4' South of a 12" Oak | N 86°05'09" E | 139.29' |
| 3 | Set 3/4" x 18" Iron Rod East Side of North Fork/Double Oak | S 08°58'20" W | 34.87' |
| 4 | Set 3/4" x 18" Iron Rod In Fence/1' North of a 4" Hickory | N 84°48'07" W | 68.59' |

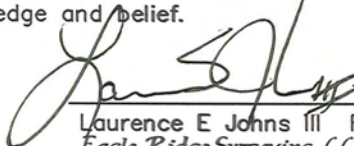


PLAN VIEW DRAWING OF REFERENCE TIES

Map Showing Distance And Direction To Other Public Land Survey
Corners Used For Re-Establishing The Corner



I, Laurence E Johns III RLS 2804, Registered Land Surveyor, hereby certify that the corner location shown on this record was determined by me or under my direction and control, and that this U.S. Public Land Survey Monument Record is correct and complete to the best of my knowledge and belief.

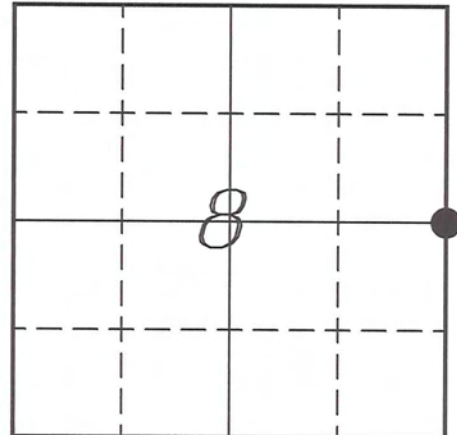

 Laurence E Johns III RLS 2804
 Eagle Ridge Surveying, LLC
 PO Box 213
 Wilton, Wisconsin
 2 April 2010
 Revised
 16 April 2010

VERNON COUNTY COORDINATE SUBMISSION FORM
"As An Addendum To"
VERNON COUNTY
CERTIFIED U.S. PUBLIC LAND SURVEY MONUMENT RECORD

INSTRUCTIONS: THIS RECORD FORM SHOULD BE USED WHEN COORDINATES ARE PROVIDED FOR A PUBLIC LAND SURVEY CORNER AND SHALL INCLUDE ALL OF THE FOLLOWING ELEMENTS (A-D)

(A) IDENTIFY THE CORNER BY REFERENCE TO THE U.S. PUBLIC LAND SURVEY SYSTEM IN DIAGRAM AT RIGHT

● = CORNER MONUMENT



T 14 N, R 5 W

(B) COORDINATES:

GEOGRAPHIC (Degrees Minutes Seconds)

LATITUDE: 43° 42' 09.7978" N

LONGITUDE: 90° 59' 23.7209" W

ELLIPSOID HT (m): _____

DATUM: NAD 1983 (2007)

GEOID99 ADJ: -32.442

ORTHOMETRIC HT: _____

VERNON COUNTY (U.S. FEET)

Coord Quality (+/-)

NORTHING (Y): 202559.377 _____

EASTING (X): 675364.472 _____

GPS METHOD USED TO COMPUTE COORDINATES (check as applicable)

- RTK Observations Static Baselines OPUS-RS Solution OPUS-S Solution
 Combination of GPS Observations & Conventional Procedures

Was a Least Squares Adjustment Used to Compute Coordinates? Yes / No

BASE CONTROL USED FOR COORDINATE COMPUTATION

| Station Name | Station Coordinates | Date/Time |
|-------------------------------|--|---------------------------|
| <u>OPUS Control Sta T2092</u> | <u>43° 41' 44.989" N 90° 58' 03.346" W</u> <u>N - 200033.342 E - 681263.421</u> | <u>03/29/2010 - 09:31</u> |
| <u>Same</u> | | <u>04/02/2010 - 12:15</u> |

(C) REASON FOR COORDINATES SUBMITTAL (check one)

- Being Filed With a New U.S. PLS Monument Record
 To Correct the Coordinates Listed on a Previously Filed PLS Monument Record
 To Provide Coordinates for Previously Filed PLS Monument Record without Coordinates
 To Provide Supplemental Coordinates for a Previously Filed PLS Monument Record

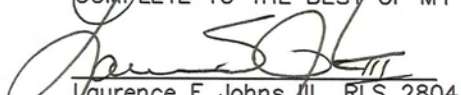
MOST RECENT PLS MONUMENT RECORD DATE:

R.L.S. WHO CREATED MOST RECENT PLS MONUMENT RECORD:

(D) AGENT(S) PERFORMING GPS OBSERVATIONS & COORDINATE COMPUTATION

- 1) LAURENCE E JOHNS III
 2) _____

I, LAURENCE E JOHNS III RLS 2804, REGISTERED LAND SURVEYOR, HEREBY CERTIFY THAT THE COORDINATES PROVIDED ON THIS RECORD WERE DETERMINED BY ME OR UNDER MY DIRECTION AND CONTROL AND THAT THIS COORDINATE SUBMISSION FORM IS CORRECT AND COMPLETE TO THE BEST OF MY KNOWLEDGE AND BELIEF.


 Laurence E Johns III RLS 2804
 Eagle Ridge Surveying
 PO Box 213
 Wilton, Wisconsin
 2 April 2009

