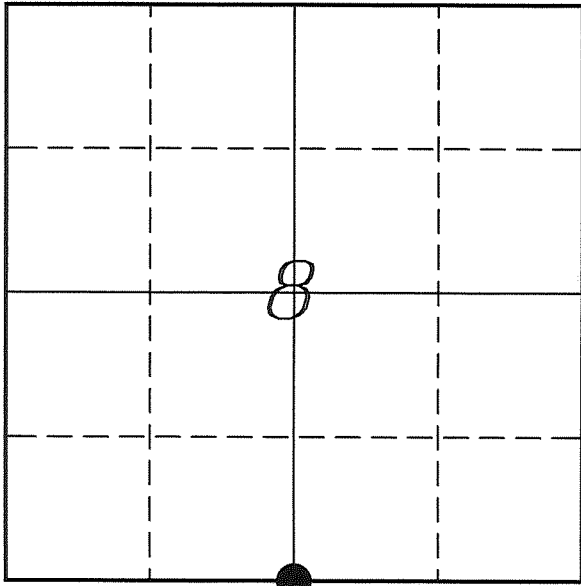


---

# U. S. PUBLIC LAND SURVEY MONUMENT RECORD

---

## SECTION 8, T14N, R5W, TOWN OF COON VERNON COUNTY, WISCONSIN



LOCATION OF LANDMARK

Crew: Laurence E Johns III  
Larry Handschy

Date: 25 March 2010

VERNON COUNTY COORDINATE SYSTEM	
Northing	199876.174
Easting	672691.384
Datum	NAD 1983 (2007)
Elevation	
Datum	
TYPE OF LANDMARK:	
Set Lunde Monument	
BEARINGS ARE REFERENCED TO:	
Vernon County Coordinates	

---

*Describe any record evidence, monument evidence, testimonial evidence or any other material evidence you considered and whether the monument was found or restored through acceptance of an obliterated evidence location.*

Brown mentions setting the quarter corner in a mound of sandstone on hill 300 ft high, with difficult chaining.

Could not locate any bearing trees of record.

The straight line-prorated distance lands 2'± South of the fence line. There is no occupation to the North or South in this area.

Was difficult putting the corner in the location I preferred because of the rocky terrain. The final location of the monument is as close as i could get to the fence and the split distance between the SE & SW Corners.

This location does have several fairly large sandstone rocks around it (not sure if this could be the mound called for in original notes).

I accepted this location as the best available evidence of the original government corner.

---

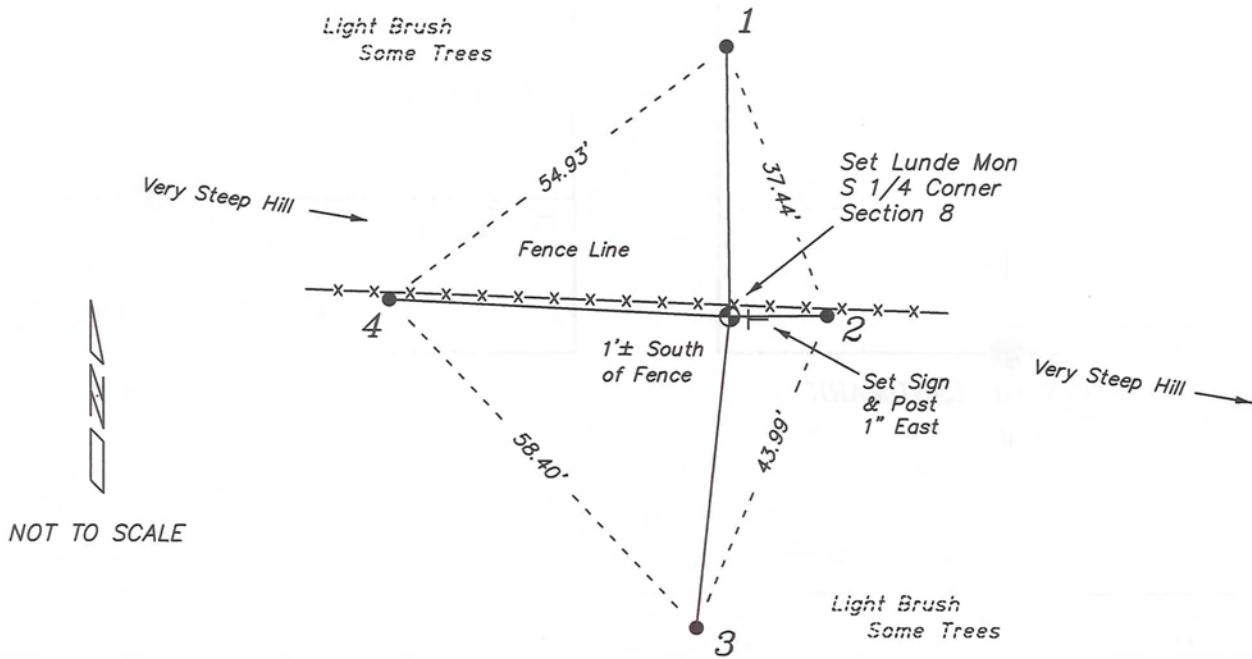
*Describe or show any material discrepancy between the location of the restored corner and that of the corner previously restored or re-established.*

Alfred Brown established this corner in October 1846.

Wm Knower was here, in June 1887, during a survey in Sections 5 & 8. He found the government corner and renewed the ties.

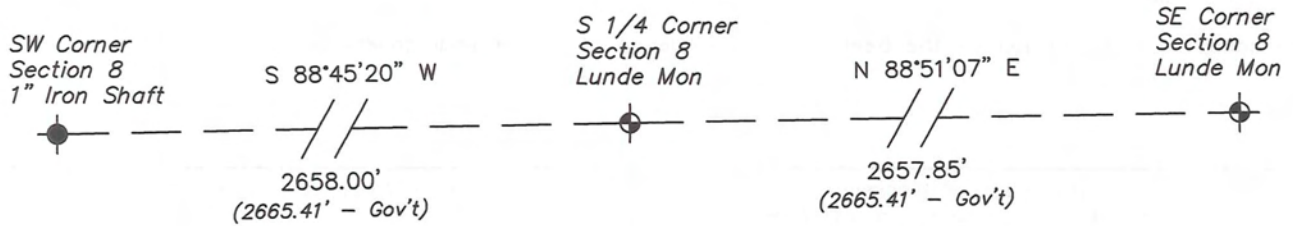
## RECORD OF DURABLE WITNESS MONUMENTS

NO	DESCRIPTION	BEARING	DISTANCE
1	Set 3/4" x 18" Iron Rod	N 00°39'35" W	35.20'
2	Set 3/4" x 18" Iron Rod In Fence Line	N 89°26'10" E	12.71'
3	Set 3/4" x 18" Iron Rod	S 06°03'57" W	40.68'
4	Set 3/4" x 18" Iron Rod In Fence Line	N 87°15'05" W	44.32'

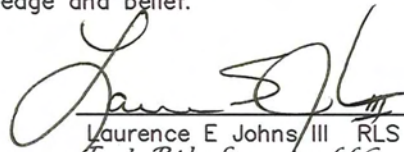


### PLAN VIEW DRAWING OF REFERENCE TIES

Map Showing Distance And Direction To Other Public Land Survey  
Corners Used For Re-Establishing The Corner



I, Laurence E Johns III RLS 2804, Registered Land Surveyor, hereby certify that the corner location shown on this record was determined by me or under my direction and control, and that this U.S. Public Land Survey Monument Record is correct and complete to the best of my knowledge and belief.

  
 Laurence E Johns III RLS 2804  
 Eagle Ridge Surveying, LLC  
 PO Box 213  
 Wilton, Wisconsin  
 25 March 2010

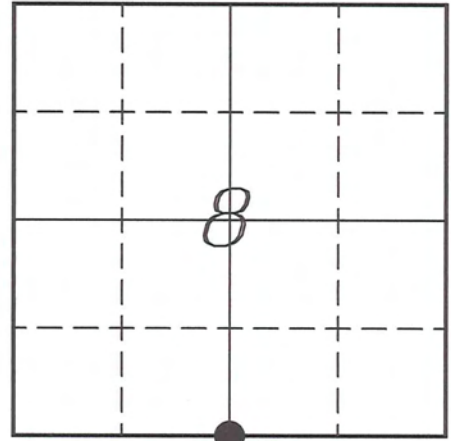


**VERNON COUNTY COORDINATE SUBMISSION FORM**  
**"As An Addendum To"**  
**VERNON COUNTY**  
**CERTIFIED U.S. PUBLIC LAND SURVEY MONUMENT RECORD**

INSTRUCTIONS: THIS RECORD FORM SHOULD BE USED WHEN COORDINATES ARE PROVIDED FOR A PUBLIC LAND SURVEY CORNER AND SHALL INCLUDE ALL OF THE FOLLOWING ELEMENTS (A-D)

(A) IDENTIFY THE CORNER BY REFERENCE TO THE U.S. PUBLIC LAND SURVEY SYSTEM IN DIAGRAM AT RIGHT

● = CORNER MONUMENT



T 14 N, R 5 W

(B) COORDINATES:

GEOGRAPHIC (Degrees Minutes Seconds)

LATITUDE: 43° 41' 43.2326" N

LONGITUDE: 91° 00' 00.0128" W

ELLIPSOID HT (m): \_\_\_\_\_

DATUM: NAD 1983 (2007)

GEOID03 ADJ: -32.399

ORTHOMETRIC HT: \_\_\_\_\_

VERNON COUNTY (U.S. FEET)

NORTHING (Y): 199876.174

EASTING (X): 672691.384

Coord Quality (+/-) \_\_\_\_\_

GPS METHOD USED TO COMPUTE COORDINATES (check as applicable)

- RTK Observations     Static Baselines     OPUS-RS Solution     OPUS-S Solution  
 Combination of GPS Observations & Conventional Procedures

Was a Least Squares Adjustment Used to Compute Coordinates? Yes /  No

BASE CONTROL USED FOR COORDINATE COMPUTATION

Station Name	Station Coordinates	Date/Time
<u>COON W GPS</u>	<u>43° 40' 51.9083" N    90° 59' 35.7184" W</u> <u>N - 194674.506    E - 674463.195</u>	<u>03/25/2010 - 12:42</u>
<u>Same</u>	_____	<u>03/29/2010 - 11:25</u>

(C) REASON FOR COORDINATES SUBMITTAL (check one)

- Being Filed With a New U.S. PLS Monument Record  
 To Correct the Coordinates Listed on a Previously Filed PLS Monument Record  
 To Provide Coordinates for Previously Filed PLS Monument Record without Coordinates  
 To Provide Supplemental Coordinates for a Previously Filed PLS Monument Record

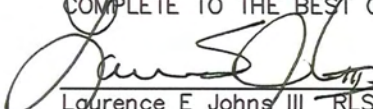
MOST RECENT PLS MONUMENT RECORD DATE:

R.L.S. WHO CREATED MOST RECENT PLS MONUMENT RECORD:

(D) AGENT(S) PERFORMING GPS OBSERVATIONS & COORDINATE COMPUTATION

- 1) LAURENCE E JOHNS III  
 2) \_\_\_\_\_

I, LAURENCE E JOHNS III RLS 2804, REGISTERED LAND SURVEYOR, HEREBY CERTIFY THAT THE COORDINATES PROVIDED ON THIS RECORD WERE DETERMINED BY ME OR UNDER MY DIRECTION AND CONTROL AND THAT THIS COORDINATE SUBMISSION FORM IS CORRECT AND COMPLETE TO THE BEST OF MY KNOWLEDGE AND BELIEF.

  
 Laurence E Johns III RLS 2804  
 Eagle Ridge Surveying, LLC  
 PO Box 213  
 Wilton, Wisconsin  
 29 March 2010

