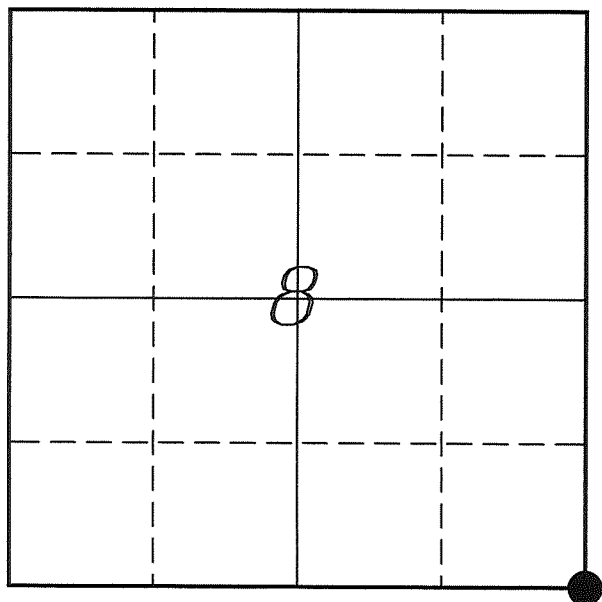


U. S. PUBLIC LAND SURVEY MONUMENT RECORD

SECTION 8, T14N, R5W, TOWN OF COON VERNON COUNTY, WISCONSIN



LOCATION OF LANDMARK

Crew: Laurence E Johns III
Larry Handschy

Date: 22 March 2010

VERNON COUNTY COORDINATE SYSTEM	
Northing	199929.423
Easting	675348.702
Datum	NAD 1983 (2007)
Elevation	
Datum	
TYPE OF LANDMARK:	
Set Lunde Monument	
BEARINGS ARE REFERENCED TO:	
Vernon County Coordinates	

Describe any record evidence, monument evidence, testimonial evidence or any other material evidence you considered and whether the monument was found or restored through acceptance of an obliterated evidence location.

Corner lands in corn field. Same land owner on all four sides.

Since Knower and Sterling both had re-established this corner by running straight lines North and South.

Since the SE Corner of Section 17 and the NE Corner of Section 8 had been previously been re-established, I used these corners as a starting point.

The straight line between these two corners fits occupation at the 1/4-Corners to the North and South very well. The split distance fits with the occupied fence line to the West to within half of a foot.

Since occupation supports this location very well, I accepted the straight line - single prorated location as the best possible location of the original corner as determined by Knower and Sterling.

I set the Lunde Monument in a corn field 16" below the surface.

Describe or show any material discrepancy between the location of the restored corner and that of the corner previously restored or re-established.

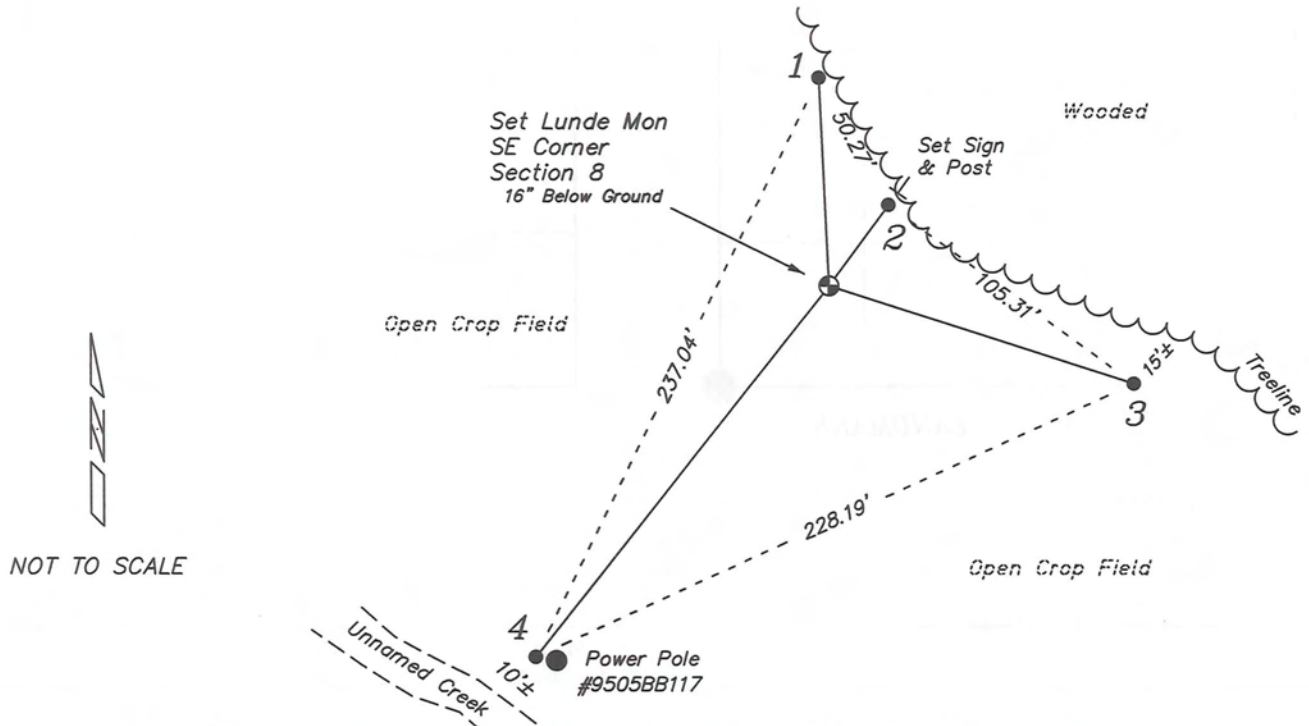
Alfred Brown established this corner in October 1846.

Wm Knower was through here, in June 1887, during a survey in Sections 5 & 8. He used the SE Corner of Section 17 and the E 1/4 Corner of Section 5 to re-establish this corner.

CM Sterling was through here as well, in November 1892, during a survey in Section 9. He had to re-establish the corner as well, and used the same procedure as Knower.

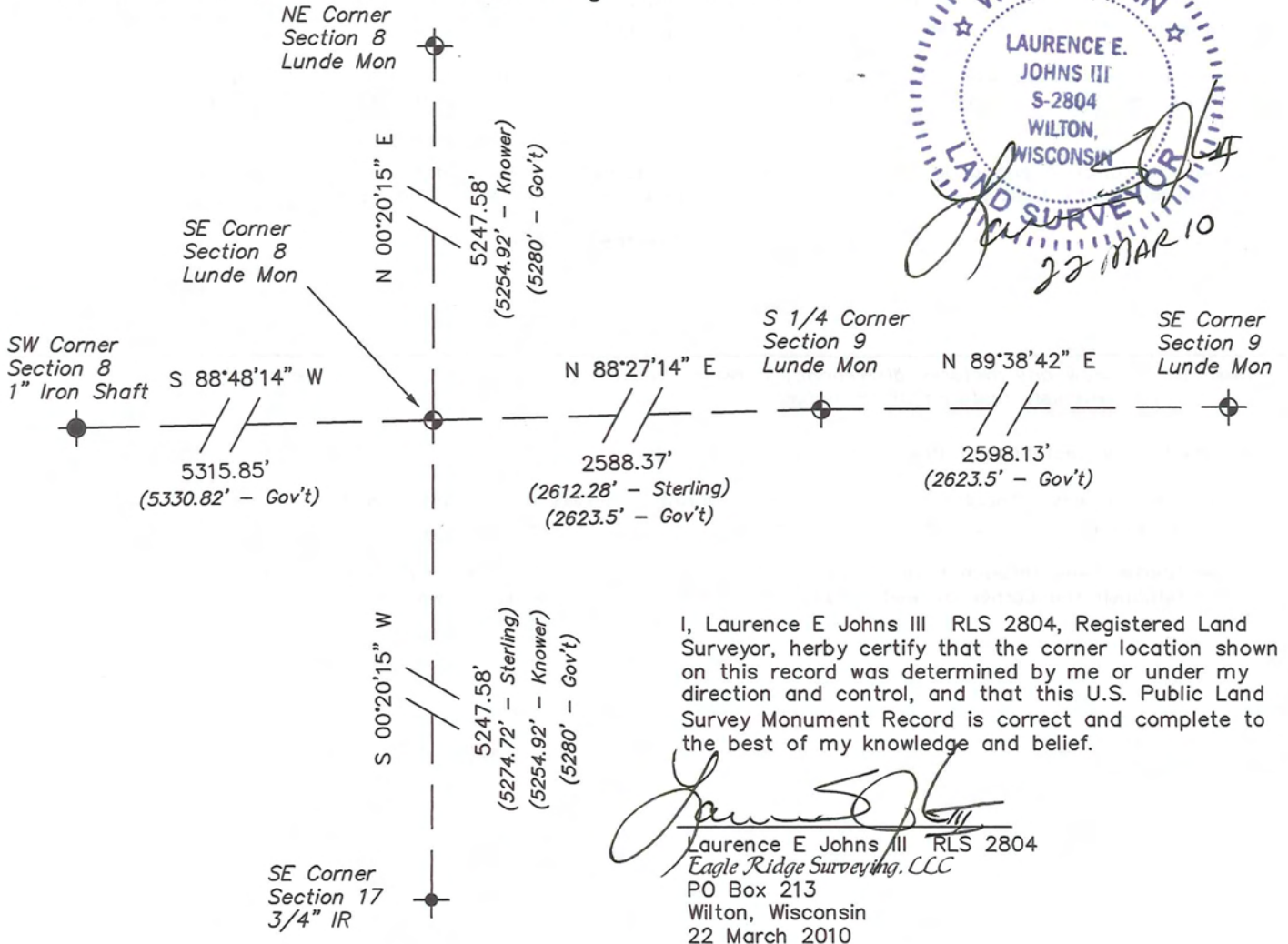
RECORD OF DURABLE WITNESS MONUMENTS

NO	DESCRIPTION	BEARING	DISTANCE
1	Set 3/4" x 18" Iron Rod 1' North of a 5" Maple	N 02°45'58" W	72.33'
2	Set 3/4" x 18" Iron Rod Next to Sign	N 36°17'41" E	34.95'
3	Set 3/4" x 18" Iron Rod	S 72°09'59" E	111.02'
4	Set 3/4" x 18" Iron Rod 1' West of Power Pole #9505BB117	S 38°24'20" W	227.03'

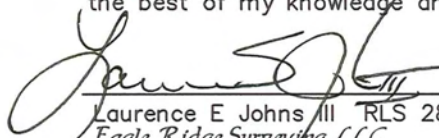


PLAN VIEW DRAWING OF REFERENCE TIES

Map Showing Distance And Direction To Other Public Land Survey Corners Used For Re-Establishing The Corner



I, Laurence E Johns III RLS 2804, Registered Land Surveyor, hereby certify that the corner location shown on this record was determined by me or under my direction and control, and that this U.S. Public Land Survey Monument Record is correct and complete to the best of my knowledge and belief.

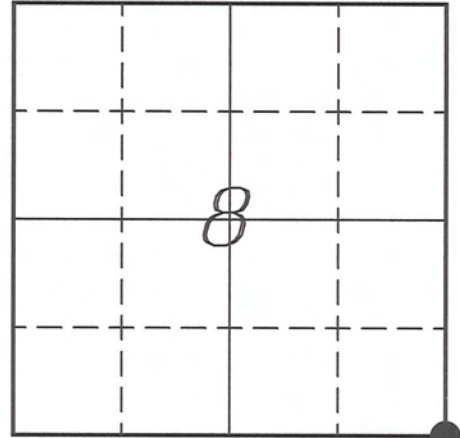

 Laurence E Johns III RLS 2804
 Eagle Ridge Surveying, LLC
 PO Box 213
 Wilton, Wisconsin
 22 March 2010

VERNON COUNTY COORDINATE SUBMISSION FORM
"As An Addendum To"
VERNON COUNTY
CERTIFIED U.S. PUBLIC LAND SURVEY MONUMENT RECORD

INSTRUCTIONS: THIS RECORD FORM SHOULD BE USED WHEN COORDINATES ARE PROVIDED FOR A PUBLIC LAND SURVEY CORNER AND SHALL INCLUDE ALL OF THE FOLLOWING ELEMENTS (A-D)

(A) IDENTIFY THE CORNER BY REFERENCE TO THE U.S. PUBLIC LAND SURVEY SYSTEM IN DIAGRAM AT RIGHT

● = CORNER MONUMENT



T 14 N, R 5 W

(B) COORDINATES:

GEOGRAPHIC (Degrees Minutes Seconds)

LATITUDE: 43° 41' 43.8253" N

LONGITUDE: 90° 59' 23.8467" W

ELLIPSOID HT (m): _____

DATUM: NAD 1983 (2007)

GEOID03 ADJ: -32.436

ORTHOMETRIC HT: _____

VERNON COUNTY (U.S. FEET)

Coord Quality (+/-)

NORTHING (Y): 199929.423 _____

EASTING (X): 675348.702 _____

GPS METHOD USED TO COMPUTE COORDINATES (check as applicable)

- RTK Observations Static Baselines OPUS-RS Solution OPUS-S Solution
 Combination of GPS Observations & Conventional Procedures

Was a Least Squares Adjustment Used to Compute Coordinates? Yes / No

BASE CONTROL USED FOR COORDINATE COMPUTATION

Station Name	Station Coordinates	Date/Time
<u>OPUS Station - CN07</u>	<u>43° 42' 15.5488" N 91° 01' 07.7465" W</u>	<u>03/22/2010 - 14:14</u>
	<u>N - 203162.047 E - 667724.176</u>	
<u>Same</u>		<u>03/29/2010 - 10:09</u>

(C) REASON FOR COORDINATES SUBMITTAL (check one)

- Being Filed With a New U.S. PLS Monument Record
 To Correct the Coordinates Listed on a Previously Filed PLS Monument Record
 To Provide Coordinates for Previously Filed PLS Monument Record without Coordinates
 To Provide Supplemental Coordinates for a Previously Filed PLS Monument Record

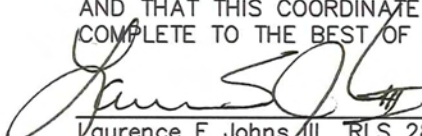
MOST RECENT PLS MONUMENT RECORD DATE:

R.L.S. WHO CREATED MOST RECENT PLS MONUMENT RECORD:

(D) AGENT(S) PERFORMING GPS OBSERVATIONS & COORDINATE COMPUTATION

- 1) LAURENCE E JOHNS III
 2) _____

I, LAURENCE E JOHNS III RLS 2804, REGISTERED LAND SURVEYOR, HEREBY CERTIFY THAT THE COORDINATES PROVIDED ON THIS RECORD WERE DETERMINED BY ME OR UNDER MY DIRECTION AND CONTROL AND THAT THIS COORDINATE SUBMISSION FORM IS CORRECT AND COMPLETE TO THE BEST OF MY KNOWLEDGE AND BELIEF.


 Laurence E Johns III RLS 2804
 Eagle Ridge Surveying, LLC
 PO Box 213
 Wilton, Wisconsin
 29 March 2010

