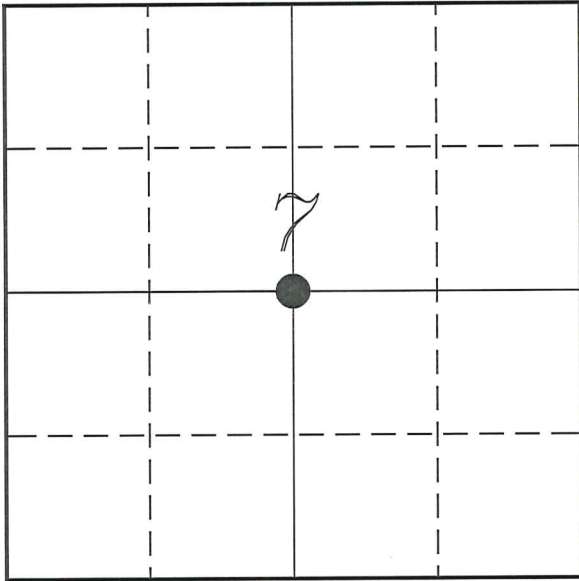


---

# U. S. PUBLIC LAND SURVEY MONUMENT RECORD

---

## SECTION 7, T14N, R5W, VILLAGE OF COON VALLEY VERNON COUNTY, WISCONSIN



*LOCATION OF LANDMARK*

<i>VERNON COUNTY COORDINATE SYSTEM</i>	
<i>Northing</i>	<i>202462.899</i>
<i>Easting</i>	<i>667422.989</i>
<i>Datum</i>	<i>NAD 1983 (2011)</i>
<i>Elevation</i>	
<i>Datum</i>	
<i>TYPE OF LANDMARK:</i>	
<i>Existing 3/4" Iron Rod</i>	
<i>BEARINGS ARE REFERENCED TO:</i>	
<i>Vernon County Coordinates (Survey Grade)</i>	

Witnesses: Laurence E Johns III

Date: 2 July 2020

---

*Describe or show any material discrepancy between the location of the restored corner and that of the corner previously restored or re-established.*

Wm Knower established this corner in August 1879. During the first of many surveys in the to be Village of Coon Valley. He shows he set a stone at this corner.

Alex Ristow was at this corner during several surveys in the Village between 1900 and 1905.

There have been many surveys and subdivisions using a corner at this location.

Clayton Connell was at this corner, in August 1978. He shows he found a Brass Cap.

Deralo E Kading prepared a tie sheet for this corner, in April 1990, during a DOT highway project. He shows that he replaced the corner with a brass plaque.

F Curtis Crook was at this corner, in May 1991. He shows he set a PK Nail based on DOT ties.

Willam Bulawa was at this corner, in November 1995. He shows he set a 3/4" iron rod based on Lampman's many surveys and other section information.

---

*Describe any record evidence, monument evidence, testimonial evidence or any other material evidence you considered and whether the monument was found or restored through acceptance of an obliterated evidence location.*

No bearing trees of record were located.

It appears that this corner has been perpetuated from at least 1978. No record of the brass cap from before 1978, but probably set during a DOT project.

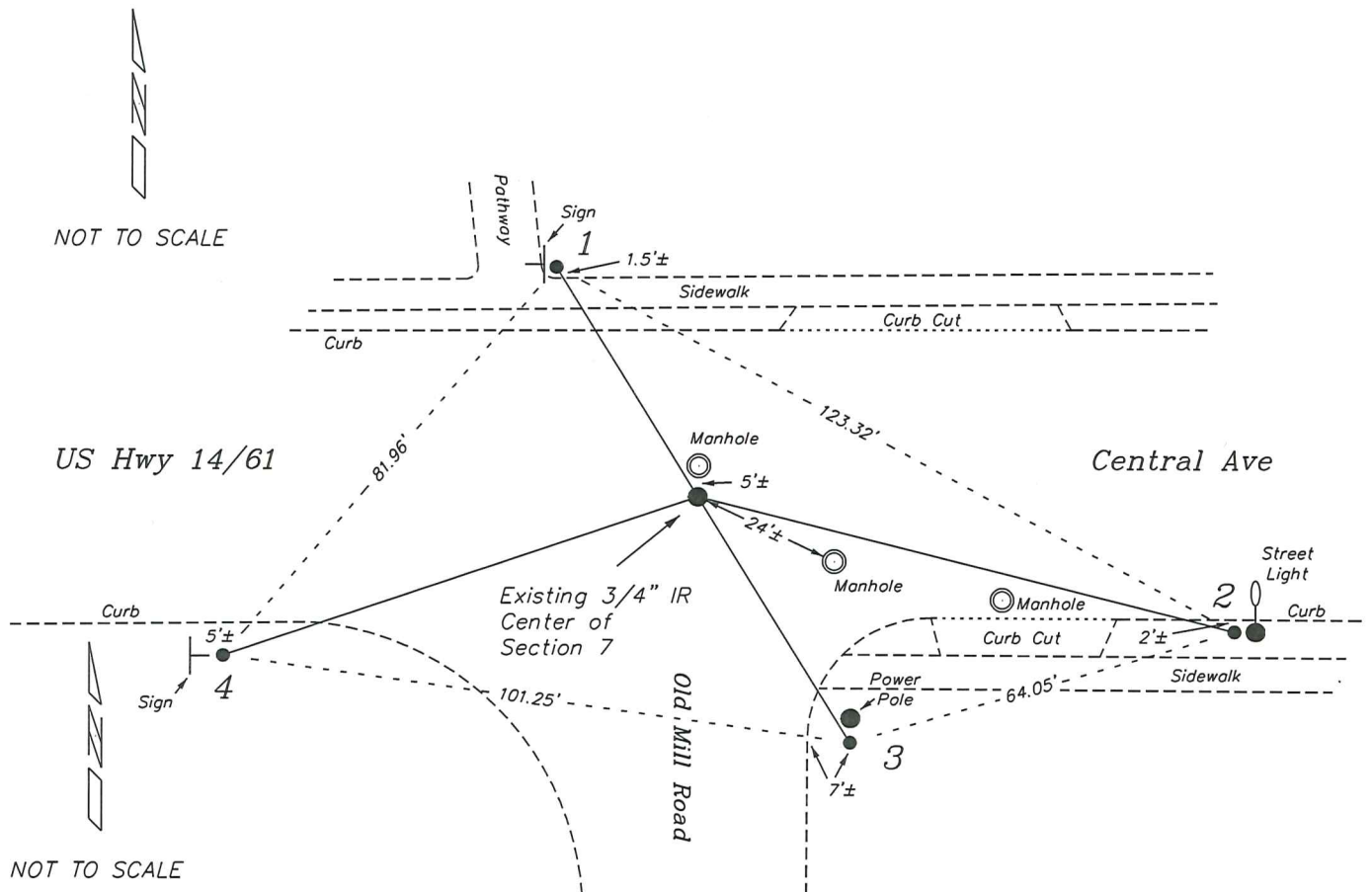
The current 3/4" iron rod has been in location since 1995.

# RECORD OF DURABLE WITNESS MONUMENTS

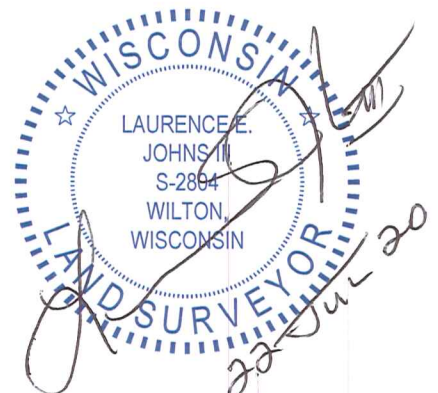
NO	DESCRIPTION	BEARING	DISTANCE
1	Set 3/4" x 18" Iron Rod 1' East of Adopt Highway Sign	N 31°34'02" W	43.28'
2	Set 3/4" x 18" Iron Rod 1' West of a Street Light	S 75°53'50" E	88.59'
3	Set 3/4" x 18" Iron Rod 2' South of Power Pole 7AA5	S 31°44'19" E	46.44'
4	Set 3/4" x 18" Iron Rod 1' East of Ped Crossing Ahead Sign	S 71°25'38" W	80.01'

## PLAN VIEW DRAWING OF REFERENCE TIES

Set Sign & Post Not Set



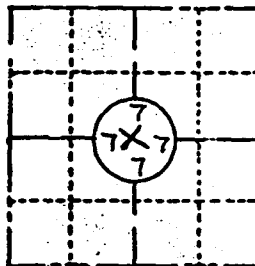
I, Laurence E Johns III PLS 2804, Professional Land Surveyor, hereby certify that the corner location shown on this record was determined by me or under my direction and control, and that this U.S. Public Land Survey Monument Record is correct and complete to the best of my knowledge and belief.



FIELD SURVEY NOTES  
**PRESERVATION OF LANDMARKS**  
(Pursuant to Section 59.635(7) Wisconsin Statutes)

State Highway Commission of Wisconsin  
Form E-D-707-65

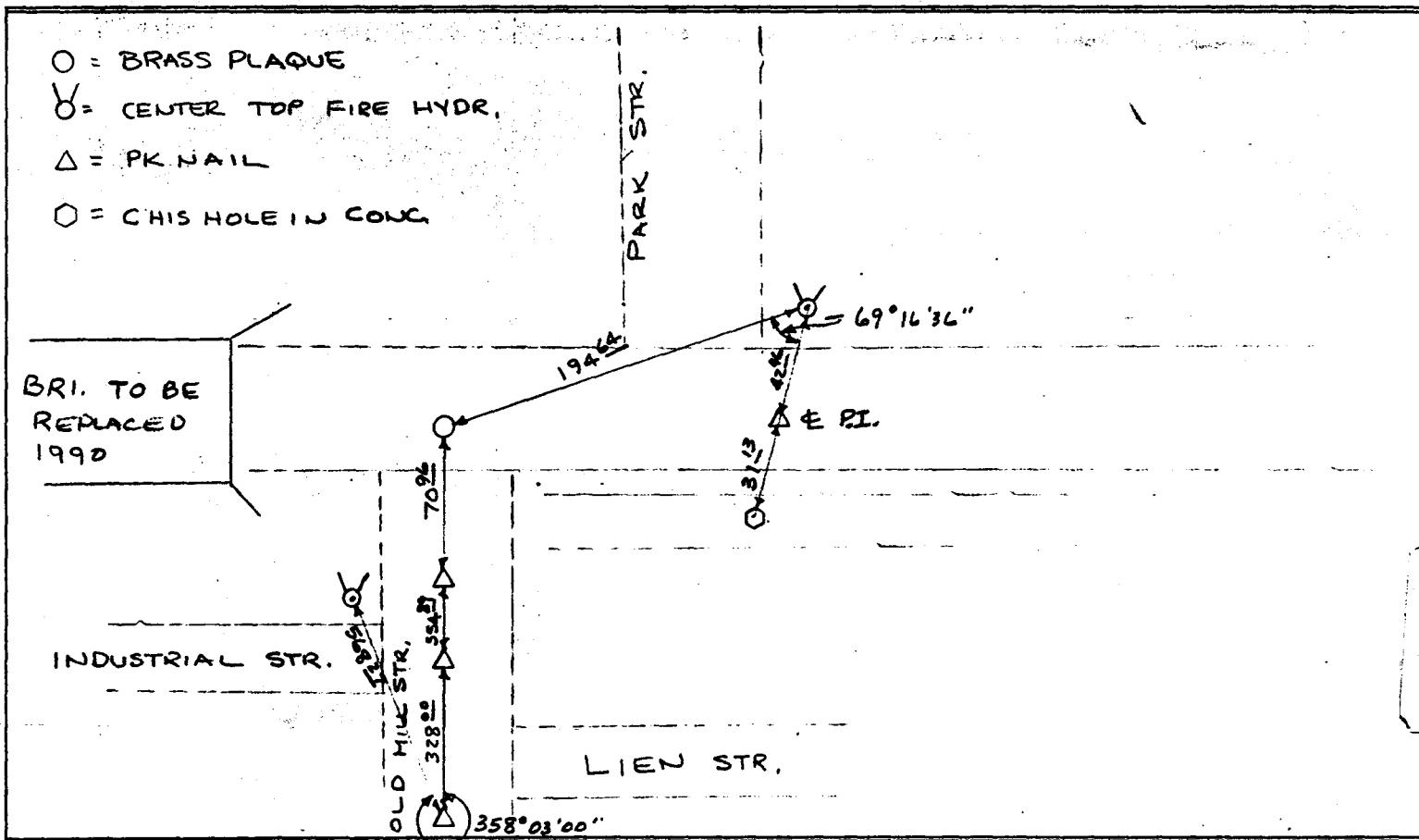
COUNTY VERNON		
TOWN COON		
HIGHWAY USH 14 & 61		
SECTION CENTER 7	TOWNSHIP 14 N	RANGE 5W
TYPE OF LANDMARK BRASS PLAQUE		



LOCATION SKETCH  
(Location of landmark indicated by "x")



This space for copy of field notes or ties to the above described landmarks



FILED UNDER PROJECT NUMBER			COUNTY CLERK'S OFFICE	
SBC DISTRICT OFFICE NUMBER 5			CITY LACROSSE	COUNTY LACROSSE
LOCATED OR ESTABLISHED BY PERPETUATED NAME DERALD E. KADINER #1064			DATE RECEIVED FOR RECORD	DATE COPY SENT TO COUNTY SURVEYOR
TITLE SURVEY COORDINATOR DATE 4-18-90			SIGNATURE OF COUNTY CLERK	