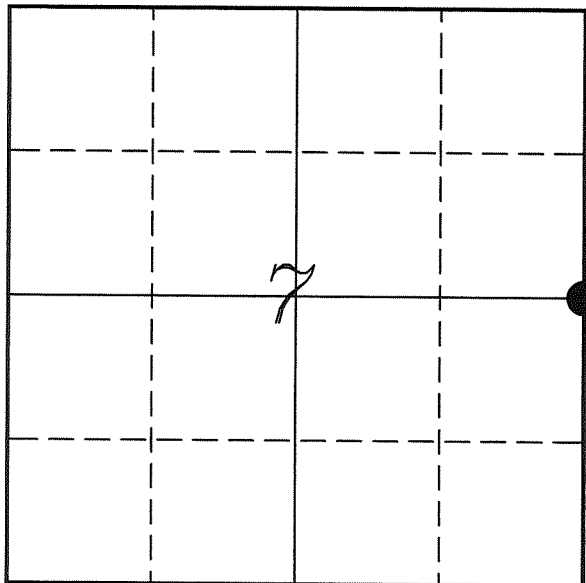


# U. S. PUBLIC LAND SURVEY MONUMENT RECORD

## SECTION 7, T14N, R5W, TOWN OF COON VERNON COUNTY, WISCONSIN



LOCATION OF LANDMARK

VERNON COUNTY COORDINATE SYSTEM	
Northing	202450.992
Easting	670070.315
Datum	NAD 1983 (2007)
Elevation	
Datum	
TYPE OF LANDMARK:	
Set 3/4" x 18" Iron Rod	
BEARINGS ARE REFERENCED TO:	
Vernon County Coordinates	

Crew: Laurence E Johns III  
Larry Handschy  
Jeremy Zellmer

Date: 18 March 2010

Describe any record evidence, monument evidence, testimonial evidence or any other material evidence you considered and whether the monument was found or restored through acceptance of an obliterated evidence location.

I could not find a PK Nail or Spike & Washer in the centerline of Central Avenue as shown on Kading's Tie Sheet.

Only ties left from his Tie Sheet is the two hydrants and they were indirectly tied to the corner. I could not make them work well enough to re-establish the corner well enough.

Re-established the corner based on information from Lampman's surveys. Used the Center of Section, SE Corner and NE Corner to pinpoint the location of the corner as he had found it.

Since the distances match Knower's distance very well and he had eyewitness testimony to the locations of the original corners. I accepted this location as the best available evidence of the original government corner.

Due to the location of the corner in the roadway and proximity to a manhole cover, I placed a 3/4" x 18" Iron Rod at this corner.

Describe or show any material discrepancy between the location of the restored corner and that of the corner previously restored or re-established.

Alfred Brown established this corner in October 1846.

Wm Knower was at this corner, in August 1879, during a survey in Section 7. He did not locate the government corner and obtained a sworn statement from the land owner on the location.

Wm Knower was at this corner again, in January 1886, during a survey in Section 6 & 7. He notes that he found the government corner.

Clayton Connel was at this corner, in December 1888, during a survey in Coon Valley. His survey shows a found Iron Pipe at this location.

Derald Kading, of the WI DOT, was at this corner, in April 1990, during a resurfacing project of Hwy 14/61. He sets a Spike & Washer at the corner and prepares a Tie Sheet.

Since that time the following surveyors were at this corner from 1992 to 2007 all finding a PK Nail or computing the corner from ties.

Robert Lampman - November 1992, December 1993 and May 1994 - Finds a PK Nail.

Willaim Bulawa - November 1995 - No mention of type of monument.

Jessica Zamor - December 1996 - Finds a PK Nail.

Curt Cummer - May 2001 & June 2002 - Computes the location from ties.

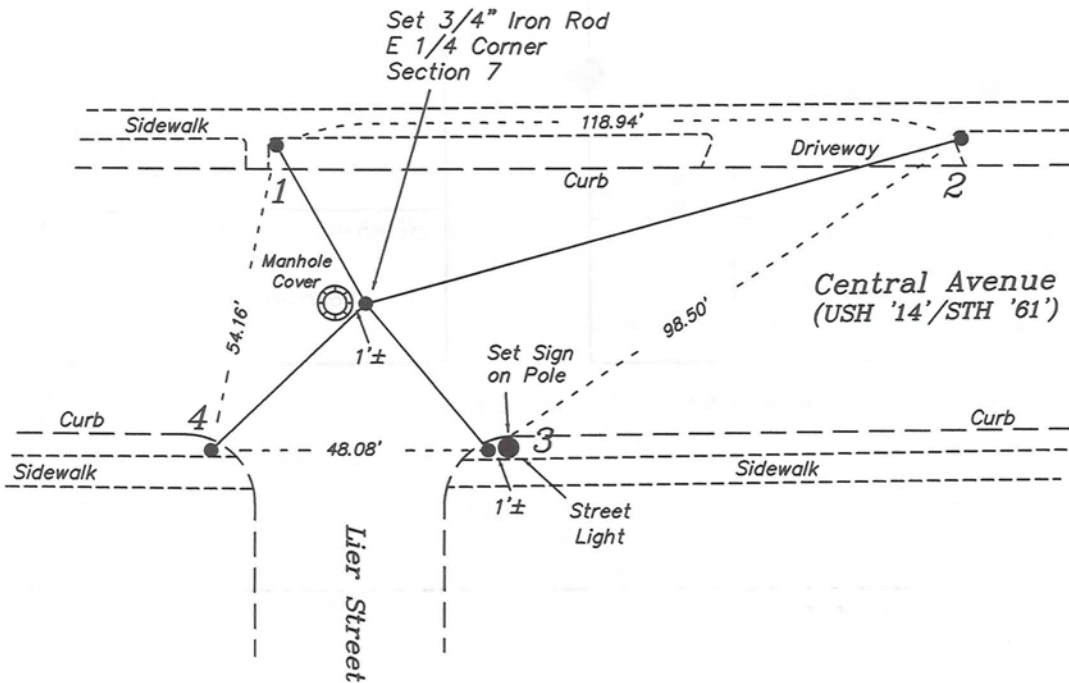
Paul Fairchild - May 2003 & May 2007 - Computes the location from ties.

Gregory Fauerbach - November 2006 - Computes the location from ties.

Scott Dunnum - March 2007 - Computes the location from ties.

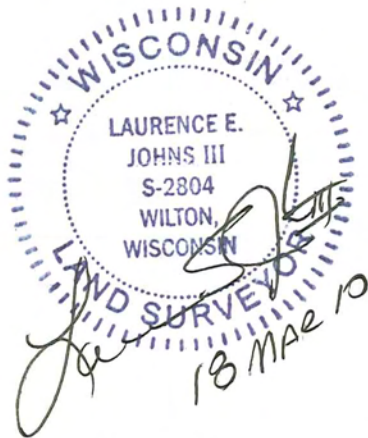
# RECORD OF DURABLE WITNESS MONUMENTS

NO	DESCRIPTION	BEARING	DISTANCE
1	Set 3/4" x 18" Iron Rod Next to Edge of Sidewalk	N 29°27'28" W	31.51'
2	Set 3/4" x 18" Iron Rod Next to Edge of Sidewalk	N 74°18'29" E	107.44'
3	Set 3/4" x 18" Iron Rod 1' West of Street Light Pole	S 40°04'25" E	33.12'
4	Set 3/4" x 18" Iron Rod Next to Edge of Sidewalk	S 46°20'16" W	36.99'



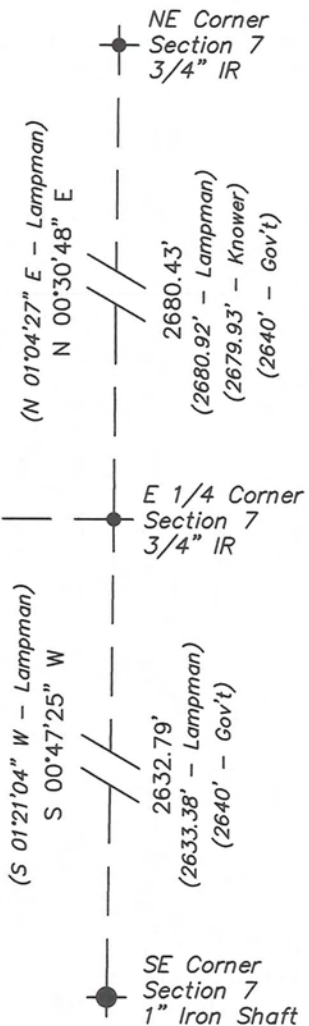
## PLAN VIEW DRAWING OF REFERENCE TIES

Map Showing Distance And Direction To Other Public Land Survey  
Corners Used For Re-Establishing The Corner



Center Section  
Section 7  
3/4" IR

(N 89°11'00" W - Lampman)  
(N 89°10'08" W - Bulawa)  
(N 89°11'41" W - Cummer)  
N 89°44'45" W  
2647.52'  
(2646.99' - Cummer)  
(2647.20' - Lampman)  
(2637.525' - Kowner)



I, Laurence E Johns III RLS 2804, Registered Land Surveyor, herby certify that the corner location shown on this record was determined by me or under my direction and control, and that this U.S. Public Land Survey Monument Record is correct and complete to the best of my knowledge and belief.

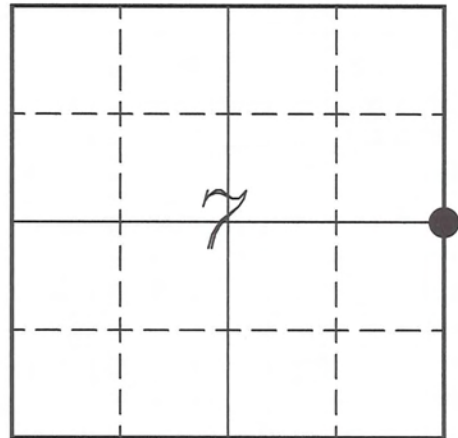
Laurence E Johns III RLS 2804  
 Eagle Ridge Surveying, LLC  
 PO Box 213  
 Wilton, Wisconsin  
 18 March 2010

**VERNON COUNTY COORDINATE SUBMISSION FORM**  
**"As An Addendum To"**  
**VERNON COUNTY**  
**CERTIFIED U.S. PUBLIC LAND SURVEY MONUMENT RECORD**

INSTRUCTIONS: THIS RECORD FORM SHOULD BE USED WHEN COORDINATES ARE PROVIDED FOR A PUBLIC LAND SURVEY CORNER AND SHALL INCLUDE ALL OF THE FOLLOWING ELEMENTS (A-D)

(A) IDENTIFY THE CORNER BY REFERENCE TO THE U.S. PUBLIC LAND SURVEY SYSTEM IN DIAGRAM AT RIGHT

● = CORNER MONUMENT



*T 14 N, R 5 W*

(B) COORDINATES:

GEOGRAPHIC (Degrees Minutes Seconds)

LATITUDE: 43° 42' 08.5912" N

LONGITUDE: 91° 00' 35.7829" W

ELLIPSOID HT (m): \_\_\_\_\_

DATUM: NAD 1983 (2007)

GEOID03 ADJ: -32.365

ORTHOMETRIC HT: \_\_\_\_\_

VERNON COUNTY (U.S. FEET)

Coord Quality (+/-)

NORTHING (Y): 202450.992 \_\_\_\_\_

EASTING (X): 670070.315 \_\_\_\_\_

GPS METHOD USED TO COMPUTE COORDINATES (check as applicable)

- RTK Observations     Static Baselines     OPUS-RS Solution     OPUS-S Solution  
 Combination of GPS Observations & Conventional Procedures

Was a Least Squares Adjustment Used to Compute Coordinates? Yes /  No

BASE CONTROL USED FOR COORDINATE COMPUTATION

Station Name	Station Coordinates	Date/Time
<u>OPUS Station - CN07</u>	<u>43° 42' 15.5488" N 91° 01' 07.7465" W</u>	<u>03/18/2010 - 15:22</u>
	<u>N - 203162.047 E - 667724.176</u>	
<u>OPUS Station - CN07</u>	_____	<u>03/22/2010 - 15:14</u>

(C) REASON FOR COORDINATES SUBMITTAL (check one)

- Being Filed With a New U.S. PLS Monument Record  
 To Correct the Coordinates Listed on a Previously Filed PLS Monument Record  
 To Provide Coordinates for Previously Filed PLS Monument Record without Coordinates  
 To Provide Supplemental Coordinates for a Previously Filed PLS Monument Record

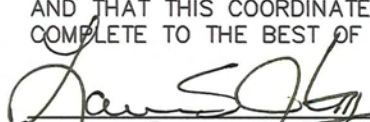
MOST RECENT PLS MONUMENT RECORD DATE:

R.L.S. WHO CREATED MOST RECENT PLS MONUMENT RECORD:

(D) AGENT(S) PERFORMING GPS OBSERVATIONS & COORDINATE COMPUTATION

- 1) LAURENCE E JOHNS III  
 2) \_\_\_\_\_

I, LAURENCE E JOHNS III RLS 2804, REGISTERED LAND SURVEYOR, HEREBY CERTIFY THAT THE COORDINATES PROVIDED ON THIS RECORD WERE DETERMINED BY ME OR UNDER MY DIRECTION AND CONTROL AND THAT THIS COORDINATE SUBMISSION FORM IS CORRECT AND COMPLETE TO THE BEST OF MY KNOWLEDGE AND BELIEF.

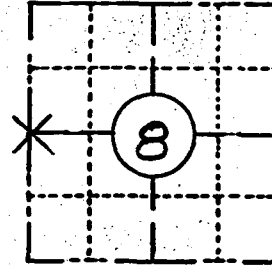
  
 Laurence E Johns III, RLS 2804  
 Eagle Ridge Surveying, LLC  
 PO Box 213  
 Wilton, Wisconsin  
 22 March 2010



FIELD SURVEY NOTES  
**PRESERVATION OF LANDMARKS**  
(Pursuant to Section 59.635(7) Wisconsin Statutes)

State Highway Commission of Wisconsin  
Form E-D-707-65

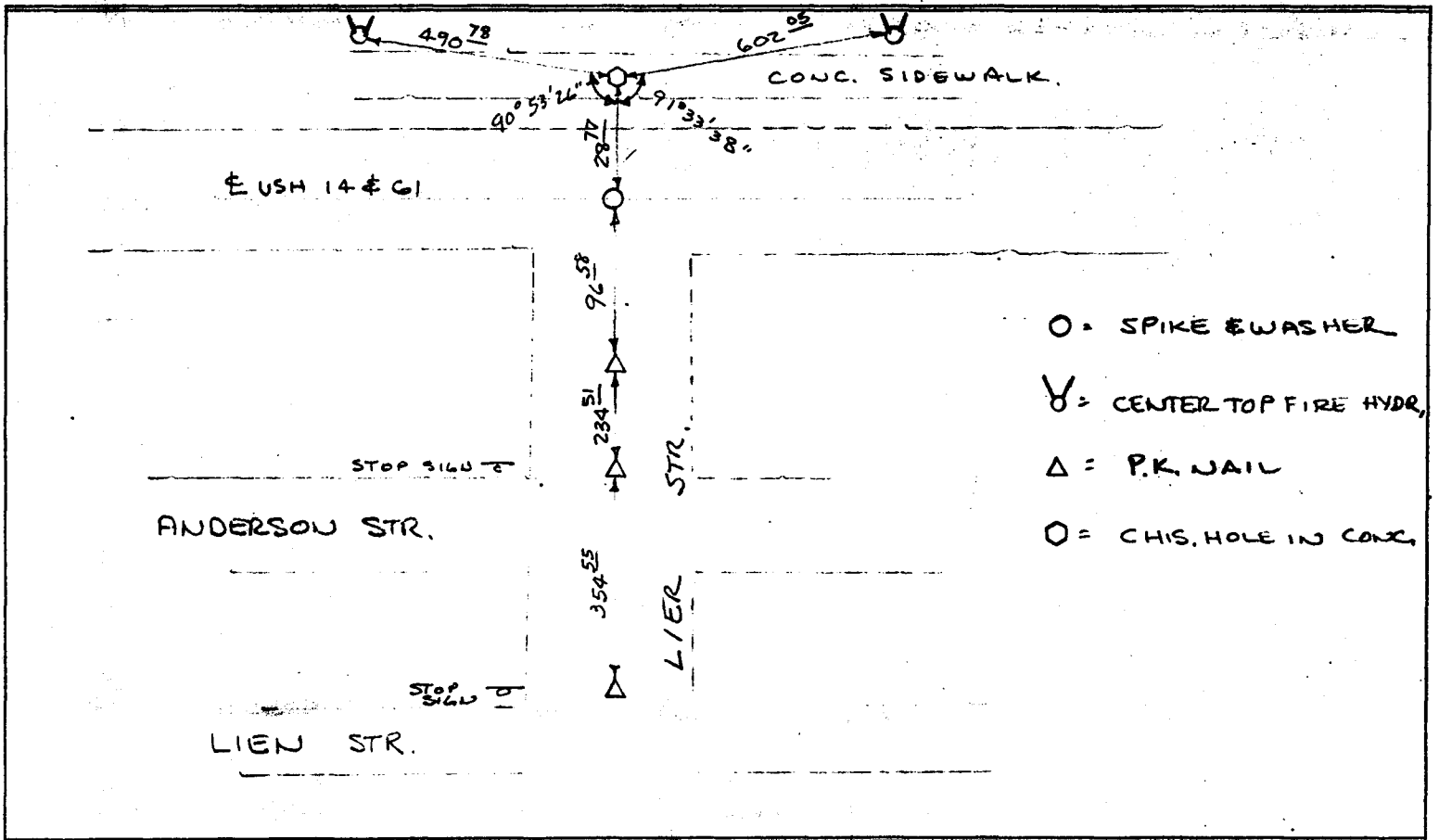
COUNTY VERNON		
TOWN COON		
HIGHWAY USH 14 & 61		
SECTION 7	TOWNSHIP 14 N	RANGE 5 W
TYPE OF LANDMARK SPIKE & WASHER		



LOCATION SKETCH  
(Location of landmark indicated by "x")



This space for copy of field notes or ties to the above described landmarks



FILED UNDER PROJECT NUMBER			COUNTY CLERK'S OFFICE	
SHC DISTRICT OFFICE NUMBER 5			COUNTY OF LACROSSE	WISCONSIN } SS
CITY LACROSSE	COUNTY LACROSSE	DATE RECEIVED FOR RECORD	DATE COPY SENT TO COUNTY SURVEYOR	
LOCATED OR ESTABLISHED BY PERPETUATED			SIGNATURE OF COUNTY CLERK	
NAME DERALD E KADING #1064				
TITLE SURVEY COORDINATOR DATE 4-18-90				