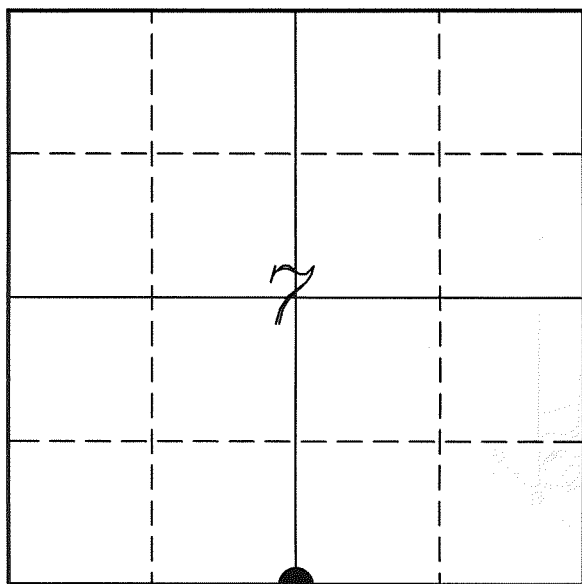


U. S. PUBLIC LAND SURVEY MONUMENT RECORD

SECTION 7, T14N, R5W, TOWN OF COON VERNON COUNTY, WISCONSIN



LOCATION OF LANDMARK

Crew: Laurence E Johns III
Larry Handschy
Jeremy Zellmer

Date: 18 March 2010

VERNON COUNTY COORDINATE SYSTEM	
Northing	199825.613
Easting	667396.675
Datum	NAD 1983 (2007)
Elevation	
Datum	
TYPE OF LANDMARK:	
Found Stone Monument	
BEARINGS ARE REFERENCED TO:	
Vernon County Coordinates	

Describe any record evidence, monument evidence, testimonial evidence or any other material evidence you considered and whether the monument was found or restored through acceptance of an obliterated evidence location.

Found the stone monument set by Knower and found by Lampman.

Knower mentions that the actual corner is a post and witnessed by a stone monument. He does not indicate distance or direction.

Since distances to the East and West match very well with Knower's distance, can only assume that the stone was next to the post.

Lampman uses the stone as the corner in several surveys as did Bulawa in his.

There is no evidence of the mound and pit put in by the original government survey.

Since it is probable that the stone was next to the original post and this stone was used in previous surveys. I accepted the stone as the best available evidence at this time for the original government corner.

Describe or show any material discrepancy between the location of the restored corner and that of the corner previously restored or re-established.

Alfred Brown established this corner in October 1846.

Wm Knower was here, in August 1879, during a survey in Section 7. He obtains a sworn statement by a land owner stating that post at this corner represents the quarter post. Then he also mentions that this corner is witnessed by a stone with an 'x'.

Wm Knower was here again, in October 1887, during a survey in Section 6. He notes that he finds the government corner.

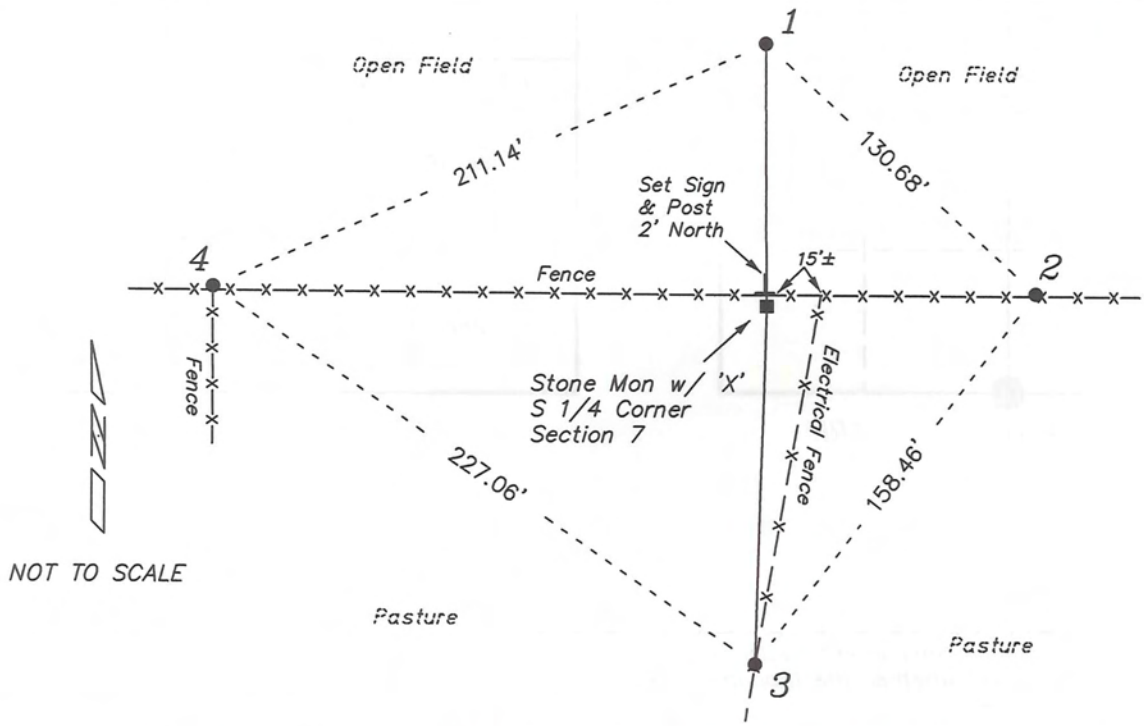
Joseph Murphy was at this corner, in February 1980, during a survey in Section 18. He does not mention a monument being found or set.

Robert Lampman was at this corner, in September 1992, during a survey in Section 7. He finds the stone monument and prepares a tie sheet for it.

William Bulawa was at this corner, in November 1995, during a survey in Coon Valley. He finds and uses the stone monument.

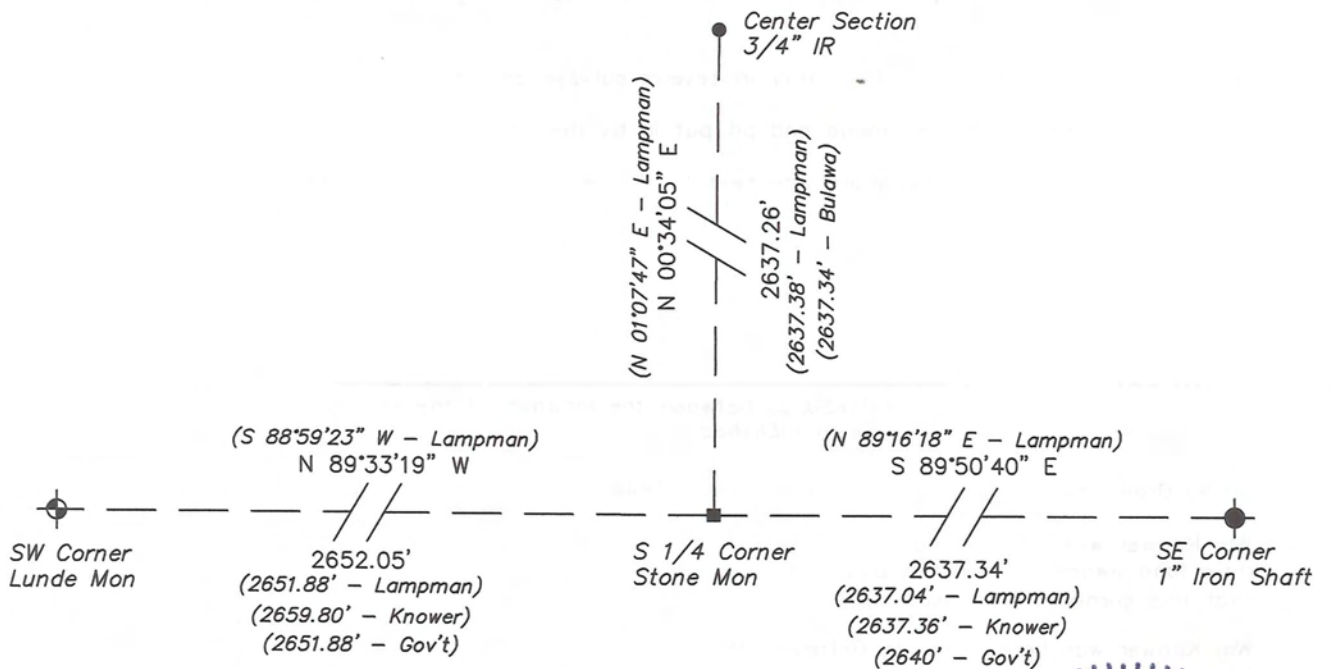
RECORD OF DURABLE WITNESS MONUMENTS

NO	DESCRIPTION	BEARING	DISTANCE
1	Set 3/4" x 18" Iron Rod	N 00°17'43" W	91.39'
2	Set 3/4" x 18" Iron Rod In Fence Line	N 89°36'02" E	93.57'
3	Set 3/4" x 18" Iron Rod Next to Pasture Electrical Fence	S 01°43'37" W	124.46'
4	Set 3/4" x 18" Iron Rod In Fence Line	N 89°14'18" W	192.02'

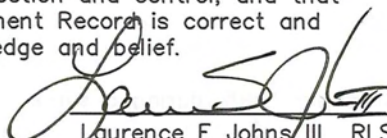


PLAN VIEW DRAWING OF REFERENCE TIES

Map Showing Distance And Direction To Other Public Land Survey Corners Used For Re-Establishing The Corner



I, Laurence E Johns III RLS 2804, Registered Land Surveyor, hereby certify that the corner location shown on this record was determined by me or under my direction and control, and that this U.S. Public Land Survey Monument Record is correct and complete to the best of my knowledge and belief.


 Laurence E Johns III RLS 2804
 Eagle Ridge Surveying, LLC
 PO Box 213
 Wilton, Wisconsin
 18 March 2010

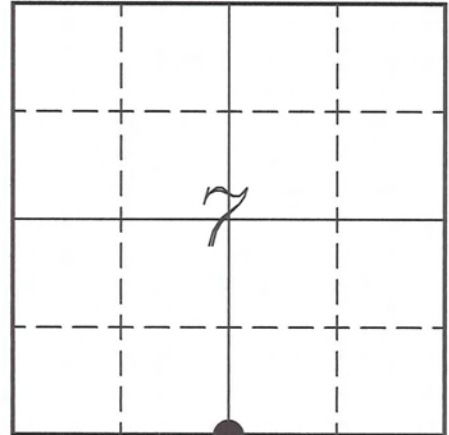

 WISCONSIN
 LAURENCE E.
 JOHNS III
 S-2804
 WILTON,
 WISCONSIN
 LAND SURVEYOR
 18 MAR 10

VERNON COUNTY COORDINATE SUBMISSION FORM
 "As An Addendum To"
VERNON COUNTY
CERTIFIED U.S. PUBLIC LAND SURVEY MONUMENT RECORD

INSTRUCTIONS: THIS RECORD FORM SHOULD BE USED WHEN COORDINATES ARE PROVIDED FOR A PUBLIC LAND SURVEY CORNER AND SHALL INCLUDE ALL OF THE FOLLOWING ELEMENTS (A-D)

(A) IDENTIFY THE CORNER BY REFERENCE TO THE U.S. PUBLIC LAND SURVEY SYSTEM IN DIAGRAM AT RIGHT

● = CORNER MONUMENT



T 14 N, R 5 W

(B) COORDINATES:

GEOGRAPHIC (Degrees Minutes Seconds)

LATITUDE: 43° 41' 42.5907" N

LONGITUDE: 91° 01' 12.0754" W

ELLIPSOID HT (m): _____

DATUM: NAD 1983 (2007)

GEOID03 ADJ: -32.325

ORTHOMETRIC HT: _____

VERNON COUNTY (U.S. FEET)

Coord Quality (+/-)

NORTHING (Y): 199825.613 _____

EASTING (X): 667396.675 _____

GPS METHOD USED TO COMPUTE COORDINATES (check as applicable)

- RTK Observations Static Baselines OPUS-RS Solution OPUS-S Solution
 Combination of GPS Observations & Conventional Procedures

Was a Least Squares Adjustment Used to Compute Coordinates? Yes / No

BASE CONTROL USED FOR COORDINATE COMPUTATION

Station Name	Station Coordinates	Date/Time
<u>OPUS Station - CN07</u>	<u>43° 42' 15.5488" N 91° 01' 07.7465" W</u>	<u>03/18/2010 - 10:16</u>
	<u>N - 203162.047 E - 667724.176</u>	
<u>Same</u>		<u>03/22/2010 - 11:51</u>

(C) REASON FOR COORDINATES SUBMITTAL (check one)

- Being Filed With a New U.S. PLS Monument Record
 To Correct the Coordinates Listed on a Previously Filed PLS Monument Record
 To Provide Coordinates for Previously Filed PLS Monument Record without Coordinates
 To Provide Supplemental Coordinates for a Previously Filed PLS Monument Record

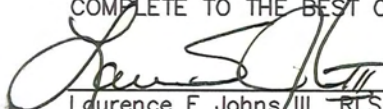
MOST RECENT PLS MONUMENT RECORD DATE:

R.L.S. WHO CREATED MOST RECENT PLS MONUMENT RECORD:

(D) AGENT(S) PERFORMING GPS OBSERVATIONS & COORDINATE COMPUTATION

- 1) LAURENCE E JOHNS III
 2) _____

I, LAURENCE E JOHNS III RLS 2804, REGISTERED LAND SURVEYOR, HEREBY CERTIFY THAT THE COORDINATES PROVIDED ON THIS RECORD WERE DETERMINED BY ME OR UNDER MY DIRECTION AND CONTROL AND THAT THIS COORDINATE SUBMISSION FORM IS CORRECT AND COMPLETE TO THE BEST OF MY KNOWLEDGE AND BELIEF.


 Laurence E Johns III RLS 2804
 Eagle Ridge Surveying, LLC
 PO Box 213
 Wilton, Wisconsin
 18 March 2010



CERTIFIED LAND CORNER

STATE OF WISCONSIN)
 COUNTY OF VERNON) S.S.

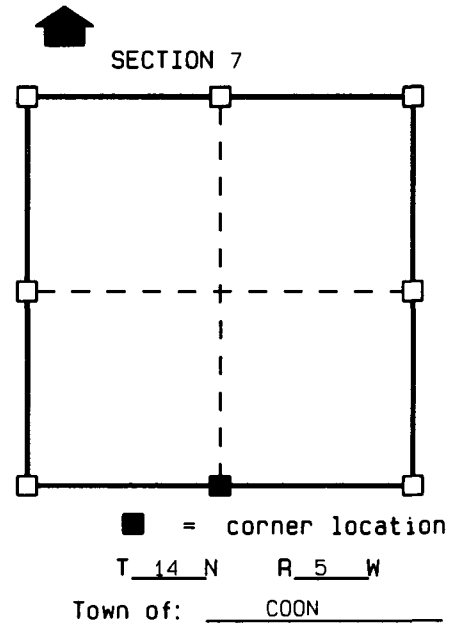
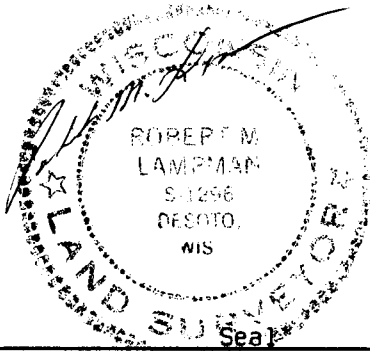
CERTIFICATE

I, ROBERT M. LAMPMAN, do hereby certify that on the 8th day of SEPTEMBER 1992, I found (evidence) ~~(no evidence)~~ of the S 1/4 corner of SECTION 7, T 14 N, R 5 W, Fourth Principal Meridian, and I re-established said corner according to the Wisconsin Statutes as shown and described hereon.

Dated this 23rd day of SEPTEMBER 1992

ROBERT M. LAMPMAN R.L.S. S-1296

Title



History of original corner establishment:

ORIGINAL CORNER ESTABLISHED BY BROWN IN 1846.

Description of corner evidence found:

FOUND STONE WITH CROSS AT THE CORNER.

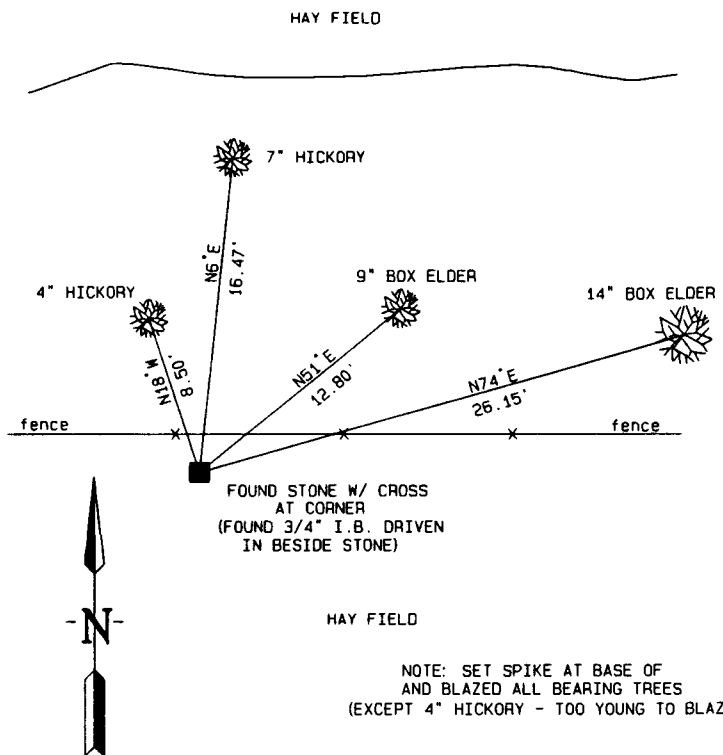
Description of corner and witness monuments, references and accessories used to perpetuate the original or re-established location of this corner:

Witnesses to corner location:

BRADY V. HARDING

JESSICA A. ZAMOR

Sketch:



SURVEY CONTROL ORDER

Horizontal
Vertical

WISCONSIN COORDINATE SYSTEM

Corner	East (X)	North (Y)	Elevation (Z)	Zone
Control Sta. Name				

SECTION 7 TOWN 14 NORTH, RANGE 5 WEST

