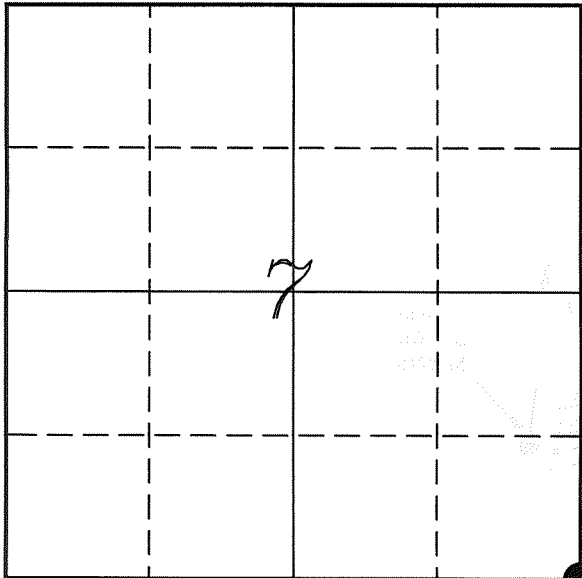


---

# U. S. PUBLIC LAND SURVEY MONUMENT RECORD

---

## SECTION 7, T14N, R5W, TOWN OF COON VERNON COUNTY, WISCONSIN



LOCATION OF LANDMARK

Crew: Laurence E Johns III  
Larry Handschy  
Jeremy Zellmer

Date: 18 March 2010

VERNON COUNTY COORDINATE SYSTEM	
Northing	199818.451
Easting	670034.001
Datum	NAD 1983 (2007)
Elevation	
Datum	
TYPE OF LANDMARK:	
Found 1" Iron Shaft	
BEARINGS ARE REFERENCED TO:	
Vernon County Coordinates	

---

*Describe any record evidence, monument evidence, testimonial evidence or any other material evidence you considered and whether the monument was found or restored through acceptance of an obliterated evidence location.*

I find, what appears, to be a 1" Shaft at the location called for on Lampman's tie sheet. Even though Lampman calls for a 1" Iron Pipe, I believe it is the same corner.

Distances North, West and South seem to fit government notes real well. And matches Knower distance to West and is close to his distance to the South.

Since no bearing trees from the original government or Knower's survey could be located and since Lampman used this corner in his survey. I accepted the 1" Iron Shaft as the best available evidence of the original government corner.

The Iron Shaft is surrounded by a small mound of stones. Since the monument is well protected and, mostly likely, more durable than a Lunde Monument. I did not replace the Iron Shaft.

---

*Describe or show any material discrepancy between the location of the restored corner and that of the corner previously restored or re-established.*

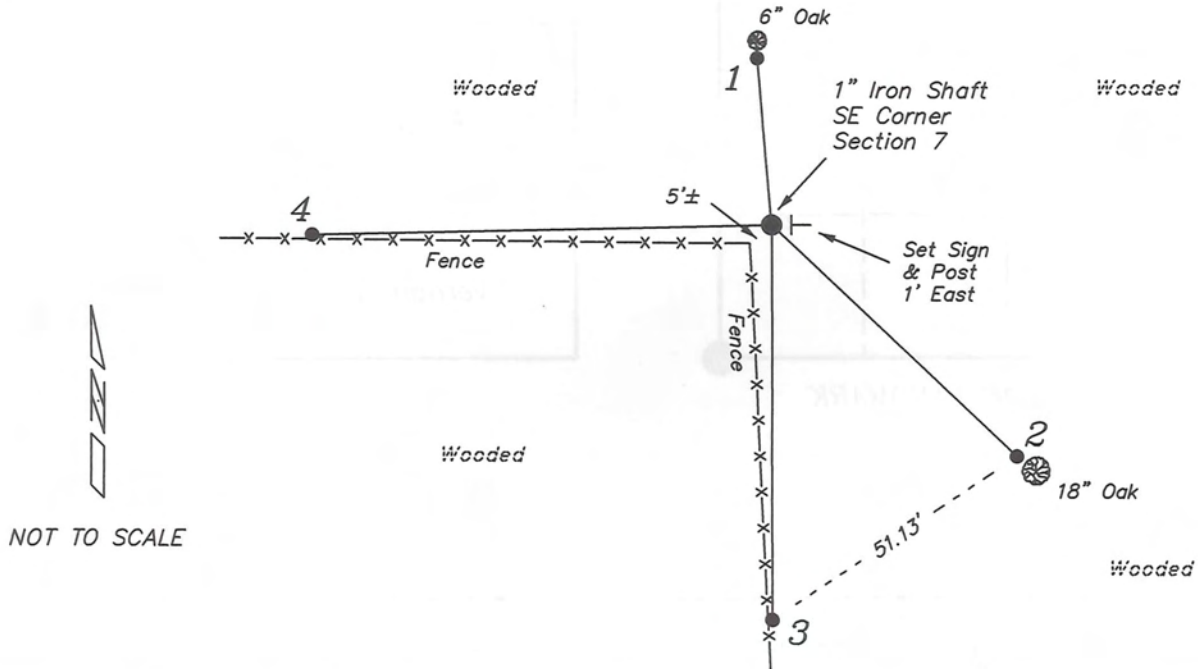
Alfred Brown established this corner in October 1846.

Wm Knower was at this corner, in October 1887, during a survey of Section 18. He found the government corner and renewed the ties.

Robert Lampman was at this corner, here September 1992, during a survey of Section 7. He states he finds a 1" Iron Pipe and prepares a tie sheet for this corner.

# RECORD OF DURABLE WITNESS MONUMENTS

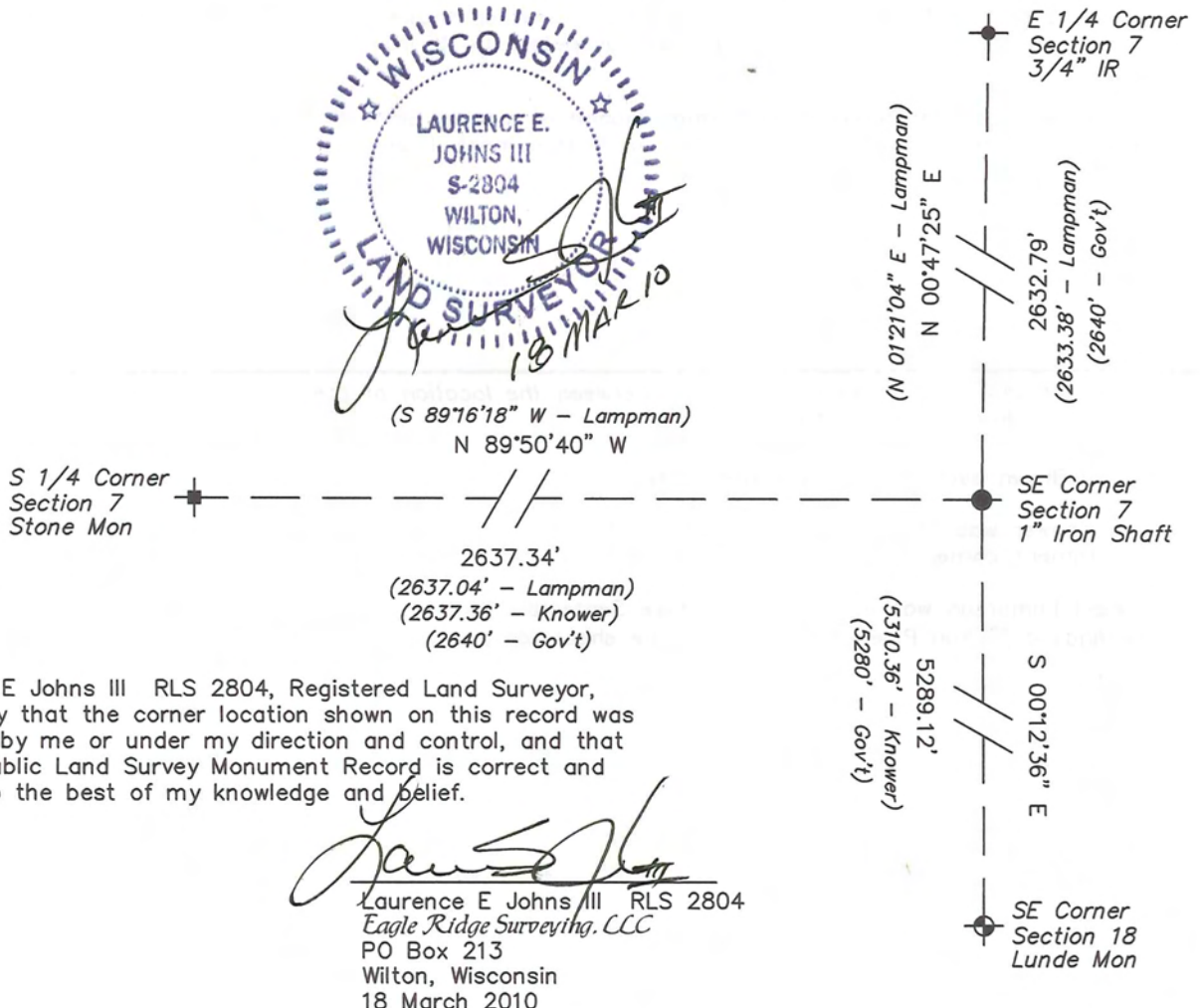
NO	DESCRIPTION	BEARING	DISTANCE
1	Set 3/4" x 18" Iron Rod South Side of 6" Oak	N 05°03'59" W	29.12'
2	Set 3/4" x 18" Iron Rod Northwest Side of 18" Oak	S 46°41'58" E	58.68'
3	Set 3/4" x 18" Iron Rod In Fence Line	S 00°12'18" E	68.73'
4	Set 3/4" x 18" Iron Rod In Fence Line	S 88°36'24" W	79.68'



NOT TO SCALE

## PLAN VIEW DRAWING OF REFERENCE TIES

Map Showing Distance And Direction To Other Public Land Survey  
Corners Used For Re-Establishing The Corner



I, Laurence E Johns III RLS 2804, Registered Land Surveyor, hereby certify that the corner location shown on this record was determined by me or under my direction and control, and that this U.S. Public Land Survey Monument Record is correct and complete to the best of my knowledge and belief.

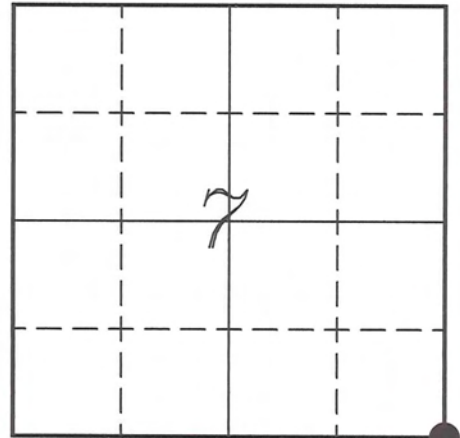
Laurence E Johns III RLS 2804  
 Eagle Ridge Surveying, LLC  
 PO Box 213  
 Wilton, Wisconsin  
 18 March 2010

**VERNON COUNTY COORDINATE SUBMISSION FORM**  
 "As An Addendum To"  
**VERNON COUNTY**  
**CERTIFIED U.S. PUBLIC LAND SURVEY MONUMENT RECORD**

INSTRUCTIONS: THIS RECORD FORM SHOULD BE USED WHEN COORDINATES ARE PROVIDED FOR A PUBLIC LAND SURVEY CORNER AND SHALL INCLUDE ALL OF THE FOLLOWING ELEMENTS (A-D)

(A) IDENTIFY THE CORNER BY REFERENCE TO THE U.S. PUBLIC LAND SURVEY SYSTEM IN DIAGRAM AT RIGHT

● = CORNER MONUMENT



T 14 N, R 5 W

(B) COORDINATES:

GEOGRAPHIC (Degrees Minutes Seconds)

LATITUDE: 43° 41' 42.5922" N

LONGITUDE: 91° 00' 36.1785" W

ELLIPSOID HT (m): \_\_\_\_\_

DATUM: NAD 1983 (2007)

GEOID03 ADJ: -32.362

ORTHOMETRIC HT: \_\_\_\_\_

VERNON COUNTY (U.S. FEET)

Coord Quality (+/-)

NORTHING (Y): 199818.451 \_\_\_\_\_

EASTING (X): 670034.001 \_\_\_\_\_

GPS METHOD USED TO COMPUTE COORDINATES (check as applicable)

- RTK Observations     Static Baselines     OPUS-RS Solution     OPUS-S Solution  
 Combination of GPS Observations & Conventional Procedures

Was a Least Squares Adjustment Used to Compute Coordinates? Yes /  No

BASE CONTROL USED FOR COORDINATE COMPUTATION

Station Name	Station Coordinates	Date/Time
<u>OPUS Station - CN07</u>	<u>43° 42' 15.5488" N 91° 01' 07.7465" W</u>	<u>03/15/2010 - 13:18</u>
	<u>N - 203162.047 E - 667724.176</u>	
<u>Same</u>		<u>03/18/2010 - 13:21</u>

(C) REASON FOR COORDINATES SUBMITTAL (check one)

- Being Filed With a New U.S. PLS Monument Record  
 To Correct the Coordinates Listed on a Previously Filed PLS Monument Record  
 To Provide Coordinates for Previously Filed PLS Monument Record without Coordinates  
 To Provide Supplemental Coordinates for a Previously Filed PLS Monument Record

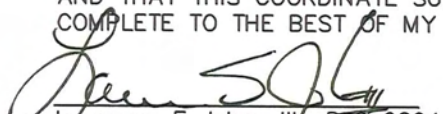
MOST RECENT PLS MONUMENT RECORD DATE:

R.L.S. WHO CREATED MOST RECENT PLS MONUMENT RECORD:

(D) AGENT(S) PERFORMING GPS OBSERVATIONS & COORDINATE COMPUTATION

- 1) LAURENCE E JOHNS III  
 2) \_\_\_\_\_

I, LAURENCE E JOHNS III RLS 2804, REGISTERED LAND SURVEYOR, HEREBY CERTIFY THAT THE COORDINATES PROVIDED ON THIS RECORD WERE DETERMINED BY ME OR UNDER MY DIRECTION AND CONTROL AND THAT THIS COORDINATE SUBMISSION FORM IS CORRECT AND COMPLETE TO THE BEST OF MY KNOWLEDGE AND BELIEF.

  
 Laurence E Johns III RLS 2804  
 Eagle Ridge Surveying, LLC  
 PO Box 213  
 Wilton, Wisconsin  
 18 March 2010



CERTIFIED LAND CORNER

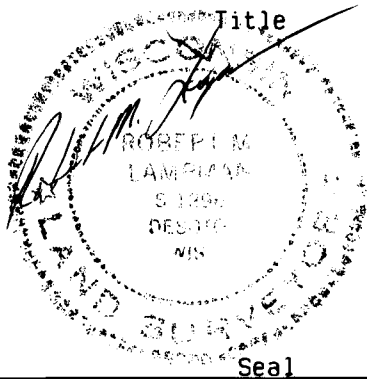
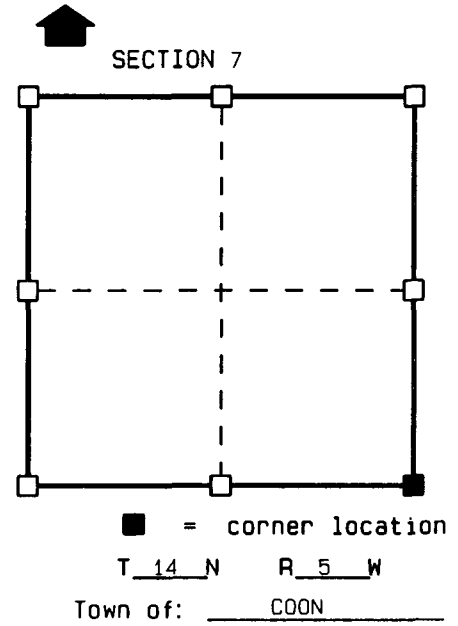
STATE OF WISCONSIN )  
 COUNTY OF VERNON ) S.S.

CERTIFICATE

I, ROBERT M. LAMPMAN, do hereby certify that on the 8th day of SEPTEMBER 1992, I found (evidence) (~~no evidence~~) of the SE corner of SECTION 7, T14 N, R5 W, Fourth Principal Meridian, and I re-established said corner according to the Wisconsin Statutes as shown and described hereon.

Dated this 23rd day of SEPTEMBER 1992

ROBERT M. LAMPMAN R.L.S. S-1296



Seal

History of original corner establishment:

ORIGINAL CORNER ESTABLISHED BY BROWN IN 1846.

Description of corner evidence found:

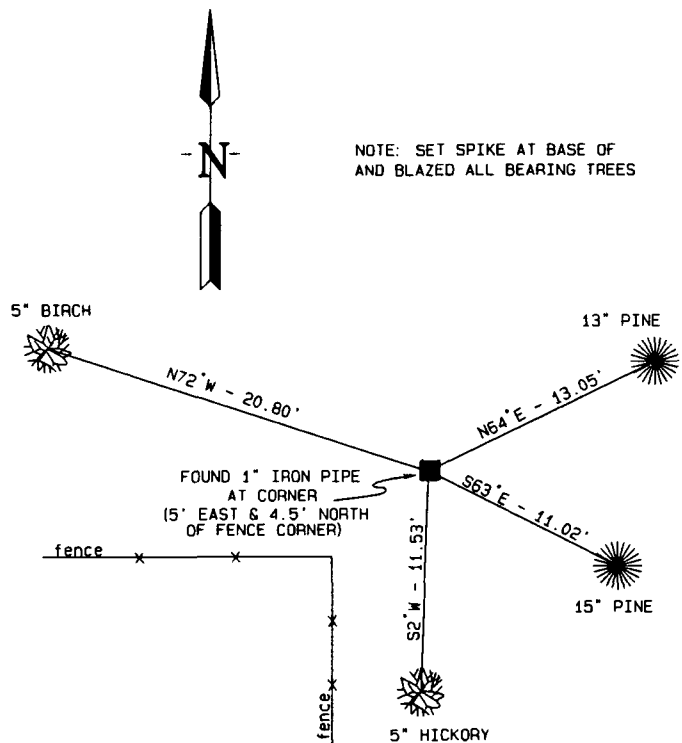
FOUND 1" IRON PIPE AT THE CORNER.

Description of corner and witness monuments, references and accessories used to perpetuate the original or re-established location of this corner:

Witnesses to corner location:

BRADY V. HARDING  
JESSICA A. ZAMOR  
 \_\_\_\_\_  
 \_\_\_\_\_  
 \_\_\_\_\_

Sketch:



SURVEY CONTROL ORDER

Horizontal
Vertical

WISCONSIN COORDINATE SYSTEM

Corner	East (X)	North (Y)	Elevation (Z)	Zone
Control Sta. Name				

# SECTION 7 TOWN 14 NORTH, RANGE 5 WEST

