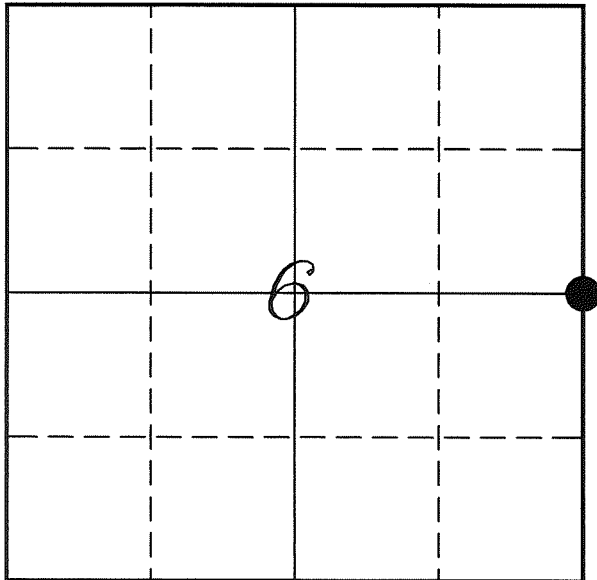

U. S. PUBLIC LAND SURVEY MONUMENT RECORD

SECTION 6, T14N, R5W, TOWN OF COON VERNON COUNTY, WISCONSIN



LOCATION OF LANDMARK

Crew: Laurence E Johns III
Larry Handschy

Date: 22 March 2010

VERNON COUNTY COORDINATE SYSTEM	
Northing	207770.045
Easting	670003.640
Datum	NAD 1983 (2007)
Elevation	
Datum	
TYPE OF LANDMARK:	
Set Lunde Monument	
BEARINGS ARE REFERENCED TO:	
Vernon County Coordinates	

Describe any record evidence, monument evidence, testimonial evidence or any other material evidence you considered and whether the monument was found or restored through acceptance of an obliterated evidence location.

There is no good occupation at this corner.

Most fence lines have been removed due to logging in the area. Just some pieces left in trees not worth cutting. Most of those dont seem to indicate a good corner location.

Distances North and South fit very well with Original Notes and with Knower's Notes also found that the straight line pro-rated location fit well enough with any existing fence pieces.

I accepted this location as the best available evidence of the original corner and set a Lunde Monument.

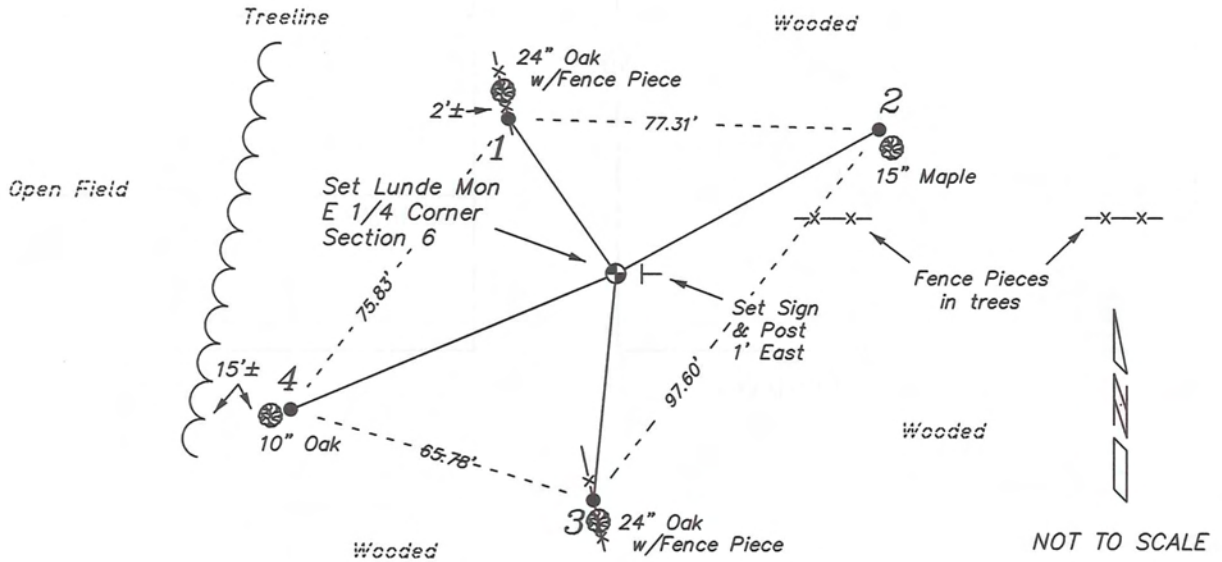
Describe or show any material discrepancy between the location of the restored corner and that of the corner previously restored or re-established.

Alfred Brown established this corner in October 1846.

Wm Knower was at this corner, in June 1887, during a survey in Section 5 & 8. He found the government corner.

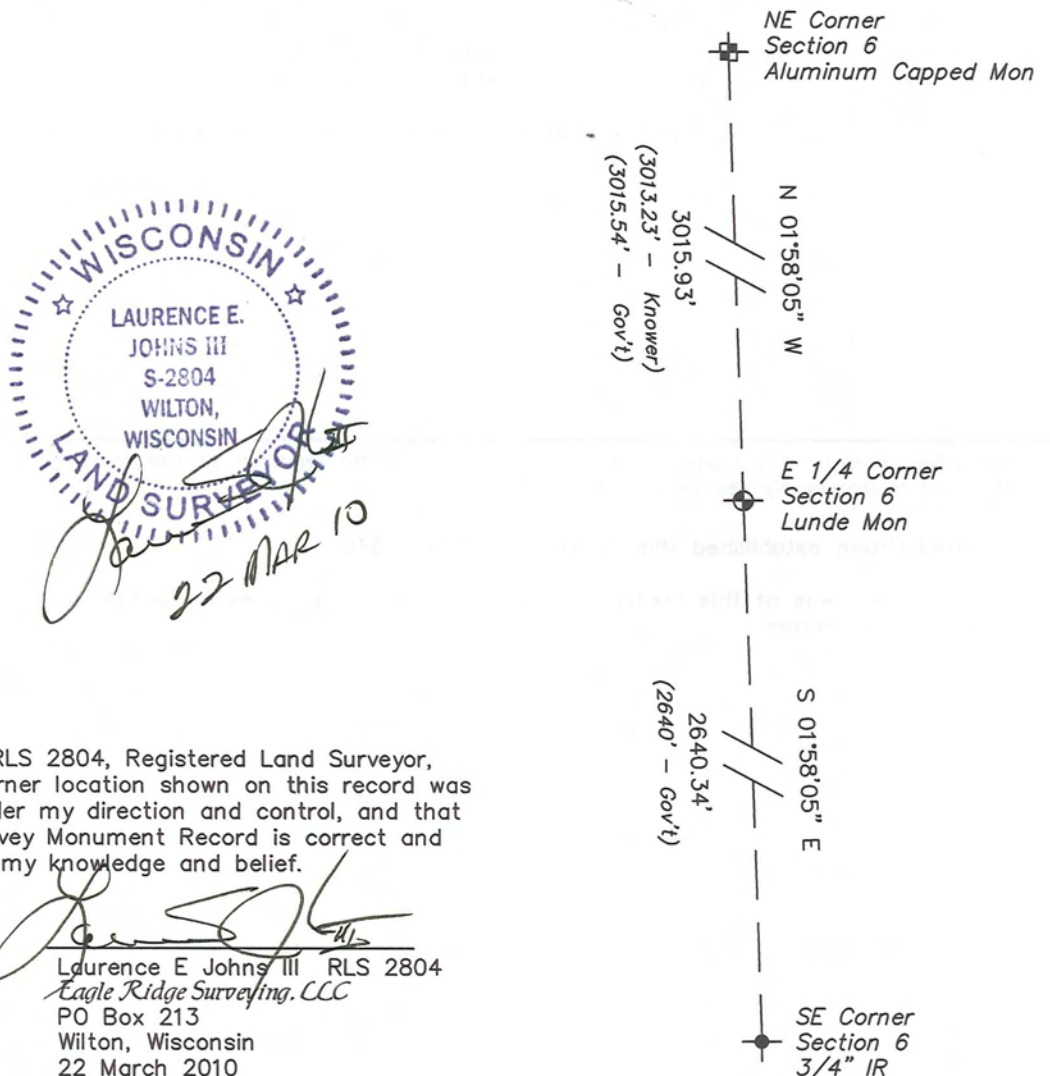
RECORD OF DURABLE WITNESS MONUMENTS

NO	DESCRIPTION	BEARING	DISTANCE
1	Set 3/4" x 18" Iron Rod 2' South of a 24" White Oak	N 34°49'39" W	39.30'
2	Set 3/4" x 18" Iron Rod North Side of a 15" Maple	N 61°11'19" E	62.59'
3	Set 3/4" x 18" Iron Rod North Side of a 24" White Oak	S 05°38'44" W	47.43'
4	Set 3/4" x 18" Iron Rod 1' East of a 10" White Oak	S 67°08'32" W	73.52'

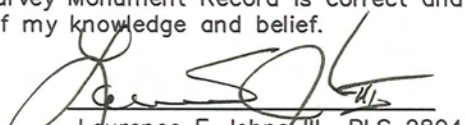


PLAN VIEW DRAWING OF REFERENCE TIES

Map Showing Distance And Direction To Other Public Land Survey Corners Used For Re-Establishing The Corner



I, Laurence E Johns III RLS 2804, Registered Land Surveyor, hereby certify that the corner location shown on this record was determined by me or under my direction and control, and that this U.S. Public Land Survey Monument Record is correct and complete to the best of my knowledge and belief.

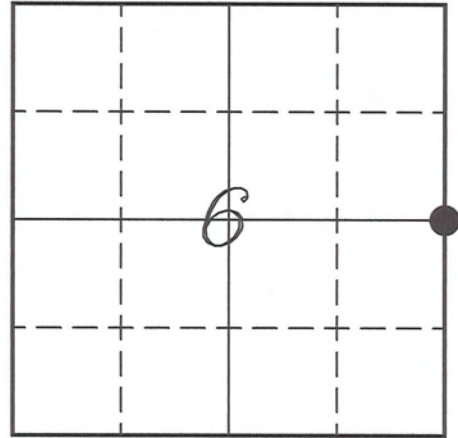

 Laurence E Johns III RLS 2804
 Eagle Ridge Surveying, LLC
 PO Box 213
 Wilton, Wisconsin
 22 March 2010

VERNON COUNTY COORDINATE SUBMISSION FORM
"As An Addendum To"
VERNON COUNTY
CERTIFIED U.S. PUBLIC LAND SURVEY MONUMENT RECORD

INSTRUCTIONS: THIS RECORD FORM SHOULD BE USED WHEN COORDINATES ARE PROVIDED FOR A PUBLIC LAND SURVEY CORNER AND SHALL INCLUDE ALL OF THE FOLLOWING ELEMENTS (A-D)

(A) IDENTIFY THE CORNER BY REFERENCE TO THE U.S. PUBLIC LAND SURVEY SYSTEM IN DIAGRAM AT RIGHT

● = CORNER MONUMENT



T 14 N, R 5 W

(B) COORDINATES:

GEOGRAPHIC (Degrees Minutes Seconds)

LATITUDE: 43° 43' 01.1176" N

LONGITUDE: 91° 00' 36.8881" W

ELLIPSOID HT (m): _____

DATUM: NAD 1983 (2007)

GEOID03 ADJ: -32.361

ORTHOMETRIC HT: _____

VERNON COUNTY (U.S. FEET)

Coord Quality (+/-)

NORTHING (Y): 207770.045 _____

EASTING (X): 670003.640 _____

GPS METHOD USED TO COMPUTE COORDINATES (check as applicable)

- RTK Observations Static Baselines OPUS-RS Solution OPUS-S Solution
 Combination of GPS Observations & Conventional Procedures

Was a Least Squares Adjustment Used to Compute Coordinates? Yes / No

BASE CONTROL USED FOR COORDINATE COMPUTATION

Station Name	Station Coordinates	Date/Time
<u>OPUS Station - CN07</u>	<u>43° 42' 15.5488" N 91° 01' 07.7465" W</u> <u>N - 203162.047 E - 667724.176</u>	<u>03/18/2010 - 16:41</u>
<u>OPUS Station - CN07</u>	_____	<u>03/22/2010 - 12:07</u>

(C) REASON FOR COORDINATES SUBMITTAL (check one)

- Being Filed With a New U.S. PLS Monument Record
 To Correct the Coordinates Listed on a Previously Filed PLS Monument Record
 To Provide Coordinates for Previously Filed PLS Monument Record without Coordinates
 To Provide Supplemental Coordinates for a Previously Filed PLS Monument Record

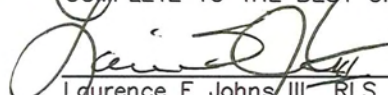
MOST RECENT PLS MONUMENT RECORD DATE:

R.L.S. WHO CREATED MOST RECENT PLS MONUMENT RECORD:

(D) AGENT(S) PERFORMING GPS OBSERVATIONS & COORDINATE COMPUTATION

- 1) LAURENCE E JOHNS III
 2) _____

I, LAURENCE E JOHNS III RLS 2804, REGISTERED LAND SURVEYOR, HEREBY CERTIFY THAT THE COORDINATES PROVIDED ON THIS RECORD WERE DETERMINED BY ME OR UNDER MY DIRECTION AND CONTROL AND THAT THIS COORDINATE SUBMISSION FORM IS CORRECT AND COMPLETE TO THE BEST OF MY KNOWLEDGE AND BELIEF.


 Laurence E Johns III RLS 2804
 Eagle Ridge Surveying, LLC
 PO Box 213
 Wilton, Wisconsin
 22 March 2010

