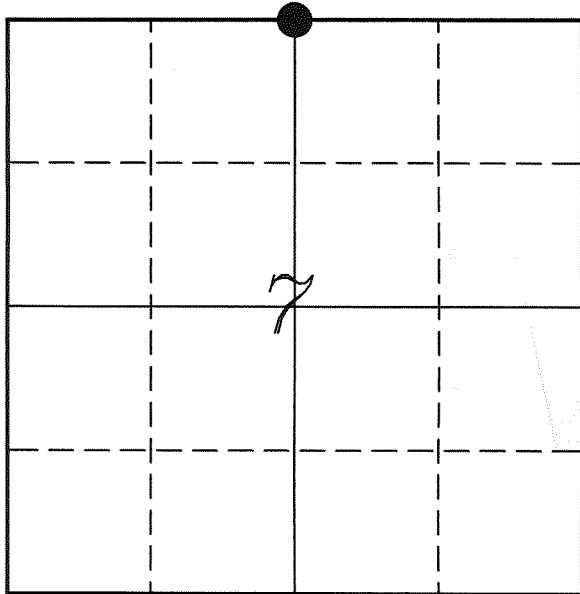


U. S. PUBLIC LAND SURVEY MONUMENT RECORD

SECTION 7, T14N, R5W, TOWN OF COON VERNON COUNTY, WISCONSIN



LOCATION OF LANDMARK

Crew: Laurence E Johns III
Larry Handschy
Jeremy Zellmer

Date: 18 March 2010

VERNON COUNTY COORDINATE SYSTEM	
Northing	205119.456
Easting	667456.559
Datum	NAD 1983 (2007)
Elevation	
Datum	
TYPE OF LANDMARK:	
Set Lunde Monument	
BEARINGS ARE REFERENCED TO:	
Vernon County Coordinates	

Describe any record evidence, monument evidence, testimonial evidence or any other material evidence you considered and whether the monument was found or restored through acceptance of an obliterated evidence location.

I found the 3/4" Iron Rod mentioned in the many previous surveys.

No remnants of the mound and pit from the original government survey was noted.

None of the re-surveys done by Knower mentions any bearing trees.

Since the 3/4" Iron Rod has been used in many surveys throughout this area and the distances to other monuments fits well with older surveys, I accepted its location as the best available evidence of the original government corner.

Replaced the Iron Rod with a Lunde Monument.

Describe or show any material discrepancy between the location of the restored corner and that of the corner previously restored or re-established.

Alfred Brown established this corner in October 1846.

Wm Knower was at this corner, in August 1879, during a survey in Section 7. He did not locate the government corner and obtained a sworn statement from the land owner on the location.

Wm Knower was at this corner again, in December 1882, during a survey in Section 6. He notes that he found the government corner.

F C Crook was at this corner, in May 1991, during the survey in Section 7. He sets a 3/4" Iron Rod at this location.

Robert Lampman was at this corner, in November 1992, during a survey in Coon Valley and finds Crook's 3/4" Iron Rod.

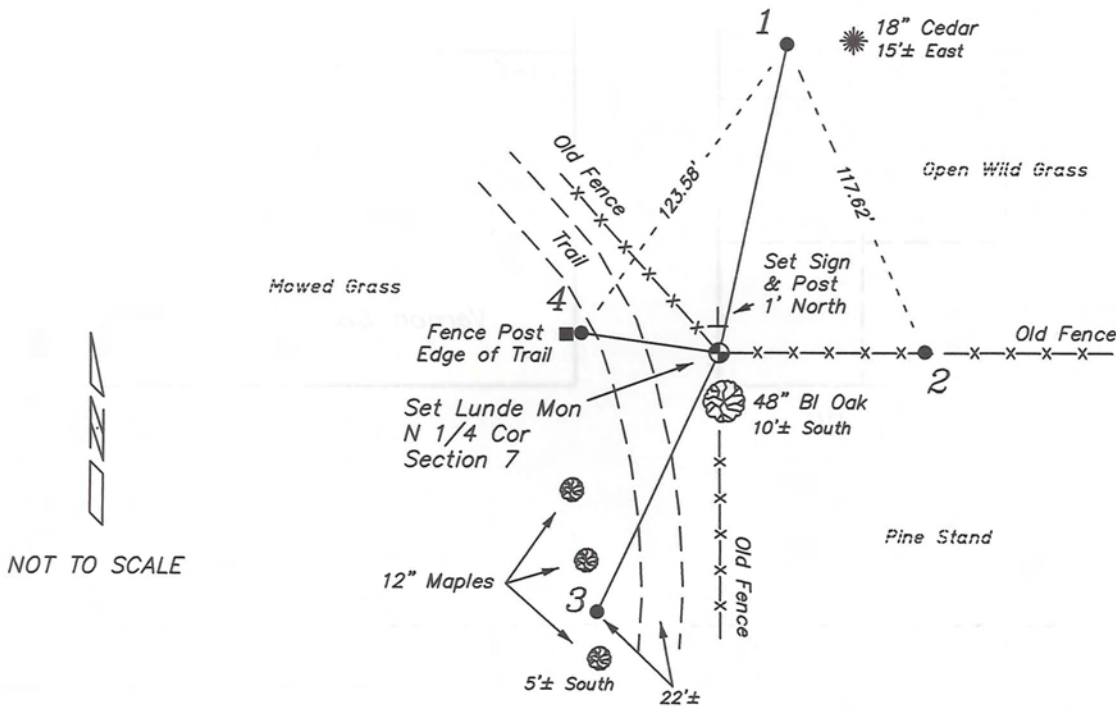
Chris Fechner was at this corner, in June 1999, during a survey in Section 6. He found a 3/4" Iron Rod.

Curt Cummer was at this corner, in May 2001, during a survey in Coon Valley. He found a 3/4" Iron Rod.

Paul Fairchild was at this corner, in May 2003, during a survey in Coon Valley, He found a 3/4" Iron Rod.

RECORD OF DURABLE WITNESS MONUMENTS

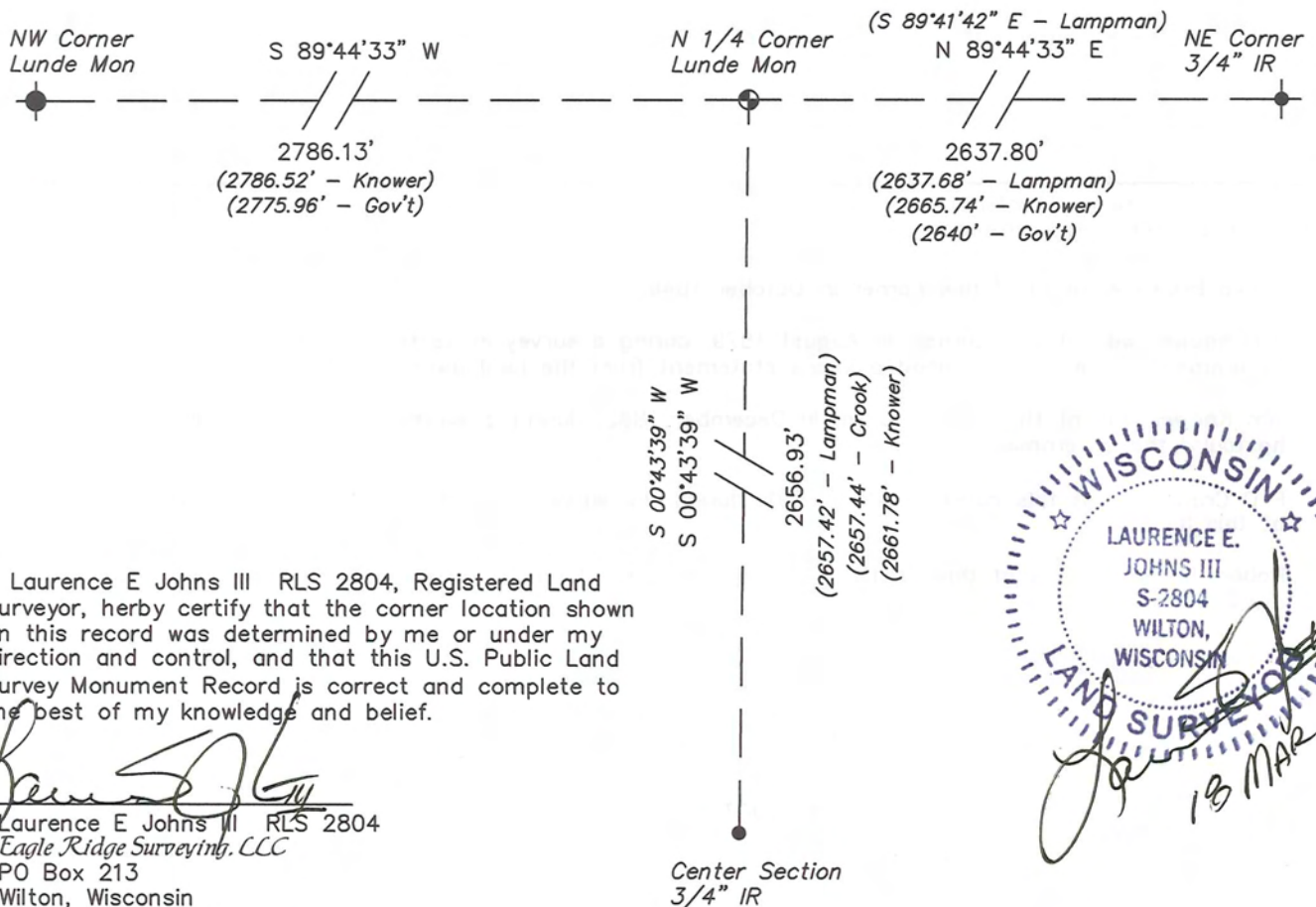
NO	DESCRIPTION	BEARING	DISTANCE
1	Set 3/4" x 18" Iron Rod 15' West of a 18" Cedar	N 12°14'36" E	110.18'
2	Set 3/4" x 18" Iron Rod In Old Fence Line	N 89°39'30" E	71.67'
3	Set 3/4" x 18" Iron Rod 5' North of a 12" Maple	S 25°02'43" W	99.36'
4	Set 3/4" x 18" Iron Rod East Side of a Post	N 81°58'43" W	48.44'



NOT TO SCALE

PLAN VIEW DRAWING OF REFERENCE TIES

Map Showing Distance And Direction To Other Public Land Survey
Corners Used For Re-Establishing The Corner



I, Laurence E Johns III RLS 2804, Registered Land Surveyor, hereby certify that the corner location shown on this record was determined by me or under my direction and control, and that this U.S. Public Land Survey Monument Record is correct and complete to the best of my knowledge and belief.

Laurence E. Johns III
 Laurence E Johns III RLS 2804
 Eagle Ridge Surveying, LLC
 PO Box 213
 Wilton, Wisconsin
 18 March 2010



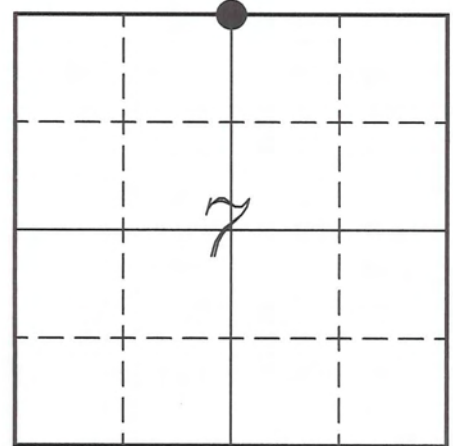
Center Section
3/4" IR

VERNON COUNTY COORDINATE SUBMISSION FORM
 "As An Addendum To"
VERNON COUNTY
CERTIFIED U.S. PUBLIC LAND SURVEY MONUMENT RECORD

INSTRUCTIONS: THIS RECORD FORM SHOULD BE USED WHEN COORDINATES ARE PROVIDED FOR A PUBLIC LAND SURVEY CORNER AND SHALL INCLUDE ALL OF THE FOLLOWING ELEMENTS (A-D)

(A) IDENTIFY THE CORNER BY REFERENCE TO THE U.S. PUBLIC LAND SURVEY SYSTEM IN DIAGRAM AT RIGHT

● = CORNER MONUMENT



T 14 N, R 5 W

(B) COORDINATES:

GEOGRAPHIC (Degrees Minutes Seconds)

LATITUDE: 43° 42' 34.8716" N

LONGITUDE: 91° 01' 11.4653" W

ELLIPSOID HT (m): _____

DATUM: NAD 1983 (2007)

GEOID03 ADJ: -32.326

ORTHOMETRIC HT: _____

VERNON COUNTY (U.S. FEET)

Coord Quality (+/-)

NORTHING (Y): 205119.456 _____

EASTING (X): 667456.559 _____

GPS METHOD USED TO COMPUTE COORDINATES (check as applicable)

- RTK Observations Static Baselines OPUS-RS Solution OPUS-S Solution
 Combination of GPS Observations & Conventional Procedures

Was a Least Squares Adjustment Used to Compute Coordinates? Yes / No

BASE CONTROL USED FOR COORDINATE COMPUTATION

Station Name	Station Coordinates	Date/Time
<u>OPUS Station - CN07</u>	<u>43° 42' 15.5488" N 91° 01' 07.7465" W</u>	<u>03/15/2010 - 12:42</u>
	<u>N - 203162.047 E - 667724.176</u>	
<u>Same</u>		<u>03/18/2010 - 14:05</u>

(C) REASON FOR COORDINATES SUBMITTAL (check one)

- Being Filed With a New U.S. PLS Monument Record
 To Correct the Coordinates Listed on a Previously Filed PLS Monument Record
 To Provide Coordinates for Previously Filed PLS Monument Record without Coordinates
 To Provide Supplemental Coordinates for a Previously Filed PLS Monument Record

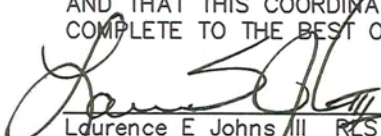
MOST RECENT PLS MONUMENT RECORD DATE:

R.L.S. WHO CREATED MOST RECENT PLS MONUMENT RECORD:

(D) AGENT(S) PERFORMING GPS OBSERVATIONS & COORDINATE COMPUTATION

- 1) LAURENCE E JOHNS III
 2) _____

I, LAURENCE E JOHNS III RLS 2804, REGISTERED LAND SURVEYOR, HEREBY CERTIFY THAT THE COORDINATES PROVIDED ON THIS RECORD WERE DETERMINED BY ME OR UNDER MY DIRECTION AND CONTROL AND THAT THIS COORDINATE SUBMISSION FORM IS CORRECT AND COMPLETE TO THE BEST OF MY KNOWLEDGE AND BELIEF.


 Laurence E Johns III RLS 2804
 Eagle Ridge Surveying, LLC
 PO Box 213
 Wilton, Wisconsin
 18 March 2010

