

Vernon County Certified U.S. Public Land Survey Monument Record

INSTRUCTIONS: THIS RECORD SHALL SHOW THE LOCATION OF THE CORNER AND SHALL INCLUDE ALL OF THE FOLLOWING ELEMENTS (A-I)

(A) IDENTIFY THE CORNER BY REFERENCE TO THE U.S. PUBLIC LAND SURVEY SYSTEM

■ = CORNER MONUMENT RESTORED

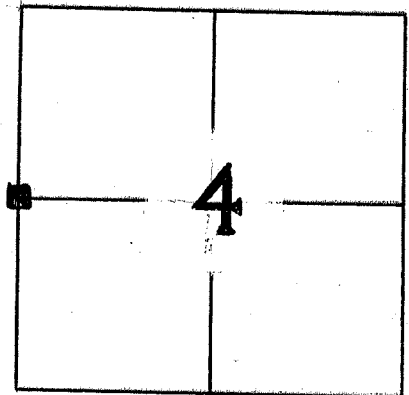
WITNESSES TO CORNER LOCATION: **RODNEY H. MAXWELL**
LAURENCE E. JOHNS III

STATE PLANE COORDINATES (WISCONSIN SOUTH ZONE)

NORTHING: NOT DETERMINED
EASTING: NOT DETERMINED

VERNON COUNTY COORDINATES

NORTHING: 207800.119
EASTING: 675302.221



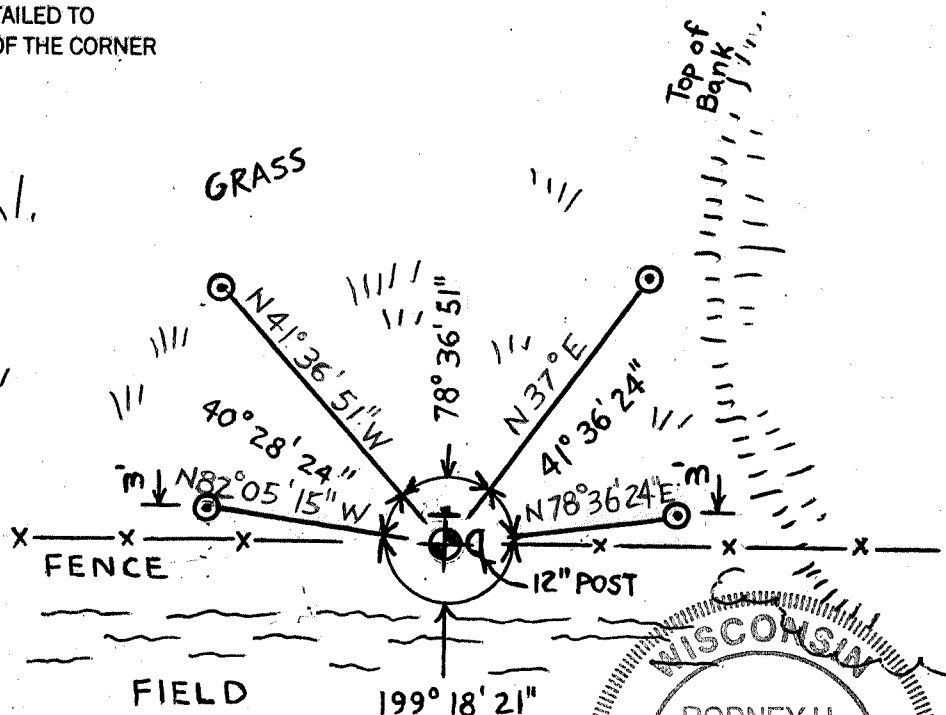
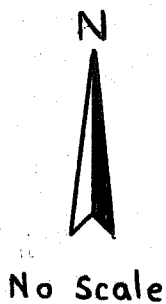
W. 1/4 Cor. SECTION 4
T. 14N., R. 5W., TOWN OF
COON, VERNON CO., WIS.

(B) DESCRIBE ANY RECORD EVIDENCE, MONUMENT EVIDENCE, OCCUPATIONAL EVIDENCE, TESTIMONIAL EVIDENCE OR ANY OTHER MATERIAL EVIDENCE YOU CONSIDERED, AND WHETHER THE MONUMENT WAS FOUND OR PLACED.

PAUL W. CHAFER SHOWS A 1/4" REBAR FOUND AT THIS CORNER ON A PLAT OF SURVEY AND A TIE SHEET DATED 2/17/(1987). I FOUND THE BAR AND REPLACED IT WITH A VERNON COUNTY MONUMENT.

(C) IN THE PLAN VIEW DRAWING BELOW, PROVIDE REFERENCE TIES TO AT LEAST 4 WITNESS MONUMENTS OR, IF THE LOCATION IS WITHIN A MUNICIPALITY, TO AT LEAST 2 WITNESS MONUMENTS, (WITNESS MONUMENTS SHALL MEET STATE AND VERNON COUNTY REQUIREMENTS.)

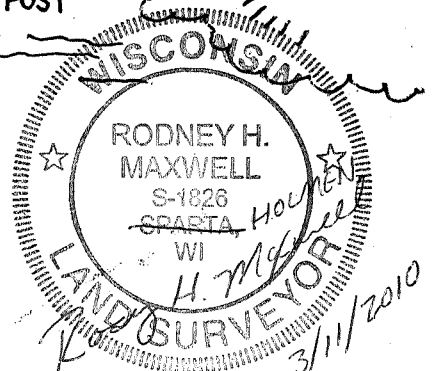
(D) SHOW A PLAN VIEW DRAWING, DEPICTING THE RELEVANT MONUMENTS AND REFERENCE TIES, WHICH IS SUFFICIENTLY DETAILED TO ENABLE ACCURATE RELOCATION OF THE CORNER MONUMENT IF IT IS DISTURBED.



⊕ = VERNON COUNTY MONUMENT SET

⊙ = 1 1/4" x 18" IRON PIPE SET

SIGN ON POST SET 3" NORTH OF MONUMENT



(E) DESCRIBE ANY MATERIAL DISCREPANCY BETWEEN THE LOCATION OF THE CORNER AS RESTORED OR REESTABLISHED AND THE LOCATION OF THAT CORNER AS PREVIOUSLY RESTORED OR REESTABLISHED BY DISTANCE AND DIRECTION. SHOW THE DISCREPANCY ON THE PLAN VIEW DRAWING UNDER (D) ABOVE. SHOW THE DISTANCES BETWEEN THE CORNER AS PREVIOUSLY RESTORED OR REESTABLISHED AND (1) THE CORNER AS RESTORED OR REESTABLISHED, AND (2) TO AT LEAST 2 OF THE WITNESS MONUMENTS AS SHOWN ON THE DRAWING IN (D), ABOVE.

N. A.

(F) WAS THE CORNER RESTORED THROUGH THE ACCEPTANCE OF (1) AN OBLITERATED EVIDENCE LOCATION, OR (2) A FOUND PERPETUATED LOCATION?

2.

(G & H) WAS THE CORNER REESTABLISHED THROUGH LOST CORNER PROPORTIONATE METHOD? IF SO, SHOW THE METHOD, INCLUDING THE DIRECTION AND DISTANCE TO THE OTHER PUBLIC SURVEY CORNERS USED AS EVIDENCE OR USED FOR PROPORTIONING IN DETERMINING THE CORNER LOCATION.

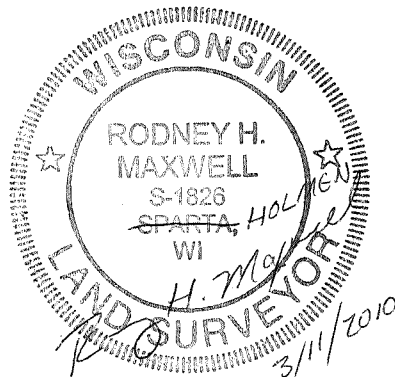
No.

ADDITIONAL SURVEYOR COMMENTS: ACCEPTED LOCATION OF 1/4" ROD.

(I) I, RODNEY H. MAXWELL, REGISTERED LAND SURVEYOR, HEREBY CERTIFY THAT THE LOCATION SHOWN ON THIS RECORD WAS DETERMINED BY ME AND THAT THIS RECORD IS CORRECT AND COMPLETE TO THE BEST OF MY KNOWLEDGE AND BELIEF.

R. H. Maxwell
RODNEY H. MAXWELL WISCONSIN RLS, S-1826
623 AMY DR #13
HOLMEN, WI 54636

3/11/2010
DATE

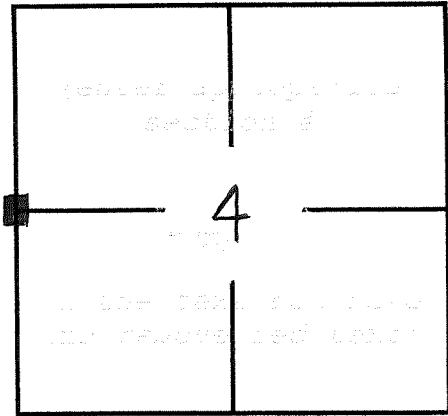


VERNON COUNTY COORDINATE FORM
 "As An Addendum To"
 A CERTIFIED U.S. PUBLIC LAND SURVEY MONUMENT RECORD

INSTRUCTIONS: THIS RECORD FORM SHOULD BE USED WHEN COORDINATES ARE PROVIDED FOR A PUBLIC LAND SURVEY CORNER AND SHALL INCLUDE ALL OF THE FOLLOWING ELEMENTS (A-D)

(A) IDENTIFY THE CORNER BY REFERENCE TO THE U.S. PUBLIC LAND SURVEY SYSTEM IN DIAGRAM AT RIGHT

■ = CORNER MONUMENT



T 14 N, R 5 ■ W

(B) COORDINATES:

GEOGRAPHIC (Degrees Minutes Decimal Seconds to 4 places):

LATITUDE: 43° 43' 01.5511" N

LONGITUDE: 90° 59' 24.7459" W

ELLIPSOID HT (m): _____

HORIZONTAL DATUM: _____

ORTHOMETRIC HT (U.S. ft): _____

VERTICAL DATUM: _____

VERNON COUNTY (U.S. FEET)

Coord. Quality (+/-)

NORTHING (Y): 207800.119

EASTING (X): 675302.221

METHOD USED TO COMPUTE COORDINATES (check and complete as applicable):

RTK Observations Static Baselines OPUS Solution (attach copy of OPUS report)

Combination of conventional procedures with GPS observations to set temporary control

Was a Least Squares Adjustment Used to Compute Coordinate? Yes / No

For Non-OPUS Based Solutions, List the Control Stations Used for Coordinate Computations (a minimum of 2 different control stations or 2 different time combinations from the same control station are required):

Obs. #	Control Station Name	Station Coordinates (Lat/Long)	Date	Time

* Please List Additional Control Stations Used on Back of Form

When a direct observation of the corner is not possible, and a combination of different GPS and/or conventional procedures must be used to determine coordinate values, provide a brief description of your procedures on the back of form.

(C) REASON FOR COORDINATE SUBMITTAL (check one):

- Being Filed With a New U.S. PLS Monument Record
- To Correct the Coordinates Listed on a Previously Filed PLS Monument Record
- To Provide Coordinates for a Previously Filed PLS Monument Record without Coordinates
- To Provide Supplemental Coordinates for a Previously Filed PLS Monument Record

R.L.S. & DATE OF PLS MONUMENT RECORD: Rodney H. Maxwell S1826 3/11/2010

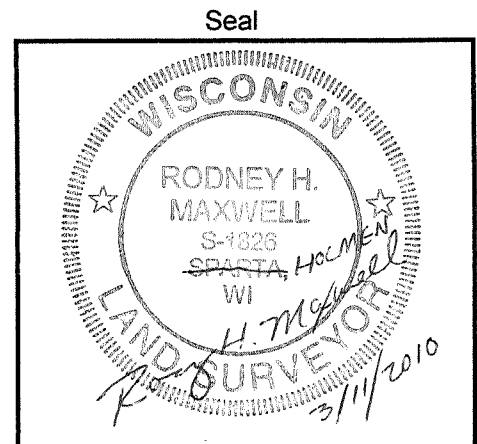
(D) AGENT(S) PERFORMING GPS OBSERVATIONS & COORDINATE COMPUTATION Paul W. Chafer S1521 2/17/1987

- 1) Laurence E. Johns III
- 2) _____

I, Rodney H. Maxwell

CERTIFY THAT THE COORDINATES PROVIDED ON THIS RECORD WERE DETERMINED BY ME OR UNDER MY DIRECTION AND CONTROL AND THAT THIS COORDINATE SUBMISSION FORM IS CORRECT AND COMPLETE TO THE BEST OF MY KNOWLEDGE AND BELIEF.

Rodney H. Maxwell 3/11/2010
 SIGNATURE DATE



* Please Provide Any Additional Notes/Information on Back of Form

Received
Feb 23, 1987
10:00 AM

RECORD OF CORNER MONUMENTATION

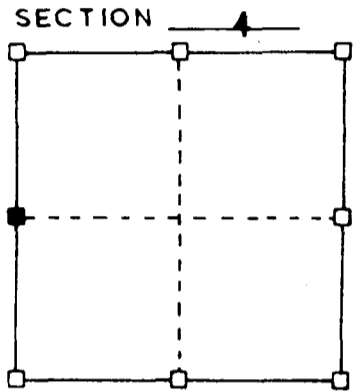
WEST 1/4 CORNER, SECTION 4 TOWNSHIP 14 N., RANGE 5 West
Vernon COUNTY, WISCONSIN.

STATE PLANE COORDINATES OF _____
(Y) NORTH _____ ELEVATION _____
(X) EAST _____

HORIZONTAL DATUM: WISCONSIN STATE PLANE COORDINATE SYSTEM, SOUTH ZONE

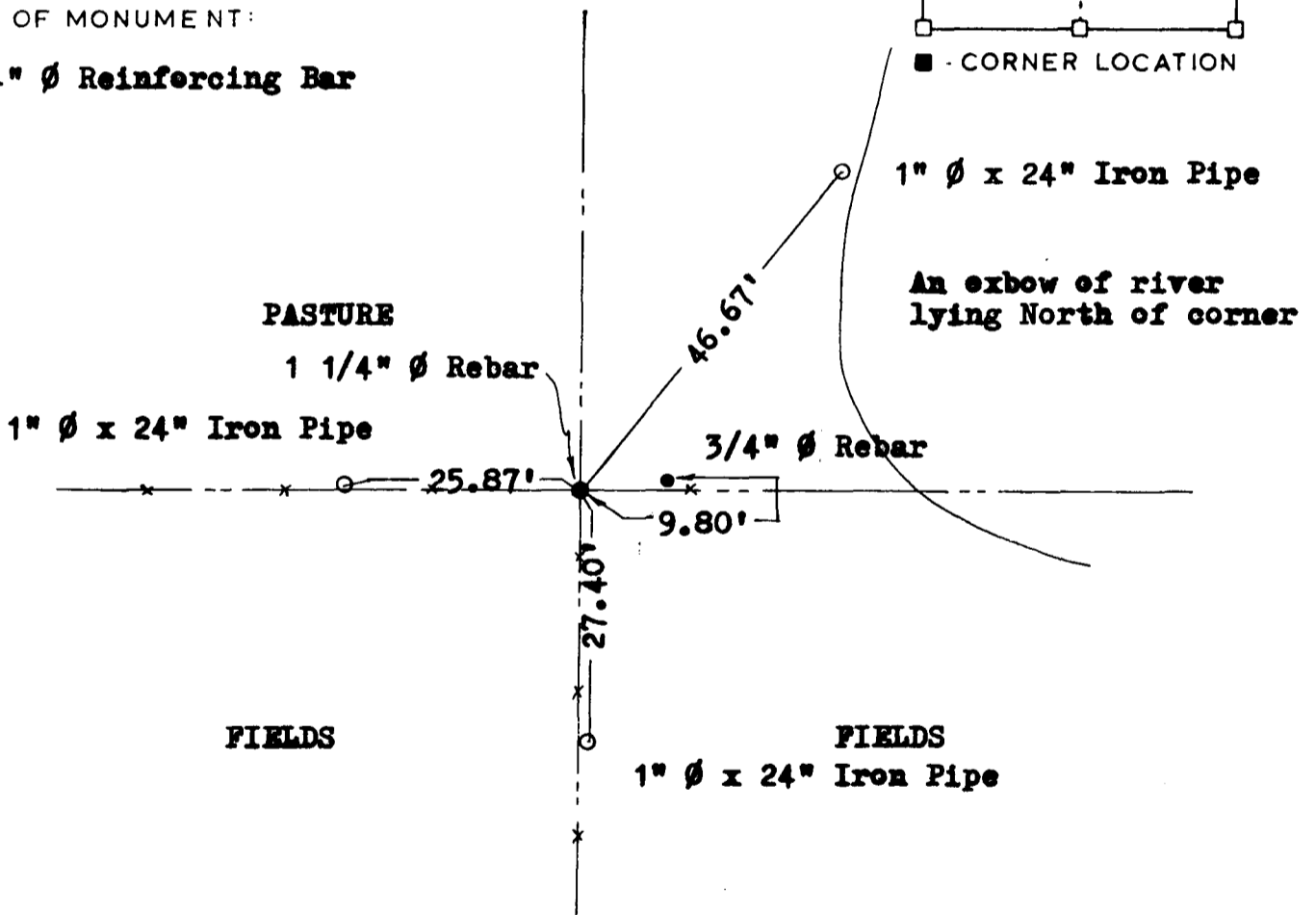


SKETCH OF CORNER REFERENCE TIES



TYPE OF MONUMENT:

1 1/4" \emptyset Reinforcing Bar

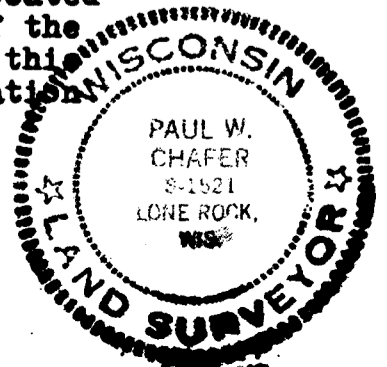


SURVEYOR'S CERTIFICATE
STATE OF WISCONSIN)
VERNON COUNTY)

I HEREBY CERTIFY THAT this corner was originally established by Alfred Brown in 1846. The section was resurveyed by William Knever in 1883, however, he makes no mention of this corner. A 1 1/4" diameter reinforcing bar was located at the fence intersection and a subsequent traverse of the south and west line of said section further verified this position. The ties shown were set such that this location may be perpetuated.

DATED THIS 17th DAY OF February.

Paul W. Chafar
REGISTERED LAND SURVEYOR
S-1521



①