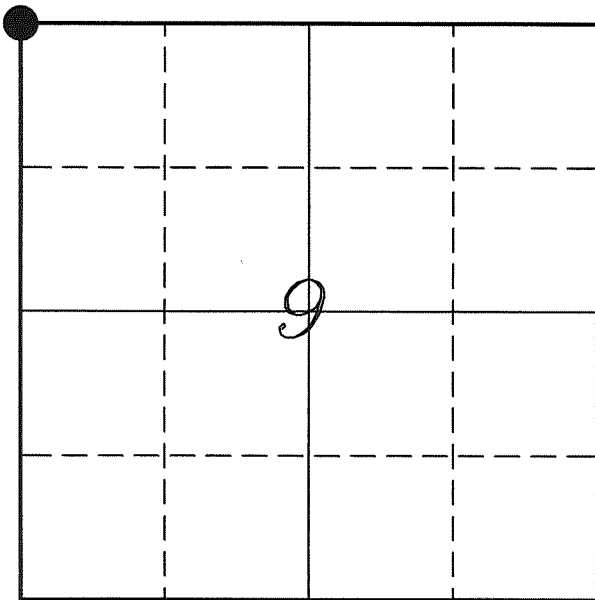

U. S. PUBLIC LAND SURVEY MONUMENT RECORD

SECTION 9, T14N, R5W, TOWN OF COON VERNON COUNTY, WISCONSIN



LOCATION OF LANDMARK

Crew: Laurence E Johns III
Larry Handschy

Date: 10 April 2009

VERNON COUNTY COORDINATE SYSTEM	
Northing	205176.912
Easting	675379.619
Elevation	
TYPE OF LANDMARK:	
Set Lunde Monument	
BEARINGS ARE REFERENCED TO:	
Vernon County Coordinates	

Describe any record evidence, monument evidence, testimonial evidence or any other material evidence you considered and whether the monument was found or restored through acceptance of an obliterated evidence location.

Did not locate any bearing trees of record.

Wm Knowler set a stone marked '+' at the '40' Corner West of here during his survey of June 1887 and also set a stone marked '+' at the '40' Corner east of this corner during his survey of October 1888. I searched extensively for both stones, was unsuccessful in finding either stone. There are very good fence corners at both '40' Corners.

I found that using the '40' fence corners East and West of here and doubling the distance from the 1/4 Corners came to approximately the same location. This location fit to within 4 feet of the occupied centerline of CTH 'P'.

It also fit very well with distances to the W 1/4 of Section 4 and the occupied location of the W 1/4 of Section 9.

I determined this location to be the best available evidence of the original government corner.

The location of this corner is in the shoulder of the highway so I set the monument down 6" so not to be disturbed during shoulder maintenance.

Describe or show any material discrepancy between the location of the restored corner and that of the corner previously restored or re-established.

This corner was established by Alfred Brown in October 1846.

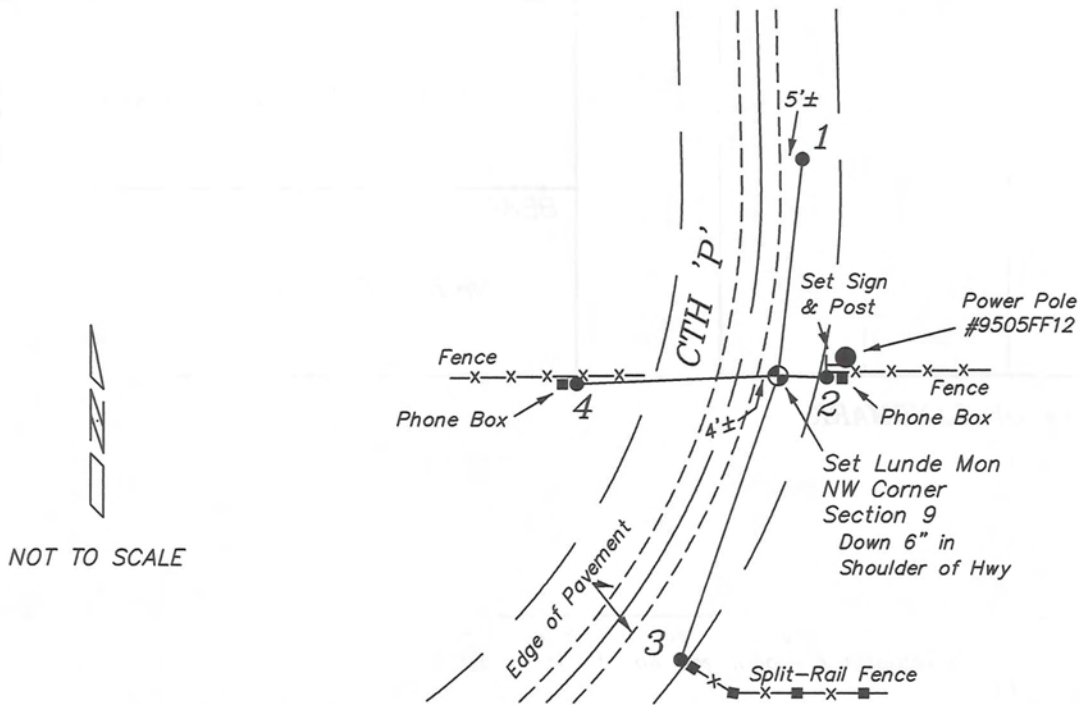
Wm Knowler was here, in October 1885, during a Road Alteration Survey. He ran the centerline of the road (now CTH 'P') along the section line, North of this corner.

Wm Knowler was here, in June 1887, shows that this corner was lost and re-established this corner by running a line between the E 1/4 Corner of Section 5 to the SE Corner of Section 17.

Wm Knowler was here again, in October 1888, during a survey of Section 4 and only shows the West line as being done in a former survey.

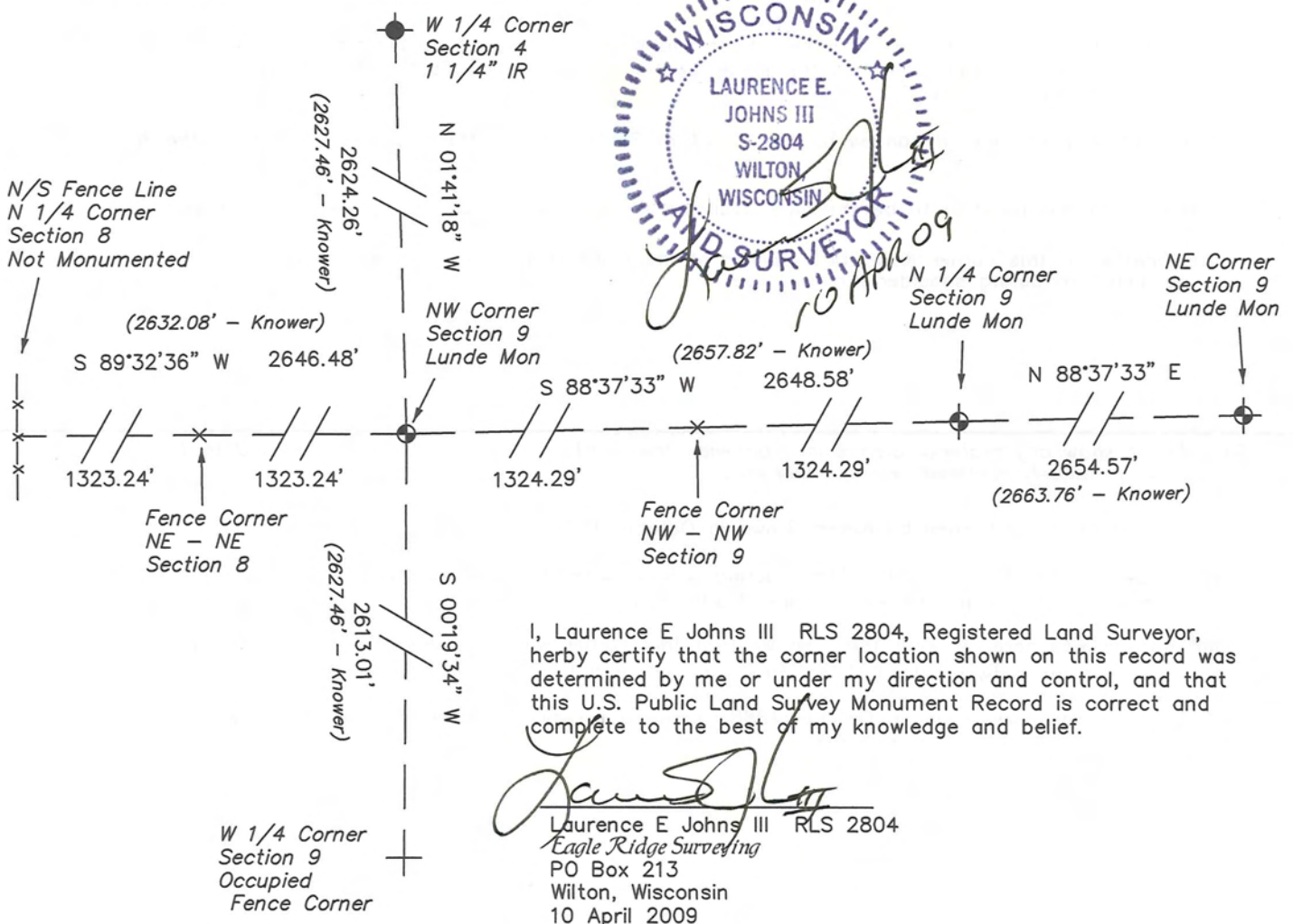
RECORD OF DURABLE WITNESS MONUMENTS

NO	DESCRIPTION	BEARING	DISTANCE
1	Set 3/4" x 18" Iron Rod In Shoulder, 3' From Pavement	N 06°31'46" E	90.80'
2	Set 3/4" x 18" Iron Rod West Side of Phone Box	S 88°17'26" E	20.29'
3	Set 3/4" x 18" Iron Rod NW Edge of Wooden Fence Post	S 18°50'39" W	124.85'
4	Set 3/4" x 18" Iron Rod E Side of Phone Box, S Side Of Fence	S 87°31'34" W	83.81'



PLAN VIEW DRAWING OF REFERENCE TIES

Map Showing Distance And Direction To Other Public Land Survey
Corners Used For Re-Establishing The Corner.



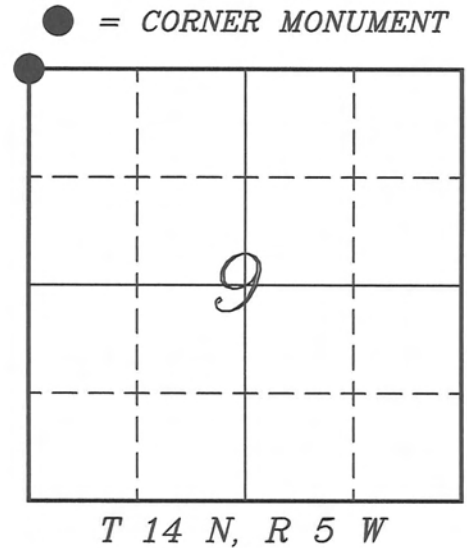
I, Laurence E Johns III RLS 2804, Registered Land Surveyor, hereby certify that the corner location shown on this record was determined by me or under my direction and control, and that this U.S. Public Land Survey Monument Record is correct and complete to the best of my knowledge and belief.

Laurence E Johns III RLS 2804
 Eagle Ridge Surveying
 PO Box 213
 Wilton, Wisconsin
 10 April 2009

VERNON COUNTY COORDINATE SUBMISSION FORM
"As An Addendum To"
VERNON COUNTY
CERTIFIED U.S. PUBLIC LAND SURVEY MONUMENT RECORD

INSTRUCTIONS: THIS RECORD FORM SHOULD BE USED WHEN COORDINATES ARE PROVIDED FOR A PUBLIC LAND SURVEY CORNER AND SHALL INCLUDE ALL OF THE FOLLOWING ELEMENTS (A-D)

(A) IDENTIFY THE CORNER BY REFERENCE TO THE U.S. PUBLIC LAND SURVEY SYSTEM IN DIAGRAM AT RIGHT



(B) COORDINATES:

GEOGRAPHIC (Degrees Minutes Seconds)
 LATITUDE: 43° 42' 35.648" N
 LONGITUDE: 90° 59' 23.603" W
 ELLIPSOID HT (m): _____
 DATUM: NAD 1983 (2007)
 GEOID99 ADJ: -32.442
 OTHROMETRIC HT: _____

VERNON COUNTY (U.S. FEET) Coord Quality (+/-)
 NORTHING (Y): 205176.912 _____
 EASTING (X): 675379.619 _____

GPS METHOD USED TO COMPUTE COORDINATES (check as applicable)

- RTK Observations Static Baselines OPUS-RS Solution OPUS-S Solution
 Combination of GPS Observations & Conventional Procedures

Was a Least Squares Adjustment Used to Compute Coordinates? Yes / No

BASE CONTROL USED FOR COORDINATE COMPUTATION

Station Name	Station Coordinates	Date/Time
<u>OPUS Control Station</u>	<u>43° 42' 28.635" N 90° 58' 12.205" W</u> <u>N - 204454.358 E - 680622.602</u>	<u>04/07/2009 - 16:12</u>
<u>OPUS Control Station</u>	<u>43° 42' 38.512" N 90° 59' 26.665" W</u> <u>N - 205467.519 E - 675155.446</u>	<u>04/14/2009 - 15:27</u>

(C) REASON FOR COORDINATES SUBMITTAL (check one)

- Being Filed With a New U.S. PLS Monument Record
 To Correct the Coordinates Listed on a Previously Filed PLS Monument Record
 To Provide Coordinates for Previously Filed PLS Monument Record without Coordinates
 To Provide Supplemental Coordinates for a Previously Filed PLS Monument Record

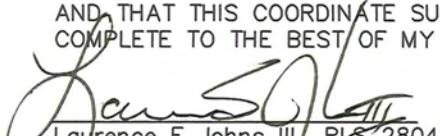
MOST RECENT PLS MONUMENT RECORD DATE:

R.L.S. WHO CREATED MOST RECENT PLS MONUMENT RECORD:

(D) AGENT(S) PERFORMING GPS OBSERVATIONS & COORDINATE COMPUTATION

- 1) LAURENCE E JOHNS III
 2) _____

I, LAURENCE E JOHNS III RLS 2804, REGISTERED LAND SURVEYOR, HEREBY CERTIFY THAT THE COORDINATES PROVIDED ON THIS RECORD WERE DETERMINED BY ME OR UNDER MY DIRECTION AND CONTROL AND THAT THIS COORDINATE SUBMISSION FORM IS CORRECT AND COMPLETE TO THE BEST OF MY KNOWLEDGE AND BELIEF.


 Laurence E Johns III RLS 2804
 Eagle Ridge Surveying
 PO Box 213
 Wilton, Wisconsin
 10 April 2009

