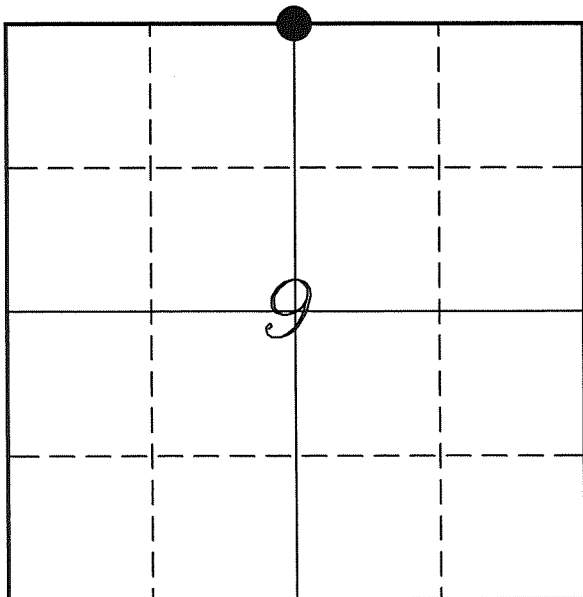

U. S. PUBLIC LAND SURVEY MONUMENT RECORD

SECTION 9, T14N, R5W, TOWN OF COON VERNON COUNTY, WISCONSIN



LOCATION OF LANDMARK

Crew: Laurence E Johns III

Date: 6 April 2009

VERNON COUNTY COORDINATE SYSTEM	
Northing	205240.435
Easting	678027.434
Elevation	
TYPE OF LANDMARK:	
Set Lunde Monument	
BEARINGS ARE REFERENCED TO:	
Vernon County Coordinates	

Describe any record evidence, monument evidence, testimonial evidence or any other material evidence you considered and whether the monument was found or restored through acceptance of an obliterated evidence location.

Did not locate any bearing trees of record.

Wm Knower set a stone marked '+' at this corner and at the '40' Corner west of this corner during his survey in October 1888. I searched extensively for both stones, was unsuccessful in finding either stone. There is a very good fence corner at the '40' Corner west of here. There is no occupation at the N 1/4 Corner.

After measuring the fence corner west of this location and the NE Corner of Section 10. I found that the distance between them fit very well with Knower's distances. I prorated the distance and ran a straight line between the fence corner and the NE Corner of Section 10.

This location also fit very well with the occupied center of Section 9 from Sterling's survey.

I determined this location to be the best available evidence of the original government corner.

Describe or show any material discrepancy between the location of the restored corner and that of the corner previously restored or re-established.

This corner was established by Alfred Brown in October 1846.

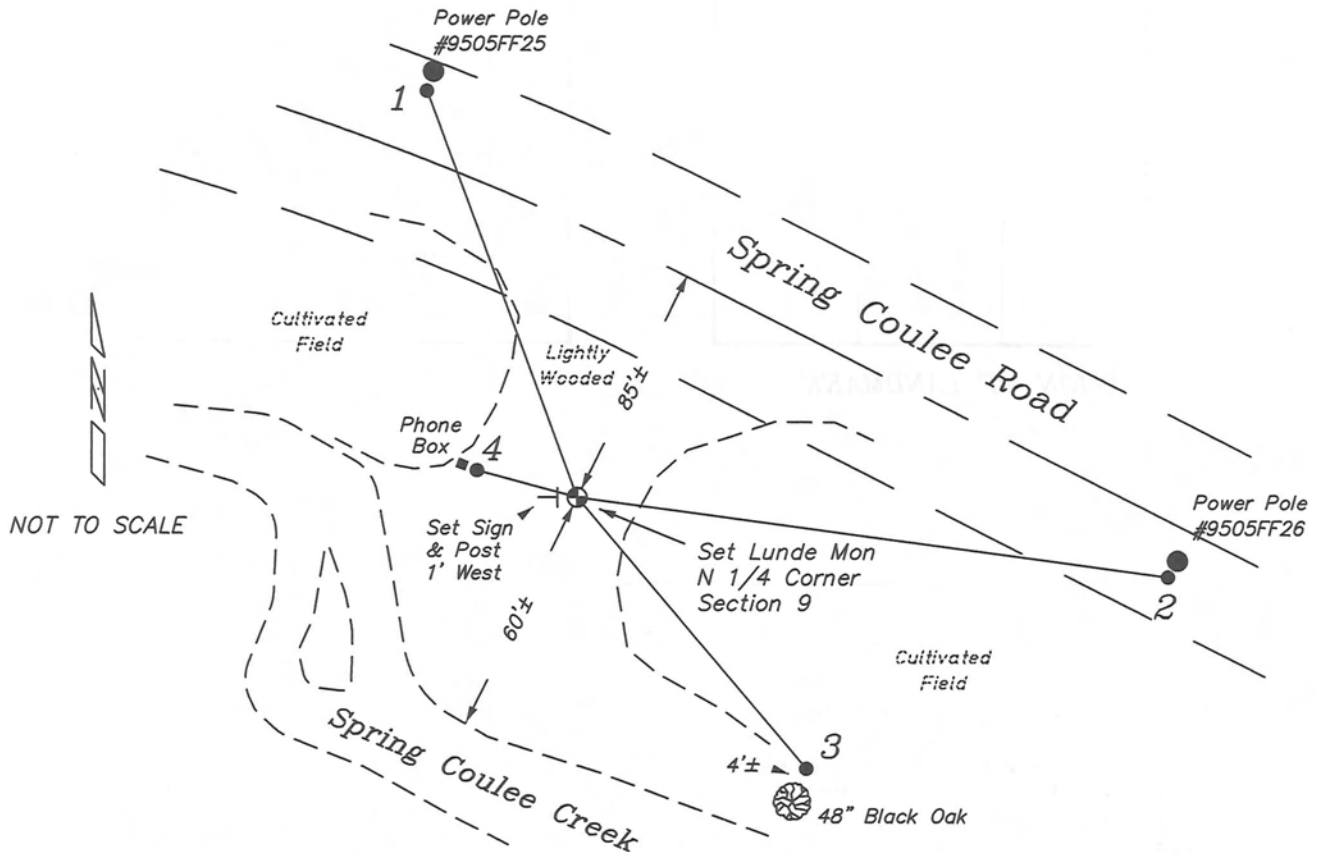
Wm Knower was here, in February 1883, during a survey of Section 4 and re-established the corner by agreement.

Wm Knower was here again, in October 1888, during a survey of Section 4 and set a Stone at this corner.

C M Sterling was here, in March 1892, during a survey of Section 9. He does not indicate whether or not he found Knower's stone.

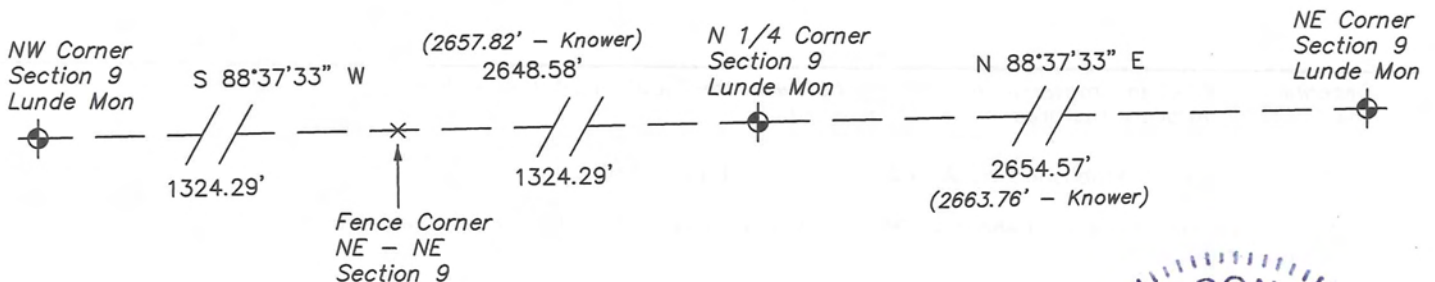
RECORD OF DURABLE WITNESS MONUMENTS

NO	DESCRIPTION	BEARING	DISTANCE
1	Set 3/4" x 18" Iron Rod 1' South of Power Pole #9505FF25	N 20°12'41" W	150.23'
2	Set 3/4" x 18" Iron Rod 1' South of Power Pole #9505FF26	S 82°21'13" E	206.62'
3	Set 3/4" x 18" Iron Rod 4' North of a 48" Black Oak	S 40°08'38" E	123.05'
4	Set 3/4" x 18" Iron Rod East Side of a Phone Cable Box	N 74°53'19" W	35.94'

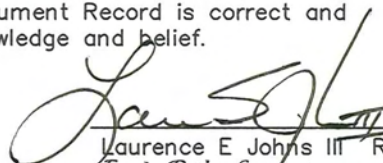


PLAN VIEW DRAWING OF REFERENCE TIES

Map Showing Distance And Direction To Other Public Land Survey Corners Used For Re-Establishing The Corner



I, Laurence E Johns III RLS 2804, Registered Land Surveyor, hereby certify that the corner location shown on this record was determined by me or under my direction and control, and that this U.S. Public Land Survey Monument Record is correct and complete to the best of my knowledge and belief.


 Laurence E Johns III RLS 2804
 Eagle Ridge Surveying
 PO Box 213
 Wilton, Wisconsin
 6 April 2009

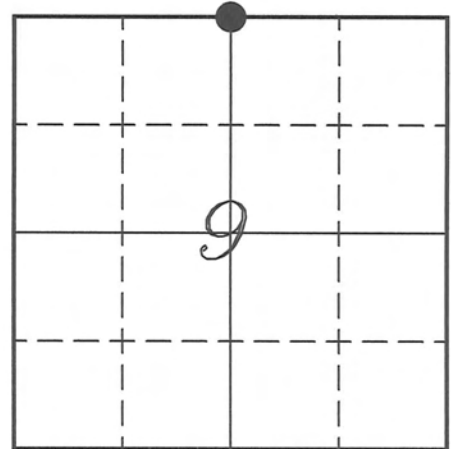


VERNON COUNTY COORDINATE SUBMISSION FORM
"As An Addendum To"
VERNON COUNTY
CERTIFIED U.S. PUBLIC LAND SURVEY MONUMENT RECORD

INSTRUCTIONS: THIS RECORD FORM SHOULD BE USED WHEN COORDINATES ARE PROVIDED FOR A PUBLIC LAND SURVEY CORNER AND SHALL INCLUDE ALL OF THE FOLLOWING ELEMENTS (A-D)

(A) IDENTIFY THE CORNER BY REFERENCE TO THE U.S. PUBLIC LAND SURVEY SYSTEM IN DIAGRAM AT RIGHT

● = CORNER MONUMENT



(B) COORDINATES:

GEOGRAPHIC (Degrees Minutes Seconds)

LATITUDE: 43° 42' 36.338" N

LONGITUDE: 90° 58' 47.558" W

ELLIPSOID HT (m): _____

DATUM: NAD 1983 (2007)

GEOID03 ADJ: -32.480

ORTHOMETRIC HT: _____

VERNON COUNTY (U.S. FEET)

Coord Quality (+/-)

NORTHING (Y): 205240.435

EASTING (X): 678027.434

GPS METHOD USED TO COMPUTE COORDINATES (check as applicable)

- RTK Observations Static Baselines OPUS-RS Solution OPUS-S Solution
 Combination of GPS Observations & Conventional Procedures

Was a Least Squares Adjustment Used to Compute Coordinates? Yes / No

BASE CONTROL USED FOR COORDINATE COMPUTATION

Station Name	Station Coordinates	Date/Time
<u>OPUS Control Station</u>	<u>43° 42' 28.635" N 90° 58' 12.205" W</u> <u>N - 204454.358 E - 680622.602</u>	<u>04/04/2009 - 13:42</u>
<u>OPUS Control Station</u>	<u>43° 42' 38.512" N 90° 59' 26.665" W</u> <u>N - 205467.519 E - 675155.446</u>	<u>04/14/2009 - 15:47</u>

(C) REASON FOR COORDINATES SUBMITTAL (check one)

- Being Filed With a New U.S. PLS Monument Record
 To Correct the Coordinates Listed on a Previously Filed PLS Monument Record
 To Provide Coordinates for Previously Filed PLS Monument Record without Coordinates
 To Provide Supplemental Coordinates for a Previously Filed PLS Monument Record

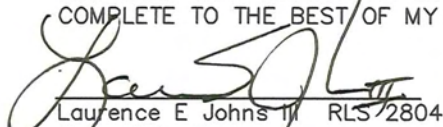
MOST RECENT PLS MONUMENT RECORD DATE:

R.L.S. WHO CREATED MOST RECENT PLS MONUMENT RECORD:

(D) AGENT(S) PERFORMING GPS OBSERVATIONS & COORDINATE COMPUTATION

- 1) LAURENCE E JOHNS III
 2) _____

I, LAURENCE E JOHNS III RLS 2804, REGISTERED LAND SURVEYOR, HEREBY CERTIFY THAT THE COORDINATES PROVIDED ON THIS RECORD WERE DETERMINED BY ME OR UNDER MY DIRECTION AND CONTROL AND THAT THIS COORDINATE SUBMISSION FORM IS CORRECT AND COMPLETE TO THE BEST OF MY KNOWLEDGE AND BELIEF.


 Laurence E Johns III RLS 2804
 Eagle Ridge Surveying
 PO Box 213
 Wilton, Wisconsin
 6 April 2009

