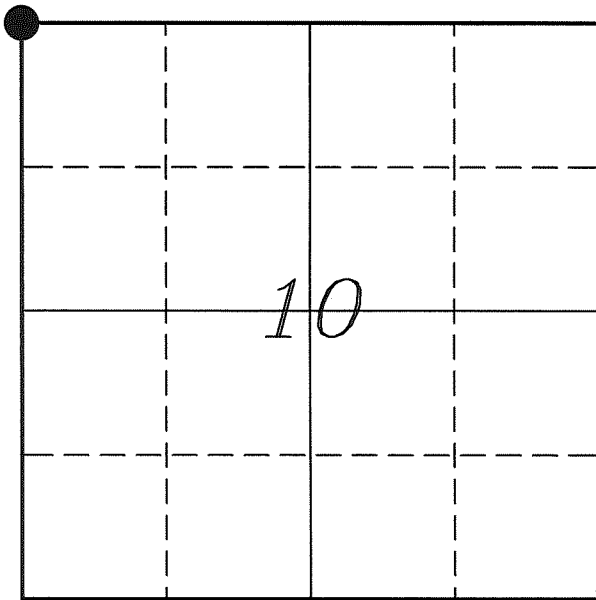

U. S. PUBLIC LAND SURVEY MONUMENT RECORD

SECTION 10, T14N, R5W, TOWN OF COON VERNON COUNTY, WISCONSIN



LOCATION OF LANDMARK

Crew: Laurence E Johns III

Date: 1 April 2009

VERNON COUNTY COORDINATE SYSTEM	
Northing	205304.069
Easting	680681.243
Elevation	
TYPE OF LANDMARK:	
Set Lunde Monument	
BEARINGS ARE REFERENCED TO:	
Vernon County Coordinates	

Describe any record evidence, monument evidence, testimonial evidence or any other material evidence you considered and whether the monument was found or restored through acceptance of an obliterated evidence location.

Could not locate any bearing trees of record.

There is a very strong North/South fence at this location.

Did find a fence heading to the East but was just wrapped around a fence post. Pieces of fence were laying on the ground in a somewhat Easterly direction.

When extending the North line of the NE1/4 of Section 10 it comes to a location approx 13 feet South of where fences came together. This location fits better with the government distance to the SW Corner and also Knower's distance to the E 1/4 of Section 4.

This location also fit very well when extending the line from the NW corner of Section 9 through the '40' fence corner 3/4 mile West of this location.

It appeared to me that the intersection of the North line of the NE1/4 of Section 10 and the North/South fence line fit well with section distances and therefor accepted this location as the best available evidence of the original government corner.

Describe or show any material discrepancy between the location of the restored corner and that of the corner previously restored or re-established.

This corner was established by Alfred Brown in October 1846.

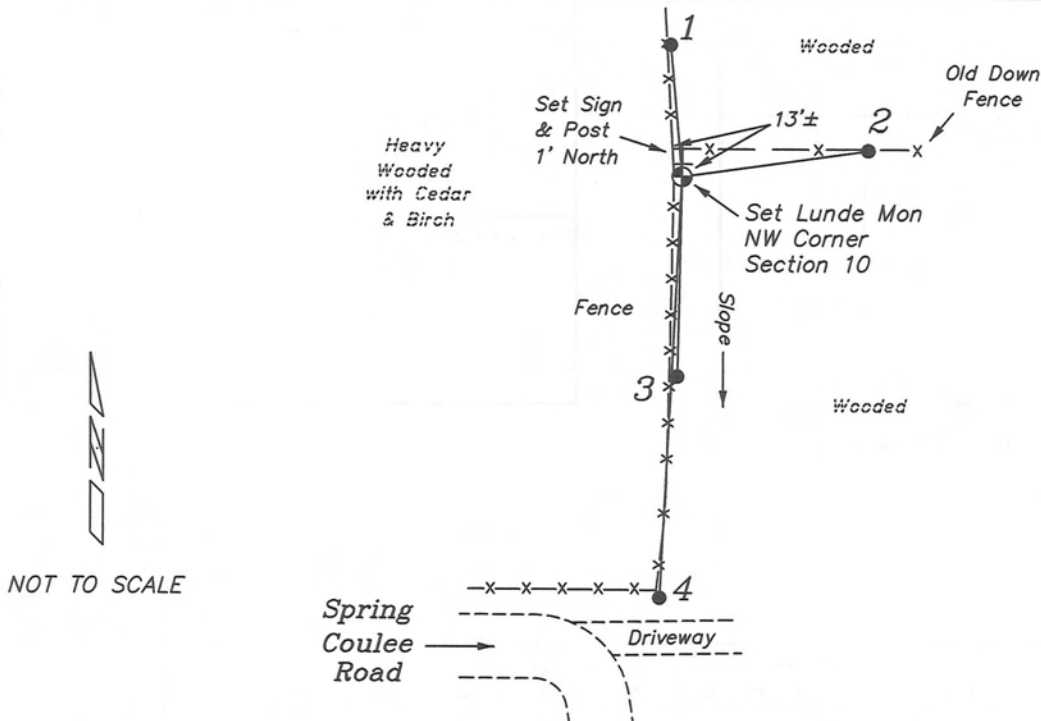
Wm Knower was here, in February 1883, during a survey of Section 4 and re-established the corner by agreement.

Wm Knower was here again, in August 1888, during a survey of Section 10 and found the corner from the previous survey.

Wm Knower was here again, in October 1889, during a survey of Section 3 and notes that he found the Gov't corner.

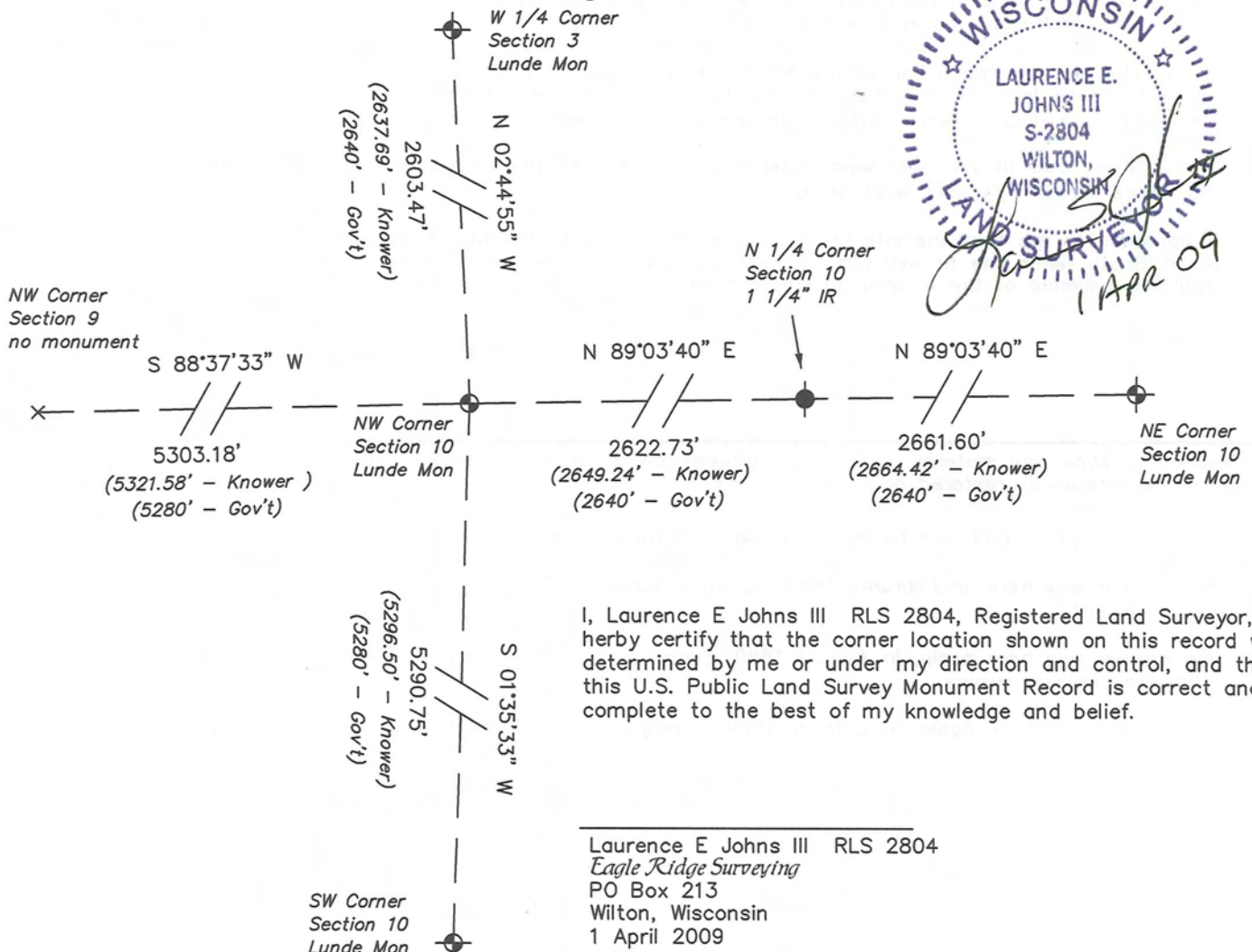
RECORD OF DURABLE WITNESS MONUMENTS

NO	DESCRIPTION	BEARING	DISTANCE
1	Set 3/4" x 18" Iron Rod In Fence Line	N 03°05'18" W	68.11'
2	Set 3/4" x 18" Iron Rod Next to Down Fence Line	N 81°56'22" E	97.85'
3	Set 3/4" x 18" Iron Rod In Fence Line	S 01°17'32" W	148.78'
4	Set 3/4" x 18" Iron Rod In Fence Line	S 02°55'29" W	346.27'



PLAN VIEW DRAWING OF REFERENCE TIES

Map Showing Distance And Direction To Other Public Land Survey
Corners Used For Re-Establishing The Corner



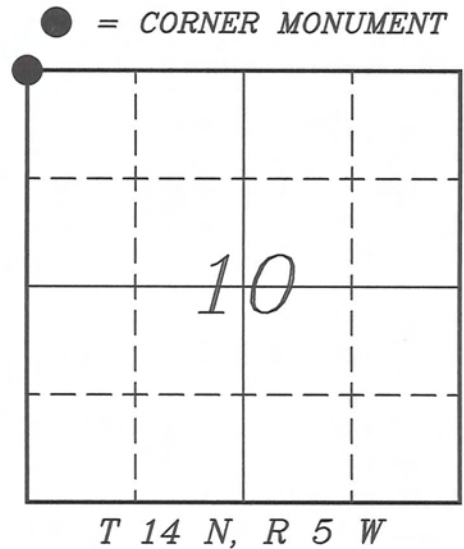
I, Laurence E Johns III RLS 2804, Registered Land Surveyor, hereby certify that the corner location shown on this record was determined by me or under my direction and control, and that this U.S. Public Land Survey Monument Record is correct and complete to the best of my knowledge and belief.

Laurence E Johns III RLS 2804
Eagle Ridge Surveying
PO Box 213
Wilton, Wisconsin
1 April 2009

VERNON COUNTY COORDINATE SUBMISSION FORM
"As An Addendum To"
VERNON COUNTY
CERTIFIED U.S. PUBLIC LAND SURVEY MONUMENT RECORD

INSTRUCTIONS: THIS RECORD FORM SHOULD BE USED WHEN COORDINATES ARE PROVIDED FOR A PUBLIC LAND SURVEY CORNER AND SHALL INCLUDE ALL OF THE FOLLOWING ELEMENTS (A-D)

(A) IDENTIFY THE CORNER BY REFERENCE TO THE U.S. PUBLIC LAND SURVEY SYSTEM IN DIAGRAM AT RIGHT



(B) COORDINATES:

GEOGRAPHIC (Degrees Minutes Seconds)
 LATITUDE: 43° 42' 37.027" N
 LONGITUDE: 90° 58' 11.431" W
 ELLIPSOID HT (m): _____
 DATUM: NAD 1983 (2007)
 GEOID03 ADJ: -32.517
 OTHROMETRIC HT: _____

VERNON COUNTY (U.S. FEET) Coord Quality (+/-)
 NORTHING (Y): 205304.069 _____
 EASTING (X): 680681.243 _____

GPS METHOD USED TO COMPUTE COORDINATES (check as applicable)

RTK Observations Static Baselines OPUS-RS Solution OPUS-S Solution
 Combination of GPS Observations & Conventional Procedures

Was a Least Squares Adjustment Used to Compute Coordinates? Yes / No

BASE CONTROL USED FOR COORDINATE COMPUTATION

Station Name	Station Coordinates	Date/Time
<u>OPUS Control Sta</u>	<u>43° 42' 28.635" N 90° 58' 12.205" W</u> <u>N - 204454.358 E - 680622.602</u>	<u>03/19/2009 - 15:36</u>
<u>Same</u>	_____	<u>04/01/2009 - 13:28</u>

(C) REASON FOR COORDINATES SUBMITTAL (check one)

Being Filed With a New U.S. PLS Monument Record
 To Correct the Coordinates Listed on a Previously Filed PLS Monument Record
 To Provide Coordinates for Previously Filed PLS Monument Record without Coordinates
 To Provide Supplemental Coordinates for a Previously Filed PLS Monument Record

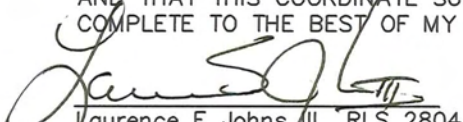
MOST RECENT PLS MONUMENT RECORD DATE:

R.L.S. WHO CREATED MOST RECENT PLS MONUMENT RECORD:

(D) AGENT(S) PERFORMING GPS OBSERVATIONS & COORDINATE COMPUTATION

1) LAURENCE E JOHNS III
 2) _____

I, LAURENCE E JOHNS III RLS 2804, REGISTERED LAND SURVEYOR, HEREBY CERTIFY THAT THE COORDINATES PROVIDED ON THIS RECORD WERE DETERMINED BY ME OR UNDER MY DIRECTION AND CONTROL AND THAT THIS COORDINATE SUBMISSION FORM IS CORRECT AND COMPLETE TO THE BEST OF MY KNOWLEDGE AND BELIEF.


 Laurence E Johns III RLS 2804
 Eagle Ridge Surveying
 PO Box 213
 Wilton, Wisconsin
 1 April 2009

